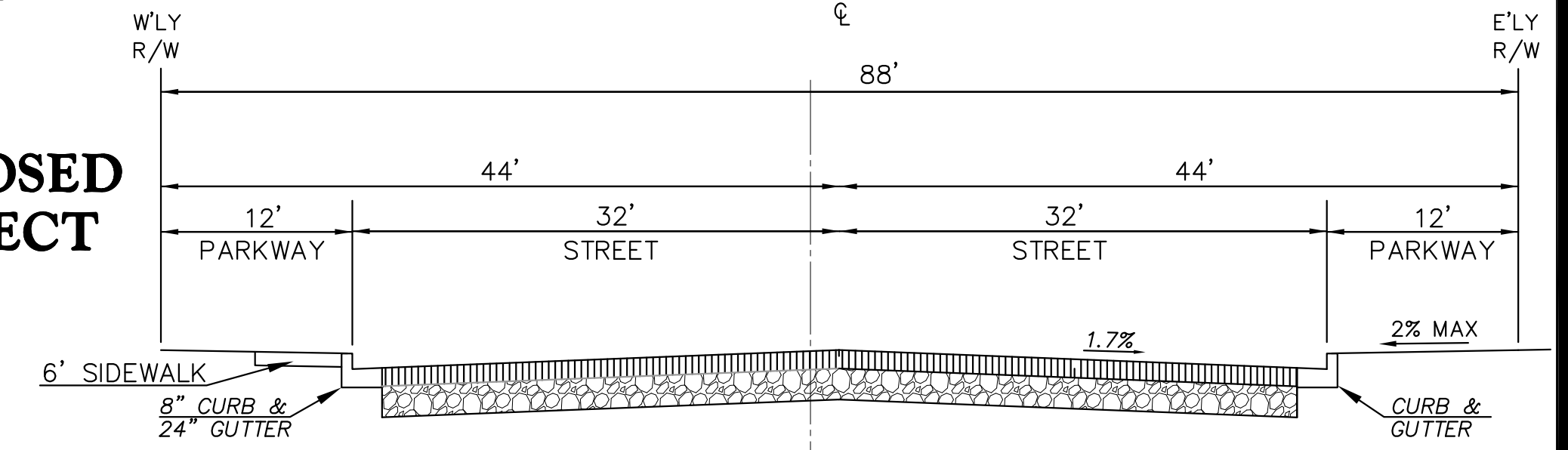


SITE PLAN

COLTON AVE & WABASH AVE, REDLANDS, CA

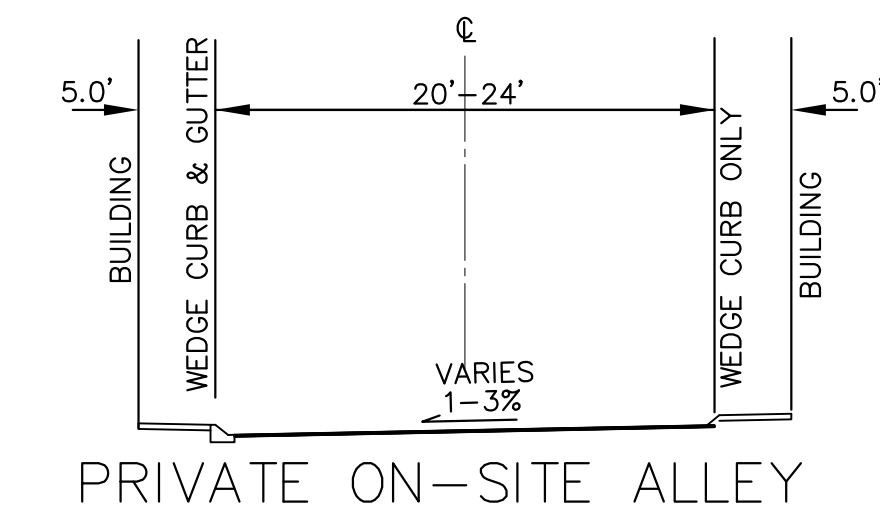
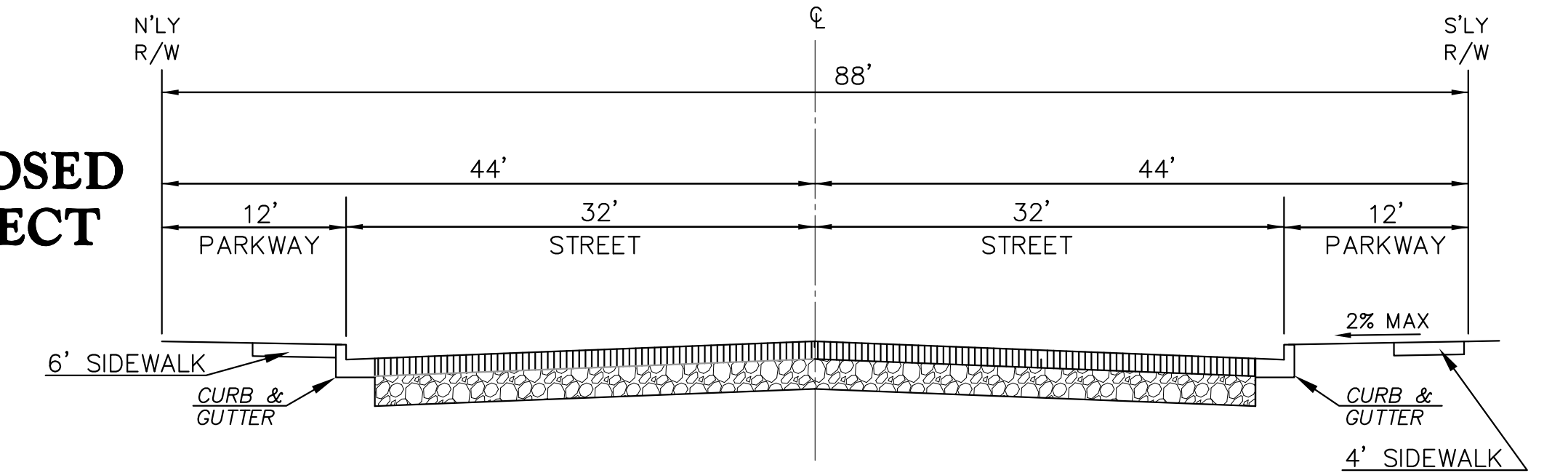
WABASH AVE. TYPICAL SECTION N.T.S.

PROPOSED PROJECT

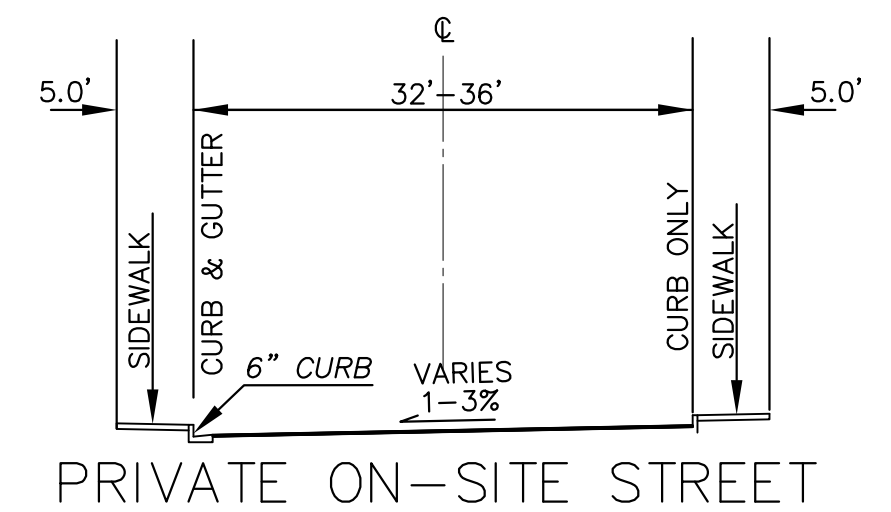


COLTON AVE. TYPICAL SECTION N.T.S.

PROPOSED PROJECT



STREET SECTION NO SCALE



STREET SECTION NO SCALE

LEGEND

- PROP. LOT LINE
- BOUNDARY LINE
- PROP. CURB
- EX. CURB
- PROPOSED SEWER
- EXISTING SEWER
- PROPOSED WATER
- EXISTING WATER
- PROPOSED STORM DRAIN
- EXISTING STORM DRAIN

PROJECT SUMMARY

9.01 ACRES
11.43 DU/ACRE
103 TOTAL UNITS

PRODUCT 1

40 UNITS
1,544 SF

PRODUCT 2

27 UNITS
1,700 SF

PRODUCT 3

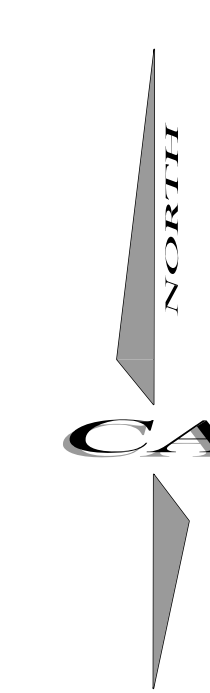
36 UNITS
1,858 SF

PARKING SUMMARY

63 GUEST STALLS
206 GARAGE STALLS
269 TOTAL STALLS

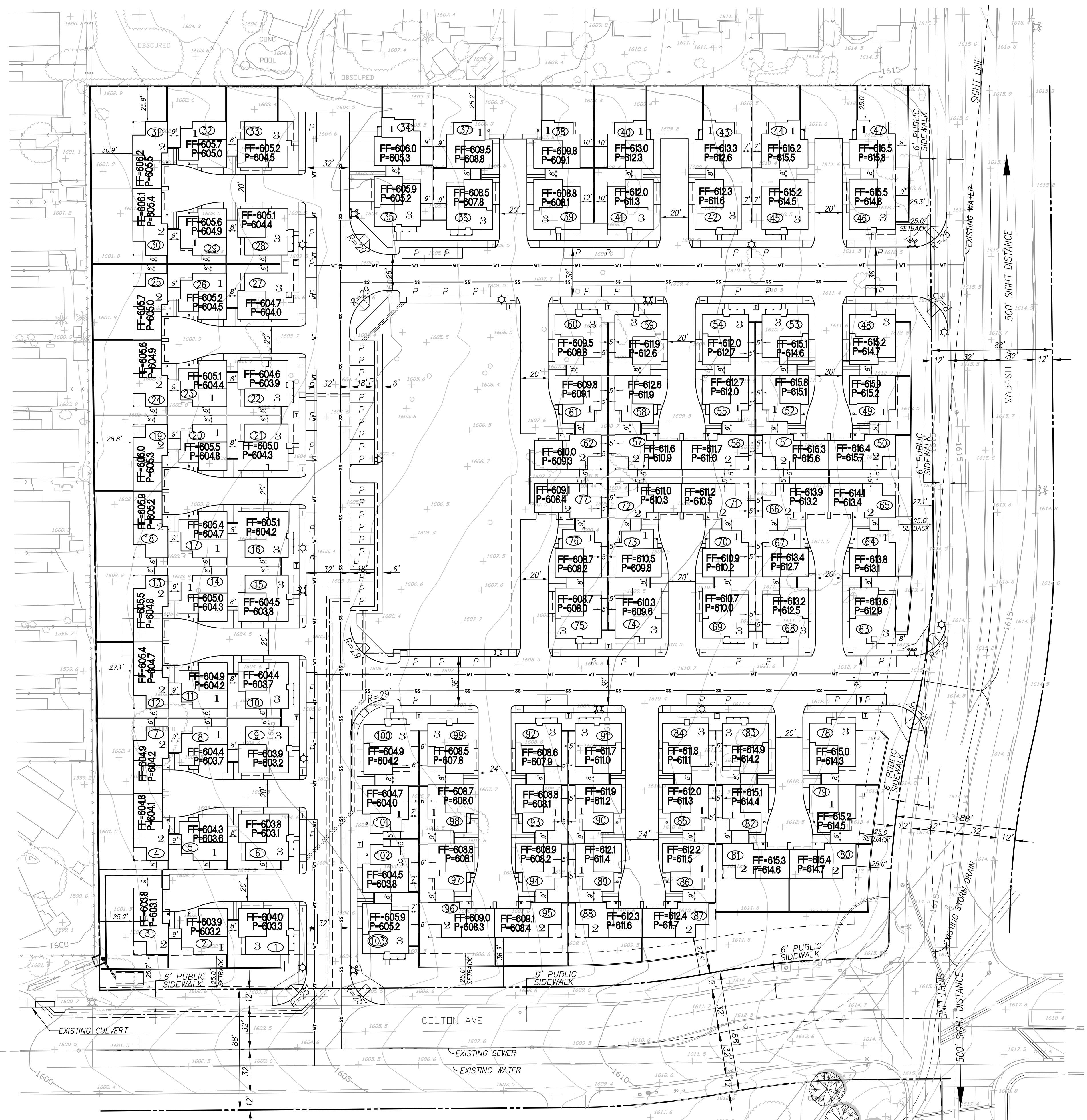
MIX SUMMARY

PRODUCT 1 - 40 UNITS 38.8%
PRODUCT 2 - 27 UNITS 26.2%
PRODUCT 3 - 36 UNITS 35.0%



GRAPHIC SCALE

(IN FEET)
1 inch = 40 ft.



Soni 2012 Irrevocable Trusts
1423 Georgina Avenue Santa Monica
Santa Monica, CA 90402
(949) 922-7075
Contact: Vanita Soni Puri

CA ENGINEERING, INC.
Planning • Engineering • Surveying
13821 NEWPORT AVE, STE 110
TUSTIN, CA 92780
949-724-9480 949-724-9484 FAX

**SHEET
C1.2**

Oct 05 2022

JOB NO.
816-1

SHEET NO. **1**

OF 1 SHTS.

S:\1916-7 Redlands\1916-7_T1916.dwg last Modified: 03 Oct 2022 - 5:05pm
Printed on: 10/05/2022 - 6:10am by: vnp