

Trail Descriptions

For more than a century, people have used the Carriage Trail which was built by Redlands' early philanthropists, Albert and Alfred Smiley, to take guests of their world famous Cañon Crest Park to the picnic area they named Tremont on the south ridge of San Timoteo Canyon. It has existed since the 1890s and was also used by farmers to access the land in the bottom of the canyon.

The Cocomaricopa trail along the north side of San Timoteo Creek originally served as an access road for the San Bernardino County Flood Control District. After a wash-out at a narrow point, the road was abandoned and has since been used by hikers, equestrians, and cyclists. Its name is a nod to the original trail, which regional Native Americans - Serrano, Gabrieleno & Cahuilla - used through San Timoteo Canyon to travel between the desert lands and the ocean.

Note: All distances are approximations based on starting from the Alessandro Parking Lot. These are tri-use trails for hikers, bikers, and equestrians. Observe right-of way protocols as posted on trail signs. Bikers are strongly encouraged to pick-up a bike bell provided near the kiosk. Please return them before leaving the area for others to use.

Continued on back →



Carriage Trail

2.8 miles to Beverley's Pond. The trail winds in and out of side canyons with a gentle rise and fall. Trail is fairly wide with no obstacles. There are four connectors to the Cocomaricopa trail that allow shorter loops of 2.2 miles, 3.4 miles, 3.8 miles and 4.8 miles.

Cocomaricopa Trail

2.3 Miles to Beverley's Pond. Trail is flat and meanders close to the creek/flood plain.

Overlook Trail

1.7 Miles to Overlook. Overlook is a mildly steep, 1/8 mile climb from the Carriage Trail. There is a view bench which overlooks the San Timoteo Canyon including orange groves, mountains, and basin.

Beverley's Pond

2.8 miles via the Carriage Trail, and 2.2 miles via the Cocomaricopa Trail from the Alessandro parking lot. The pond was the result of the 1969 flooding that undermined the bridge and created a swale that dug out the side of the canyon. When the Flood control channel was developed, the pond remained. The benches, picnic table, and signage were provided by an Eagle Scout project. Bill Cunningham, owner of the adjacent property, provides the water to maintain the pond. The pond is named after his late wife. Birds identified in the pond and adjacent wetlands include migrating waterfowl, raptors, and coastal and inland wetland birds. The pond hosts several types of dragonflies, amphibians, and fish.

Please visit cityofredlands.org or redlandsconservancy.org to view or download our complete collection of trail maps and brochures.



Redlands Conservancy

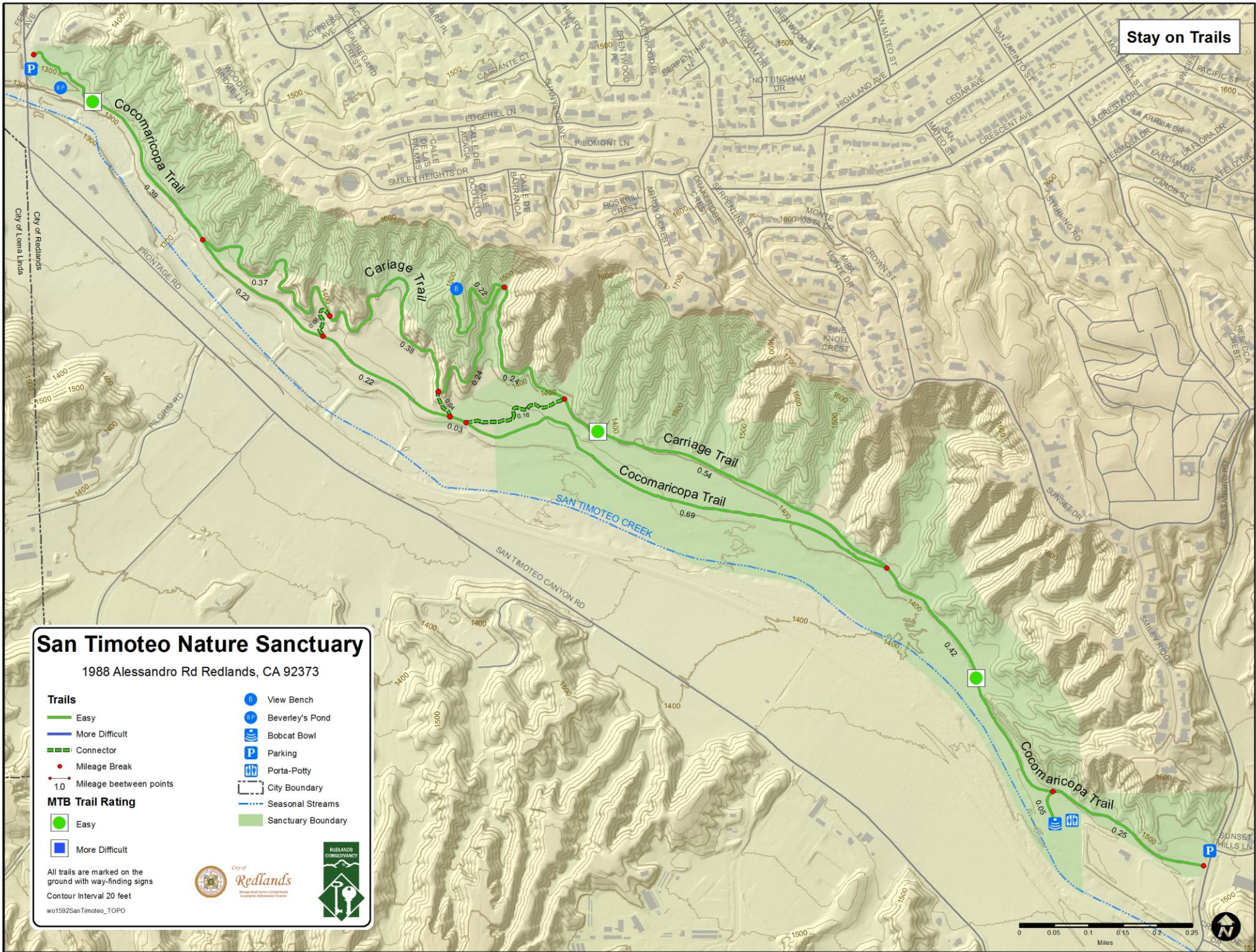
PO Box 855
Redlands, CA 92373
redlandsconservancy.org



San Timoteo Nature Sanctuary

Redlands Conservancy holds a conservation easement on the 160-acre San Timoteo Nature Sanctuary which is owned by the City of Redlands and was purchased through a combination of measure 'O' money, developer contributions, and EPA funds. Located on the north side of San Timoteo Creek between Alessandro Road and San Timoteo Canyon Road, the sanctuary includes at least three distinct habitats - grassland, hillside chaparral, and riparian with the only year-round stream in the area. Redlands Conservancy's responsibilities involve protecting the site's conservation values, including endangered species, wildlife corridor, wildlife habitat, historic and cultural artifacts, and two historic trails - Carriage Trail and Cocomaricopa Trail.

Information & Trail Map



San Timoteo Nature Sanctuary

1988 Alessandro Rd Redlands, CA 92373

Trails

- Easy
- More Difficult
- - - Connector
- Mileage Break
- Mileage between points

MTB Trail Rating

- Easy
- More Difficult

Other Features:

- B View Bench
- P Beverly's Pond
- B Bobcat Bowl
- P Parking
- P Porta-Potty
- City Boundary
- - - Seasonal Streams
- Sanctuary Boundary

All trails are marked on the ground with way-finding signs
 Contour Interval 20 feet
 w01592SanTimoteo_TOP0

