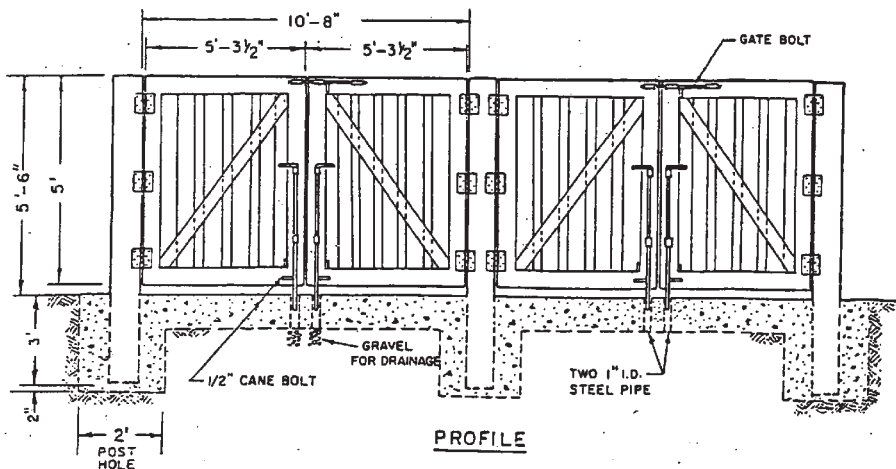
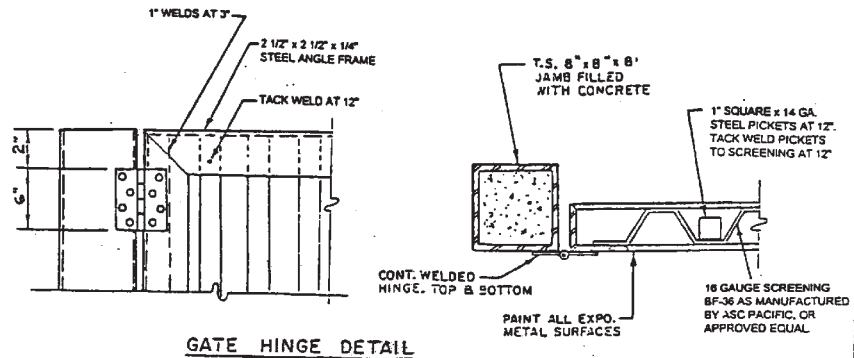


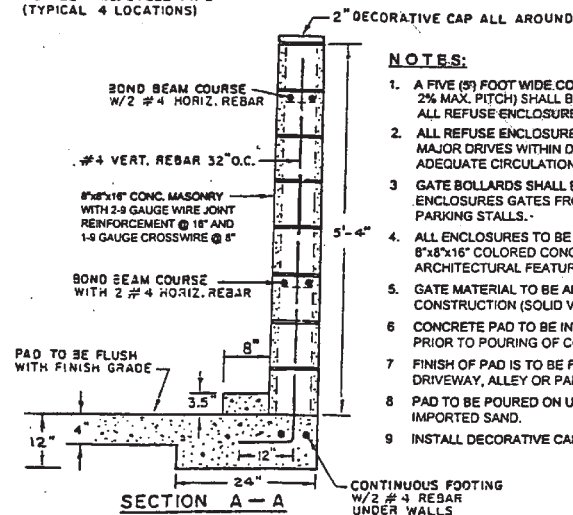
PLAN VIEW



PROFILE



GATE HOLD
INSTALL 1" I.D. STEEL PIPE
(TYPICAL 4 LOCATIONS)



NOTES:

1. A FIVE (5) FOOT WIDE CONCRETE APRON (WITH A 2% MAX. PITCH) SHALL BE PLACED IN FRONT OF ALL REFUSE ENCLOSURES.
2. ALL REFUSE ENCLOSURES SHALL BE LOCATED ON MAJOR DRIVES WITHIN DEVELOPMENTS TO ACHIEVE ADEQUATE CIRCULATION OF REFUSE VEHICLES.
3. GATE BOLLARDS SHALL BE INSTALLED TO PREVENT ENCLOSURES GATES FROM SWINGING INTO ADJACENT PARKING STALLS.
4. ALL ENCLOSURES TO BE CONSTRUCTED WITH 8"x8"x16" COLORED CONCRETE BLOCKS TO MATCH ARCHITECTURAL FEATURES. FILL CELLS WITH MORTAR.
5. GATE MATERIAL TO BE APPROVED PRIOR TO CONSTRUCTION (SOLID VIEW OBSCURING).
6. CONCRETE PAD TO BE INSPECTED BY FIELD SERVICES PRIOR TO POURING OF CONCRETE.
7. FINISH OF PAD IS TO BE FLUSH WITH FINISH ELEVATION DRIVEWAY, ALLEY OR PARKING LOT.
8. PAD TO BE POURED ON UNDISTURBED SOIL OR 6" INCHES IMPORTED SAND.
9. INSTALL DECORATIVE CAP ALL AROUND.

Drawn: SCHUERMANN-	Date: FEB. 1, 1996
Revised: 2-14-01	Series: NONE
Approved by: _____	

CITY OF REDLANDS
MUNICIPAL UTILITIES DEPARTMENT
TRASH / RECYCLING BIN ENCLOSURE

B-40170-1