

CULTURAL RESOURCES ASSESSMENT

10797 NEW JERSEY STREET INDUSTRIAL PROJECT

CITY OF REDLANDS

SAN BERNARDINO COUNTY, CALIFORNIA

LSA

May 2020

CULTURAL RESOURCES ASSESSMENT

**10797 NEW JERSEY STREET INDUSTRIAL PROJECT
CITY OF REDLANDS
SAN BERNARDINO COUNTY, CALIFORNIA**

Prepared for:

Larry Cochrun
LDC Industrial Realty
555 N. El Camino Real, Suite A456
San Clemente, California 92672

Prepared by:

Riordan Goodwin
LSA Associates, Inc.
1500 Iowa Avenue, Suite 200
Riverside, California 92507
(951) 781-9310

LSA Project No. CWW1901

National Archaeological Data Base Information:

Type of Study: Records Search, Survey, Archaeological Assessment
USGS Quadrangle: Redlands, California
Acreage: 4.77



May 2020

MANAGEMENT SUMMARY

LSA was retained by LDC Industrial Realty to conduct a cultural resources assessment for the proposed 10797 New Jersey Street Industrial Project in the City of Redlands, San Bernardino County, California. The City required this study as part of the environmental review process to comply with the California Environmental Quality Act (CEQA).

A cultural resources records search, additional research, and a field survey were conducted for the project area. A historic period residence was formerly located within the project area, and the project parcels were under cultivation for several decades during the historic period. In addition, six resources related to Native American cultural heritage are recorded within a mile. Considering these factors, along with the limited data from the records search (only approximately 20 percent of the area within one mile has been surveyed for cultural resources), the project parcels have some potential for subsurface resources. Therefore, monitoring of earthmoving activities in the upper 10 feet of soil (including initial grubbing and vegetation removal) is recommended to mitigate potential impacts to undocumented archaeological resources.

In the event buried cultural materials are encountered during earthmoving operations associated with the project, all work in that area should be halted or diverted until a qualified archaeologist can evaluate the nature and significance of the finds.

In the event human remains are encountered, State Health and Safety Code Section 7050.5 states that no further disturbance shall occur until the County Coroner has made a determination of origin and disposition pursuant to Public Resources Code Section 5097.98. The County Coroner must be notified of the find immediately. If the remains are determined to be Native American, the County Coroner will notify the Native American Heritage Commission (NAHC), which will determine and notify a Most Likely Descendant (MLD). With the permission of the landowner or his/her authorized representative, the MLD may inspect the site of the discovery. The MLD shall complete the inspection within 48 hours of notification by the NAHC. The MLD will have the opportunity to offer recommendations for the disposition of the remains.

TABLE OF CONTENTS

MANAGEMENT SUMMARY	i
TABLE OF CONTENTS	ii
APPENDIX	ii
FIGURE	iii
TABLE	iii
INTRODUCTION	1
SETTING	3
NATURAL SETTING	3
Climate and Watershed.....	3
Biology.....	3
Geology.....	3
CULTURAL SETTING.....	3
Prehistory	3
Ethnography	4
History	6
METHODS	7
RECORDS SEARCH	7
ADDITIONAL RESEARCH	7
NATIVE AMERICAN SCOPING	7
ARCHAEOLOGICAL FIELD SURVEY	7
RESULTS.....	8
RECORDS SEARCH	8
ADDITIONAL RESEARCH	10
NATIVE AMERICAN SCOPING	10
ARCHAEOLOGICAL FIELD SURVEY	10
DISCUSSION.....	11
RECOMMENDATIONS.....	12
REFERENCES	13

APPENDIX

A: RECORDS SEARCH BIBLIOGRAPHY

B: NATIVE AMERICAN SCOPING

FIGURE

Figure 1: Regional and Project Location..... 2

TABLE

Table A: Resources Within One Mile of the Project Area with DPR Documentation..... 8

INTRODUCTION

LSA was retained by LDC Industrial Realty to conduct a cultural resources assessment for the proposed 10797 New Jersey Street Industrial Project in Redlands, San Bernardino County, California. This assessment was completed pursuant to the California Environmental Quality Act (CEQA), Public Resources Code Chapter 2.6, Section 21083.2, and California Code of Regulations Title 14, Chapter 3, Article 5, Section 15064.5. The research and field survey were conducted to determine whether the proposed project could adversely affect any resources considered historical resources per CEQA.

The project is bounded by commercial development to the north and west, a vacant lot to the east and a citrus grove to the south. The project is depicted on the United States Geological Survey (USGS) *Redlands, California* topographic quadrangle map in an unsectioned area of Township 1 North, Range 4 West, San Bernardino Baseline and Meridian (USGS 1988; Figure 1). The study area addressed in this report is the approximately 4.77-acre lot (Assessor's Parcel Number 0292-154-09) at 10797 New Jersey Street. The proposed project is a 179,000-square foot concrete tilt-up warehouse building and related parking on this parcel and the adjacent parcel (Assessor's Parcel Number 0292-154-210) which will be merged into one.

Figure 1: Regional and Project Location

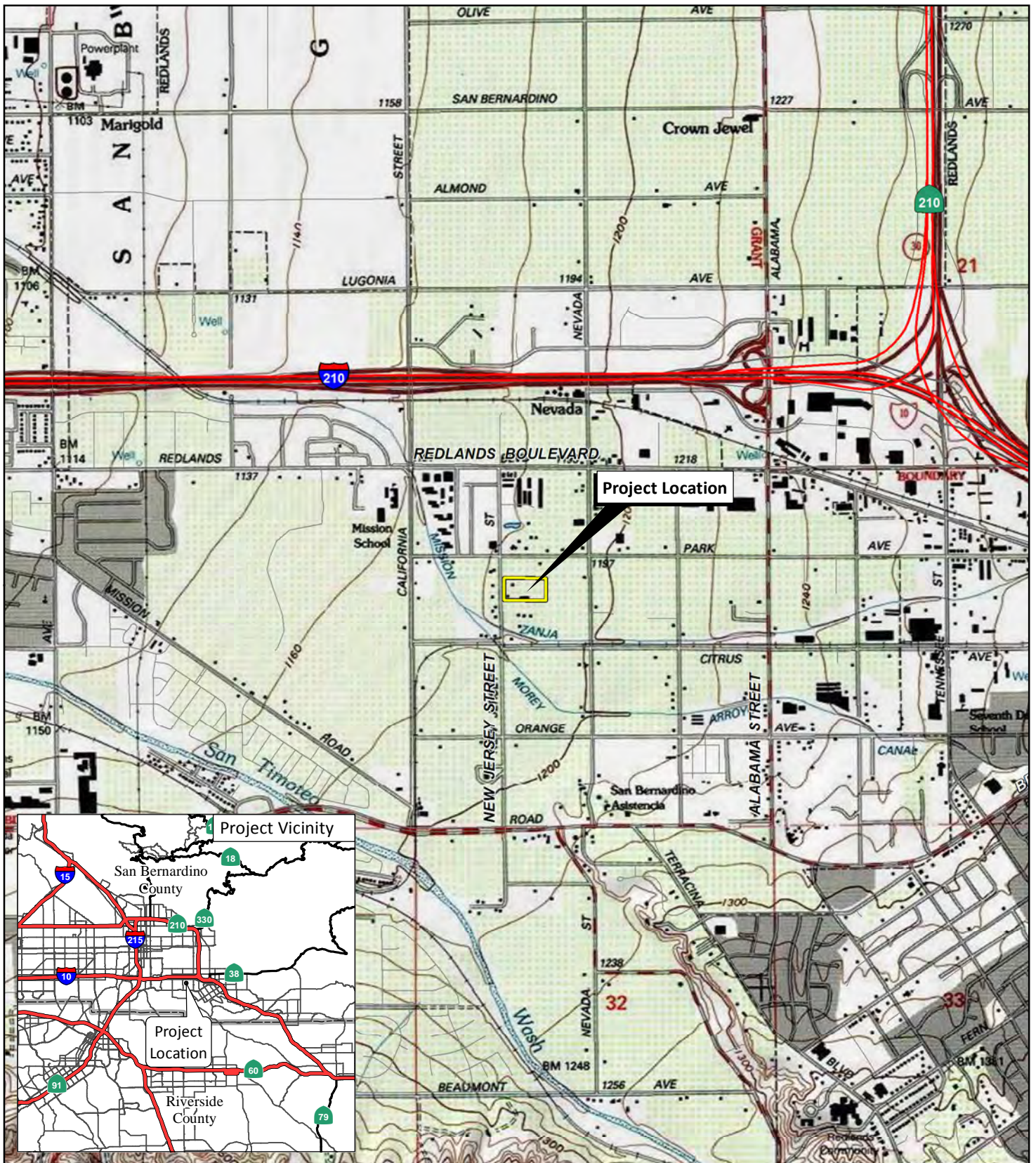
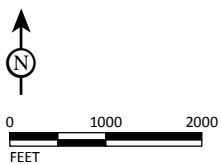


FIGURE 1

LSA



SOURCE: USGS 7.5' Quads: Redlands, 1988, CA; ESRI Streetmap, 2013.

I:\ALN1801\Reports\Cultural\fig1_RegLoc.mxd (9/17/2018)

10797 New Jersey Street Industrial Project
Regional and Project Location

SETTING

NATURAL SETTING

Climate and Watershed

The project region is characterized by a temperate climate, with dry, hot summers and moderate winters. Rainfall ranges from 12 to 16 inches annually (Beck and Haase 1974). Precipitation usually occurs in the form of winter rain, with warm monsoonal showers in summer. The nearest reliable natural source of water is the Santa Ana River, which drains west-southwest approximately 2 miles north of the project.

Biology

At an average elevation of approximately 1,190 feet above mean sea level (amsl), the project is within the Lower Sonoran Life Zone of California (Schoenherr 1992), which ranges from below sea level to 3,500 feet amsl. Species such as hare oat, mustard, Russian thistle, telegraph weed, and xeric grasses along with various landscaping varieties (eucalyptus, palm, pepper, and pine trees) were noted on the property. Extensive fauna are known locally, including many endemic species of reptiles, birds, and insects.

Geology

The project area is located at the northern end of the Peninsular Ranges Geomorphic Province that extends from the Transverse Ranges to the tip of Baja California and includes the Los Angeles Basin (California Geological Survey 2002; Norris and Webb 1976). This region is characterized by a series of mountain ranges separated by northwest-trending valleys subparallel to faults branching from the San Andreas Fault. The geology of this province is similar to that of the Sierra Nevada, with numerous rock outcroppings useful to the Native Americans for resource milling, shelter and ceremonial art.

CULTURAL SETTING

Prehistory

Chronologies of prehistoric cultural change in Southern California have been attempted numerous times, and several are reviewed in Moratto (1984). No single description is universally accepted as the various chronologies are based primarily on material developments identified by researchers familiar with sites in a particular region and variation exists essentially due to the differences in those items found at the sites. Small differences occur over time and space, which combine to form patterns that are variously interpreted.

Currently, two primary regional culture chronology syntheses are commonly referenced in the archaeological literature. The first, Wallace (1955), describes four cultural horizons or time periods: Horizon I – Early Man (9000–6000 BC), Horizon II – Milling Stone Assemblages (6000–3000 BC), Horizon III – Intermediate Cultures (3000 BC–AD 500), and Horizon IV – Late Prehistoric Cultures (AD 500–historic contact). This chronology was refined (Wallace 1978) using absolute chronological dates obtained after 1955.

The second cultural chronology (Warren 1968) is based broadly on Southern California prehistoric cultures and was also revised (Warren 1984; Warren and Crabtree 1986). Warren's (1984) chronology includes five periods in prehistory: Lake Mojave (7000–5000 BC), Pinto (5000–2000 BC), Gypsum (2000 BC–AD 500), Saratoga Springs (AD 500–1200), and Protohistoric (AD 1200–historic contact). Changes in settlement pattern and subsistence focus are viewed as cultural adaptations to a changing environment, which begins with gradual environmental warming in the late Pleistocene, continues with the desiccation of the desert lakes, followed by a brief return to pluvial conditions, and concludes with a general warming and drying trend, with periodic reversals that continue to the present (Warren and Crabtree 1986).

After AD 500, there was an influx of Native American groups from the eastern deserts into southern California. These groups brought changes in subsistence focus and associated technologies, as well as burial practices. These cultural changes along with the group migrations are known as the Shoshonean Intrusion or Shoshonean Wedge (Kroeber 1925; Koerper 1979) and the Takic Wedge (Bergin and Ferraro 1999). The term Takic Wedge refers to the wedge of Takic culture groups that moved to the coast, displacing tribes of the Hokan and Yuman language stocks to the north and south (Shipley 1978). The ethnographically recorded Luiseño, Juaneño, and Gabrielino are thought to be the descendants of prehistoric Takic populations that settled along the coast during the Late Prehistoric Period, or perhaps even earlier. The Serrano and Cahuilla, more distant from the coast, are also Takic-speaking tribes within this wedge.

Ethnography

The project is located near the intersection of the traditional cultural territories of the Cahuilla and the Serrano (Bean 1978; Bean and Smith 1978; Kroeber 1925). Tribal territories were somewhat fluid and changed over time. Like other Native American groups in Southern California, they were semi-nomadic hunter-gatherers who subsisted by exploitation of seasonably available plant and animal resources. The first written accounts of Native American groups in Southern California were by Spanish missionaries in the late 18th century. Later documentation of the Serrano was by Benedict (1924), Bright (1975), Strong (1929), and many others. The Cahuilla were studied by Barrows (1900), Kroeber (1908), Hooper (1920), and others.

Cahuilla

The territory of the Cahuilla ranged from the San Bernardino Mountains south to Borrego Springs and the Chocolate Mountains, from Orocopia Mountain to the east, to the San Jacinto Plain and Palomar Mountain to the west (Bean 1978). Cahuilla territory lies within the geographic center of Southern California and encompassed diverse environments ranging from inland river valleys and foothills to mountains and desert (Bean and Shipek 1978).

Cahuilla villages, generally located near water sources within canyons or near alluvial fans, comprised groups of related individuals, generally from a single lineage, and the territory around the village was owned by the villagers (Bean 1978). Like other Native American groups in Southern California, the Cahuilla were semi-nomadic peoples leaving their villages and utilizing temporary campsites to exploit seasonably available plant and animal resources (James 1960).

Cahuilla subsistence was based primarily on acorns, honey mesquite, screw beans, piñon nuts, and cactus fruit, supplemented by a variety of wild fruits and berries, tubers, roots, and greens (Kroeber 1925; Heizer and Elsasser 1980). Hunting deer, rabbit, antelope, bighorn sheep, reptiles, small rodents, quail, doves, ducks, and reptiles by means of bows, throwing sticks, traps, and communal drives is documented (James 1960).

Serrano

The Serrano lived in the area generally north of Cahuilla territory (western Riverside County), occupying much of present-day San Bernardino County and northeastern Los Angeles County, but there is some overlap in the perceived ancestral areas. The term Serrano is Spanish for “mountaineer” or “highlander” and was given to people who inhabited the areas of the San Bernardino Mountains that had no associated mission.

The Serrano, like the Cahuilla, were hunter-gatherers who relied on the women to do much of the collecting while the men hunted and captured various animals. Although they exploited whatever flora was available in the area they happened to be, generally they collected acorns, piñon nuts, honey, mesquite, yucca, and cactus fruits, in addition to various seeds, bulbs, and roots. Plants were consumed both raw and cooked. Food processing involved the use of manos, metates, mortars, and pestles. Antelope, deer, mountain sheep, rabbits, and rodents were killed and captured, and the most common hunting implements were the bow and arrow, throwing stick, traps, snares, and deadfalls. Meat was prepared in earth ovens, by boiling in watertight baskets, or by parching (Bean and Smith 1978).

Most of the Serrano lived in small villages near reliable sources of water (springs, perennial seeps, streams, and small lakes) (Benedict 1924). They lived in tule-covered, dome-shaped structures and had ceremonial houses and sweat houses for their religious activities. The basic settlement unit was a village with a number of small satellite resource-gathering camps. The project area is in the vicinity of the historically known settlement of *Kaawchama* (or *Wa'aachnga*), which developed around the San Bernardino Asistencia and became known as the Guachama Rancheria (see below; McCawley 1996).

The Serrano had a patrilineal society composed of clans and families linked by both ancestry and ceremony. Three clans divided this group: the Mohineyam, the Yuhevatam, and the Maringayam. The Serrano were also divided by moieties: the Wildcats and the Coyotes.

With the Spanish intrusion came a drastic change in lifestyle for the natives of Southern California. Incorporation of the indigenous populations into the mission system led to the disruption of native cultures and changes in subsistence and land use practices. Mission San Gabriel, established in 1771, probably had a limited effect on the Serrano population until the San Bernardino Asistencia (and the the Mill Creek Zanja that served it) were established in what would become Redlands around 1820 (Harley 1988). Within a short time, the missions controlled many ranchos where Indians lived and worked.

History

In California, the historic era is generally divided into three periods: the Spanish Period (1769–1821), the Mexican Period (1821–1848), and the American Period (1848–present). As the resource identified within the project area dates to the 20th century, this historic context is limited to a summary addressing San Bernardino County and the City of Redlands.

San Bernardino County

Around 1819, an asistencia of the Mission San Gabriel was established in “Old San Bernardino” (what would become part of western Redlands) and the Native Americans who lived there called the area *Kaawchama* (Hispanicized to *Guachama*) (McCawley 1996). The 35,500-acre Rancho San Bernardino (which includes the project area) was granted to Antonio Maria Lugo in 1842 (Richards 1966). San Bernardino County was created in 1853 from portions of Los Angeles and San Diego Counties due to mineral wealth and the City of San Bernardino was incorporated as the County Seat the following year. Agriculture ultimately replaced mining as the county’s economic base, with thousands of acres under cultivation by the beginning of World War I (McGroarty 1914).

Redlands

After the Mormons left the San Bernardino Valley in the late 1850s, prominent individuals such as Ben Barton and Anson Van Leuven established ranches along what would become Barton Road. By the end of the decade, the area around the mouth of the Santa Ana Canyon was acquired by the Crafts family and would later become known as Crafton. The community that subsequently developed in the area between Crafton and the Old San Bernardino Mission district became known as Lugonia (after the Lugo family, original owners of Rancho San Bernardino). By the early 1880s, two Lugonia entrepreneurs, E.G. Judson and F.E. Brown, formed the Redlands Water Company and began buying up land and constructing reservoirs and canals to provide water to their acquisitions. Judson and Brown platted the town of Redlands (named for the color of the soil) in 1887 (Gudde 1998). The town was incorporated the following year, fourth in the County of San Bernardino. Redlands prospered during the regional citrus boom, but from its founding it also developed with the substantial contributions of “gentlemen ranchers,” prosperous industrialists from the East Coast and the Midwest who established winter homes in the community.

METHODS

RECORDS SEARCH

On October 3 and 17, 2018, and February 11, 2020, LSA Archaeological Technician Allegría Garcia and Archaeologist Aaron McCann conducted the cultural resources records searches for the project area at the South Central Coastal Information Center (SCCIC) located at California State University, Fullerton. It included a review of all recorded historic and prehistoric archaeological sites within one mile of the project, as well as a review of known cultural resource survey and excavation reports. In addition, the California State Historic Property Data File (HPD), which includes the National Register of Historic Places (National Register), California Historical Landmarks (CHL), and California Points of Historical Interest (CPHI), was searched.

ADDITIONAL RESEARCH

In September and October 2018, LSA Archaeologist Riordan Goodwin conducted additional research, including online real estate sites and review of historic period aerial photographs and maps.

NATIVE AMERICAN SCOPING

At the direction of the City, LSA requested a Sacred Lands File (SLF) search for this project from the Native American Heritage Commission (NAHC) on April 4, 2019.

ARCHAEOLOGICAL FIELD SURVEY

After reviewing the records search results of a recent nearby project (to determine if resources had previously been recorded within the project area), LSA Archaeologist Riordan Goodwin completed an intensive pedestrian survey of the project parcel on September 21, 2018. The property was surveyed in systematic parallel transects where possible, spaced by approximately 10 meters (approximately 35 feet). Special attention was paid to areas of exposed soil for surface artifacts and features and rodent burrows for evidence of cultural resource residues. The purpose of this survey was to identify and document, prior to the beginning of ground-disturbing activities, any cultural resources and thus also to identify any area(s) that might be sensitive for buried cultural resources.

RESULTS

RECORDS SEARCH

Data from the SCCIC indicate there have been 93 cultural resource studies previously conducted within one mile of the proposed project, none of which included any portion of the project area. Although no resources have been documented within the project area, 58 have been recorded within one mile, including Native American-related sites, historic period foundations and refuse scatters, water conveyance features, landscapes, orchards, and a variety of built environment properties (Table A). Several have been evaluated as eligible for the National Register of Historic Places (National Register) and California Register of Historical Resources (California Register) and are also State Historic Landmarks (CHL) or Points of Historic Interest (CPHI).

Table A: Resources Within One Mile of the Project Area with DPR Documentation

Primary #	OHP #	Site Description*	Status Code
36-002307	062131	26930 Barton Road, San Bernardino Asistencia, c. 1819 CHL #42	3S/7L
36-002311	—	Guachama Rancheria	—
36-002663	—	Historic period water conveyance features, refuse deposits	—
36-006173	—	Bryn Mawr Town site (Loma Linda) c.1908	—
36-007083	—	Historic period refuse deposit	—
36-007829	—	10885 New Jersey Avenue, Tolf House c. 1947 residence	6Z
36-008092	—	Mill Creek Zanja (c. 1819 water conveyance feature) CHL #43	3CS
36-010330		Historic period railroad route (Southern Pacific)	
36-010877	—	Historic period foundation, features	—
36-011263	—	Historic period foundations, debris	—
36-011854	—	Historic period Native American hearth feature, ceramics, ecofacts	—
36-012365	—	11126 Iowa Street; Van Uffelen Dairy residences c. 1910s–1950s	—
36-012853	—	Water conveyance system, trace historic refuse (not insitu)	—
36-012854	—	10875 Iowa Street; c. 1910 residence	—
36-13887	—	26251 Redlands Boulevard (Loma Linda) Cole Ranch House c. 1882–1886	3B
36-13888	—	26300 Mission Road, Nat Hinckley House c. 1938 residence	3D
36-13891	—	26100 Mission Road (Loma Linda) Opal Van Leuven House c. 1912–1913 residence	3D
36-13892	—	26013 Redlands Boulevard (Loma Linda) Opal Van Leuven House c.1895 residence	3D
36-013893	—	10568 California Street; Mission School c. 1937	3B
36-015135	—	2024 Orange Tree Lane; San Bernardino County Museum c. 1957 CPHI #1	7L
36-016417	—	Mission Road (San Bernardino/Sonora Road); CPHI #21	—
36-016640	062123	26849 Barton Road; White House, historic residence (no details)	2S
36-016641	069518	27297 Barton Road; Marshall House, historic residence (no details)	2S

Table A: Resources Within One Mile of the Project Area with DPR Documentation

Primary #	OHP #	Site Description*	Status Code
36-017049 (/-017048, -017050, -017051)	107954, 107955, 107956, 100985	11245 Nevada Street; Barton Villa, c. 1866–1950 building complex, includes site numbers without DPRs for individual buildings	1D/1S/3S/6S
36-019917	—	26657 Orange Avenue, Loma Linda; c. 1952 residence	—
36-019918	—	Historic period landscape (palm trees) Loma Linda; pre-1927	—
36-019921	—	10684 California Street, Loma Linda; c. 1920 residence	3D
36-019922	—	10852 California Street, Loma Linda; c. 1950s residence	3D
36-019923	—	26391 Redlands Boulevard, Loma Linda; c. 1943 residence	6Z
36-019924	—	26393 Redlands Boulevard, Loma Linda; c. 1950s restaurant	6Z
36-019925	—	26397 Redlands Boulevard, Loma Linda; c. 1947 office	6Z
36-019926	—	26472 Mission Road/California Street, Loma Linda; c. 1962 residence	6Z
36-019927	—	26154 Mission Road, Loma Linda; Helen Hinckley House c. 1890 residence	3D
36-019928	—	26210 Mission Road, Loma Linda; c. 1962 residence	6Z
36-019929	—	26220 Mission Road, Loma Linda; c. 1939 residence	3D
36-019930	—	26234 Mission Road, Loma Linda; c. 1946 residence	6Z
36-019931	—	26122 Mission Road, Loma Linda; c. 1945 residence	6Z
36-019932	—	Barn/shed behind 26210 Mission Road, Loma Linda; c. 1935	6Z
36-020133	—	11018 Iowa Street; c. 1940 residence	6Z
36-020135	—	26565 Orange Avenue, Loma Linda; pre-1895 residence	5S2
36-023406	—	Historic period foundation remnants and refuse scatter	—
36-023575	—	Water conveyance system	—
36-024295	—	Former site of historic period residence	—
36-024296	—	Former site of historic period water conveyance system	—
36-025788	—	11126 Iowa Street; Van Grouw Dairy/Barton School c. 1941–1947	—
36-026223	—	Dental 12 kV (electrical) Distribution Line	—
36-027670	—	California Street alignment c. 1887 (now modern paved road)	—
36-027671	—	Citrus Avenue alignment c.1887 (now modern paved road)	—
36-027672	—	Redlands Central railway (Dinky) alignment; c. 1888	—
36-027673	—	Eli C. Curtis Ranch; c. 1899	—
36-029387	—	Historic period landscape (citrus orchards); c. 1880s	—
36-029388	—	County Flood Control Channel; c. 1923	—
36-029389	—	Orange Avenue alignment c. 1887 (now modern paved road)	—
36-029390	—	New Jersey Street alignment c. 1887 (now modern paved road)	—
36-029539	—	Isolated Native American artifact (mano)	—
36-032480	—	Bermudez Street segment (alignment pre-1933, now modern paved road)	—

Table A: Resources Within One Mile of the Project Area with DPR Documentation

Primary #	OHP #	Site Description*	Status Code
36-032482	—	Redlands Boulevard segment (alignment pre-1901, now modern paved road)	—
36-060202	—	Two Native American artifacts (manos)	—

*All resources within the City except where otherwise indicated

ADDITIONAL RESEARCH

Review of historic period aerial photographs, maps, and real estate web sites indicates that the residence on the property was constructed in 1932, the project the parcel was under cultivation with an orchard from the late 1930s until the early to mid-1960s, and developed as a bird farm from the 1970s into the early 2000s (Historic Aerials.com 1938, 1966, 1994, 2002; Redfin 2018).

NATIVE AMERICAN SCOPING

On April 16, 2019, the NAHC responded indicating positive results for the SLF search and a list of Tribes and individuals designated for consultation. At the direction of the City, LSA contacted all individuals on the list on November 6, 2019, and followed up on February 6, 2020. Responses were received from five Tribes. The Soboba Band of Luiseño Indians (Joseph Ontiveros) responded on November 6 indicating they are currently preparing a response and requested that, in the future, Cultural Resource Specialist Jessica Valdez be copied on all correspondence. Jessica Mauck of the San Manuel Band of Mission Indians (SMBMI) responded on November 7, 2019 and indicated that, while the project is located within an SLF that the NAHC has on file for this community, the SMBMI is unlikely to have concerns with the project due to the existing development on site and that she will respond to the Lead Agency, on behalf of SMBMI, upon receipt of the formal CEQA notice from the Lead Agency. Donna Yocum of the San Fernando Band of Mission Indians responded the same day, deferring to SMBMI. Agua Caliente Band of Cahuilla Indians (Lacy Padilla) responded on December 9, 2019, indicating the project is within the Tribe’s Traditional use area and requested the following: a cultural resources inventory of the project area by a qualified archaeologist prior to any development activities, a copy of the records search with associated survey reports and site records from the information center, and copies of any cultural resources documentation (report and site records) generated by the project. Morongo Band of Mission Indians (Travis Armstrong) responded on February 26, 2020 indicating that the Tribe has no comments to provide at this time, but may provide other information to the lead agency during the AB 52 consultation process.

No response was received from any of the other individuals contacted. Please see Appendix B for a detailed record of the scoping, representative examples of contact emails, letters, and related correspondence.

ARCHAEOLOGICAL FIELD SURVEY

Mr. Goodwin conducted the pedestrian survey of the entire project area. Visibility was poor at approximately 15 percent with the surface almost completely obscured by development and vegetation. The project parcel has been subjected to surface disturbance from a residence, agricultural activities, and development of a retail pet store/bird farm, related supply warehouses and

animal enclosures. Sparse modern refuse was noted on the surface throughout the project parcel. Soils are silty alluvium. With the exception of the 1932 residence, no cultural resources were identified within the project area.

DISCUSSION

The project area is located in the vicinity of a historic period Native American settlement (*Kaawchama/Guachama Rancheria*, 36-002311), the San Bernardino Asistencia (36-002307), the Mill Creek Zanja (36-008092), and several other resources (36-011854, 36-029539, and 36-060202) associated with Native American activity in the area. In addition, the residence and agricultural activities on the property date back to the early Depression Era. Therefore, there is some sensitivity for undocumented subsurface resources related to Native American cultural heritage and local history within the project parcels.

RECOMMENDATIONS

A cultural resources records search, additional research, and a field survey were conducted for the project area. A historic period residence was formerly located within the project area, and the project parcels were under cultivation for several decades during the historic period. In addition, six resources related to Native American cultural heritage are recorded within a mile. Considering these factors, along with the limited data from the records search (only approximately 20 percent of the area within one mile has been surveyed for cultural resources), the project parcels have some potential for subsurface resources. Therefore, monitoring of earthmoving activities in the upper 10 feet of soil (including initial grubbing and vegetation removal) is recommended to mitigate potential impacts to undocumented archaeological resources.

In the event that archaeological materials are encountered during construction, all construction work should be halted and a qualified archaeologist consulted to determine the appropriate treatment of the discovery (California Code of Regulations, Title 14, Chapter 3, Section 15064.5(f)).

In the event human remains are encountered, State Health and Safety Code Section 7050.5 states that no further disturbance shall occur until the County Coroner has made a determination of origin and disposition pursuant to Public Resources Code Section 5097.98. The County Coroner must be notified of the find immediately. If the remains are determined to be Native American, the County Coroner will notify the NAHC, which will determine and notify an MLD. With the permission of the landowner or his/her authorized representative, the MLD may inspect the site of the discovery. The MLD shall complete the inspection within 48 hours of notification by the NAHC. The MLD will have the opportunity to offer recommendations for the disposition of the remains.

REFERENCES

Barrows, David Prescott

- 1900 *The Ethno-botany of the Coahilla [sic] Indians of Southern California*. Chicago: University of Chicago Press.

Bean, Lowell John

- 1978 Cahuilla. In *California*, edited by R. F. Heizer, pp. 575–587. *Handbook of North American Indians*, vol. 8, W.C. Sturtevant, general editor, Smithsonian Institution, Washington, D.C.

Bean, Lowell John, and Charles R. Smith

- 1978 Serrano. In *California*, edited by R.F. Heizer, pp. 570–574. *Handbook of North American Indians*, vol. 8, W.C. Sturtevant, general editor, Smithsonian Institution, Washington, D.C.

Bean, Lowell John, and Florence C. Shippek

- 1978 Luiseño. In *California*, edited by R.F. Heizer, pp. 550–563. *Handbook of North American Indians*, vol. 8, W.C. Sturtevant, general editor, Smithsonian Institution, Washington, D.C.

Beck, Warren A., and Ynez D. Haase

- 1974 *Historical Atlas of California*. Norman, Oklahoma: University of Oklahoma Press.

Benedict, Ruth F.

- 1924 A Brief Sketch of Serrano Culture. *American Anthropologist* 26 (3).

Bergin, Kathleen Ann, and David D. Ferraro

- 1999 Historic Properties Treatment Plan: Geotechnical Investigations of the CP Alignment of the Foothill Transportation Corridor—South, Orange and San Diego Counties, California. LSA Associates, Inc. Ms. on file, LSA Associates, Inc., 20 Executive Park, Suite 200, Irvine, California, 92614; Southwest Division, Naval Facilities Engineering Command, 1220 Pacific Highway, San Diego, California; and AC/S Environmental Security Office, MCB Camp Pendleton, California.

Bright, William

- 1975 Two Notes on Tatic Classification: Paper read at the Third Annual Uto-Aztecan Conference, Flagstaff, June 19–20, 1975. (Copy, Manuscript No. 76–66 in National Anthropological Archives, Smithsonian Institution, Washington.)

California Geological Survey

- 2002 *California Geomorphic Provinces*. California Geologic Survey Note 36. California Department of Conservation.

Gudde, Erwin G.

- 1998 *California Place Names: The Origin and Etymology of Current Geographical Names*. Fourth edition, revised and enlarged by William Bright. Berkeley and Los Angeles: University of California Press.

Harley, R. Bruce

- 1988 Rev. Juan Caballeria: Historian or Storyteller? Rethinking the 1810 Dumetz Expedition. *San Bernardino County Museum Quarterly* 35(2), 42p.

Heizer, Robert F., and Albert B. Elsasser

- 1980 *The Natural World of the California Indians*. University of California Press, Berkeley and Los Angeles.

HistoricAerials.com

- 1938 Aerial photograph of project area.
1968 Aerial photograph of project area.
1980 Aerial photograph of project area.
1994 Aerial photograph of project area.
2002 Aerial photograph of project area.

Hooper, Lucile

- 1920 The Cahuilla Indians. University of California Publication in *American Archaeology and Ethnology*. Vol. 16, No. 6. Reprinted by Malki Museum Press. Banning, California.

James, Harry C.

- 1960 *The Cahuilla Indians*. Los Angeles: Westernlore Press. Reprinted in 1969 and 1985 by Malki Museum Press. Banning, California.

Koerper, Henry C.

- 1979 On the Question of the Chronological Placement of Shoshonean Presence in Orange County, California. *Pacific Coast Archaeological Society Quarterly* 15(3):69-84.

Kroeber, Alfred L.

- 1908 *Ethnography of the Cahuilla Indians*. University of California Publications in American Archaeology and Ethnology. Vol. 8. No. 2. Reprinted by Malki Museum Press, Banning, California.
1925 *Handbook of the Indians of California*. Bureau of American Ethnology Bulletin No. 78 Washington D.C.: Smithsonian Institute. Reprinted in 1976, New York: Dover Publications.

McCawley, William

- 1996 *The First Angelinos: The Gabrielino Indians of Los Angeles*. Banning and Novato: Malki Museum Press and Ballena Press.

McGroarty, John Steve

- 1914 Southern California. Southern California Panama Exposition Commission.

Moratto, Michael J.

- 1984 *California Archaeology*. San Diego: Academic Press.

Norris, R.M., and R.W. Webb

- 1976 *Geology of California*. New York: John Wiley and Sons, Inc. 379 pp.

Redfin

- 2018 Property information for 10797 New Jersey Street, Redlands, California. Accessed September 21, 2018.

Richards, Elizabeth W.

- 1966 Guideposts to History: Concerning Origins of Place and Street Names in San Bernardino County. Santa Fe Federal Savings.

Schoenherr, Allan A.

- 1992 *A Natural History of California*. University of California Press, Berkeley and Los Angeles.

Shipley, William F.

- 1978 Native Languages of California. In R. Heizer ed., *Handbook of North American Indians*, vol. 8, California, pp. 80–90. Smithsonian Institution, Washington D.C.

Strong, William D.

- 1929 Aboriginal Society in Southern California. *University of California Publications in American Archaeology and Ethnology* 26(1): 1–358. Berkeley.

United States Geological Survey Topographic Maps

- 1988 *Redlands, California* 7.5 minute topographic quadrangle.

Wallace, William J.

- 1955 A Suggested Chronology for Southern California Coastal Archaeology. *Southwestern Journal of Anthropology* 11(3):214-230.
- 1978 Post-Pleistocene Archaeology. In California, edited by R. Heizer, pp. 550–563. *Handbook of North American Indians*, Vol. 8. W.C. Sturtevant, general editor. Smithsonian Institution, Washington, D.C.

Warren, Claude N.

- 1968 Cultural Tradition and Ecological Adaptation on the Southern California Coast. Eastern New Mexico University Contributions in Anthropology 1(3). Portales.
- 1984 The Desert Region. In *California Archaeology*, by M. Moratto with contributions by D.A. Fredrickson, C. Raven, and C. N. Warren, pp. 339–430. Academic Press, Orlando, Florida.

Warren, Claude N., and Robert H. Crabtree

- 1986 Prehistory of the Southwestern Area. In W.L. D’Azevedo ed., *Handbook of the North American Indians*, Vol. 11, *Great Basin*, pp. 183–193. Washington D.C.: Smithsonian Institution.

APPENDIX A

RECORDS SEARCH BIBLIOGRAPHY

Report List

ALW1801

Report No.	Other IDs	Year	Author(s)	Title	Affiliation	Resources
SB-00006	NADB-R - 1060006; Voided - 37-0.1	1937	RUMBLE, JOSEPHINE R.	HISTORY: THE MILL CREEK ZANJA	COUNTY OF SAN BERNARDINO	
SB-00042	NADB-R - 1060042; Voided - 60-0.1A	1960	HAENSZEL, ARDA M.	SAN BERNARDINO ASISTENCIA -- THE MISSION PERIOD; THE RANCHO PERIOD; THE MORMON PERIOD; POST-MORMON PERIOD	SAN BERNARDINO COUNTY MUSEUM ASSOCIATION QUARTERLY 7 (3):1-5	36-002307
SB-00043	NADB-R - 1060043; Voided - 60-0.1B	1960	BELDEN, L. BURR	SAN BERNARDINO ASISTENCIA -- THE RANCHO PERIOD	SAN BERNARDINO COUNTY MUSEUM ASSOCIATION QUARTERLY 7 (3):6-10	36-002307
SB-00044	NADB-R - 1060044; Voided - 60-0.1C	1960	KNIGHT, EMILY M.	SAN BERNARDINO ASISTENCIA -- THE MORMON PERIOD	SAN BERNARDINO COUNTY MUSEUM ASSOCIATION QUARTERLY 7 (3):11-17	36-002307
SB-00045	NADB-R - 1060045; Voided - 60-0.1D	1960	HAENSZEL, ARDA M.	SAN BERNARDINO ASISTENCIA -- POST-MORMON PERIOD	SAN BERNARDINO COUNTY MUSEUM ASSOCIATION QUARTERLY 7 (3):18-26	36-002307
SB-00065	NADB-R - 1060065; Voided - 65-0.2	1965	HINCKLEY, HORACE P.	RESTORATION OF THE SAN BERNARDINO ASISTENCIA	SAN BERNARDINO COUNTY MUSEUM ASSOCIATION QUARTERLY 13 (1):1-6	36-002307
SB-00192	NADB-R - 1060192; Voided - 73-12.2B	1974	SMITH, GERALD A.	ARCHAEOLOGICAL, HISTORICAL AND PALEONTOLOGICAL SITE SURVEY FOR COUNTY SERVICE AREA NO. 70, IMPROVEMENT ZONE "J", ASSESSMENTS OF IMPACT AND RECOMMENDATIONS, RESERVOIR SITE NO. 4	SAN BERNARDINO COUNTY MUSEUM	36-002208
SB-00200	NADB-R - 1060200; Voided - 74-0.2A	1974	ARCHER, MORSE G.	THE SAN BERNARDINO ASISTENCIA		36-002307
SB-00447	NADB-R - 1060447; Voided - 76-11.16	1976	SCOTT, M. B.	DEVELOPMENT OF WATER FACILITIES IN THE SANTA ANA RIVER BASIN, CALIFORNIA, 1810-1968		36-006109, 36-006545, 36-007172, 36-013549
SB-00574	NADB-R - 1060574; Voided - 77-12.3	1977	HAMMOND, STEPHEN R. and LOIS M. WEBB	CULTURAL RESOURCES SURVEY: ROUTE 30 BETWEEN INTERSTATE ROUTE 10 AND ARDEN AVENUE, SAN BERNARDINO COUNTY, CALIFORNIA		

Report List

ALW1801

Report No.	Other IDs	Year	Author(s)	Title	Affiliation	Resources
SB-00600	NADB-R - 1060600; Voided - 78-1.7	1978	HEARN, JOSEPH E.	ARCHAEOLOGICAL - HISTORICAL RESOURCES ASSESSMENT OF APPROXIMATELY EIGHT ACRES AT THE NORTHEAST CORNER OF REDLANDS BOULEVARD AND BRYN MAWR AVENUE; LOMA LINDA AREA	SAN BERNARDINO COUNTY MUSEUM ASSOCIATION	
SB-00647	NADB-R - 1060647; Voided - 78-5.7	1978	HEARN, JOSEPH E.	ARCHAEOLOGICAL - HISTORICAL RESOURCES ASSESSMENT OF 63 ACRE PARCEL OF LAND LOCATED ON THE NORTH SIDE OF REDLANDS BOULEVARD BETWEEN MOUNTAIN VIEW AVENUE AND BRYN MAWR AVENUE, LOMA LINDA-REDLANDS AREA	SAN BERNARDINO COUNTY MUSEUM ASSOCIATION	
SB-00811	NADB-R - 1060811; Voided - 79-7.5	1979	SIMPSON, RUTH D.	CULTURAL RESOURCES ASSESSMENT: REDLANDS AREA	SAN BERNARDINO COUNTY MUSEUM ASSOCIATION	
SB-00920	NADB-R - 1060920; Voided - 80-2.3	1980	SUTTON, MARK Q.	CULTURAL RESOURCE ASSESSMENT, OIL AND GAS LEASE #CA-284		
SB-00931	NADB-R - 1060931; Voided - 80-2.11	1980	SMITH, GERALD A.	CULTURAL RESOURCES ASSESSMENT OF THE WEST PORTION OF ASSESSOR'S PARCEL NUMBER 292-061-11, REDLANDS AREA	SAN BERNARDINO COUNTY MUSEUM ASSOCIATION	
SB-01074	NADB-R - 1061074; Voided - 81-0.11	1981	LERCH, MICHAEL K. and ARDA M.	LIFE ON COTTONWOOD ROW	HERITAGE TALES - 1981, CITY OF SAN BERNARDINO HISTORICAL SOCIETY, SAN BERNARDINO	
SB-01425	NADB-R - 1061425; Voided - 84-0.5	1984	ALTSCHUL, JEFFREY H., MARTIN R. ROSE, and MICHAEL K. LERCH	MAN AND SETTLEMENT IN THE UPPER SANTA ANA RIVER DRAINAGE: A CULTURAL RESOURCES OVERVIEW	STATISTICAL RESEARCH	36-003871
SB-01567	NADB-R - 1061567; Voided - 86-5.4	1986	SEFF, PHILIP	HISTORIC-ARCHEOLOGICAL INVESTIGATION OF JOSEPH KHOURY'S SUBDIVISION TRACT NO. 2216		
SB-01593	NADB-R - 1061593; Voided - 86-10.1	1986	SEFF, PHILIP	HISTORIC-ARCHEOLOGICAL INVESTIGATION OF JOSEPH KHOURY'S SUBDIVISION TRACT NO. 2216		
SB-01596	NADB-R - 1061596; Voided - 86-10.4	1986	LERCH, MICHAEL K.	CULTURAL RESOURCES ASSESSMENT OF THE CHARTER MEDICAL PROPOSED HOSPITAL SITE, REDLANDS AREA, SAN BERNARDINO COUNTY, CALIFORNIA	LERCH AND ASSOCIATES	

Report List

ALW1801

Report No.	Other IDs	Year	Author(s)	Title	Affiliation	Resources
SB-01783	NADB-R - 1061783; Voided - 88-3.5	1988	HORNBECK, DAVID and HOWARD BOTTS	SEVEN OAKS DAM PROJECT: WATER SYSTEMS	AREA LOCATION SYSTEMS	36-006545, 36-008546, 36-013549
SB-01813	NADB-R - 1061813; Voided - 88-7.4	1988	SWANSON, MARK T.	CULTURAL RESOURCES SURVEY OF A 150-ACRE TRACT, BEAUMONT GLEN PROJECT, LOMA LINDA, SAN BERNARDINO COUNTY, CALIFORNIA	RESEARCH ASSOCIATES	36-006169
SB-01837	NADB-R - 1061837; Voided - 88-11.5	1988	GOLDBERG, SUSAN K. and JEANNE E. ARNOLD	PREHISTORIC SITES IN THE PRADO BASIN, CALIFORNIA: REGIONAL CONTEXT AND SIGNIFICANCE EVALUATION	INFOTEC	36-001543, 36-001570, 36-001571, 36-002259, 36-002260, 36-002845, 36-004032, 36-005096, 36-005241, 36-005242, 36-005243, 36-005244, 36-005245, 36-060002
SB-01852	NADB-R - 1061852; Voided - 89-1.6	1989	HAMPSON, R. PAUL and MARK T. SWANSON	CULTURAL RESOURCES SURVEY, SAN TIMOTEO WASH FLOOD CONTROL PROJECT	GREENWOOD & ASSOCIATES	36-006008, 36-006169, 36-006173, 36-006174
SB-02027	NADB-R - 1062027; Voided - 89-0.5	1989	HARLEY, R. BRUCE	DID MISSION SAN GABRIEL HAVE TWO ASISTENCIAS?: THE CASE OF RANCHO SAN BERNARDINO	SAN BERNARDINO COUNTY MUSEUM ASSOCIATION QUARTERLY 36 (4):1-69	36-002307
SB-02114	NADB-R - 1062114; Voided - 90-6.9	1990	DUFFIELD, ANNE Q. and JEANETTE A. MCKENNA	THE SAN BERNARDINO ASISTENCIA: A STRUCTURAL HISTORY, AS REVEALED BY THE DOCUMENTS IN THE ASISTENCIA FILE, SAN BERNARDINO COUNTY MUSEUM, REDLANDS, CALIFORNIA	HATHEWAY & MCKENNA	36-002307
SB-02419	NADB-R - 1062419; Voided - 91-5.8	1991	HALLARAN, KEVIN	CULTURAL RESOURCES ASSESSMENT: WELL NO. 38, CITY OF REDLANDS, SAN BERNARDINO COUNTY	UNIV. OF CALIFORNIA, RIVERSIDE, ARCHAEOLOGICAL RESEARCH UNIT	
SB-02485	NADB-R - 1062485; Voided - 91-12.3	1991	WHITE, ROBERT S.	AN ARCHAEOLOGICAL ASSESSMENT OF A 2+/- ACRE PARCEL LOCATED IMMEDIATELY NORTHEAST OF THE INTERSECTION OF IOWA STREET AND BARTON ROAD, CITY OF REDLANDS, SAN BERNARDINO COUNTY	ARCHAEOLOGICAL ASSOCIATES	
SB-02504	NADB-R - 1062504; Voided - 92-2.5	1992	ALEXANDROWICZ, J. STEPHEN, ANNE Q. DURRIELD-STOLL, and SUSAN R. ALEXANDROWICZ	A CULTURAL RESOURCES INVESTIGATION FOR THE PROPOSED CONSTRUCTION SITE OF THE THAI SEVENTH-DAY ADVENTIST CHURCH OF SOUTHERN CALIFORNIA, REDLANDS, SAN BERNARDINO COUNTY, CALIFORNIA	ARCHAEOLOGICAL CONSULTING SERVICES	36-007083

Report List

ALW1801

Report No.	Other IDs	Year	Author(s)	Title	Affiliation	Resources
SB-02625	NADB-R - 1062625; Voided - 92-3.7	1992	SWOPE, KAREN K and MICHAEL K. LERCH	CULTURAL RESOURCES ASSESSMENT OF THE BARTON CENTER OF REDLANDS, MARIGOLD FARMS, CITY OF REDLANDS, SAN BERNARDINO COUNTY, CALIFORNIA	MICHAEL K. LERCH & ASSOCIATES	36-006857, 36-007139
SB-02855	NADB-R - 1062855	1994	MCKENNA, JEANETTE A.	CULTURAL RESOURCES INVESTIGATIONS OF THE FREITZSCHE PROPERTY, 10885 NEW JERSEY STREET, LOMA LINDA/BRYN MAWR, SAN BERNARDINO COUNTY, CA	MCKENNA ET AL	36-007829
SB-02963	NADB-R - 1062963	1992	HAENSZEL, ARDA	MORMONS IN SAN BERNARDINO	SAN BERNARDINO COUNTY MUSEUM ASSOCIATION QUARTERLY 39 (3):3-39	
SB-03083	NADB-R - 1063083	1995	JULIANA, CAMILLE L.	CA-SBR-2307H (ASISTENCIA MISSION), SAN BERNARDINO COUNTY, CA, MONITORING REPORT--GAS LINE TRENCHING PROJECT	CAP	36-002307
SB-03139	NADB-R - 1063139	1993	SWOPE, KAREN K. and M.K. LERCH	CULTURAL RESOURCE ASSESSMENT OF THE LADERA PARTNERS/R.J. CROWLEY HOMES PROJECT, CITY OF REDLANDS, SAN BERNARDINO COUNTY, CA. 13PP	M.K. LERCH & ASSOCIATES	
SB-03731	NADB-R - 1063731	1978	SAN BERNARDINO COUNTY TRANSPORTATION DEPT	DOCUMENTATION OF ROCK WALL. 15PP	SAN BERNARDINO COUNTY TRANSPORTATION DEPT	36-016640
SB-03741	NADB-R - 1063741	2002	DUKE, CURT	CINGULAR WIRELESS FACILITY SB231- 01, SAN BERNARDINO COUNTY, CA. 5PP	LSA	
SB-03754	NADB-R - 1063754	1998	CHACE, PAUL G.	AN ARCHAEOLOGICAL RESOURCES SURVEY: CREEKSIDE GARDENS-SUNSET HAVEN, CITY OF REDLANDS, SAN BERNARDINO COUNTY. 35PP	PAUL G. CHACE & ASSOCIATES	
SB-03757	NADB-R - 1063757	1999	WENZELL, STEPHEN	ARCHAEOLOGICAL MONITORING AT CITY OF REDLANDS WELL. 4PP	ARCHAEOLOGICAL RESEARCH UNIT	
SB-03953	NADB-R - 1063953	2003	DAHDL, MIRIAM	HISTORICAL/ARCHAEOLOGICAL RESOURCES SURVEY REPORT: APN: 0292-161-01, 04 & 05, CITY OF LOMA LINDA, SAN BERNARDINO COUNTY, CA. 22PP	CRM TECH	36-008092, 36-010877, 36-020135

Report List

ALW1801

Report No.	Other IDs	Year	Author(s)	Title	Affiliation	Resources
SB-03954	NADB-R - 1063954	2003	TANG, BAI T.	HISTORICAL RESEARCH AND ARCHAEOLOGICAL TESTING ON SITES: CA-SBR-8092H AND 36-020135--AN ADDENDUM TO HISTORICAL RESEARCH AND ARCHAEOLOGICAL TESTING SURVEY REPORT ON APN: 0292-161-01, 04 & 05, CITY OF LOMA LINDA, SAN BERNARDINO COUNTY,CA.12PP	CRM TECH	36-008092, 36-020135
SB-04039	NADB-R - 1064039	2004	BUDINGER, FRED	AN ARCHAEOLOGICAL RESOURCE SURVEY OF APPROXIMATELY 6 ACRES FOR TEH MKJ IOWA COMMERCE CENTER, LLC PROJECT LOCATED AT IOWA ST & CITRUS AVE IN THE CITY OF REDLANDS, SAN BERNARDINO COUNTY, CA. 33PP	TETRA TECH	
SB-04040	NADB-R - 1064040	2003	DAH DUL, MIRIAM	HISTORICAL/ARCHAEOLOGICAL RESOURCES SURVEY REPORT: ASSESSOR PARCEL #'S 0292-152-40, 41 & 42 IN THE CITY OF REDLANDS, SAN BERNARDINO COUNTY, CA. 13PP	CRM TECH	
SB-04042	NADB-R - 1064042	2002	DICE, MICHAEL	AN ARCHAEOLOGICAL RESOURCES ASESSMENT OF TEH MISSION GLEN PROJECT, EASTERN SECTION, A 41 +/- ACRE SITE LOCATED IN THE CITY OF LOMA LINDA, SAN BERNARDINO COUNTY, CA. 51PP	MICHAEL BRANDMAN ASSOCIATES	
SB-04059	NADB-R - 1064059	2003	WHITE, LAURIE S. and ROBERT S. WHITE	A CULTURAL RESOURCE ASSESSMENT OF A 1.87 ACRE SITE LOCATED AT 11018 IOWA ST, CITY OF REDLANDS, SAN BERNARDINO COUNTY, CA. 25PP	ARCHAEOLOGICAL ASSOCIATES	36-020133
SB-04583	NADB-R - 1064583	2003	Dice, Michael	Cultural Resources Survey Letter Report: Negative Results for the American Pacific-Loma Linda Project Located on APN #0292-121-37, #0292-121-40, #0292-121-64, #0292-121-78, #0292-121-79 and #0292-131-80, Mission Road, City of Loma Linda, California.		
SB-04584	NADB-R - 1064584	2003	Dice, Michael	A Phase 2 Archaeological and Historical Assessment of Cultural Resources within "The Trails at Mission Park", A Single Family Residential Development Located in the City of Loma Linda, San Bernardino County, California.		

Report List

ALW1801

Report No.	Other IDs	Year	Author(s)	Title	Affiliation	Resources
SB-04585	NADB-R - 1064585	2004	Dice, Michael	Native American Cultural Resources Monitoring Results for "The Trails at Mission Park" Project, City of Loma Linda, California.		
SB-04586	NADB-R - 1064586	2004	Lerch, Michael K.	The Zanja on Mission Road: Location and Evaluation of CA-SBR-8092, University Village Project Area, Loma Linda, California.		
SB-04587	NADB-R - 1064587	2004	Tibbett, Casey	Mission Grove Project in the City of Loma Linda, San Bernardino County.		36-019917, 36-019918
SB-04589	NADB-R - 1064589	2004	Budinger, Fred E.	An Archaeological Resources Survey of 8.6 Acres for the Nevada Street Project Northeast of the Intersection of Redlands Boulevard and Nevada Street (APNs 0292-063-12, -13, -17 and -41) in the City of Redlands, County of San Bernardino, California 92373.		
SB-04590	NADB-R - 1064590	2004	Grant, Martyn	Cultural Resource Assessment: Record Search and Site Visit Results Cingular Site SB-519-01, San Bernardino County, CA.		
SB-04812	NADB-R - 1064812	2004	Dice, Michael	Records Search Results and Site Visit for Sprint Telecommunications Facility SB38XC919E (City Grove), California Street and I-10, Redlands, San Bernardino County, California.		
SB-04813	NADB-R - 1064813	2005	Sander, Jay K.	Cultural Resources Survey of an 8.50 Acre Parcel at Redlands Boulevard and Nevada Street, Redlands, San Bernardino County, California.		
SB-04814	NADB-R - 1064814	2005	Smallwood, Josh	Cultural Resources Report: Historical/Archaeological Survey and Testing on Assessor's Parcel Numbers 0292-162-06, -07, -14 and -15, City of Loma Linda, San Bernardino County, California.		
SB-05161	NADB-R - 1065161	2005	Jacquemain, Terri	Historical Notes on Mission Association Packinghouse, 26522 East Barton Road, Loma Linda, San Bernardino County, California.		
SB-05661	NADB-R - 1065661	2006	Tang, Bai "Tom"	Archaeological Monitoring of Earth-Moving Operations Assessor's Parcel Numbers 0290-162-06, -07, -14 and -15, City of Loma Linda, San Bernardino County, California.		

Report List

ALW1801

Report No.	Other IDs	Year	Author(s)	Title	Affiliation	Resources
SB-05662	NADB-R - 1065662	2006	Glenn, Brian	Cultural Resources Assessment Letter Report for the Approximately 5-Acre Park – Nevada Avenue Project Area, City of Redlands, County of San Bernardino, California.		
SB-05663	NADB-R - 1065663	2007	Smallwood, Josh	Archaeological Monitoring Report: Barton Vineyard Project, Tentative Parcel Map # 16120, City of Loma Linda, San Bernardino County, California.		
SB-06023	NADB-R - 1066023	2007	Crews, Rachel G. and Jay K. Sander	Archaeological Monitoring of a 3.25-Acre Parcel at Barton Road and Iowa Street, Redlands, San Bernardino County, California.		
SB-06027	NADB-R - 1066027	2008	Bholat, Sara and Evelyn N. Chandler	Cultural Resource Monitoring Report for the Loma Linda Federal Credit Union Office Building Project, Loma Linda, San Bernardino County, California.		
SB-06028	NADB-R - 1066028	2008	Forrest, Stephen	American Tower 301006/Redlands CA 7, 351 Alabama Street, Redlands, San Bernardino County, California.		
SB-06437	NADB-R - 1066437	2000	White, Laura S. and Robert S. White	A Cultural Resources Assessment of a 10.0 Acre Site Located at the Southwest Corner of Orange Avenue and Nevada Street, City of Redlands, San Bernardino County.		
SB-06498	NADB-R - 1066498	2004	Northwest Economic Associates and Cultural Systems Research, Inc	Ethnographic Overview of the Northern San Bernardino Forest.		
SB-06636						
SB-06843	NADB-R - 1066843	2010	McKenna, Jeanette A.	A Cultural Resources Investigation of the Proposed Loma Linda University Medical Center Heart and Surgical Campus Expansion: 11.68 Acres of Land Located at 26735 Orange Avenue, Loma Linda, San Bernardino County, California.		36-023406
SB-07044	NADB-R - 1067044	2004	Goodwin, Riordan and Judith Marvin	Cultural Resources Assessment: House Land Development Parcels APNs: 0292-055-01 and 0292-055-05 through -10, Vicinity of Redlands, San Bernardino County, California.		
SB-07307	NADB-R - 10667307	2012	Cotterman, Cary	Cultural Resources Survey Report for the Heritage Park Project, Redlands, San Bernardino County, California.	Ecorp	36-025788

Report List

ALW1801

Report No.	Other IDs	Year	Author(s)	Title	Affiliation	Resources
SB-07368	NADB-R - 1067368	2012	Tang, Bai "Tom" and Harry Quinn	Archaeological and Paleontological Monitoring of Earth-Moving Activities, Yucaipa Valley Water District Regional Brineline Extension Project, Phase III, Cities of Loma Linda and San Bernardino, San Bernardino County, California.		
SB-07458		2012	Tang, Bai "Tom", Michael Hogan, Deirdre Encarnacion, and Nina Gallardo	Identification and Evaluation of Historic Properties: U.S. Department of Veterans Affairs Veterans Health Care Clinic Project, City of Loma Linda, San Bernardino County, California	CRM TECH	
SB-07557	NADB-R - 1067557	2003	Tang, Bai "Tom", Michael Hogan, Miriam Dahdul, Casey Tibbet, and Daniel Ballester	Historical/Archaeological Resources Survey Report: Orchard Park Project, City of Loma Linda, San Bernardino County, California.		
SB-07558	NADB-R - 1067558	2003	Tang, Bai "Tom", Michael Hogan, Miriam Dahdul, Casey Tibbet, and Daniel Ballester	Historical/Archaeological Resources Survey Report: University Village Project, City of Loma Linda, San Bernardino County, California.		
SB-07731	NADB-R - 1067731	2012	Daly, Pamela	Historic Resources Assessment Report of Loma Linda Romanian Seventh-Day Adventist Church (Bryn Mawr Elementary School, P-36-012363), 26271 Mayberry Street, Loma Linda, San Bernardino County, CA 92354.	Daly & Associates	36-012363
SB-07826	NADB-R - 1067826	2014	McKenna, Jeanette A.	A Phase I Cultural Resources Investigation of Citrus Lane Project Area, Assessor's Parcel No. 0292-161-01-0000, City of Loma Linda, San Bernardino County, California.	McKenna et al	
SB-07827	NADB-R - 1067827	2014	McKenna, Jeanette A.	A Phase I Cultural Resources Investigation for the Crossings at Redlands Project Area, Approximately 10 Acres of Land in the Redlands Area of San Bernardino County, California.	McKenna et al	36-024295, 36-024296
SB-07946		2014	Williams, Audry and Andrew Belcourt	Archival Research and Evaluation Results of 33 Cultural Resources for Southern California Edison Company's West of Devers Upgrade Project, Riverside and San Bernardino Counties, California	Southern California Edison	36-006173, 36-006352, 36-012365, 36-020240, 36-026031, 36-026050, 36-026051, 36-026219, 36-026220, 36-026221, 36-026223, 36-026224

Report List

ALW1801

Report No.	Other IDs	Year	Author(s)	Title	Affiliation	Resources
SB-07955		2013	McLean, Roderic, Natalie Brodie, Jacqueline Hall, Shannon Carmack, Phil Fulton, Ingri Quon, Erin Martinelli, Richard Erickson, and Jay Michalsky	Cultural Resources Assessment and Class III Inventory Volume I. West of Devers Project San Bernadino and Riverside Counties, California	LSA Associates, Inc.	36-001134, 36-002311, 36-006173, 36-006352, 36-006847, 36-006855, 36-007139, 36-007168, 36-010330, 36-010565, 36-011624, 36-012365, 36-013888, 36-013889, 36-019920, 36-019926, 36-019927, 36-019928, 36-019929, 36-019930, 36-020240, 36-024295, 36-025603, 36-026030, 36-026031, 36-026032, 36-026033, 36-026034, 36-026035, 36-026036, 36-026037, 36-026038, 36-026039, 36-026040, 36-026041, 36-026042, 36-026043, 36-026044, 36-026045, 36-026046, 36-026047, 36-026048, 36-026049, 36-026050, 36-026051, 36-026219, 36-026220, 36-026221, 36-026222, 36-026223, 36-026224, 36-026225, 36-026226, 36-026227, 36-026228
SB-07963		2015	DeCarlo, Matthew M. and Diane L. Winslow	Engineering Refinements Survey and Recommendations of Eligibility for Cultural Resources with Southern California Edison Company's West of Devers Upgrade Project, Riverside and San Bernardino Counties, California	ASM Affiliates, Inc.	36-006847, 36-006855, 36-007168, 36-027712
SB-07964		2015	DeCarlo, Matthew M. and Diane L. Winslow	Cultural Resources Impact Assessment and Evaluation Status Report for Southern California Edison Company's West of Devers Upgrade Project, Riverside and San Bernardino Counties, California	ASM Affiliates	36-002311, 36-006847, 36-006855, 36-026030
SB-08038	Paleo -	2013	Brunzell, David	Cultural Resources Assessment Hillwood Commerce Center Project, City of Redlands, San Bernardino County, California	BCR Consulting LLC	36-009991
SB-08127	Paleo -	2015	McKenna, Jeanette A.	A Phase I Cultural Resources Investigation of the Orchard Heights Development, Assessor Parcels 0292-161-02, 0292-161-03, and 0292-063-08, Located in the City of Loma Linda, San Bernardino County, California	McKenna et al.	36-027671, 36-027672, 36-029387, 36-029388, 36-029389, 36-029390
SB-08199		2015	Abdo-Hintzman, Kholood and Josh Smallwood	CULTURAL RESOURCES MONITORING REPORT FOR THE REDLANDS COMMERCE CENTER BUILDINGS 1 AND 2 PROJECT CITY OF REDLANDS, SAN BERNARDINO COUNTY, CALIFORNIA	Applied EarthWorks, Inc.	36-028815

Report List

CWW1902

Report No.	Other IDs	Year	Author(s)	Title	Affiliation	Resources
SB-00006	NADB-R - 1060006; Voided - 37-0.1	1937	RUMBLE, JOSEPHINE R.	HISTORY: THE MILL CREEK ZANJA	COUNTY OF SAN BERNARDINO	
SB-00508	NADB-R - 1060508; Voided - 77-6.4A	1977	GREENWOOD, ROBERTA S.	ARCHAEOLOGICAL RESOURCES SURVEY: WEST COAST - MID CONTINENT PIPELINE PROJECT, LONG BEACH TO COLORADO RIVER	GREENWOOD AND ASSOCIATES	36-000715, 36-000716, 36-001573, 36-001576, 36-001632
SB-00509	NADB-R - 1060509; Voided - 77-6.4B	1978	GREENWOOD AND ASSOCIATES	ARCHAEOLOGICAL RESOURCES SURVEY: WEST-COAST - MID-CONTINENT PIPELINE PROJECT, LONG BEACH TO COLORADO RIVER, THE AGUA MANSA ALTERNATE PIPELINE ROUTE	GREENWOOD AND ASSOCIATES	
SB-01499	NADB-R - 1061499; Voided - 85-7.4A-B	1985	FOSTER, JOHN M. and ROBERTA S. GREENWOOD	CULTURAL RESOURCES OVERVIEW: CALIFORNIA PORTION, PROPOSED PACIFIC TEXAS PIPELINE PROJECT	GREENWOOD AND ASSOCIATES	
SB-01764	NADB-R - 1061764; Voided - 88-1.7	1988	HATHEWAY, ROGER G.	A WINDSHIELD SURVEY AND PRELIMINARY ARCHITECTURAL/HISTORICAL INVENTORY OF LOMA LINDA, CALIFORNIA	HATHEWAY & MCKENNA	36-020252
SB-01783	NADB-R - 1061783; Voided - 88-3.5	1988	HORNBECK, DAVID and HOWARD BOTTS	SEVEN OAKS DAM PROJECT: WATER SYSTEMS	AREA LOCATION SYSTEMS	36-006545, 36-008546, 36-013549
SB-01813	NADB-R - 1061813; Voided - 88-7.4	1988	SWANSON, MARK T.	CULTURAL RESOURCES SURVEY OF A 150-ACRE TRACT, BEAUMONT GLEN PROJECT, LOMA LINDA, SAN BERNARDINO COUNTY, CALIFORNIA	RESEARCH ASSOCIATES	36-006169
SB-01840	NADB-R - 1061840; Voided - 88-11.8A-B	1988	APPLE, REBECCA MCCORKLE and JAN E. WOOLEY	MCI RIALTO TO EL PASO FIBER OPTICS PROJECT, INTENSIVE CULTURAL RESOURCE SURVEY, SAN BERNARDINO AND RIVERSIDE COUNTIES, CALIFORNIA	DAMES & MOORE	36-000573, 36-000574, 36-000647
SB-01852	NADB-R - 1061852; Voided - 89-1.6	1989	HAMPSON, R. PAUL and MARK T. SWANSON	CULTURAL RESOURCES SURVEY, SAN TIMOTEO WASH FLOOD CONTROL PROJECT	GREENWOOD & ASSOCIATES	36-006008, 36-006169, 36-006173, 36-006174

Report List

CWW1902

Report No.	Other IDs	Year	Author(s)	Title	Affiliation	Resources
SB-02853	NADB-R - 1062853	1991	FOSTER, JOHN M., JAMES J. SCHMIDT, CARMEN A. WEBER, GWENDOLYN R. ROMANI, and ROBERTA S. GREENWOOD	CULTURAL RESOURCE INVESTIGATION: INLAND FEEDER PROJECT, MWD OF SOUTHERN CA	GREENWOOD & ASSOCIATES	36-006086, 36-006354, 36-006847, 36-006848, 36-006849, 36-006850, 36-006851, 36-006852, 36-006853, 36-006854, 36-006855, 36-006856, 36-006857, 36-006858, 36-006859, 36-006860, 36-006861, 36-006862, 36-006863, 36-006864, 36-006865, 36-006866, 36-006867, 36-006868, 36-006869, 36-006870, 36-006871, 36-006872, 36-006940, 36-007021, 36-007050, 36-007051, 36-007053, 36-007054, 36-007055, 36-007702
SB-04041	NADB-R - 1064041	2003	DICE, MICHAEL	PHASE I CULTURAL RESOURCE SURVEY FOR SPRING TELECOMMUNICATIONS FACILITY CANDIDATE SB38XC927 (PUBLIC WORKS YARD), 26000 BARTON ROAD, LOMA LIINDA, SAN BERARDINO COUNTY, CA. 9PP	MICHAEL BRANDMAN ASSOCIATES	
SB-06291	NADB-R - 1066291	2008	Smith, Francesca, Caprice D. Harper, William Makeda, and John Dietler	Cultural Resource Technical Report: sbX E Street Corridor BRT Project, Cities of Loma Linda and San Bernardino, San Bernardino County, California.		36-006101, 36-007168, 36-017818, 36-020805, 36-020810
SB-06446	NADB-R - 1066446	2008	Chasteen, Carrie	Determinations of Effect Report: sbX E Street Corridor Bus Rapid Transit (BRT) Project, Cities of Loma Linda and San Bernardino, San Bernardino County, California.		
SB-06447	NADB-R - 1066447	2009	Chasteen, Carrie	Addendum Cultural Resources Technical Report: sbX E Street Corridor BRT Project, Cities of Loma Linda and San Bernardino, San Bernardino County, California.		36-020825, 36-020826
SB-06756	NADB-R - 1066756	2009	Andrews, Sherri	Records Search and Survey Results for the Yucaipa Valley Water District Brineline Project.		
SB-07946		2014	Williams, Audry and Andrew Belcourt	Archival Research and Evaluation Results of 33 Cultural Resources for Southern California Edison Company's West of Devers Upgrade Project, Riverside and San Bernardino Counties, California	Southern California Edison	36-006173, 36-006352, 36-012365, 36-020240, 36-026031, 36-026050, 36-026051, 36-026219, 36-026220, 36-026221, 36-026223, 36-026224

Report List

CWW1902

Report No.	Other IDs	Year	Author(s)	Title	Affiliation	Resources
SB-07962		2015	DeCarlo, Mattew M. and Winslow, Diane L.	Results of Archaeological Testing at Guachama Rancheria, P-36-002311; CA-SBR-2311H, for the Southern California Edison Company's West of Dever's Upgrade Project, San Bernadino County, California	ASM Affiliates, Inc.	36-002311

APPENDIX B

NATIVE AMERICAN SCOPING

NATIVE AMERICAN NOTIFICATION RECORD

Native American Notification for the 10797 New Jersey Street Industrial Project in the City of Redlands

Date LSA Requested Sacred Lands File Search: April 4, 2019

Date Native American Heritage Commission Replied: April 16, 2019

Results of Sacred Lands File Search: indicated positive results and recommended LSA contact the groups/individuals listed below.

Date designated groups/individuals were notified: November 6, 2019, and February 6, 2020.

Groups Contacted	Date LSA e-mailed Tribes	Date and Results of Responses
Agua Caliente Band of Cahuilla Indians Jeff Grubbe, Chairperson Cahuilla Luiseno	11/6/19	12/9/19: Lacy Padilla (Cultural Resources Technician) responded indicating the project is within the Tribe's Traditional use area and requested a cultural resources inventory of the project area by a qualified archaeologist prior to any development activities, a copy of the records search with associated survey reports and site records from the information center and copies of any cultural resource documentation (report and site records) generated by this project.
Agua Caliente Band of Cahuilla Indians Patricia Garcia-Plotkin, THPO Cahuilla Luiseno	11/6/19	
Augustine Band of Cahuilla Mission Indians Amanda Vance, Chairperson Cahuilla	11/6/19 and 2/6/2020	
Cabazon Band of Mission Indians Doug Welmas, Chairperson Cahuilla	11/6/19 and 2/6/2020	
Cahuilla Band of Indians Daniel Salgado, Chairperson Cahuilla	11/6/19 and 2/6/2020	
Los Coyotes Band of Mission Indians Shane Chapparosa, Chairperson Cahuilla	11/6/19 and 2/6/2020	
Morongo Band of Mission Indians Robert Martin, Chairperson Cahuilla Serrano	11/6/19 and 2/6/2020	
Morongo Band of Mission Indians Denisa Torres, Cultural Resources Manager Cahuilla Serrano	11/6/19 and 2/6/2020	
Ramona Band of Cahuilla Mission Indians John Gomez, Environmental Coordinator Cahuilla	11/6/19 and 2/6/2020	
Ramona Band of Cahuilla Mission Indians	11/6/19 and	

Groups Contacted	Date LSA e-mailed Tribes	Date and Results of Responses
Joseph Hamilton, Chairperson Cahuilla	2/6/2020	
San Fernando Band of Mission Indians Donna Yocum, Chairperson Kitanemuk Vanyume Tataviam	11/6/19	11/7/19: Ms. Yokum responded and deferred to San Manuel.
San Manuel Band of Mission Indians Lee Clauss, Director of Cultural Resources Serrano	11/6/19	11/7/19: Ms. Jessica Mauck responded and indicated that while the project is located within an SLF that the NAHC has on file for this community, SMBMI is unlikely to have concerns with the project due to the existing development on site and that she will respond to the Lead Agency, on behalf of SMBMI, upon receipt of the formal CEQA notice from the Lead Agency.
Santa Rosa Band of Cahuilla Indians Mercedes Estrada Cahuilla	11/6/19 and 2/6/2020	
Santa Rosa Band of Mission Indians Steven Estrada, Chairperson Cahuilla	11/6/19 and 2/6/2020	
Serrano Nation of Mission Indians Goldie Walker, Chairperson Serrano	N/A	Ms. Walker passed away in April 2018.
Soboba Band of Luiseno Indians Joseph Ontiveros, Cultural Resource Department Cahuilla Luiseno	11/6/19	11/6/19: Mr. Ontiveros responded indicating they have received the request and are currently preparing a response and requested that in the future, please copy our Cultural Resource Specialist, Jessica Valdez on all correspondence.
Soboba Band of Luiseno Indians Scott Cozart, Chairperson Cahuilla Luiseno	11/6/19 and 2/6/2020	
Torres-Martinez Desert Cahuilla Indians Michael Mirelez, Cultural Resource Coordinator Cahuilla	11/6/19 and 2/6/2020	

**Native American Heritage Commission
Native American Contact List
San Bernardino County
4/16/2019**

**Agua Caliente Band of Cahuilla
Indians**

Patricia Garcia-Plotkin, Director
5401 Dinah Shore Drive Cahuilla
Palm Springs, CA, 92264
Phone: (760) 699 - 6907
Fax: (760) 699-6924
ACBCI-THPO@aguacaliente.net

**Agua Caliente Band of Cahuilla
Indians**

Jeff Grubbe, Chairperson
5401 Dinah Shore Drive Cahuilla
Palm Springs, CA, 92264
Phone: (760) 699 - 6800
Fax: (760) 699-6919

**Augustine Band of Cahuilla
Mission Indians**

Amanda Vance, Chairperson
P.O. Box 846 Cahuilla
Coachella, CA, 92236
Phone: (760) 398 - 4722
Fax: (760) 369-7161
hhaines@augustinetribe.com

**Cabazon Band of Mission
Indians**

Doug Welmas, Chairperson
84-245 Indio Springs Parkway Cahuilla
Indio, CA, 92203
Phone: (760) 342 - 2593
Fax: (760) 347-7880
jstapp@cabazonindians-nsn.gov

Cahuilla Band of Indians

Daniel Salgado, Chairperson
52701 U.S. Highway 371 Cahuilla
Anza, CA, 92539
Phone: (951) 763 - 5549
Fax: (951) 763-2808
Chairman@cahuilla.net

**Los Coyotes Band of Cahuilla
and Cupeño Indians**

John Perada, Environmental
Director
P. O. Box 189 Cahuilla
Warner Springs, CA, 92086
Phone: (760) 782 - 0712
Fax: (760) 782-2730

**Los Coyotes Band of Cahuilla
and Cupeño Indians**

Shane Chapparosa, Chairperson
P.O. Box 189 Cahuilla
Warner Springs, CA, 92086-0189
Phone: (760) 782 - 0711
Fax: (760) 782-0712
Chapparosa@msn.com

**Morongo Band of Mission
Indians**

Robert Martin, Chairperson
12700 Pumarra Road Cahuilla
Banning, CA, 92220 Serrano
Phone: (951) 849 - 8807
Fax: (951) 922-8146
dtorres@morongo-nsn.gov

**Morongo Band of Mission
Indians**

Denisa Torres, Cultural Resources
Manager
12700 Pumarra Road Cahuilla
Banning, CA, 92220 Serrano
Phone: (951) 849 - 8807
Fax: (951) 922-8146
dtorres@morongo-nsn.gov

Ramona Band of Cahuilla

Joseph Hamilton, Chairperson
P.O. Box 391670 Cahuilla
Anza, CA, 92539
Phone: (951) 763 - 4105
Fax: (951) 763-4325
admin@ramonatribe.com

This list is current only as of the date of this document. Distribution of this list does not relieve any person of statutory responsibility as defined in Section 7050.5 of the Health and Safety Code, Section 5097.94 of the Public Resource Section 5097.98 of the Public Resources Code.

This list is only applicable for contacting local Native Americans with regard to cultural resources assessment for the proposed 10797 New Jersey Street Industrial Project, San Bernardino County.

**Native American Heritage Commission
Native American Contact List
San Bernardino County
4/16/2019**

Ramona Band of Cahuilla

John Gomez, Environmental
Coordinator
P. O. Box 391670 Cahuilla
Anza, CA, 92539
Phone: (951) 763 - 4105
Fax: (951) 763-4325
jgomez@ramonatribes.com

**Soboba Band of Luiseno
Indians**

Scott Cozart, Chairperson
P. O. Box 487 Cahuilla
San Jacinto, CA, 92583 Luiseno
Phone: (951) 654 - 2765
Fax: (951) 654-4198
jontiveros@soboba-nsn.gov

**San Fernando Band of Mission
Indians**

Donna Yocum, Chairperson
P.O. Box 221838 Kitanemuk
Newhall, CA, 91322 Vanyume
Phone: (503) 539 - 0933 Tataviam
Fax: (503) 574-3308
ddyocum@comcast.net

**Soboba Band of Luiseno
Indians**

Joseph Ontiveros, Cultural
Resource Department
P.O. BOX 487 Cahuilla
San Jacinto, CA, 92581 Luiseno
Phone: (951) 663 - 5279
Fax: (951) 654-4198
jontiveros@soboba-nsn.gov

**San Manuel Band of Mission
Indians**

Lee Clauss, Director of Cultural
Resources
26569 Community Center Drive Serrano
Highland, CA, 92346
Phone: (909) 864 - 8933
Fax: (909) 864-3370
lclauss@sanmanuel-nsn.gov

**Torres-Martinez Desert Cahuilla
Indians**

Michael Mirelez, Cultural
Resource Coordinator
P.O. Box 1160 Cahuilla
Thermal, CA, 92274
Phone: (760) 399 - 0022
Fax: (760) 397-8146
mmirelez@tmdci.org

**Santa Rosa Band of Cahuilla
Indians**

Steven Estrada, Chairperson
P.O. Box 391820 Cahuilla
Anza, CA, 92539
Phone: (951) 659 - 2700
Fax: (951) 659-2228
mflaxbeard@santarosacahuilla-
nsn.gov

**Serrano Nation of Mission
Indians**

Goldie Walker, Chairperson
P.O. Box 343 Serrano
Patton, CA, 92369
Phone: (909) 528 - 9027

This list is current only as of the date of this document. Distribution of this list does not relieve any person of statutory responsibility as defined in Section 7050.5 of the Health and Safety Code, Section 5097.94 of the Public Resource Section 5097.98 of the Public Resources Code.

This list is only applicable for contacting local Native Americans with regard to cultural resources assessment for the proposed 10797 New Jersey Street Industrial Project, San Bernardino County.

From: [Rory Goodwin](#)
To: ["ACBCI-THPO@aguacaliente.net"](mailto:ACBCI-THPO@aguacaliente.net)
Cc: [Padilla, Lacy \(TRBL\)](#); ggrubbe@aguacaliente.net
Subject: RE: Native American Scoping for the 10797 New Jersey Street Industrial Project in Redlands (CWW1901)
Date: Wednesday, November 6, 2019 2:33:00 PM
Attachments: [fig1-1 ReqLoc_09-17-2018.pdf](#)

November 6, 2019

Agua Caliente Band of Cahuilla Indians
Patricia Garcia-Plotkin, Director
5401 Dinah Shore Drive
Palm Springs, CA, 92264

Subject: Native American Scoping for the 10797 New Jersey Street Industrial Project (LSA Project No. CWW1901)

Dear Ms. Garcia-Plotkin:

At the direction of the City of Redlands, LSA is conducting scoping notification for the 10797 New Jersey Street industrial Project. The project area includes 4.77 acres in an unsectioned area of Township 1 North, Range 4 West (*Redlands, California* quadrangle; see attached Figure 1). There will be ground disturbance associated with the project.

The results of the Sacred Lands File search conducted by the Native American Heritage Commission for this project were [positive](#). Please let us know if you have any comments.

Sincerely,

LSA ASSOCIATES, INC.

Riordan Goodwin
Archaeologist/Senior Cultural Resources Manager

Attachment: Figure 1 (Project Location)

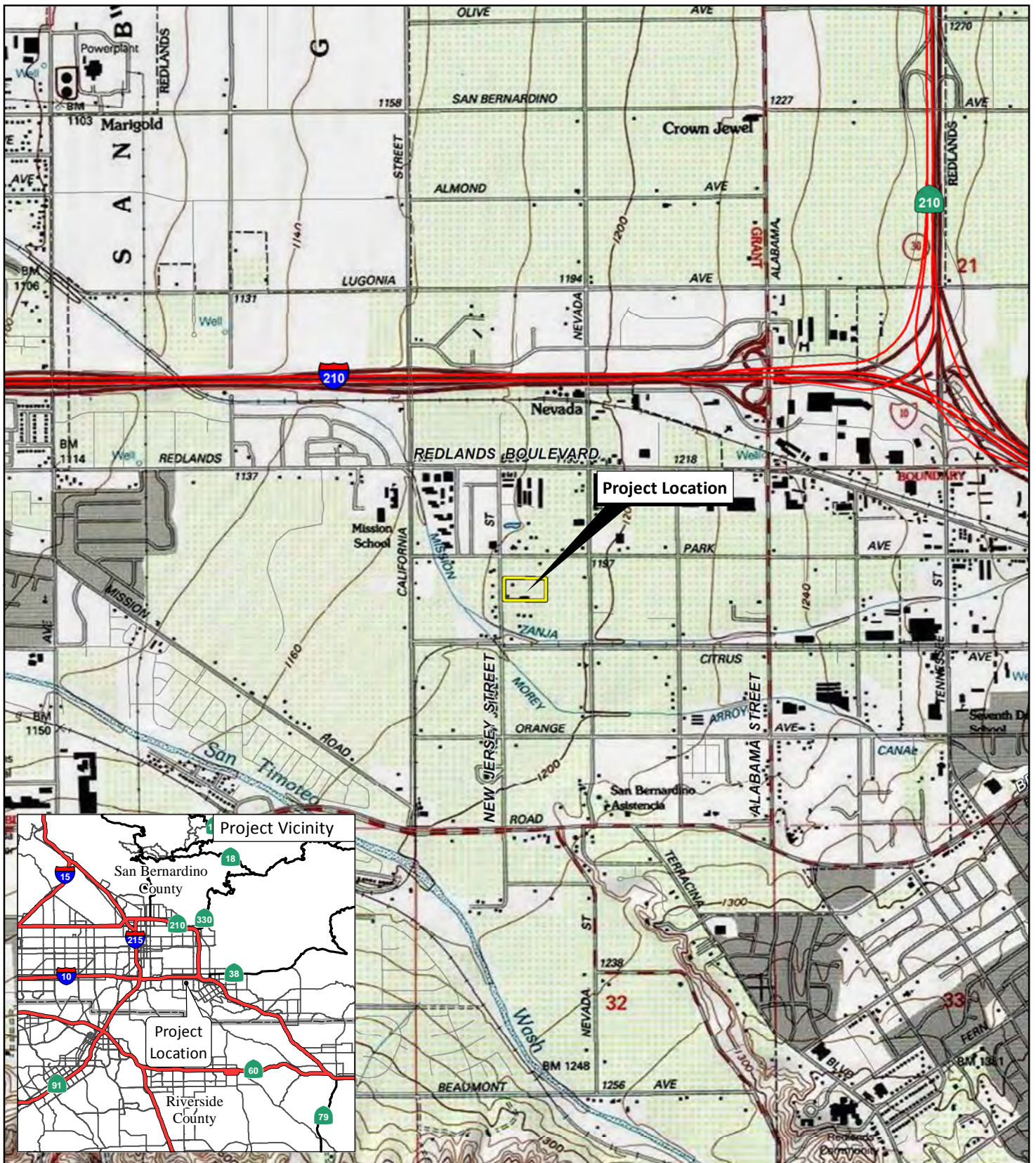
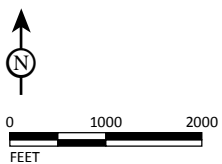


FIGURE 1

LSA



SOURCE: USGS 7.5' Quads: Redlands, 1988, CA; ESRI Streetmap, 2013.

I:\ALN1801\Reports\Cultural\fig1_RegLoc.mxd (9/17/2018)

10797 New Jersey Street Industrial Project
Regional and Project Location



03-027-2019-007

December 09, 2019

[VIA EMAIL TO:rory.goodwin@lsa.net]
LSA Associates
Mr. Riordan Goodwin
1500 Iowa Avenue
Palm Springs, CA 92264

Re: 10797 New Jersey Street Industrial

Dear Mr. Riordan Goodwin,

The Agua Caliente Band of Cahuilla Indians (ACBCI) appreciates your efforts to include the Tribal Historic Preservation Office (THPO) in the 10797 New Jersey Street Industrial project. The project area is not located within the boundaries of the ACBCI Reservation. However, it is within the Tribe's Traditional Use Area. For this reason, the ACBCI THPO requests the following:

- *A cultural resources inventory of the project area by a qualified archaeologist prior to any development activities in this area.
- *A copy of the records search with associated survey reports and site records from the information center.
- *Copies of any cultural resource documentation (report and site records) generated in connection with this project.

Again, the Agua Caliente appreciates your interest in our cultural heritage. If you have questions or require additional information, please call me at (760)699-6956. You may also email me at ACBCI-THPO@aguacaliente.net.

Cordially,

Lacy Padilla
Archaeologist
Tribal Historic Preservation Office
AGUA CALIENTE BAND
OF CAHUILLA INDIANS

From: [Joseph Ontiveros](#)
To: [Rory Goodwin](#)
Cc: [Scott Cozart](#); [Jessica Valdez](#)
Subject: RE: Native American Scoping for the 10797 New Jersey Street Industrial Project in Redlands (CWW1901)
Date: Wednesday, November 6, 2019 4:25:30 PM
Attachments: [loqo1_d797a0c3-9365-497b-9c42-60e830c7158f.png](#)

Rory,

We have received your request and are currently preparing a response. In the future, please copy our Cultural Resource Specialist, Jessica Valdez on all correspondence. This will expedite the process.

Sincerely,



JOSEPH ONTIVEROS

TRIBAL HISTORIC PRESERVATION OFFICER
(951) 654-5544 Ext. 4137
(951) 663-5279 Cell
jontiveros@soboba-nsn.gov

CULTURAL RESOURCE
23906 Soboba Rd. San Jacinto, CA 92583
P.O. Box 487 San Jacinto, CA 92581
www.soboba-nsn.gov

NOTICE: This communication may contain information that is proprietary, privileged, confidential, or otherwise legally exempt from disclosure. It is intended exclusively for the use of the individual or entity to which it is addressed. If you are not the intended recipient, you are not authorized to read, print, retain, copy, or disseminate this message or any part of it. If you have received this message in error, please notify the sender immediately by e-mail and delete all copies of the message.

From: Rory Goodwin <Rory.Goodwin@lsa.net>
Sent: Wednesday, November 06, 2019 4:05 PM
To: Joseph Ontiveros <jontiveros@soboba-nsn.gov>
Cc: Scott Cozart <scozart@soboba-nsn.gov>
Subject: RE: Native American Scoping for the 10797 New Jersey Street Industrial Project in Redlands (CWW1901)

November 6, 2019

Soboba Band of Luiseno Indians
Joseph Ontiveros, Cultural Resource Department
P.O. BOX 487
San Jacinto, CA, 92581

Subject: Native American Scoping for the 10797 New Jersey Street Industrial Project (LSA Project No. CWW1901)

From: [Jessica Mauck](#)
To: [Rory Goodwin](#)
Subject: RE: Native American Scoping for the 10797 New Jersey Street Industrial Project in Redlands (CWW1901)
Date: Thursday, November 7, 2019 4:11:40 PM
Attachments: [image001.png](#)
[image95843c.PNG](#)

Hi Riordan,

Thank you for contacting the San Manuel Band of Mission Indians (SMBMI) regarding the above-referenced project. While it is located within an SLF that the NAHC has on file for this community, SMBMI is unlikely to have concerns with the project due to the existing development on site. I will respond to the Lead Agency, on behalf of SMBMI, upon receipt of the formal CEQA notice from the Lead Agency.

Thank you,

Jessica Mauck

CULTURAL RESOURCES ANALYST

O: (909) 864-8933 x3249

M: (909) 725-9054

26569 Community Center Drive Highland California 92346



From: Lee Clauss

Sent: Wednesday, November 6, 2019 4:49 PM

To: Jessica Mauck

Subject: Fwd: Native American Scoping for the 10797 New Jersey Street Industrial Project in Redlands (CWW1901)

More work in Redlands for your review...

Lee Clauss

DIRECTOR, CULTURAL RESOURCES MANAGEMENT

O: (909) 864-8933

Internal: 50-3248

M: (909) 633-5851

26569 Community Center Drive Highland California 92346



Begin forwarded message:

From: Rory Goodwin <Rory.Goodwin@lsa.net>
Date: November 6, 2019 at 3:45:48 PM PST
To: "'lclauss@sanmanuel-nsn.gov'" <lclauss@sanmanuel-nsn.gov>
Subject: FW: Native American Scoping for the 10797 New Jersey Street Industrial Project in Redlands (CWW1901)

November 6, 2019

San Manuel Band of Mission Indians
Lee Clauss, Director of Cultural Resources
26569 Community Center Drive
Highland, CA 92346

Subject: Native American Scoping for the 10797 New Jersey Street Industrial Project (LSA Project No. CWW1901)

Dear Mr. Clauss:

At the direction of the City of Redlands, LSA is conducting scoping notification for the 10797 New Jersey Street industrial Project. The project area includes 4.77 acres in an unsectioned area of Township 1 North, Range 4 West (*Redlands, California* quadrangle; see attached Figure 1). There will be ground disturbance associated with the project.

The results of the Sacred Lands File search conducted by the Native American Heritage Commission for this project were [positive](#). Please let us know if you have any comments.

Sincerely,

LSA ASSOCIATES, INC.

Riordan Goodwin
Archaeologist/Senior Cultural Resources Manager

Attachment: Figure 1 (Project Location)

For suspicious emails please contact the IT Service Desk at extension 4500 or (909) 863-5700.
If you are on your Outlook client, report the suspicious email by clicking on Report Phish icon in your Outlook toolbar.
If you are on a mobile device, forward the suspicious email to spam@sanmanuel.com.

THIS MESSAGE IS INTENDED ONLY FOR THE USE OF THE INDIVIDUAL OR

ENTITY TO WHICH IT IS ADDRESSED AND MAY CONTAIN INFORMATION THAT IS PRIVILEGED, CONFIDENTIAL AND EXEMPT FROM DISCLOSURE UNDER APPLICABLE LAW. If the reader of this message is not the intended recipient or agent responsible for delivering the message to the intended recipient, you are hereby notified that any dissemination or copying of this communication is strictly prohibited. If you have received this electronic transmission in error, please delete it from your system without copying it and notify the sender by reply e-mail so that the email address record can be corrected. Thank You

Dear Mr. Ontiveros:

At the direction of the City of Redlands, LSA is conducting scoping notification for the 10797 New Jersey Street industrial Project. The project area includes 4.77 acres in an unsectioned area of Township 1 North, Range 4 West (*Redlands, California* quadrangle; see attached Figure 1). There will be ground disturbance associated with the project.

The results of the Sacred Lands File search conducted by the Native American Heritage Commission for this project were [positive](#). Please let us know if you have any comments.

Sincerely,

LSA ASSOCIATES, INC.

Riordan Goodwin

Archaeologist/Senior Cultural Resources Manager

Attachment: Figure 1 (Project Location)

From: [donna](#)
To: [Rory Goodwin](#)
Subject: RE: Native American Scoping for the 10797 New Jersey Street Industrial Project in Redlands (CWW1901)
Date: Thursday, November 7, 2019 8:22:00 AM

Rory,

Thank you for the information regarding American Scoping for the 10797 New Jersey Street Industrial Project (LSA Project No. CWW1901). The San Fernando Band of Mission Indians will defer project to San Manuel Tribe.

Regards,
Donna Yocum, Chairwoman
SFBMI

Sent from [Mail](#) for Windows 10

From: [Rory Goodwin](#)
Sent: Wednesday, November 6, 2019 3:58 PM
To: ddyocum@comcast.net
Subject: RE: Native American Scoping for the 10797 New Jersey Street Industrial Project in Redlands (CWW1901)

November 6, 2019

San Fernando Band of Mission Indians

Donna Yocum, Chairperson

P.O. Box 221838

Newhall, CA, 91322

Subject: Native American Scoping for the 10797 New Jersey Street Industrial Project (LSA Project No. CWW1901)

Dear Ms. Yocum,

At the direction of the City of Redlands, LSA is conducting scoping notification for the 10797

New Jersey Street industrial Project. The project area includes 4.77 acres in an unsectioned area of Township 1 North, Range 4 West (*Redlands, California* quadrangle; see attached Figure 1). There will be ground disturbance associated with the project.

The results of the Sacred Lands File search conducted by the Native American Heritage Commission for this project were [positive](#). Please let us know if you have any comments.

Sincerely,

LSA ASSOCIATES, INC.

Riordan Goodwin

Archaeologist/Senior Cultural Resources Manager

Attachment: Figure 1 (Project Location)

From: [Rory Goodwin](#)
To: hhaines@augustinetribe.com
Subject: FW: Native American Scoping for the 10797 and 10843 New Jersey Street Industrial Project in Redlands (CWW1901/1902)
Date: Thursday, February 6, 2020 11:51:00 AM
Attachments: [Fig1_ProjLoc.pdf](#)
[RE Native American Scoping for the 10797 New Jersey Street Industrial Project in Redlands \(CWW1901\).msg](#)

Dear Ms. Vance,

Please be advised that the project at 10843 New Jersey Street has been combined with the adjacent project at 10797 New Jersey Street (see attached email). Please let us know if you have any comments.

Sincerely,

Rory Goodwin | Senior Cultural Resources Manager
LSA | 1500 Iowa Avenue, Suite 200
Riverside, CA 92507

951-781-9310 Tel

[Website](#)

From: Rory Goodwin
Sent: Wednesday, November 13, 2019 5:35 PM
To: hhaines@augustinetribe.com
Subject: RE: Native American Scoping for the 10843 New Jersey Street Industrial Project in Redlands (CWW1902)

November 13, 2019

Augustine Band of Cahuilla Mission Indians
Amanda Vance, Chairperson
P.O. Box 846
Coachella, CA, 92236

Subject: Native American Scoping for the 10843 New Jersey Street Industrial Project (LSA Project No. CWW1902)

Dear Ms. Vance:

At the direction of the City of Redlands, LSA is conducting scoping notification for the 10843 New Jersey Street industrial Project. The project area includes 4.17 acres in an unsectioned area of Township 1 North, Range 4 West (*Redlands, California* quadrangle; see attached Figure 1). There will be ground disturbance associated with the project.

The results of the Sacred Lands File search conducted by the Native American Heritage Commission for this project were positive. Please let us know if you have any comments.

Sincerely,

LSA ASSOCIATES, INC.

Riordan Goodwin

Archaeologist/Senior Cultural Resources Manager

Attachment: Figure 1 (Project Location)

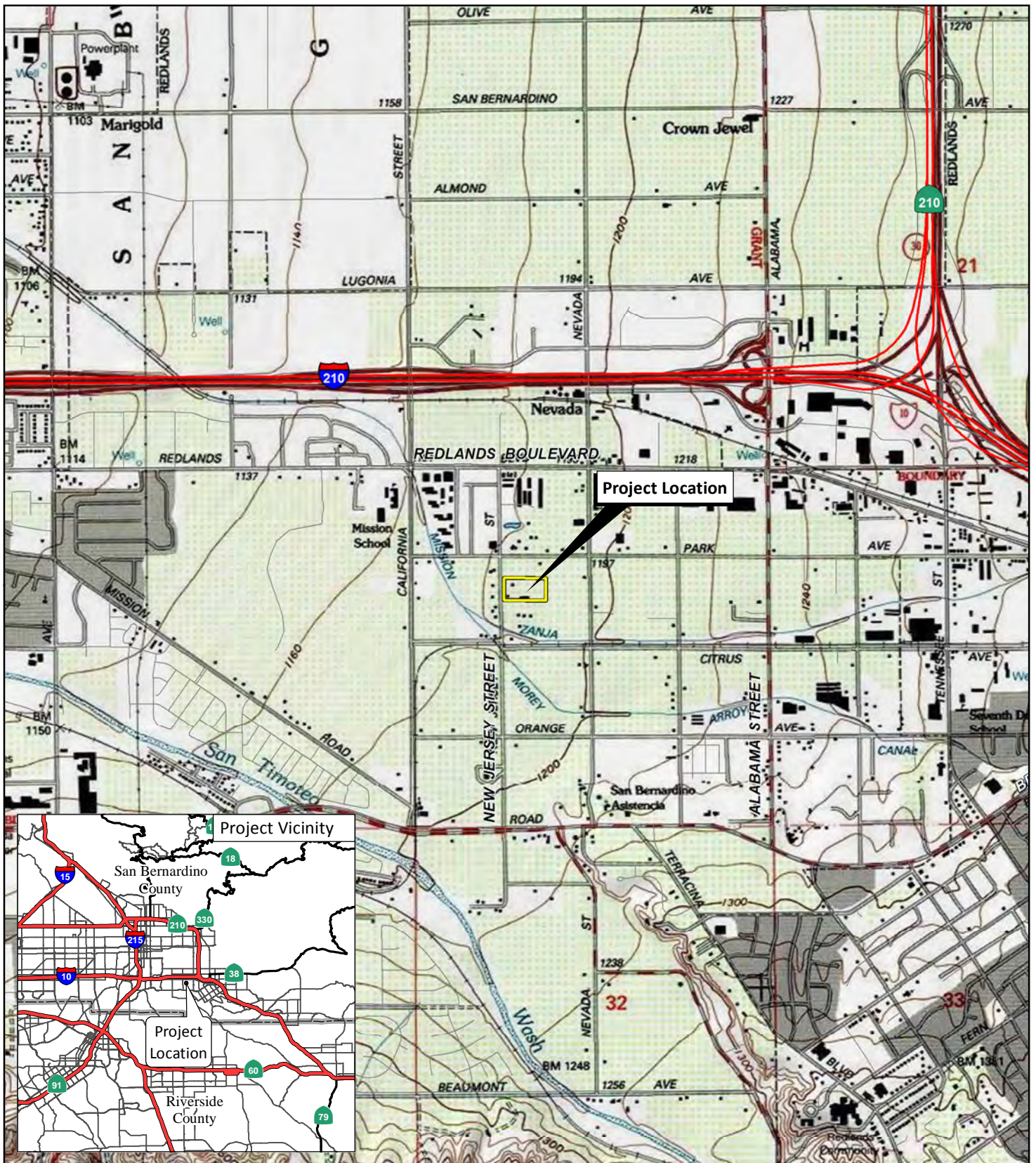
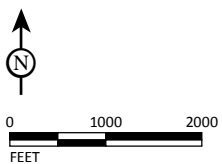


FIGURE 1

LSA



SOURCE: USGS 7.5' Quads: Redlands, 1988, CA; ESRI Streetmap, 2013.

I:\ALN1801\Reports\Cultural\fig1_RegLoc.mxd (9/17/2018)

10797 New Jersey Street Industrial Project
Regional and Project Location

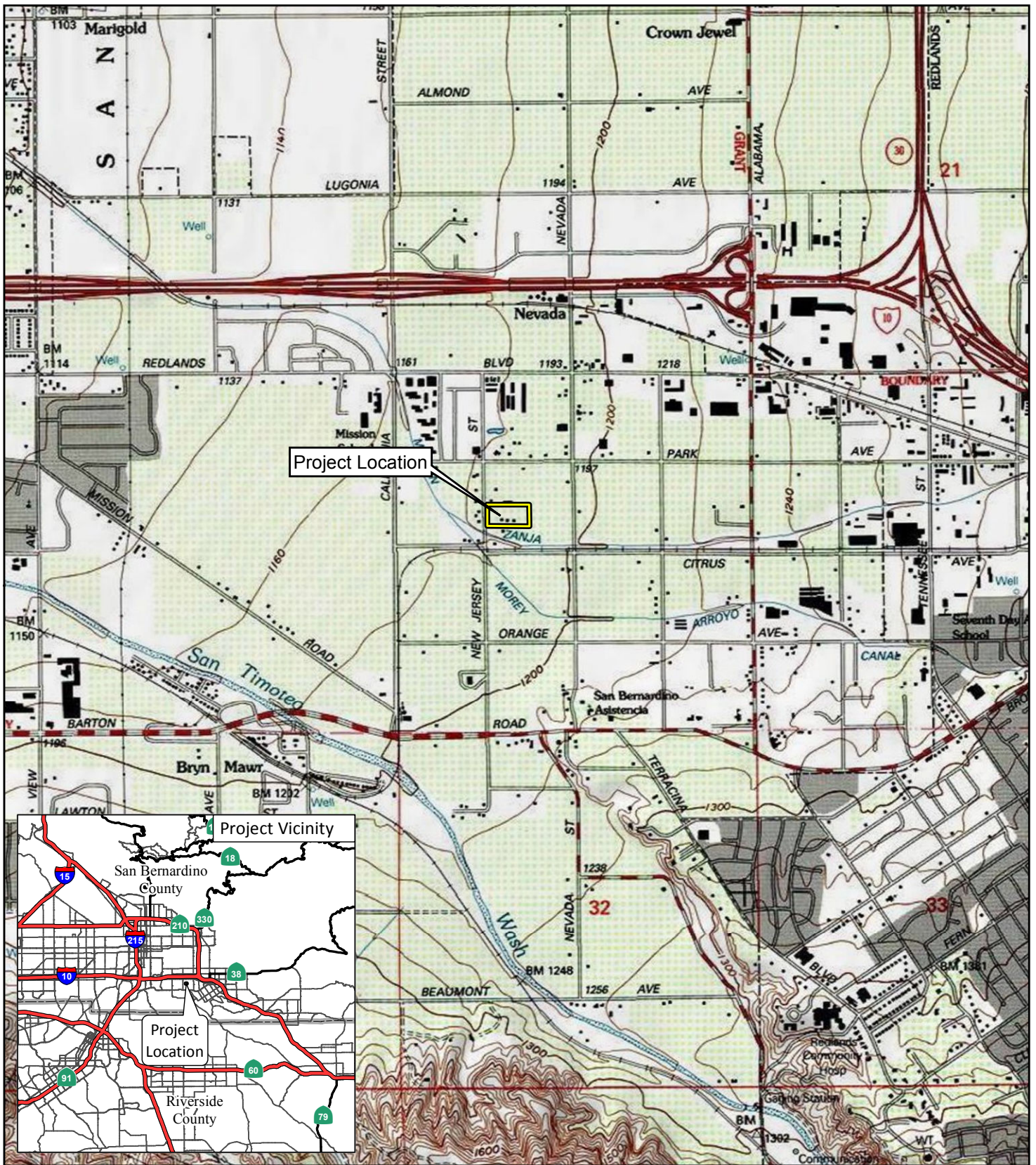
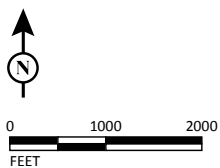


FIGURE 1

LEGEND
 Project Location



SOURCE: USGS 7.5' Quad - Redlands (1988), CA
 I:\CWW1902\GIS\MXD\Cultural\ProjLoc.mxd (11/6/2019)

10843 New Jersey Street Industrial Project
 Regional and Project Location