



## PROJECT TEAM

### CLIENT

PROPERTY ONE, LCC  
 P.O. BOX 7538  
 REDLANDS, CA 92375  
 CONTACT: GLENN FEARON  
 (909) 793-2853 EXT 1940  
 gfearon@esri.com  
 REDLANDS SANTA FE TRAIN DEPOT

### ARCHITECT/CONSERVATOR

ARCHITECTURAL RESOURCES GROUP, INC.  
 360 E. 2ND ST, SUITE 225  
 LOS ANGELES, CA 90012  
 (626) 583-1401  
 CONTACTS: STEVE FARNETH, FAIA, LEED AP  
 (415) 421-1580 EXT 203  
 steve@argsf.com  
 JUSTINE LEONG, AIA, LEED B+C  
 (626) 583-1401 EXT 112  
 j.leong@arg-la.com

### STRUCTURAL ENGINEER

STRUCTURAL FOCUS  
 19210 S. VERMONT AVE.  
 BLDG. B, SUITE 210  
 GARDENA, CA 90248  
 (310) 323-9924  
 CONTACT: DAVID COCKE, S.E., F.SEI  
 dcocke@structuralfocus.com

### CIVIL ENGINEER

CASC ENGINEERING AND CONSULTING  
 1470 E. COOLEY DR.  
 COLTON, CA 92324  
 (909) 783-0101  
 CONTACT: ANTHONY M. MISTRETTA, PE  
 amistretta@cascinc.com

### MECH/ELEC/PLUMB ENGINEERS

DCGA ENGINEERS  
 4750 ONTARIO MILLS PKWY  
 ONTARIO, CA 91764  
 (909) 987-0017

Redlands Santa Fe Train Depot  
 Rehabilitation

Historic and Scenic Preservation  
 Commission Submittal

August 30, 2018

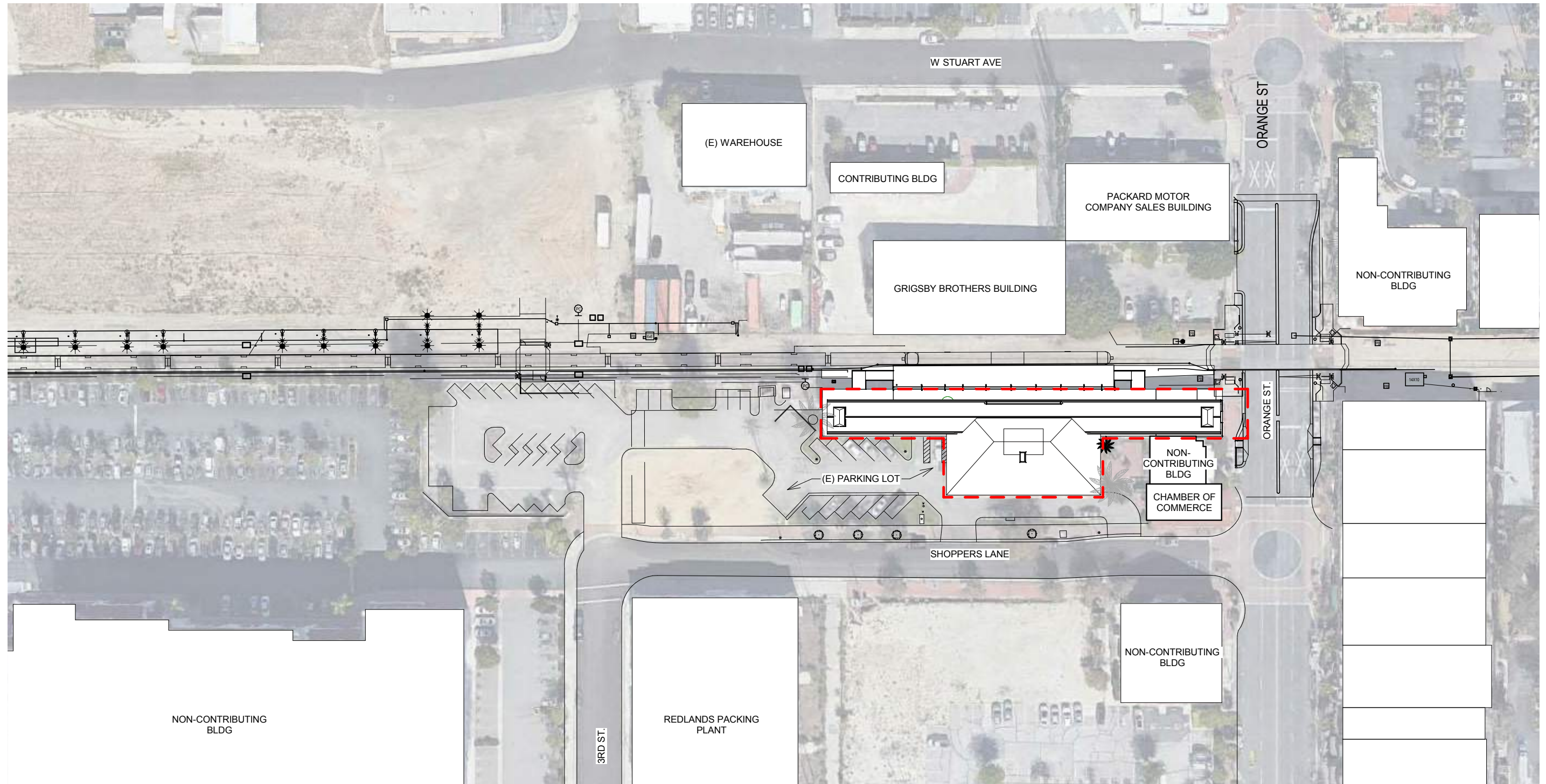
P00



Architectural  
 Resources Group

## REDLANDS SANTA FE TRAIN DEPOT REHABILITATION

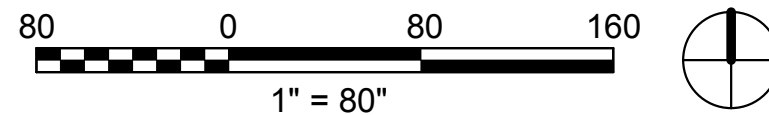
349 ORANGE STREET, REDLANDS, CA



----- EXTENT OF PROJECT SCOPE



# Project Context Plan

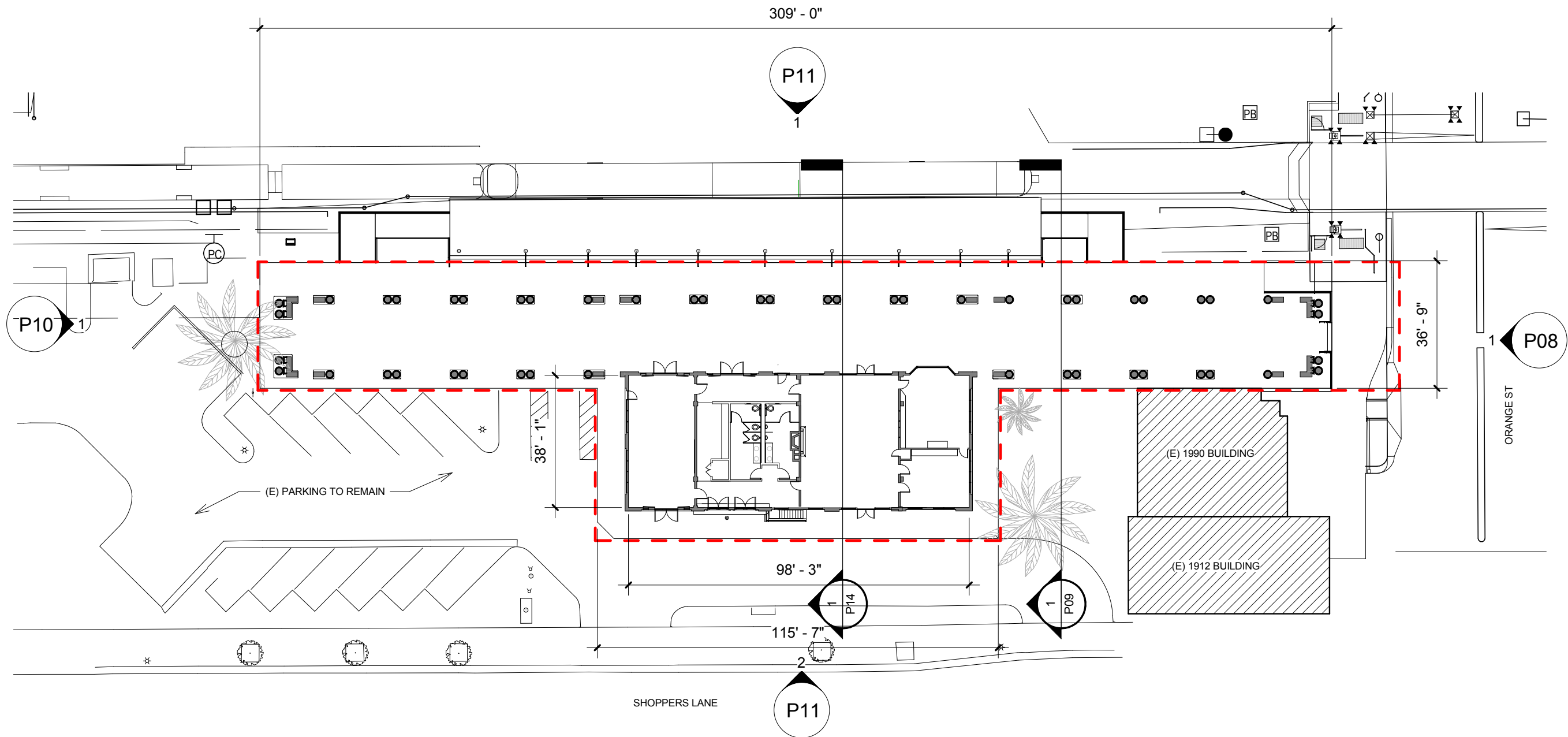


Redlands Santa Fe Train Depot  
Rehabilitation

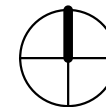
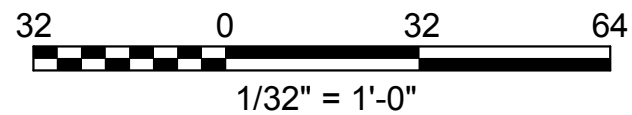
Historic and Scenic Preservation  
Commission Submittal

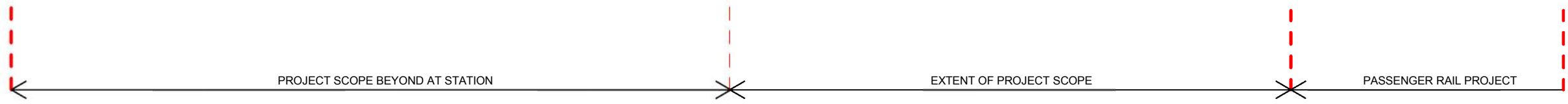
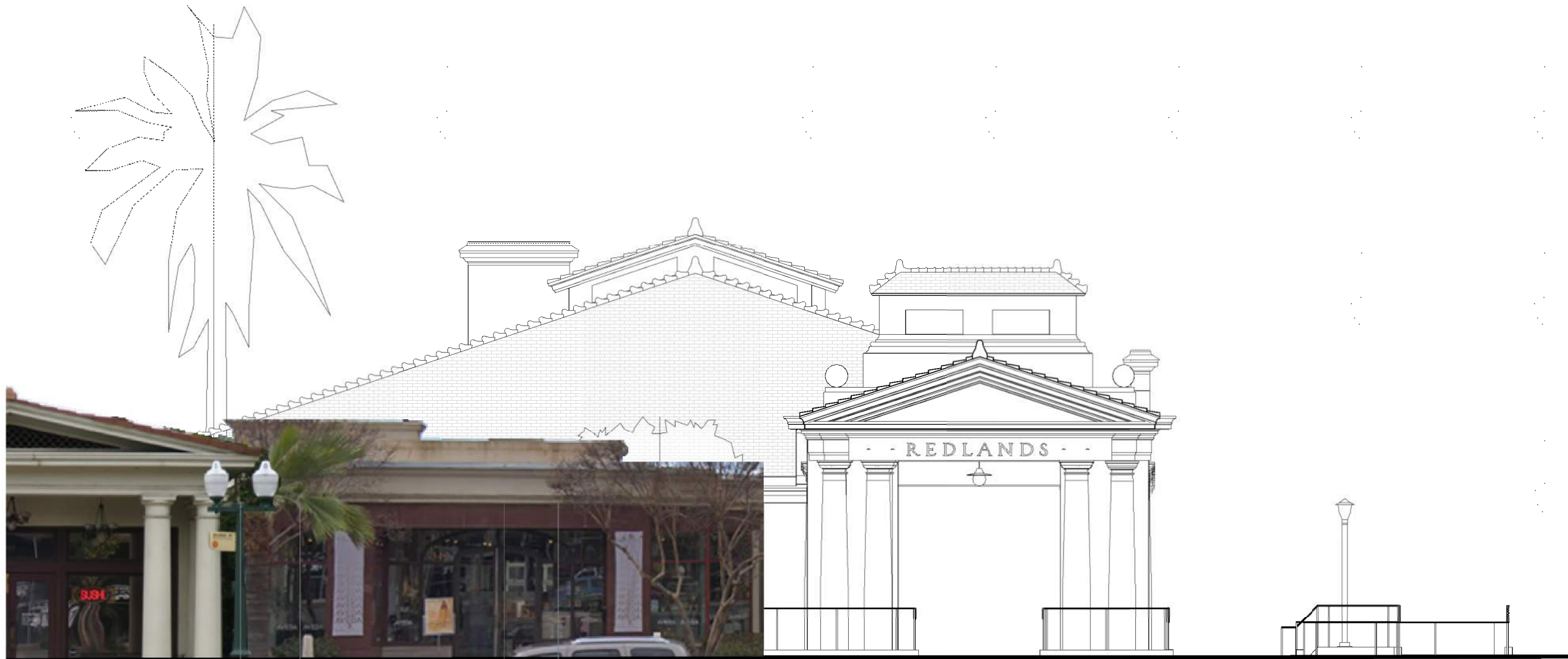
August 30, 2018

P01



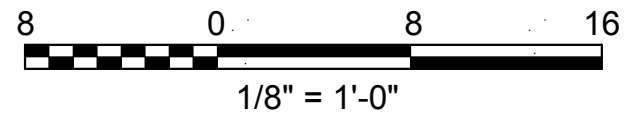
## Proposed Site Plan





Architectural  
Resources Group

## East Elevation from Orange Street

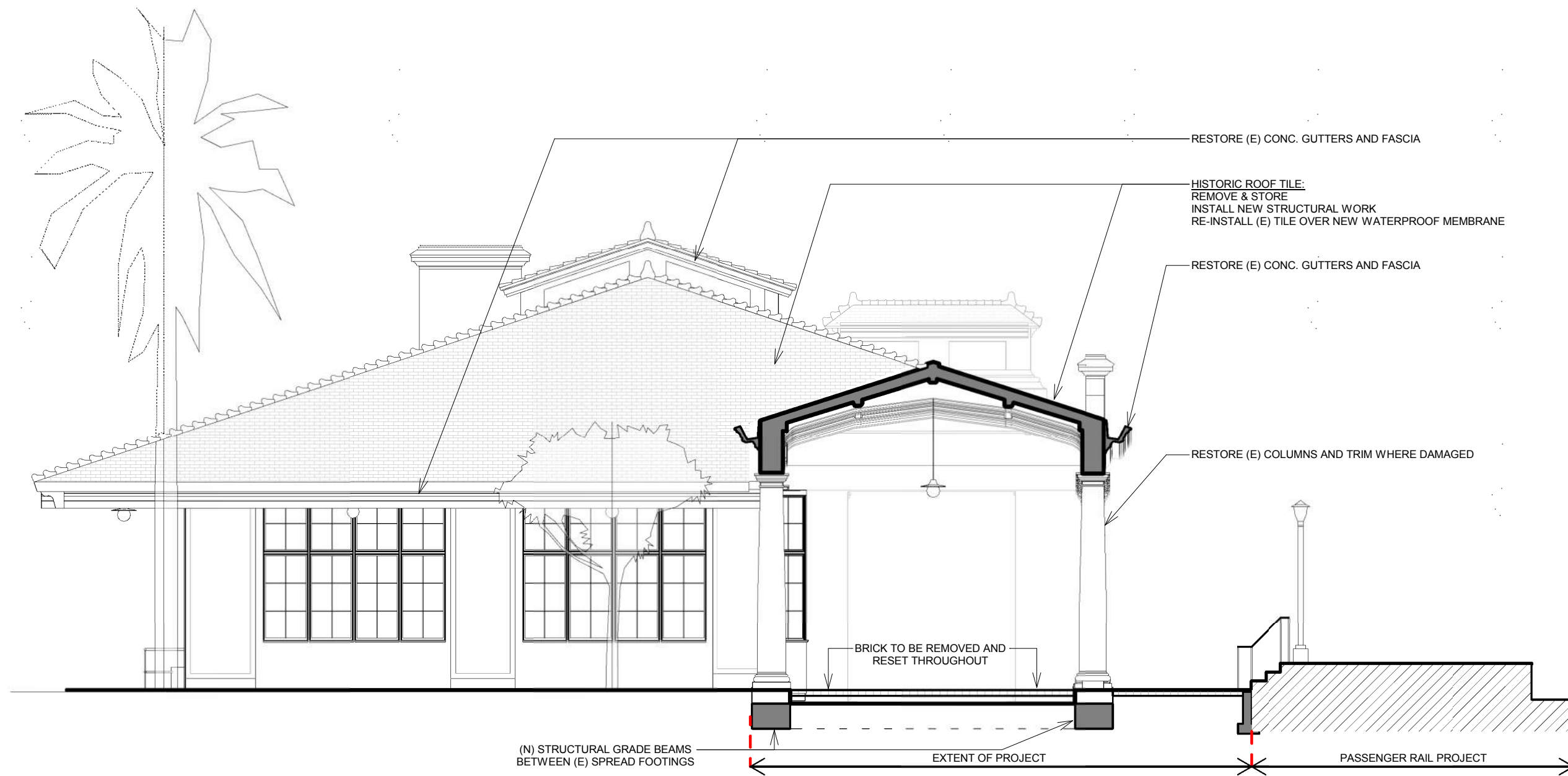


Redlands Santa Fe Train Depot  
Rehabilitation

Historic and Scenic Preservation  
Commission Submittal

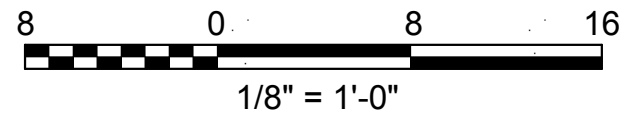
August 30, 2018

P08



Architectural  
Resources Group

## Section through Colonnade



Redlands Santa Fe Train Depot  
Rehabilitation

Historic and Scenic Preservation  
Commission Submittal

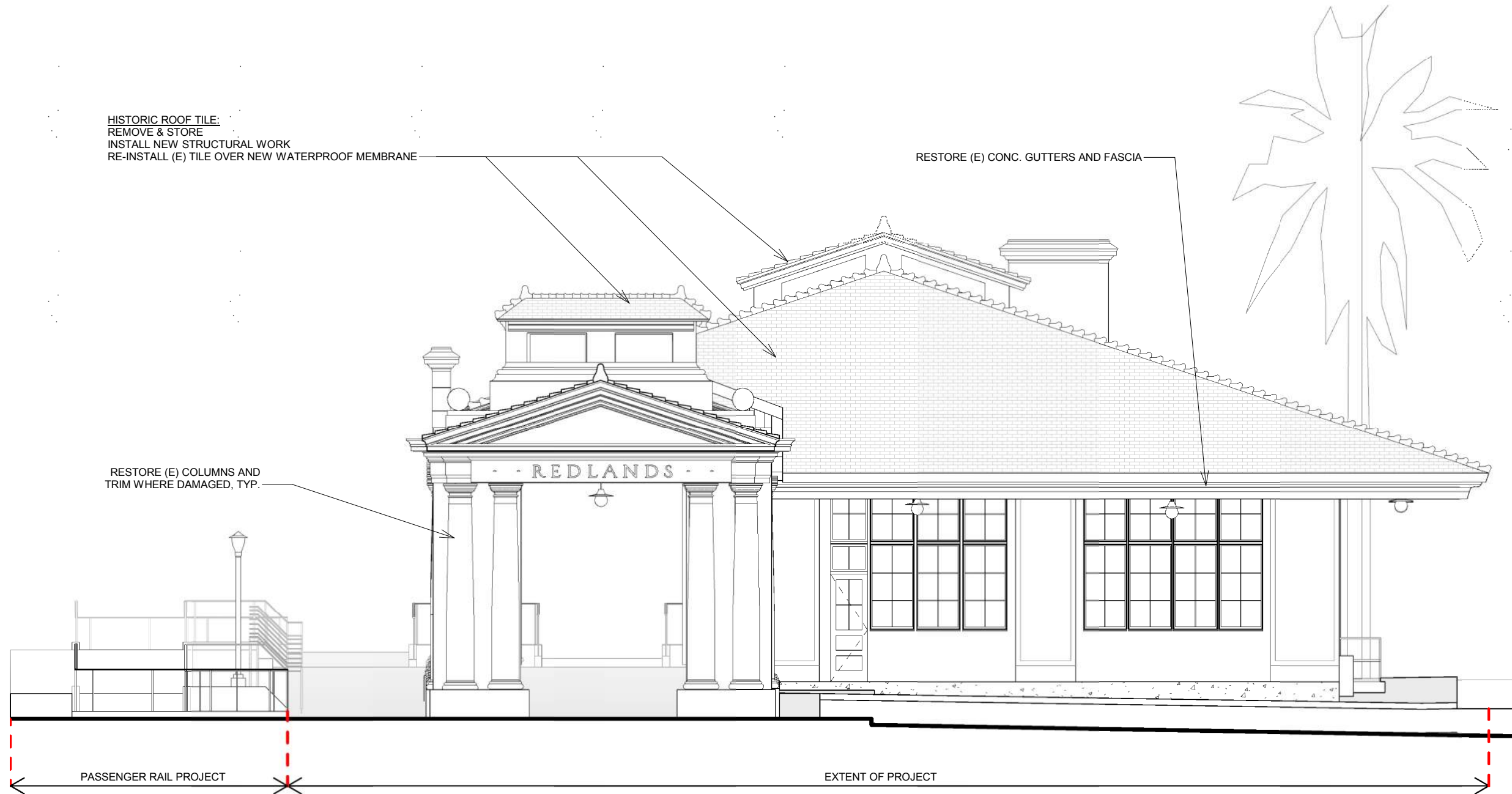
August 30, 2018

P09

HISTORIC ROOF TILE:  
REMOVE & STORE  
INSTALL NEW STRUCTURAL WORK  
RE-INSTALL (E) TILE OVER NEW WATERPROOF MEMBRANE

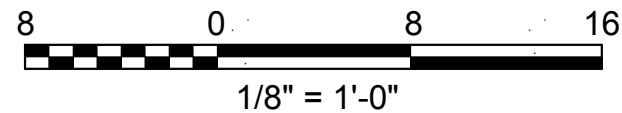
RESTORE (E) CONC. GUTTERS AND FASCIA

RESTORE (E) COLUMNS AND  
TRIM WHERE DAMAGED, TYP.



Architectural  
Resources Group

## West Elevation

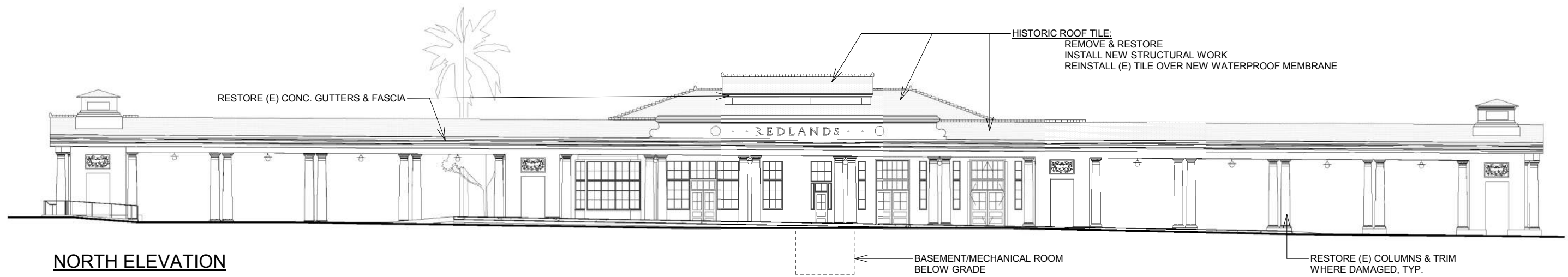


Redlands Santa Fe Train Depot  
Rehabilitation

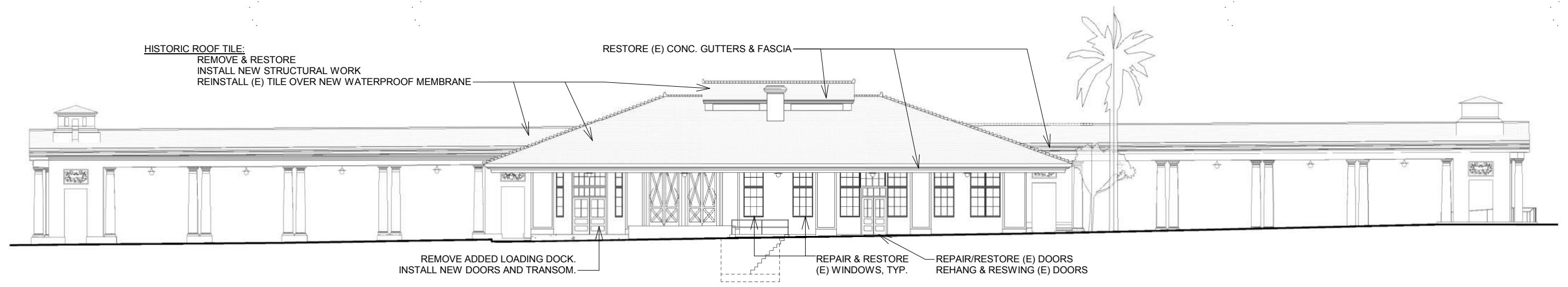
Historic and Scenic Preservation  
Commission Submittal

August 30, 2018

P10

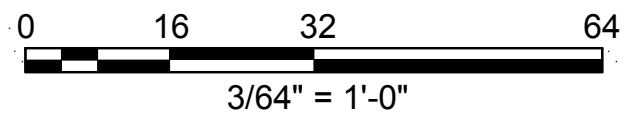


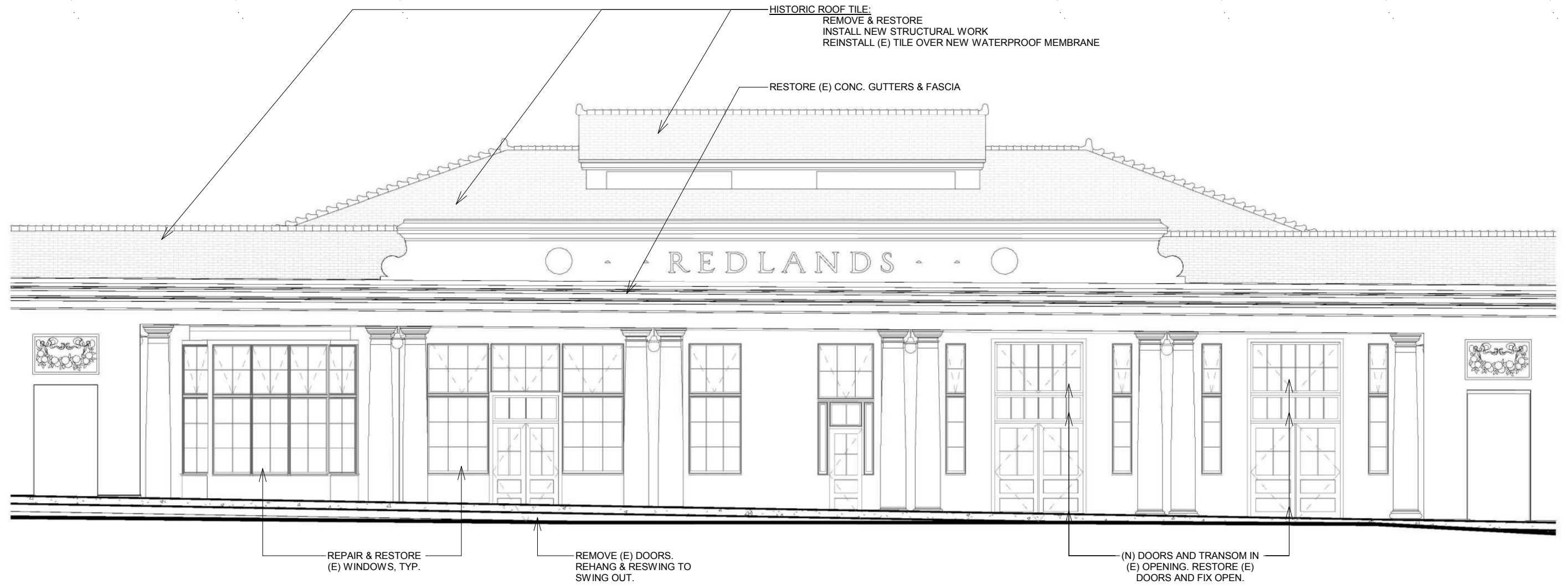
**NORTH ELEVATION**



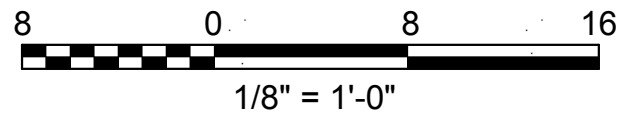
**SOUTH ELEVATION**

## North & South Full Elevations





# North Building Elevation



Architectural  
Resources Group

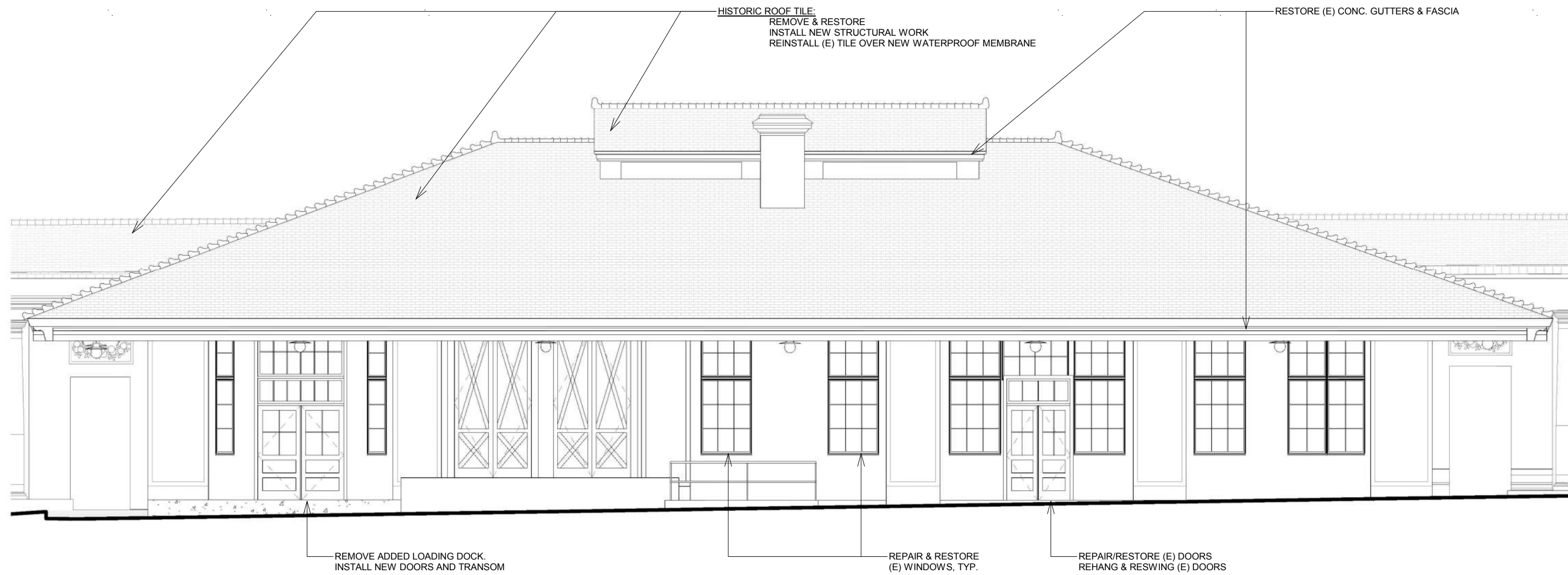
Redlands Santa Fe Train Depot  
Rehabilitation

Historic and Scenic Preservation  
Commission Submittal

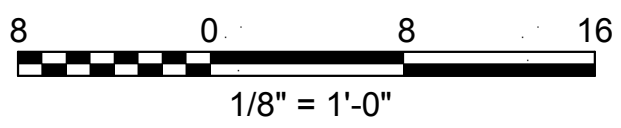
August 30, 2018

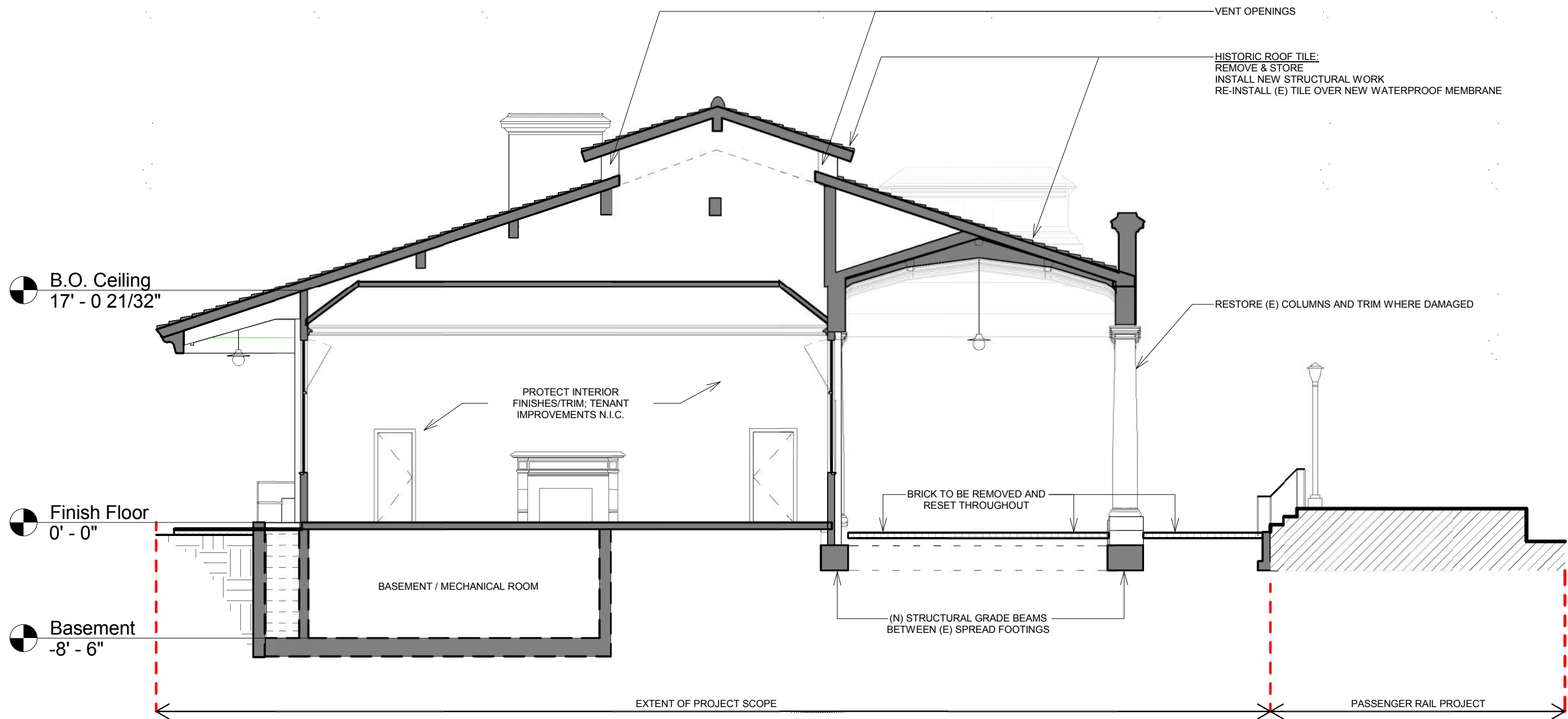
P12





# South Building Elevation





# Section through Building

