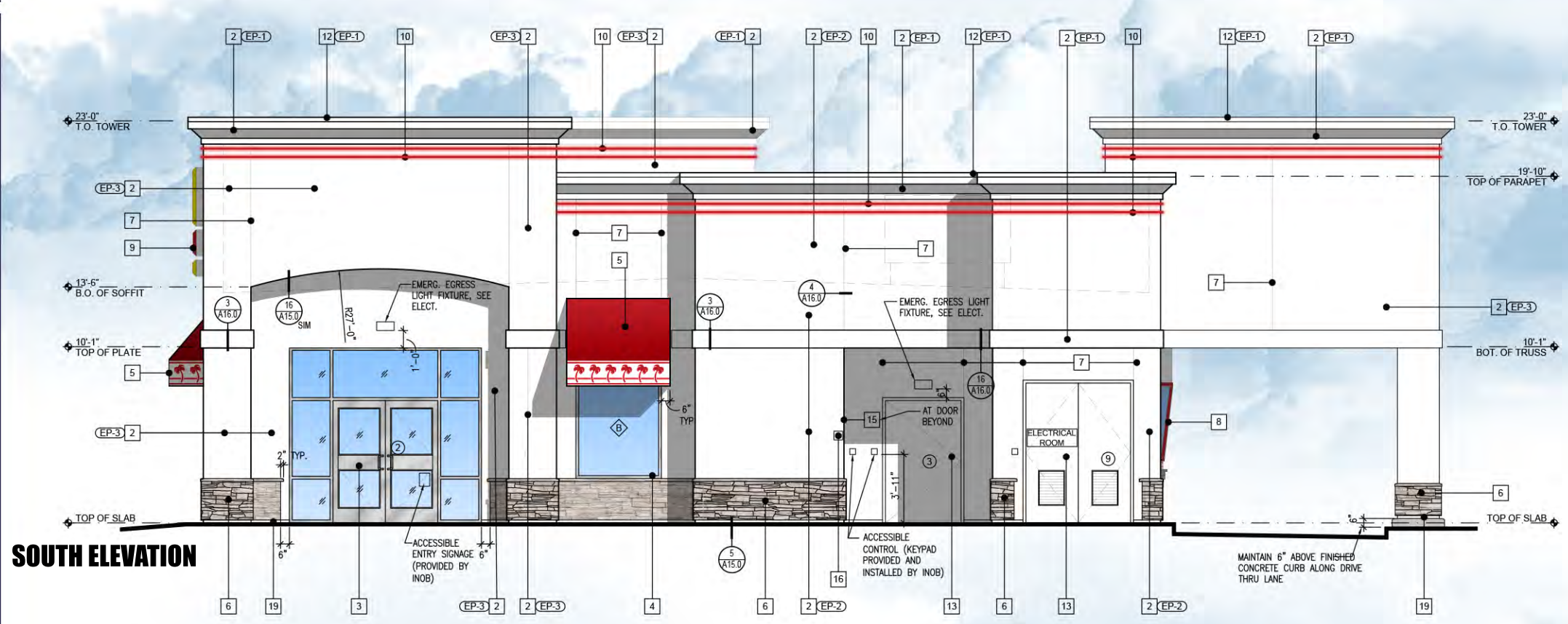
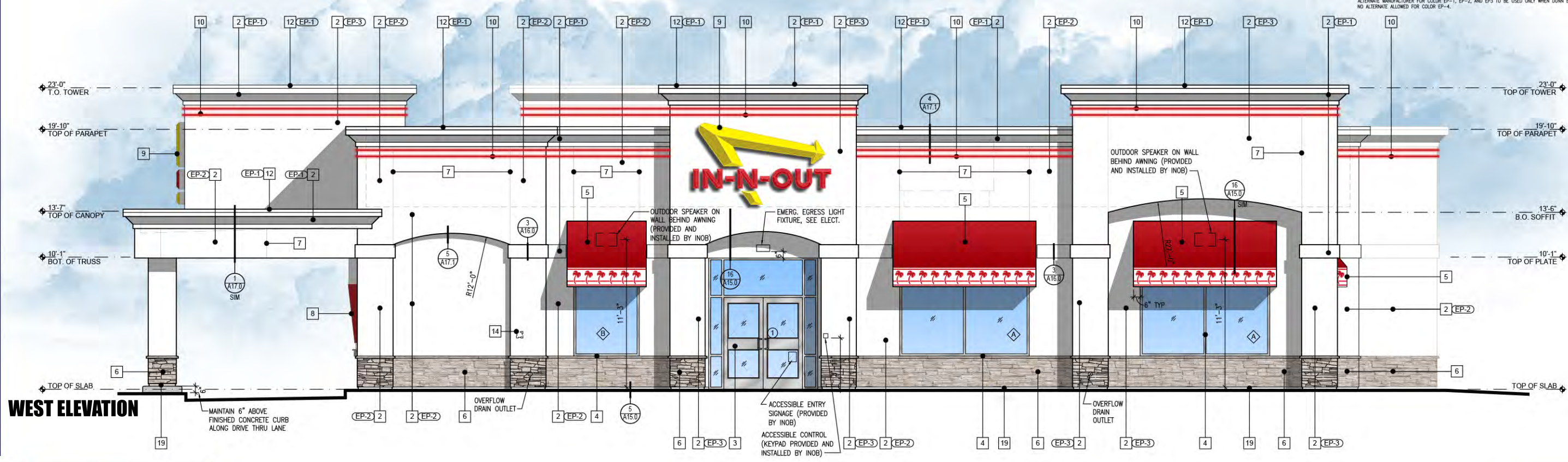


SOUTH ELEVATION



WEST ELEVATION



KEY NOTES

- NOT USED
- STUCCO: 2030 FINE SAND FLOAT FINISH, NOT SPRAYED, WITH WHITE INTEGRAL COLOR COAT.
- ALUMINUM STOREFRONT DOORS: CLEAR ANODIZED ALUMINUM.
- ALUMINUM WINDOWS: CLEAR ANODIZED ALUMINUM.
- AWNINGS: PVC COATED WICK-RESISTANT ERADICABLE POLYESTER AWNINGS WITH CUSTOM PALM TREE ERADICATED TO WHITE COLOR BY COOLEY BRITE CUSTOM RED 79-1124A. FLAME RETARDANT PER UL-48, UL-94, NFPA 701. PROVIDE FLUORESCENT BACKLIGHTING. SEE: 5A16.0 & 6A16.0.
- STONE VENEER - WHITE PRO LEDGE BY CORONADO STONE WITH MATCHING CORONADO STONE WAINSCOT CAP. APPLY PER MFR RECOMMENDATIONS. DRY STACK.
- 1/4" WIDE METAL PENN SCREED: SEE DETAIL 4A16.0. ALIGN CONTROL JOINTS ON DRIVE-THRU CANOPY FASCIA WITH CONTROL JOINTS ON BOTTOM OF SOFFIT.
- SLOPED ALUMINUM WINDOWS: U.S. ALUMINUM S-910. GLASS JOINTS TO HAVE POLISHED EDGES WITH SILICONE JOINTS. REDWOOD FRAMES TO BE PRIMED WITH AXALTA IMRON IND 9P01 - PRIMER CAN BE TINTED GRAY. FINISH COAT TO BE AXALTA IMRON IND 9T01 TINTED CUSTOM COLOR EP-4.
- IN-N-OUT BURGER ILLUMINATED LOGO SIGN: UNDER SEPARATE PERMIT.
- I.E.D. DOUBLE BAND LIGHTING: UNDER SEPARATE PERMIT.
- INTERNALLY ILLUMINATED BUILDING ADDRESS NUMBERS TO BE 12" HIGH, 6" MIN. W/ MIN. STROKE WIDTH OF 0.5 INCH PER FIRE DEPARTMENT AND CITY JURISDICTION ADDRESS DISPLAY REQUIREMENTS:
 - ADDRESS SHALL BE DISPLAYED & VISIBLE FROM BOTH STREET DIRECTIONS OF APPROACHING VEHICLES
 - PERMANENT NUMBERS AND LETTERS SHALL BE MADE OF DURABLE AND CLEARLY VISIBLE MATERIAL SUCH AS WOOD, METAL, CERAMIC, PLASTIC AND VINYL. (PAINTED OR GLOUED ON NUMBERS ARE NOT ACCEPTABLE MATERIALS)
 - NUMBERS SHALL BE OF COLORS CONTRASTING WITH BACKGROUND TO WHICH THEY ARE ATTACHED.
 - NUMBERS SHALL BE A MINIMUM PROPORTION RATIO OF 8:1 (HEIGHT TO WIDTH).
 - NUMBERS CANNOT BE SPELLED.
 - METAL CAP: COLOR TO MATCH CORNICE.
- HOLLOW METAL DOOR: SEE SHEET A11.0. HM DOORS AND JAMBS SHALL HAVE POWDER COAT FINISH AS FOLLOWS: INTERIOR DOORS: TIGER DRYLAC - SMOOTH, HIGH GLOSS FINISH - 'BENGAL WHITE'. EXTERIOR DOORS: CARDINAL - GLOSS, SMOOTH FINISH - 'BONE CHINA' OR TO MATCH EXTERIOR STUCCO PAINT COLOR - (VERIFY ELEVATIONS- EP-1). WHERE FIELD PAINTING DOORS AND JAMBS IS NECESSARY AND NOT RECOMMENDED, THE ALTERNATE WOULD BE TO USE AXALTA IMRON IND 9P01 WHITE PRIMER. FINISH COAT TO BE AXALTA IMRON IND 9T01 GLOSS WHITE. EXTERIOR HM DOORS & JAMBS- USE SAME PRODUCT TINTED TO MATCH EXTERIOR BUILDING PAINT COLOR EP-1. NOTE- TRASH ENCLOSURE METAL DOORS AND POSTS TO BE FIELD PAINTED USING AXALTA IMRON AS DESCRIBED ABOVE.
- 6'-0" HIGH STUB OUT FOR C62 LINE.
- 4" MIN. HIGH WHITE LETTERING 'RISER ROOM' ON RED BACKGROUND SIGN. MOUNT ON RISER ROOM DOOR
- RECESSED KNOX BOX AT 5'-0" HIGH TO THE RIGHT OF FIRE RISER ROOM. SEE DETAIL 10A17.0
- RECESSED LED DOWN LIGHT IN SOFFIT. SEE DETAIL 9A17.1
- NOT USED
- TEXTURE EXPOSED FOUNDATION WALL BELOW WEEP SCREED AND PAINT TO MATCH WALL.

EXTERIOR PAINT SCHEDULE

NO.	MFR.	MODEL	COLOR #	COLOR NAME	FINISH	REMARKS
EP-1	DUNN EDWARDS	ARISTOSHIELD 70	DEW 339	BONE CHINA	HIGH GLOSS	PRIME W/ D.E. ULTRA-GRIP PREMIUM PRIMER
ALT	SHERWIN WILLIAMS	SUPER PAINT LATEX	A84W01151	IN-N-OUT BONE CHINA	HIGH GLOSS	STUCCO: PRIME W/ LOXON CONCRETE & EXT LATEX PRIMER WHITE. ADMW8300 GALV METAL PRIME W/ GALVITE HS ACRYLIC COATING - B50W2030, OFF WHITE
EP-2	DUNN EDWARDS	ARISTOSHIELD 70	DEW 339	BONE CHINA	HIGH GLOSS	PRIME W/ D.E. ULTRA-GRIP PREMIUM PRIMER
ALT	SHERWIN WILLIAMS	SUPER PAINT LATEX	A84W01151	IN-N-OUT BONE CHINA	HIGH GLOSS	SEE REMARKS FOR EP-1 ALT MFR.
EP-3	DUNN EDWARDS	ARISTOSHIELD 70	DEW 339	BONE CHINA	HIGH GLOSS	PRIME W/ D.E. ULTRA-GRIP PREMIUM PRIMER
ALT	SHERWIN WILLIAMS	SUPER PAINT LATEX	A84W01151	IN-N-OUT BONE CHINA	HIGH GLOSS	SEE REMARKS FOR EP-1 ALT MFR.
EP-4	AXALTA	IMRON	SEE REMARKS FOR COLOR FORMULA	NO RED	HIGH GLOSS	PRIMER: AXALTA IMRON IND 9P01. PRIMER CAN BE TINTED GRAY FINISH COAT: AXALTA IMRON IND 9T01 GLOSS POLYURETHANE COLOR FORMULA: NON-CJM GUIDE 23020 MIX SIZE: 102.40Z (GALLON) 9T04 VIOLET 321.2 9T10 RED-ORANGE 346.3 9T13 ORANGE 257.6

ALTERNATE MANUFACTURER FOR COLOR EP-1, EP-2, AND EP3 TO BE USED ONLY WHEN DUNN EDWARDS IS NOT AVAILABLE. NO ALTERNATE ALLOWED FOR COLOR EP-4.

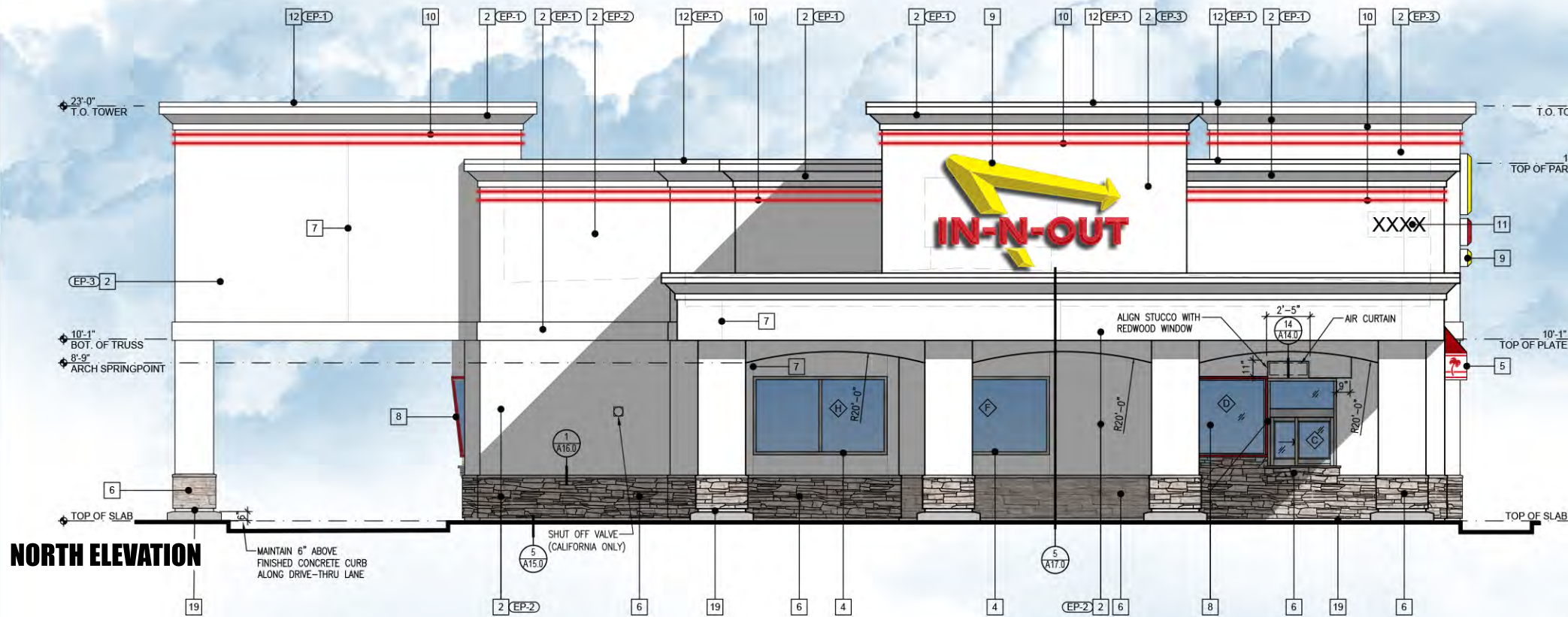


Colored Elevations
 IN-N-OUT BURGER
 Redlands, CA

DATE: 04-27-22
 SCALE: 1/8" = 1'-0"
 0 8

GHA Architecture / Development
 14901 Quorum Drive, Suite 300
 Dallas, Texas 75254 972.239.8884





NORTH ELEVATION

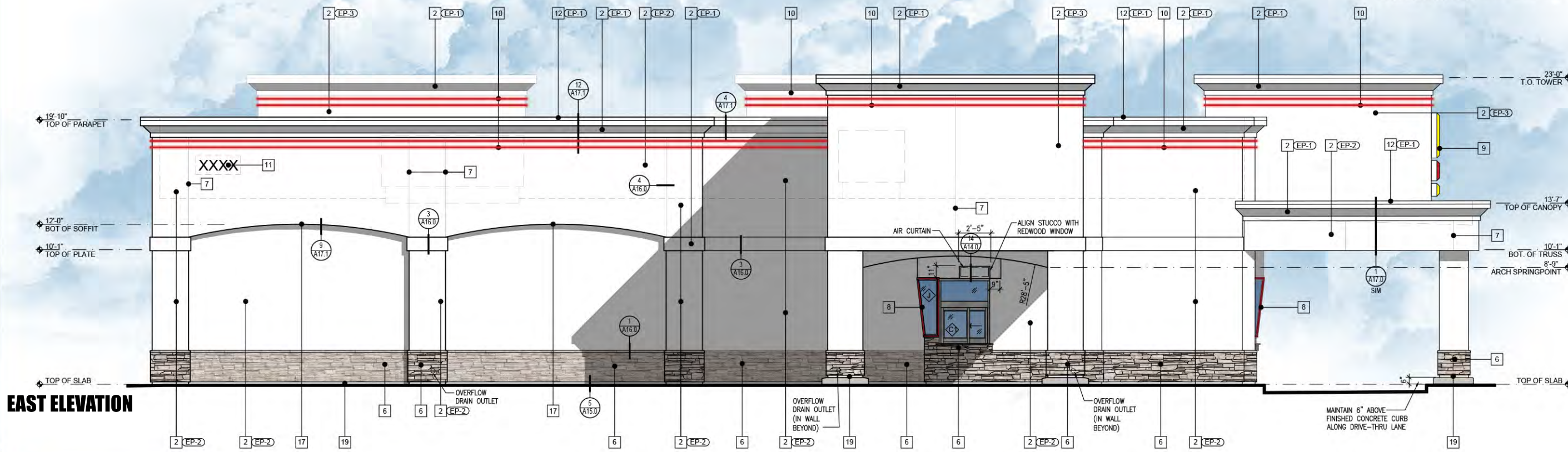
KEY NOTES

- NOT USED
- STUCCO: 2030 FINE SAND FLOAT FINISH, NOT SPRAYED, WITH WHITE INTEGRAL COLOR COAT.
- ALUMINUM STOREFRONT DOORS: CLEAR ANODIZED ALUMINUM.
- ALUMINUM WINDOWS: CLEAR ANODIZED ALUMINUM.
- AWNINGS: PVC COATED WICK-RESISTANT ERADICABLE POLYESTER AWNINGS WITH CUSTOM PALM TREE ERADICATED TO WHITE COLOR BY COOLEY BRITE CUSTOM RED 79-1124A. FLAME RETARDANT PER UL-48, UL-94, NFPA 701. PROVIDE FLUORESCENT BACKLIGHTING. SEE: SA11.5 & 616.0.
- STONE VENEER - WHITE PRO LEDGE BY CORONADO STONE WITH MATCHING CORONADO STONE WAINSCOT CAP. APPLY PER MFR RECOMMENDATIONS. DRY STACK.
- 1/4" WIDE METAL PENN SCREED: SEE DETAIL 41416.0. ALIGN CONTROL JOINTS ON DRIVE-THRU CANOPY FASCIA WITH CONTROL JOINTS ON BOTTOM OF SOFFIT.
- SLOPED ALUMINUM WINDOWS: U.S. ALUMINUM S-610. GLASS JOINTS TO HAVE POLISHED EDGES WITH SILICONE JOINTS. REDWOOD FRAMES TO BE PRIMED WITH AXALTA IMRON IND 9P01 - PRIMER CAN BE TINTED GRAY. FINISH COAT TO BE AXALTA IMRON IND 9T01 TINTED CUSTOM COLOR EP-4.
- IN-N-OUT BURGER ILLUMINATED LOGO SIGN: UNDER SEPARATE PERMIT.
- I.E.D. DOUBLE BAND LIGHTING: UNDER SEPARATE PERMIT.
- INTERNALLY ILLUMINATED BUILDING ADDRESS NUMBERS TO BE 12" HIGH, 6" MIN. W/ MIN. STROKE WIDTH OF 0.5 INCH PER FIRE DEPARTMENT AND CITY JURISDICTION ADDRESS DISPLAY REQUIREMENTS:
1. ADDRESS SHALL BE DISPLAYED & VISIBLE FROM BOTH STREET DIRECTIONS OF APPROACHING VEHICLES.
2. PERMANENT NUMBERS AND LETTERS SHALL BE MADE OF DURABLE AND CLEARLY VISIBLE MATERIAL SUCH AS WOOD, METAL, CERAMIC, PLASTIC AND VINYL. (PAINTED OR GLOUED ON NUMBERS ARE NOT ACCEPTABLE MATERIALS).
3. NUMBERS SHALL BE OF COLORS CONTRASTING WITH BACKGROUND TO WHICH THEY ARE ATTACHED.
4. NUMBERS SHALL BE A MINIMUM PROPORTION RATIO OF 8:1 (HEIGHT TO WIDTH).
METAL CAP: COLOR TO MATCH CORNICE.
- HOLLOW METAL DOOR: SEE SHEET A11.0. HM DOORS AND JAMBS SHALL HAVE POWDER COAT FINISH AS FOLLOWS: INTERIOR DOORS: TIGER DRYLAC - SMOOTH, HIGH GLOSS FINISH - 'BENGAL WHITE'. EXTERIOR DOORS: CARDINAL - GLOSS, SMOOTH FINISH - 'BONE CHINA' OR TO MATCH EXTERIOR STUCCO PAINT COLOR - (VERIFY ELEVATIONS- EP-1). WHERE FIELD PAINTING DOORS AND JAMBS IS NECESSARY NOT RECOMMENDED. THE ALTERNATE WOULD BE TO USE AXALTA IMRON IND 9P01 WHITE PRIMER. FINISH COAT TO BE AXALTA IMRON IND 9T01 GLOSS WHITE. EXTERIOR HM DOORS & JAMBS: USE SAME PRODUCT TINTED TO MATCH EXTERIOR BUILDING PAINT COLOR EP-1. NOTE: TRASH ENCLOSURE METAL DOORS AND POSTS TO BE FIELD PAINTED USING AXALTA IMRON AS DESCRIBED ABOVE.
- 6'-0" HIGH STUB OUT FOR C62 LINE.
- 4" MIN. HIGH WHITE LETTERING 'RISER ROOM' ON RED BACKGROUND SIGN. MOUNT ON RISER ROOM DOOR
- RECESSED KNOX BOX AT 5'-0" HIGH TO THE RIGHT OF FIRE RISER ROOM. SEE DETAIL 10A17.0
- RECESSED LED DOWN LIGHT IN SOFFIT. SEE DETAIL 9A17.1
- NOT USED
- TEXTURE EXPOSED FOUNDATION WALL BELOW WEEP SCREED AND PAINT TO MATCH WALL.

EXTERIOR PAINT SCHEDULE

NO.	MFR.	MODEL	COLOR #	COLOR NAME	FINISH	REMARKS
EP-1	DUNN EDWARDS	ARISTOSHIELD 70	DEW 339	BONE CHINA	HIGH GLOSS	PRIME W/ D.E. ULTRA-GRIP PREMIUM PRIMER
ALT.	SHERWIN WILLIAMS	SUPER PAINT LATEX	A84W0151	IN-N-OUT BONE CHINA	HIGH GLOSS	STUCCO: PRIME W/ LOXON CONCRETE & EXT LATEX PRIMER WHITE - ADMW830E GALV METAL: PRIME W/ GALVITE HS ACRYLIC COATING - B50WZ030, OFF WHITE
EP-2	DUNN EDWARDS	ARISTOSHIELD 70	DEW 339	BONE CHINA	HIGH GLOSS	PRIME W/ D.E. ULTRA-GRIP PREMIUM PRIMER
ALT.	SHERWIN WILLIAMS	SUPER PAINT LATEX	A84W0151	IN-N-OUT BONE CHINA	HIGH GLOSS	SEE REMARKS FOR EP-1 ALT MFR.
EP-3	DUNN EDWARDS	ARISTOSHIELD 70	DEW 339	BONE CHINA	HIGH GLOSS	PRIME W/ D.E. ULTRA-GRIP PREMIUM PRIMER
ALT.	SHERWIN WILLIAMS	SUPER PAINT LATEX	A84W0151	IN-N-OUT BONE CHINA	HIGH GLOSS	SEE REMARKS FOR EP-1 ALT MFR.
EP-4	AXALTA	IMRON	SEE REMARKS FOR COLOR FORMULA	NO RED	HIGH GLOSS	PRIMER: AXALTA IMRON IND 9P01. PRIMER CAN BE TINTED GRAY FINISH COAT: AXALTA IMRON IND 9T01 GLOSS POLYURETHANE COLOR FORMULA: NON-CJM GUIDE 23020 MX SIZE: 102.40Z (GALLON) 9T04 VIOLET 321.2 9T10 RED-ORANGE 346.3 9T13 ORANGE 257.8

ALTERNATE MANUFACTURER FOR COLOR EP-1, EP-2, AND EP3 TO BE USED ONLY WHEN DUNN EDWARDS IS NOT AVAILABLE. NO ALTERNATE ALLOWED FOR COLOR EP-4.



EAST ELEVATION



Colored Elevations
IN-N-OUT BURGER
Redlands, CA

DATE: 04-27-22
SCALE: 1/8" = 1'-0"
0 8

GHA Architecture / Development
14901 Quorum Drive, Suite 300
Dallas, Texas 75254 972.239.8884





EP-1, EP-2, EP-3

DUNN EDWARDS
DEW339
"BONE CHINA WHITE"



EP-4

DUNN EDWARDS
ASHL70
"INO RED"



MATERIAL 5

AWNING WITH PVC COATED
WICK RESISTANT ERADICABLE
POLYESTER AND IN-N-OUT
CUSTOM COLORS



MATERIAL 6

CORONADO
PRO LEDGE
"WHITE"



"GOD BLESS AMERICA"
13502 HAMBURGER LANE
BALDWIN PARK, CA 91706

COLOR AND MATERIALS

SWC LUGONIA & 210 FWY
REDLANDS, CA

ISSUED: 06/14/22