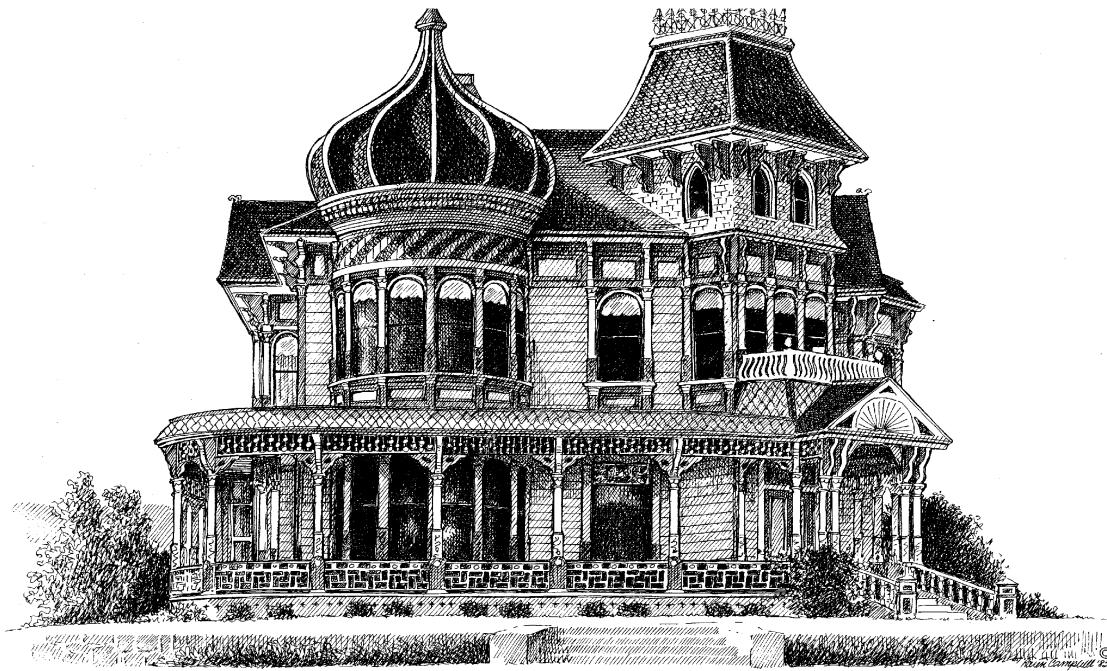




**CITY OF REDLANDS
DEVELOPMENT SERVICES DEPARTMENT
LIST OF DESIGNATED HISTORIC RESOURCES
AS OF NOVEMBER 2, 2023**



**Morey Mansion
Historic Landmark No. 22
190 Terracina Boulevard**

City of Redlands

List of Historic Resources as of November 2, 2023

City Council

Eddie Tejada, Mayor

Paul T. Barich, Mayor Pro Tem

Denise Davis, Councilmember

Jenna Guzman-Lowery, Councilmember

Mario Saucedo, Councilmember

Historic & Scenic Preservation Commission

Kurt Heidelberg, M.A., M.S., Chair

Steven Holm, M.A., Vice Chair

Lauren Weiss Bricker, Ph.D., Commissioner

Nathan Gonzales, Ph.D., Commissioner

Justine Guidry, Commissioner

Rose-Marie Raumin, Ph.D., Commissioner

Greg Weissman, Commissioner

For information about historic preservation in the City of Redlands,
please contact Planning staff at (909) 798 – 7555 option 2.

Introduction

The City of Redlands became a Certified Local Government (CLG) on April 11, 2016, in cooperation with the State Office of Historic Preservation and the National Park Service.

Additional information about the City's historic preservation program is available online at <https://www.cityofredlands.org/post/historic-preservation>, including:

- Historic Context Statement
- Historic Resources Design Manual
- Historic Architectural Design Guidelines (*draft – not yet adopted*)
- Secretary of the Interior's Standards for the Treatment of Historic Properties

The City's Historic and Scenic Preservation Ordinance is contained in [Chapter 2.24](#) and [Chapter 2.62](#) of the Redlands Municipal Code. The ordinance specifies the responsibilities and duties of the city's Historic & Scenic Preservation Commission as well as the Development Services Director and the Historic Preservation Officer.

Please note that most types of alterations, changes, or additions to 1) locally-designated Historic Resources or 2) properties located within a locally-designated Historic District often will require a permit known as a "Certificate of Appropriateness" to be approved **prior to** issuance of any related building permits or commencing any construction or alterations. Additional information about permit requirements is provided on the City's webpage at <https://www.cityofredlands.org/post/historic-preservation>.

The regulations and guidelines can be complicated depending on the complexity of any given proposal to modify a historic resource. Information about permit types, historic design guidelines, and other documents are provided online for your convenience and to ensure full transparency regarding what you can expect during the design review process.

All property owners, contractors, and potential applicants are encouraged to contact Planning Division staff at (909) 798 – 7551 extension 3 or send an email to planning@cityofredlands.org if you have any questions about permits, or to discuss your ideas about possible alterations or projects.

City of Redlands

DESIGNATED HISTORIC RESOURCES AS OF NOVEMBER 2, 2023

217	Alvarado Street	SPHD, HD8
224	Alvarado Street	SPHD, HD8
225	Alvarado Street	SPHD, HD8
226	Alvarado Street	SPHD, HD8
229	Alvarado Street	SPHD, HD8
232	Alvarado Street	SPHD, HD8
235	Alvarado Street	SPHD, HD8
238	Alvarado Street	SPHD, HD8
243 - 245	Alvarado Street	SPHD, HD8
246 - 248	Alvarado Street	SPHD, HD8
244	Alvarado Street	SPHD, HD8
249	Alvarado Street	SPHD, HD8
256	Alvarado Street	SPHD, HD8
257	Alvarado Street	SPHD, HD8
302	Alvarado Street	SPHD, HD8
305	Alvarado Street	SPHD, HD8
308	Alvarado Street	SPHD, HD8
309	Alvarado Street	SPHD, HD8
315	Alvarado Street	SPHD, HD8
316	Alvarado Street	SPHD, HD8
317	Alvarado Street	SPHD, HD8
321	Alvarado Street	SPHD, HD8
322	Alvarado Street	SPHD, HD8
327	Alvarado Street	SPHD, HD8
328	Alvarado Street	SPHD, HD8
329	Alvarado Street	HD8
331	Alvarado Street	HD8
334	Alvarado Street	HD8
342	Alvarado Street	HD8
346	Alvarado Street	HD8
349	Alvarado Street	HD8
350	Alvarado Street	HD8

KEY

CITY OF DESIGNATED RESOURCES

HL# = Historic Landmark with City Number
 HR# = Historic Resource with City Number
 N = Nominated Resource

HD1 = Eureka Street Historic District
 HD2 = West Highland Avenue Historic and Scenic District
 HD3 = Early Redlands Historic and Scenic District
 HD4 = Normandie Court Historic District
 HD5 = East Fern Avenue Historic and Scenic District
 HD6 = Garden Hill Historic and Scenic District
 HD7 = LaVerne Street Historic and Scenic District
 HD8 = Smiley Park Neighborhood Historic and Scenic District

FEDERAL AND STATE DESIGNATIONS

SPHD = Smiley Park Historic District SFDD = Santa Fe Depot District
 NR = National Register

City of Redlands

DESIGNATED HISTORIC RESOURCES AS OF NOVEMBER 2, 2023

503	Alvarado Street	HD8
505 - 507	Alvarado Street	SPHD
508	Alvarado Street	SPHD
511	Alvarado Street	SPHD
515	Alvarado Street	SPHD
516	Alvarado Street	SPHD
519	Alvarado Street	SPHD
521	Alvarado Street	SPHD
523	Alvarado Street	SPHD
525	Alvarado Street	SPHD
526	Alvarado Street	SPHD
538	Alvarado Street	SPHD
540	Alvarado Street	SPHD
602	Alvarado Street	SPHD
610	Alvarado Street	SPHD
614	Alvarado Street	SPHD
618	Alvarado Street	SPHD
619	Alvarado Street	SPHD
624	Alvarado Street	SPHD
625	Alvarado Street	SPHD
627	Alvarado Street	SPHD
632	Alvarado Street	SPHD
171	Bellevue Avenue, Cunningham House	HR95
3	Bow B Road, Ralph Vining Residence	HR1
201	Brookside, U.S. Post Office - Redlands Main	NR
302 - 308	Brookside Avenue, William Batty Bldg.	HR81
303 - 307	Brookside Avenue, Pure Gold	HR52
503	Brookside Avenue, Gordon Nelson Home	HR101
529	Brookside Avenue, King Residence	HR55
404	Brookside Avenue, Ray H. Church House	HR65
407	Brookside Avenue, Lederer House	HR72
408	Brookside Avenue	HR125

KEY

CITY OF DESIGNATED RESOURCES

HL# = Historic Landmark with City Number
 HR# = Historic Resource with City Number
 N = Nominated Resource

HD1 = Eureka Street Historic District
 HD2 = West Highland Avenue Historic and Scenic District
 HD3 = Early Redlands Historic and Scenic District
 HD4 = Normandie Court Historic District
 HD5 = East Fern Avenue Historic and Scenic District
 HD6 = Garden Hill Historic and Scenic District
 HD7 = LaVerne Street Historic and Scenic District
 HD8 = Smiley Park Neighborhood Historic and Scenic District

FEDERAL AND STATE DESIGNATIONS

SPHD = Smiley Park Historic District SFDD = Santa Fe Depot District
 NR = National Register

City of Redlands

DESIGNATED HISTORIC RESOURCES AS OF NOVEMBER 2, 2023

420	Brookside Avenue, Sturtevant House	HR74
201	Brookside Avenue, US Post Office	NR, HD8
102	Buena Vista Street, South	SPHD, HD8
103	Buena Vista Street, South	SPHD, HD8
107	Buena Vista Street, South	SPHD, HD8
108	Buena Vista Street, South	SPHD, HD8
113	Buena Vista Street, South	SPHD, HD8
114	Buena Vista Street, South	SPHD, HD8
118 - 122	Buena Vista Street, South	SPHD, HD8
119	Buena Vista Street, South	SPHD, HD8
121	Buena Vista Street, South	SPHD, HD8
124	Buena Vista Street, South	SPHD, HD8
126	Buena Vista Street, South	SPHD, HD8
127 - 129	Buena Vista Street, South	SPHD, HD8
128	Buena Vista Street, South	SPHD, HD8
133	Buena Vista Street, South	SPHD, HD8
137	Buena Vista Street, South	SPHD, HD8
140	Buena Vista Street, South	HD8
142	Buena Vista Street, South	SPHD, HD8
143 - 145	Buena Vista Street, South	SPHD, HD8
220	Buena Vista Street, South	SPHD
221	Buena Vista Street, South	SPHD
222	Buena Vista Street, South, Austin House	SPHD, HR48
224	Buena Vista Street, South	SPHD
225	Buena Vista Street, South	SPHD
226	Buena Vista Street, South	SPHD
230	Buena Vista Street, South	SPHD
231	Buena Vista Street, South	SPHD
239	Buena Vista Street, South	SPHD
243	Buena Vista Street, South	SPHD
249	Buena Vista Street, South	SPHD
250	Buena Vista Street, South	SPHD

KEY

CITY OF DESIGNATED RESOURCES

HL# = Historic Landmark with City Number
 HR# = Historic Resource with City Number
 N = Nominated Resource

HD1 = Eureka Street Historic District
 HD2 = West Highland Avenue Historic and Scenic District
 HD3 = Early Redlands Historic and Scenic District
 HD4 = Normandie Court Historic District
 HD5 = East Fern Avenue Historic and Scenic District
 HD6 = Garden Hill Historic and Scenic District
 HD7 = LaVerne Street Historic and Scenic District
 HD8 = Smiley Park Neighborhood Historic and Scenic District

FEDERAL AND STATE DESIGNATIONS

SPHD = Smiley Park Historic District SFDD = Santa Fe Depot District
 NR = National Register

City of Redlands

DESIGNATED HISTORIC RESOURCES AS OF NOVEMBER 2, 2023

255	Buena Vista Street, South	SPHD
256	Buena Vista Street, South	SPHD
304	Buena Vista Street, South	SPHD
305	Buena Vista Street, South	SPHD
307	Buena Vista Street, South	SPHD
311	Buena Vista Street, South	SPHD
314	Buena Vista Street, South	SPHD
319	Buena Vista Street, South	SPHD
320	Buena Vista Street, South	SPHD
324	Buena Vista Street, South	SPHD
325	Buena Vista Street, South	SPHD
330	Buena Vista Street, South	SPHD
332 - 338	Buena Vista Street, South	SPHD
703	Buena Vista Street, South, Thayer House	HR69
30	Cajon Street	HD8
101 - 127	Cajon Street, Fox Theater Building	HL35
131	Cajon Street, Redlands Masonic Lodge	HR137
201	Cajon Street, YWCA Bldg. (formerly 16 E. Olive Ave.)	HR109
248	Cajon Street	HD8
254 - 256	Cajon Street	SPHD, HD8
325	Cajon Street, A.T. Campbell House	HR91
403	Cajon Street	HD3
411	Cajon Street	HD3
415	Cajon Street	HD3
419	Cajon Street	HD3
425	Cajon Street	HD3
429	Cajon Street	HD3
440	Cajon Street	HD3
441	Cajon Street	HD3
451	Cajon Street	HD3
452	Cajon Street	HD3
453	Cajon Street	HD3

KEY

CITY OF DESIGNATED RESOURCES

HL# = Historic Landmark with City Number
 HR# = Historic Resource with City Number
 N = Nominated Resource

HD1 = Eureka Street Historic District
 HD2 = West Highland Avenue Historic and Scenic District
 HD3 = Early Redlands Historic and Scenic District
 HD4 = Normandie Court Historic District
 HD5 = East Fern Avenue Historic and Scenic District
 HD6 = Garden Hill Historic and Scenic District
 HD7 = LaVerne Street Historic and Scenic District
 HD8 = Smiley Park Neighborhood Historic and Scenic District

FEDERAL AND STATE DESIGNATIONS

SPHD = Smiley Park Historic District SFDD = Santa Fe Depot District
 NR = National Register

City of Redlands

DESIGNATED HISTORIC RESOURCES AS OF NOVEMBER 2, 2023

501	Cajon Street	SPHD, HD3
502	Cajon Street	SPHD, HD3
503	Cajon Street	SPHD, HD3
508	Cajon Street	SPHD, HD3
511	Cajon Street	SPHD, HD3
516	Cajon Street	HD3
519	Cajon Street	SPHD, HD3
522	Cajon Street	HD3
523 - 525	Cajon Street	HD3
529	Cajon Street	SPHD, HD3
532	Cajon Street	SPHD, HD3
537	Cajon Street	SPHD, HD3
538	Cajon Street	SPHD, HD3
544	Cajon Street	SPHD, HD3
552 - 556	Cajon Street	HD3
560	Cajon Street	HD3
243	Cajon Street, Barrow House	HR61
351	Cajon Street, Stolz House	HR2
454	Cajon Street, Washburn House	SPHD, HD3, HR24
1605	Calvary Circle	HR135
1740	Canyon Road	HR113
236	Center Street, South, Drake House	HR28
656	Center Street, South, Miller House	HR58
1004	Center Street, South, Hammett House	HR51
446	Chestnut Avenue, Daniel Shepard House	HR3
634	Chestnut Avenue	HR133
721	Chestnut Avenue, W.E Grigsby House	HR120
5	Citrus Avenue, East, Academy of Music Bldg.	NR, HL57
746	Citrus Street, East Trolley Car Barn	NR, HL27
212	Clark Street, West	SPHD, HD8
216	Clark Street, West	SPHD, HD8
222	Clark Street, West	SPHD, HD8

KEY

CITY OF DESIGNATED RESOURCES

HL# = Historic Landmark with City Number
 HR# = Historic Resource with City Number
 N = Nominated Resource

HD1 = Eureka Street Historic District
 HD2 = West Highland Avenue Historic and Scenic District
 HD3 = Early Redlands Historic and Scenic District
 HD4 = Normandie Court Historic District
 HD5 = East Fern Avenue Historic and Scenic District
 HD6 = Garden Hill Historic and Scenic District
 HD7 = LaVerne Street Historic and Scenic District
 HD8 = Smiley Park Neighborhood Historic and Scenic District

FEDERAL AND STATE DESIGNATIONS

SPHD = Smiley Park Historic District SFDD = Santa Fe Depot District
 NR = National Register

City of Redlands

DESIGNATED HISTORIC RESOURCES AS OF NOVEMBER 2, 2023

416	Clark Street, West	SPHD
514	Clark Street, West	SPHD
619	Clark Street, West	HD4
621	Clark Street, West	HD4
1049	Clifton Avenue, West, Alfred E. Lee Home	HR127
1145	Clifton Avenue, William P. Greiner Shrine Children's Home	HL103
1155	Clifton Avenue, William P. Greiner Shrine Children's Home	HL103
818	Colton, Avenue, East, Kuhn House	HR54
1200	Colton, Avenue, East, U of R Memorial Chapel	HL100
314	Colton Avenue, West	HR110
620	Colton Avenue, West, Reasoner Residence	HR83
1115	Crescent Avenue, West, La Casada	HR4
1205	Crescent Avenue, West, Burrage Mansion	N (nominated)
221	Cypress Avenue, East, Andrew Dyke Res.	HR6
18	Cypress Avenue, West	HD3
28	Cypress Avenue, West	HD3
104	Cypress Avenue, West	HD3
202	Cypress Avenue, West	SPHD
210	Cypress Avenue, West	SPHD
214	Cypress Avenue, West	SPHD
217	Cypress Avenue, West	SPHD
220	Cypress Avenue, West	SPHD
325	Cypress Avenue, West	SPHD
329	Cypress Avenue, West	SPHD
330	Cypress Avenue, West	SPHD
671	Cypress Avenue, West, Holsten-Fairchild Home	HR102
931	Cypress Avenue, West	HR5
124	Eleventh Street, Joseph E. Brown House	HR63
18	Eureka Street, South	HD8
24	Eureka Street, South	SPHD, HD8

KEY

CITY OF DESIGNATED RESOURCES

HL# = Historic Landmark with City Number
 HR# = Historic Resource with City Number
 N = Nominated Resource

HD1 = Eureka Street Historic District
 HD2 = West Highland Avenue Historic and Scenic District
 HD3 = Early Redlands Historic and Scenic District
 HD4 = Normandie Court Historic District
 HD5 = East Fern Avenue Historic and Scenic District
 HD6 = Garden Hill Historic and Scenic District
 HD7 = LaVerne Street Historic and Scenic District
 HD8 = Smiley Park Neighborhood Historic and Scenic District

FEDERAL AND STATE DESIGNATIONS

SPHD = Smiley Park Historic District SFDD = Santa Fe Depot District
 NR = National Register

City of Redlands

DESIGNATED HISTORIC RESOURCES AS OF NOVEMBER 2, 2023

28	Eureka Street, South	SPHD, HD8
32 - 34	Eureka Street, South	SPHD
36	Eureka Street, South	SPHD
38	Eureka Street, South	SPHD
44	Eureka Street, South	SPHD, HD8
168	Eureka Street, South, Sanford House	SPHD, HR94
172	Eureka Street, South	SPHD
173	Eureka Street, South	HD8
179	Eureka Street, South	HD8
180	Eureka Street, South	SPHD
183	Eureka Street, South	SPHD, HD8
184	Eureka Street, South	SPHD, HD8
185	Eureka Street, South	SPHD, HD8
188	Eureka Street, South	SPHD, HD8
212	Eureka Street, South	SPHD
222	Eureka Street, South	HD8
226	Eureka Street, South	SPHD, HD1, HR8, HR8
230	Eureka Street, South	SPHD, HD1, HD8, HR9
234	Eureka Street, South	SPHD, HD1, HD8, HR10
238	Eureka Street, South	SPHD, HD1, HD8, HR11
244	Eureka Street, South	SPHD, HD1, HD8, HR12
248	Eureka Street, South	SPHD, HD8
255	Eureka Street, South	SPHD, HD8
256 - 258	Eureka Street, South	SPHD, HD8
301	Eureka Street, South	SPHD, HD8
304	Eureka Street, South	SPHD, HD8
305	Eureka Street, South	SPHD, HD8
310 - 314	Eureka Street, South	SPHD, HD8
311	Eureka Street, South	SPHD, HD8
317	Eureka Street, South	SPHD, HD8
318	Eureka Street, South	SPHD, HD8
321	Eureka Street, South	SPHD, HD8

KEY

CITY OF DESIGNATED RESOURCES

HL# = Historic Landmark with City Number
 HR# = Historic Resource with City Number
 N = Nominated Resource

HD1 = Eureka Street Historic District
 HD2 = West Highland Avenue Historic and Scenic District
 HD3 = Early Redlands Historic and Scenic District
 HD4 = Normandie Court Historic District
 HD5 = East Fern Avenue Historic and Scenic District
 HD6 = Garden Hill Historic and Scenic District
 HD7 = LaVerne Street Historic and Scenic District
 HD8 = Smiley Park Neighborhood Historic and Scenic District

FEDERAL AND STATE DESIGNATIONS

SPHD = Smiley Park Historic District SFDD = Santa Fe Depot District
 NR = National Register

City of Redlands

DESIGNATED HISTORIC RESOURCES AS OF NOVEMBER 2, 2023

324	Eureka Street, South	SPHD, HD8
325	Eureka Street, South	SPHD, HD8
328	Eureka Street, South	SPHD, HD8
331 - 331.5	Eureka Street, South	SPHD, HD8
332	Eureka Street, South, McIntosh House	SPHD, HD8
335	Eureka Street, South	SPHD, HD8
337	Eureka Street, South	SPHD, HD8
338	Eureka Street, South	SPHD, HD8
344	Eureka Street, South	SPHD, HD8
350 - 356	Eureka Street, South	SPHD, HD8, HR66
417	Eureka Street, South	SPHD, HD8
420	Eureka Street, South	SPHD, HD8
424 - 426	Eureka Street, South	SPHD, HD8
425	Eureka Street, South	SPHD, HD8
429	Eureka Street, South	SPHD, HD8
430	Eureka Street, South	SPHD, HD8
433	Eureka Street, South	SPHD, HD8
434	Eureka Street, South	SPHD, HD8
437	Eureka Street, South	SPHD, HD8
439	Eureka Street, South	SPHD, HD8
440	Eureka Street, South	SPHD, HD8
444	Eureka Street, South	SPHD, HD8
448	Eureka Street, South	SPHD, HD8
449	Eureka Street, South	SPHD, HD8
455	Eureka Street, South	SPHD, HD8
456	Eureka Street, South	SPHD, HD8
502	Eureka Street, South	SPHD, HD8
503	Eureka Street, South	SPHD, HD8
506 - 508	Eureka Street, South	SPHD
507	Eureka Street, South	SPHD
510	Eureka Street, South	SPHD
511	Eureka Street, South	SPHD

KEY

CITY OF DESIGNATED RESOURCES

HL# = Historic Landmark with City Number
 HR# = Historic Resource with City Number
 N = Nominated Resource

HD1 = Eureka Street Historic District
 HD2 = West Highland Avenue Historic and Scenic District
 HD3 = Early Redlands Historic and Scenic District
 HD4 = Normandie Court Historic District
 HD5 = East Fern Avenue Historic and Scenic District
 HD6 = Garden Hill Historic and Scenic District
 HD7 = LaVerne Street Historic and Scenic District
 HD8 = Smiley Park Neighborhood Historic and Scenic District

FEDERAL AND STATE DESIGNATIONS

SPHD = Smiley Park Historic District SFDD = Santa Fe Depot District
 NR = National Register

City of Redlands

DESIGNATED HISTORIC RESOURCES AS OF NOVEMBER 2, 2023

514	Eureka Street, South	SPHD
515	Eureka Street, South	SPHD
516	Eureka Street, South	SPHD
519	Eureka Street, South	SPHD
521	Eureka Street, South	SPHD
522	Eureka Street, South	SPHD
9 - 17	Fern Avenue, East	HD5
21	Fern Avenue, East, Browning House	HD5, HR46
25	Fern Avenue, East	HD5
104	Fern Avenue, East	HD5
106	Fern Avenue, East	HD5
107	Fern Avenue, East	HD5
109	Fern Avenue, East	HD5
112	Fern Avenue, East	HD5
118	Fern Avenue, East	HD5
120	Fern Avenue, East	HD5
121	Fern Avenue, East	HD5
123	Fern Avenue, East	HD5
126	Fern Avenue, East	HD5
129	Fern Avenue, East	HD5
201	Fern Avenue, East	HD5
202	Fern Avenue, East	HD5
209	Fern Avenue, East	HD5
210	Fern Avenue, East	HD5
215	Fern Avenue, East	HD5
216	Fern Avenue, East	HD5
217	Fern Avenue, East	HD5
224	Fern Avenue, East	HD5
225	Fern Avenue, East	HD5
230	Fern Avenue, East	HD5
301	Fern Avenue, East	HD5
304	Fern Avenue, East	HD5

KEY

CITY OF DESIGNATED RESOURCES

HL# = Historic Landmark with City Number
 HR# = Historic Resource with City Number
 N = Nominated Resource

HD1 = Eureka Street Historic District
 HD2 = West Highland Avenue Historic and Scenic District
 HD3 = Early Redlands Historic and Scenic District
 HD4 = Normandie Court Historic District
 HD5 = East Fern Avenue Historic and Scenic District
 HD6 = Garden Hill Historic and Scenic District
 HD7 = LaVerne Street Historic and Scenic District
 HD8 = Smiley Park Neighborhood Historic and Scenic District

FEDERAL AND STATE DESIGNATIONS

SPHD = Smiley Park Historic District SFDD = Santa Fe Depot District
 NR = National Register

City of Redlands

DESIGNATED HISTORIC RESOURCES AS OF NOVEMBER 2, 2023

309	Fern Avenue, East	HD5
311	Fern Avenue, East	HD5
315	Fern Avenue, East	HD5
316	Fern Avenue, East	HD5
420	Fern Avenue, East	HD5
430	Fern Avenue, East	HD5
24	Fern Avenue, West	HD3
28	Fern Avenue, West, Trinity Episcopal Church	SPHD, HD3
101	Fern Avenue, West	SPHD, HD3
108	Fern Avenue, West	SPHD, HD8
109	Fern Avenue, West	SPHD, HD8
115	Fern Avenue, West	SPHD, HD8
116	Fern Avenue, West	SPHD, HD8
118	Fern Avenue, West	SPHD, HD8
119	Fern Avenue, West	SPHD, HD8
121	Fern Avenue, West	SPHD, HD8
124	Fern Avenue, West	SPHD, HD8
201	Fern Avenue, West	SPHD, HD8
202	Fern Avenue, West	SPHD, HD8
205	Fern Avenue, West	SPHD, HD8
211	Fern Avenue, West	SPHD, HD8
217	Fern Avenue, West	SPHD, HD8
218	Fern Avenue, West	SPHD, HD8
223	Fern Avenue, West	SPHD, HD8
227	Fern Avenue, West	SPHD, HD8
228	Fern Avenue, West	SPHD, HD8
301	Fern Avenue, West	SPHD, HD8
302	Fern Avenue, West	SPHD, HD8
305	Fern Avenue, West	SPHD, HD8
308	Fern Avenue, West	SPHD, HD8
314	Fern Avenue, West	SPHD, HD8
316	Fern Avenue, West	SPHD, HD8

KEY

CITY OF DESIGNATED RESOURCES

HL# = Historic Landmark with City Number
 HR# = Historic Resource with City Number
 N = Nominated Resource

HD1 = Eureka Street Historic District
 HD2 = West Highland Avenue Historic and Scenic District
 HD3 = Early Redlands Historic and Scenic District
 HD4 = Normandie Court Historic District
 HD5 = East Fern Avenue Historic and Scenic District
 HD6 = Garden Hill Historic and Scenic District
 HD7 = LaVerne Street Historic and Scenic District
 HD8 = Smiley Park Neighborhood Historic and Scenic District

FEDERAL AND STATE DESIGNATIONS

SPHD = Smiley Park Historic District SFDD = Santa Fe Depot District
 NR = National Register

City of Redlands

DESIGNATED HISTORIC RESOURCES AS OF NOVEMBER 2, 2023

326	Fern Avenue, West	HD8
412 - 414	Fern Avenue, West	HD8
416	Fern Avenue, West	HD8
420	Fern Avenue, West	HD8
424	Fern Avenue, West	HD8
428	Fern Avenue, West	HD8
501 – 501½	Fern Avenue, West	SPHD
635	Fern Avenue, West, Hardy House	HR30
923	Fern Avenue, West	NR
1670	Fifth Avenue, Throop House	HR32
215	Fifth Street North, Hall of Justice	SFDD
345	Fifth Street, North, Haight Packing House/Mitten Display	SFDD, HL36
215	Fifth Street, North-rear, H. Jacobson's Warehouse	SFDD
47	First Street, William Risch House	HR129
330	Fourth Street, North, Mutual Orange Distributors (MOD) Packing House (see also 330 North Third St.)	SFDD, HR132
148	Fourth Street, South	SPHD, HD8
152	Fourth Street, South	SPHD, HD8
154	Fourth Street, South	SPHD, HD8
237	Fourth Street, South	HD8
243 - 247	Fourth Street, South	HD8
251	Fourth Street, South	SPHD, HD8
254	Fourth Street, South	HD8
255	Fourth Street, South	SPHD, HD8
302	Fourth Street, South	SPHD, HD8
303	Fourth Street, South	SPHD, HD8
309	Fourth Street, South	SPHD, HD8
310	Fourth Street, South	SPHD, HD8
315	Fourth Street, South	SPHD, HD8
316	Fourth Street, South	SPHD, HD8
322	Fourth Street, South	SPHD, HD8

KEY

CITY OF DESIGNATED RESOURCES

HL# = Historic Landmark with City Number
 HR# = Historic Resource with City Number
 N = Nominated Resource

HD1 = Eureka Street Historic District
 HD2 = West Highland Avenue Historic and Scenic District
 HD3 = Early Redlands Historic and Scenic District
 HD4 = Normandie Court Historic District
 HD5 = East Fern Avenue Historic and Scenic District
 HD6 = Garden Hill Historic and Scenic District
 HD7 = LaVerne Street Historic and Scenic District
 HD8 = Smiley Park Neighborhood Historic and Scenic District

FEDERAL AND STATE DESIGNATIONS

SPHD = Smiley Park Historic District SFDD = Santa Fe Depot District
 NR = National Register

City of Redlands

DESIGNATED HISTORIC RESOURCES AS OF NOVEMBER 2, 2023

326	Fourth Street, South	SPHD, HD8
330	Fourth Street, South	SPHD, HD8
336	Fourth Street, South	SPHD, HD8
342	Fourth Street, South	SPHD, HD8
346	Fourth Street, South	SPHD, HD8
419	Fourth Street, South, Trinity Episcopal Church	SPHD, HD3
420	Fourth Street, South	SPHD, HD3
424 - 426	Fourth Street, South	SPHD, HD3
432	Fourth Street, South	SPHD, HD3
439	Fourth Street, South	SPHD, HD3
443	Fourth Street, South	SPHD, HD3
444	Fourth Street, South	SPHD, HD3
445	Fourth Street, South	SPHD, HD3
446	Fourth Street, South	SPHD, HD3
451	Fourth Street, South	SPHD, HD3
454	Fourth Street, South	SPHD, HD3
457	Fourth Street, South	SPHD, HD3
502	Fourth Street, South	SPHD, HD3
505	Fourth Street, South, The Wheeler House	SPHD, HD3, HR97
509	Fourth Street, South	SPHD, HD3
510	Fourth Street, South	SPHD, HD3
516	Fourth Street, South	SPHD, HD3
517	Fourth Street, South	SPHD, HD3
521	Fourth Street, South	SPHD, HD3
522	Fourth Street, South	SPHD, HD3
527	Fourth Street, South, Wade House	SPHD, HD3, HR56
528	Fourth Street, South	SPHD, HD3
534	Fourth Street, South	SPHD, HD3
535	Fourth Street, South	SPHD, HD3
541	Fourth Street, South	SPHD, HD3
542	Fourth Street, South	SPHD, HD3
544	Fourth Street, South	SPHD, HD3

KEY

CITY OF DESIGNATED RESOURCES

HL# = Historic Landmark with City Number
 HR# = Historic Resource with City Number
 N = Nominated Resource

HD1 = Eureka Street Historic District
 HD2 = West Highland Avenue Historic and Scenic District
 HD3 = Early Redlands Historic and Scenic District
 HD4 = Normandie Court Historic District
 HD5 = East Fern Avenue Historic and Scenic District
 HD6 = Garden Hill Historic and Scenic District
 HD7 = LaVerne Street Historic and Scenic District
 HD8 = Smiley Park Neighborhood Historic and Scenic District

FEDERAL AND STATE DESIGNATIONS

SPHD = Smiley Park Historic District SFDD = Santa Fe Depot District
 NR = National Register

City of Redlands

DESIGNATED HISTORIC RESOURCES AS OF NOVEMBER 2, 2023

545	Fourth Street, South	HD3
548	Fourth Street, South	SPHD, HD3
554	Fourth Street, South	HD3
555	Fourth Street, South	HD3
1621	Garden Street, Robert J. Dunn House	HR122, NR
91	Garden Hill Drive	HD6
95	Garden Hill Drive	HD6
103	Garden Hill Drive	HD6
104	Garden Hill Drive	HD6
105	Garden Hill Drive	HD6
107	Garden Hill Drive	HD6
110	Garden Hill Drive	HD6
116	Garden Hill Drive	HD6
123	Garden Hill Drive	HD6
127	Garden Hill Drive	HD6
131	Garden Hill Drive	HD6
401 - 407	Glenwood Drive	SPHD
5	Grant Street	SPHD, HD8
7	Grant Street	SPHD, HD8
7.5	Grant Street	SPHD, HD8
9	Grant Street	SPHD, HD8
11	Grant Street	SPHD
12	Grant Street	HD8
13	Grant Street	SPHD, HD8
14	Grant Street	HD8
15	Grant Street	HD8
16	Grant Street	HD8
18	Grant Street	HD8
20	Grant Street	HD8
21	Grant Street	HD8
22	Grant Street	HD8
24	Grant Street	SPHD, HD8

KEY

CITY OF DESIGNATED RESOURCES

HL# = Historic Landmark with City Number
 HR# = Historic Resource with City Number
 N = Nominated Resource

HD1 = Eureka Street Historic District
 HD2 = West Highland Avenue Historic and Scenic District
 HD3 = Early Redlands Historic and Scenic District
 HD4 = Normandie Court Historic District
 HD5 = East Fern Avenue Historic and Scenic District
 HD6 = Garden Hill Historic and Scenic District
 HD7 = LaVerne Street Historic and Scenic District
 HD8 = Smiley Park Neighborhood Historic and Scenic District

FEDERAL AND STATE DESIGNATIONS

SPHD = Smiley Park Historic District SFDD = Santa Fe Depot District
 NR = National Register

City of Redlands

DESIGNATED HISTORIC RESOURCES AS OF NOVEMBER 2, 2023

126	Grant Street	SPHD
128	Grant Street	SPHD
129	Grant Street	SPHD, HD8
130	Grant Street	SPHD, HD8
132	Grant Street	SPHD, HD8
133	Grant Street	SPHD, HD8
134	Grant Street	SPHD, HD8
135	Grant Street	SPHD, HD8
136	Grant Street	SPHD, HD8
137	Grant Street	SPHD, HD8
218	Grant Street	SPHD, HD8
219	Grant Street	SPHD, HD8
220	Grant Street	SPHD, HD8
222	Grant Street	SPHD, HD8
225	Grant Street	SPHD, HD8
228	Grant Street	SPHD, HD8
231	Grant Street	SPHD, HD8
233	Grant Street	SPHD, HD8
234	Grant Street	SPHD, HD8
236	Grant Street	SPHD, HD8
239	Grant Street	SPHD, HD8
245	Grant Street	SPHD
246	Grant Street	SPHD, HD8
247	Grant Street	SPHD
250	Grant Street	SPHD, HD8
254	Grant Street	SPHD, HD8
301	Grant Street	SPHD, HD8
307 - 309	Grant Street	SPHD
308	Grant Street	SPHD, HD8
314	Grant Street	SPHD, HD8
315	Grant Street	SPHD, HD8
316 - 318	Grant Street	SPHD

KEY

CITY OF DESIGNATED RESOURCES

HL# = Historic Landmark with City Number
 HR# = Historic Resource with City Number
 N = Nominated Resource

HD1 = Eureka Street Historic District
 HD2 = West Highland Avenue Historic and Scenic District
 HD3 = Early Redlands Historic and Scenic District
 HD4 = Normandie Court Historic District
 HD5 = East Fern Avenue Historic and Scenic District
 HD6 = Garden Hill Historic and Scenic District
 HD7 = LaVerne Street Historic and Scenic District
 HD8 = Smiley Park Neighborhood Historic and Scenic District

FEDERAL AND STATE DESIGNATIONS

SPHD = Smiley Park Historic District SFDD = Santa Fe Depot District
 NR = National Register

City of Redlands

DESIGNATED HISTORIC RESOURCES AS OF NOVEMBER 2, 2023

319	Grant Street	SPHD, HD8
320	Grant Street	SPHD, HD8
322	Grant Street	HD8
323	Grant Street	SPHD, HD8
327	Grant Street	SPHD, HD8
333	Grant Street	SPHD, HD8
334	Grant Street	HD8
337	Grant Street	SPHD, HD8
338	Grant Street	SPHD, HD8
343	Grant Street	SPHD, HD8
344	Grant Street	HD8
351	Grant Street	SPHD, HD8
417	Grant Street	SPHD, HD8
420	Grant Street	SPHD, HD8
424	Grant Street	SPHD, HD8
425	Grant Street	SPHD, HD8
429	Grant Street	SPHD, HD8
430	Grant Street	SPHD, HD8
433	Grant Street	SPHD, HD8
434	Grant Street	SPHD, HD8
437	Grant Street	SPHD, HD8
440	Grant Street	SPHD, HD8
444	Grant Street	SPHD, HD8
447	Grant Street	SPHD, HD8
450	Grant Street	SPHD, HD8
451	Grant Street	SPHD, HD8
455	Grant Street	SPHD, HD8
456	Grant Street	SPHD, HD8
510 - 512	Grant Street	SPHD
809	High Avenue, East Boettger House	HR92
816	High Avenue, East, I.N. Hoag House	HR13
16	Highland Avenue, West	HD2

KEY

CITY OF DESIGNATED RESOURCES

HL# = Historic Landmark with City Number
 HR# = Historic Resource with City Number
 N = Nominated Resource

HD1 = Eureka Street Historic District
 HD2 = West Highland Avenue Historic and Scenic District
 HD3 = Early Redlands Historic and Scenic District
 HD4 = Normandie Court Historic District
 HD5 = East Fern Avenue Historic and Scenic District
 HD6 = Garden Hill Historic and Scenic District
 HD7 = LaVerne Street Historic and Scenic District
 HD8 = Smiley Park Neighborhood Historic and Scenic District

FEDERAL AND STATE DESIGNATIONS

SPHD = Smiley Park Historic District SFDD = Santa Fe Depot District
 NR = National Register

City of Redlands

DESIGNATED HISTORIC RESOURCES AS OF NOVEMBER 2, 2023

28	Highland Avenue, West	HD2
160	Highland Avenue, West	HD2
178	Highland Avenue, West	HD2
220	Highland Avenue, West	HD2
250	Highland Avenue, West	HD2
280	Highland Avenue, West	HD2
380	Highland Avenue, West	HD2
404	Highland Avenue, West	HD2
405	Highland Avenue, West	HD2
409	Highland Avenue, West	HD2
415	Highland Avenue, West	HD2
425	Highland Avenue, West	HD2
430	Highland Avenue, West	HD2
431	Highland Avenue, West	HD2
435	Highland Avenue, West	HD2
440	Highland Avenue, West	HD2
460	Highland Avenue, West	HD2
503	Highland Avenue, West	HD2
516	Highland Avenue, West	HD2
531	Highland Avenue, West	HD2
634	Highland Avenue, West, Wissahickon Inn	HD2
635	Highland Avenue, West	HD2
653	Highland Avenue, West	HD2
654	Highland Avenue, West, Curtis Wells House ("Grey Gables")	HD2
704	Highland Avenue, West	HD2
705	Highland Avenue, West	HD2
722	Highland Avenue, West	HD2
731	Highland Avenue, West	HD2
834	Highland Avenue, West, Myra Lee Cottage	HD2, HR15
844	Highland Avenue, West	HD2
851	Highland Avenue, West	HD2

KEY

CITY OF DESIGNATED RESOURCES

HL# = Historic Landmark with City Number
 HR# = Historic Resource with City Number
 N = Nominated Resource

HD1 = Eureka Street Historic District
 HD2 = West Highland Avenue Historic and Scenic District
 HD3 = Early Redlands Historic and Scenic District
 HD4 = Normandie Court Historic District
 HD5 = East Fern Avenue Historic and Scenic District
 HD6 = Garden Hill Historic and Scenic District
 HD7 = LaVerne Street Historic and Scenic District
 HD8 = Smiley Park Neighborhood Historic and Scenic District

FEDERAL AND STATE DESIGNATIONS

SPHD = Smiley Park Historic District SFDD = Santa Fe Depot District
 NR = National Register

City of Redlands

DESIGNATED HISTORIC RESOURCES AS OF NOVEMBER 2, 2023

854	Highland Avenue, West	HD2
905	Highland Avenue, West	HD2
914	Highland Avenue, West	HD2
915	Highland Avenue, West	HD2
925	Highland Avenue, West	HD2
928	Highland Avenue, West	HD2
942	Highland Avenue, West	HD2
954	Highland Avenue, West	HD2
1007	Highland Avenue, West	HD2
1012	Highland Avenue, West	HD2
1020	Highland Avenue, West	HD2
1021	Highland Avenue, West	HD2
1026	Highland Avenue, West	HD2
1026	Highland Avenue, West	HD2
1032	Highland Avenue, West	HD2
1033	Highland Avenue, West	HD2
1038	Highland Avenue, West	HD2
1039	Highland Avenue, West	HD2
1044	Highland Avenue, West	HD2
1045	Highland Avenue, West	HD2
1050	Highland Avenue, West	HD2
1055	Highland Avenue, West	HD2
1058	Highland Avenue, West	HD2
1105	Highland Avenue, West	HD2
1106	Highland Avenue, West	HD2
1108	Highland Avenue, West	HD2
1109	Highland Avenue, West	HD2
1120	Highland Avenue, West	HD2
1121	Highland Avenue, West	HD2
1130	Highland Avenue, West	HD2
1140	Highland Avenue, West	HD2
1143 - 1145	Highland Avenue, West	HD2

KEY

CITY OF DESIGNATED RESOURCES

HL# = Historic Landmark with City Number
 HR# = Historic Resource with City Number
 N = Nominated Resource

HD1 = Eureka Street Historic District
 HD2 = West Highland Avenue Historic and Scenic District
 HD3 = Early Redlands Historic and Scenic District
 HD4 = Normandie Court Historic District
 HD5 = East Fern Avenue Historic and Scenic District
 HD6 = Garden Hill Historic and Scenic District
 HD7 = LaVerne Street Historic and Scenic District
 HD8 = Smiley Park Neighborhood Historic and Scenic District

FEDERAL AND STATE DESIGNATIONS

SPHD = Smiley Park Historic District SFDD = Santa Fe Depot District
 NR = National Register

City of Redlands

DESIGNATED HISTORIC RESOURCES AS OF NOVEMBER 2, 2023

1154	Highland Avenue, West - wall and structure	HD2, HR23
1165	Highland Avenue, West	HD2
1205	Highland Avenue, West, Hammer House	HD2, HR47
1205	Highland Avenue, West	HD2
1210	Highland Avenue, West	HD2
1211	Highland Avenue, West	HD2
1216	Highland Avenue, West	HD2
1217	Highland Avenue, West	HD2
	Hillside Memorial Cemetery	HR16
15	Home Place, East	HD3
14	Home Place, West	SPHD, HD3
20	Home Place, West	SPHD, HD3
215	Home Place, West	SPHD, HD8
219	Home Place, West	SPHD, HD8
221	Home Place, West	SPHD, HD8
223	Home Place, West	HD8
90	LaSalle Street, F.A.C. Mitchell Home	HR17
407	La Verne Street	HD7
417	La Verne Street	HD7
421	La Verne Street	HD7
424	La Verne Street	HD7
429	La Verne Street	HD7
430	La Verne Street	HD7
434	La Verne Street	HD7
435	La Verne Street	HD7
439	La Verne Street	HD7
443	La Verne Street	HD7
444	La Verne Street	HD7
447	La Verne Street	HD7
448	La Verne Street	HD7
451	La Verne Street	HD7
454	La Verne Street	HD7

KEY

CITY OF DESIGNATED RESOURCES

HL# = Historic Landmark with City Number
 HR# = Historic Resource with City Number
 N = Nominated Resource

HD1 = Eureka Street Historic District
 HD2 = West Highland Avenue Historic and Scenic District
 HD3 = Early Redlands Historic and Scenic District
 HD4 = Normandie Court Historic District
 HD5 = East Fern Avenue Historic and Scenic District
 HD6 = Garden Hill Historic and Scenic District
 HD7 = LaVerne Street Historic and Scenic District
 HD8 = Smiley Park Neighborhood Historic and Scenic District

FEDERAL AND STATE DESIGNATIONS

SPHD = Smiley Park Historic District SFDD = Santa Fe Depot District
 NR = National Register

City of Redlands

DESIGNATED HISTORIC RESOURCES AS OF NOVEMBER 2, 2023

612	Lawton Street, House of Neighborly Service	HR67
649	Los Altos Drive, Herz Residence	HR119
102	Lugonia Avenue, West, Herbert Home	HR18
301	Lugonia Avenue, West, JR Crane House	HR 134
221	Michigan Street	SPHD
225	Michigan Street	SPHD
229	Michigan Street	SPHD
233	Michigan Street, South, Theron Hayward Home	SPHD, HR123
241	Michigan Street	SPHD
253-255	Michigan Street	SPHD
	Mill Creek Zanja (East Weir Box North of 3055 Mill Creek Road to just west of Division Street at Sylvan Blvd.)	NR
305	Myrtle Street, Hesser House	HR64
12 - 44	Nevada Street, Barton House (formerly 11245 Nevada)	HL86, NR
11245	Nevada Street	NR
220	Nordina Street, Kemble House	HR87
303	Normandie Court	HD4
304	Normandie Court	HD4
307	Normandie Court	HD4
308	Normandie Court	HD4
311	Normandie Court	HD4
312	Normandie Court	HD4
315	Normandie Court	HD4
316	Normandie Court	HD4
319	Normandie Court	HD4
320	Normandie Court	HD4
321	Normandie Court	HD4
324	Normandie Court	HD4
327	Normandie Court	HD4
328	Normandie Court	HD4
331 - 333	Normandie Court	HD4

KEY

CITY OF DESIGNATED RESOURCES

HL# = Historic Landmark with City Number
 HR# = Historic Resource with City Number
 N = Nominated Resource

HD1 = Eureka Street Historic District
 HD2 = West Highland Avenue Historic and Scenic District
 HD3 = Early Redlands Historic and Scenic District
 HD4 = Normandie Court Historic District
 HD5 = East Fern Avenue Historic and Scenic District
 HD6 = Garden Hill Historic and Scenic District
 HD7 = LaVerne Street Historic and Scenic District
 HD8 = Smiley Park Neighborhood Historic and Scenic District

FEDERAL AND STATE DESIGNATIONS

SPHD = Smiley Park Historic District SFDD = Santa Fe Depot District
 NR = National Register

City of Redlands

DESIGNATED HISTORIC RESOURCES AS OF NOVEMBER 2, 2023

332 - 334	Normandie Court	HD4
124	Olive Avenue, East, C.L. Bowman House	HR84
204	Olive Avenue, East, Keener Home	HR98
214	Olive Avenue, East, Wilmouth House	HR26
255	Olive Avenue, East, Heritage Hall	HR117
104	Olive Avenue, West	SPHD, HD8
108	Olive Avenue, West	SPHD, HD8
112	Olive Avenue, West, R.J. Dunn House	SPHD, HD8, HR76
120	Olive Avenue, West	HD8
126	Olive Avenue, West, F.C. Laney House	SPHD, HD8, HR77
16	Olive Avenue, East YWCA Bldg. (also 201 Cajon)	HR109
203	Olive Avenue, West, Charles A. Wood House	SPHD, HR78, HD8
206	Olive Avenue, West	SPHD, HD8
208	Olive Avenue, West	SPHD, HD8
211	Olive Avenue, West	SPHD, HD8
214	Olive Avenue, West	SPHD, HD8
215	Olive Avenue, West	SPHD, HD8
218	Olive Avenue, West	SPHD, HD8
219	Olive Avenue, West	SPHD, HD8
223	Olive Avenue, West	SPHD, HD8
224	Olive Avenue, West	SPHD, HD8
232	Olive Avenue, West	SPHD, HD8
304	Olive Avenue, West	SPHD, HD8
305	Olive Avenue, West	SPHD, HD8
310	Olive Avenue, West	SPHD, HD8
311	Olive Avenue, West	SPHD, HD8
314	Olive Avenue, West	SPHD, HD8
317	Olive Avenue, West	SPHD, HD8
320	Olive Avenue, West	SPHD, HD8
324	Olive Avenue, West, Albert G. Simonds House	SPHD, HD8, HR80
325	Olive Avenue, West	SPHD, HD8
405	Olive Avenue, West, Holt House	SPHD, HD8

KEY

CITY OF DESIGNATED RESOURCES

HL# = Historic Landmark with City Number
 HR# = Historic Resource with City Number
 N = Nominated Resource

HD1 = Eureka Street Historic District
 HD2 = West Highland Avenue Historic and Scenic District
 HD3 = Early Redlands Historic and Scenic District
 HD4 = Normandie Court Historic District
 HD5 = East Fern Avenue Historic and Scenic District
 HD6 = Garden Hill Historic and Scenic District
 HD7 = LaVerne Street Historic and Scenic District
 HD8 = Smiley Park Neighborhood Historic and Scenic District

FEDERAL AND STATE DESIGNATIONS

SPHD = Smiley Park Historic District SFDD = Santa Fe Depot District
 NR = National Register

City of Redlands

DESIGNATED HISTORIC RESOURCES AS OF NOVEMBER 2, 2023

408- 414	Olive Avenue, West	SPHD, HD8
409	Olive Avenue, West	SPHD
416	Olive Avenue, West	SPHD, HD8
424	Olive Avenue, West	SPHD, HD8
425	Olive Avenue, West	SPHD
426	Olive Avenue, West	SPHD, HD8
432	Olive Avenue, West	SPHD, HD8
433 – 433½	Olive Avenue, West, Wm. M & Mary Johnson Home	SPHD, HR126
501	Olive Avenue, West	SPHD
504	Olive Avenue, West	SPHD, HD8
505	Olive Avenue, West	HD8
509	Olive Avenue, West	SPHD
510	Olive Avenue, West	SPHD, HD8
511	Olive Avenue, West	SPHD
518	Olive Avenue, West	SPHD
519	Olive Avenue, West	SPHD
527	Olive Avenue, West	SPHD
701	Olive Avenue, West, Merriman House	HR53
1125	Olive Avenue, West, McAlister House	HR29
1240	Olive Avenue, West, A.E. Taylor Home	HR116
14	Orange Street	HR
206	Orange Street, Hamilton Block	SFDD
208	Orange Street, Levine's	SFDD
216 - 218	Orange Street, Gregg Block	SFDD
220	Orange Street, Phinney Block	SFDD, HL34
328	Orange Street, E.J. Martin Home and Nursery	SFDD
330 - 332	Orange Street, Hamilton Block/Carlson Hardware	SFDD
336	Orange Street, Beacon Printery	SFDD
337	Orange Street, Board of Trade/Chamber of Commerce	SFDD
338 - 340	Orange Street, Worley Bldg.	SFDD
342 - 344	Orange Street, Poundstone & Hamilton Building	SFDD, HL37

KEY

CITY OF DESIGNATED RESOURCES

HL# = Historic Landmark with City Number
 HR# = Historic Resource with City Number
 N = Nominated Resource

HD1 = Eureka Street Historic District
 HD2 = West Highland Avenue Historic and Scenic District
 HD3 = Early Redlands Historic and Scenic District
 HD4 = Normandie Court Historic District
 HD5 = East Fern Avenue Historic and Scenic District
 HD6 = Garden Hill Historic and Scenic District
 HD7 = LaVerne Street Historic and Scenic District
 HD8 = Smiley Park Neighborhood Historic and Scenic District

FEDERAL AND STATE DESIGNATIONS

SPHD = Smiley Park Historic District SFDD = Santa Fe Depot District
 NR = National Register

City of Redlands

DESIGNATED HISTORIC RESOURCES AS OF NOVEMBER 2, 2023

346	Orange Street, Palace Livery Stable	SFDD
347	Orange Street, Old Chamber of Commerce	HL 40
348	Orange Street, Pioneer Transfer	SFDD
349 - 351	Orange Street, Santa Fe Railroad Station	SFDD, HL38
360	Orange Street, Redlands City Transfer/Lite House	SFDD
415	Orange Street, Packard Motor Co. Sales Office	SFDD
526 - 528	Orange Street, Deming Building	HR41
928	Orange Street, Major David Shaw House	HR75
1101	Orange Street, C.C. McCarty House	HR82
1153	Orange Street, North, Marten Andersen House (formerly 831 6th Street)	HR105
1157	Orange Street, North, Jerome Seymour House	HR 107
202 - 208	Oriental Avenue, Chinatown Laundries	SFDD
440	Oriental Ave, City Transfer & Storage Co. Warehouse	HR 134, NR
155	Palm Avenue, West, Miss Hester Leaverton House	HR99
159	Palm Avenue, West, Montgomery House	HR88
405	Palm Avenue, West, Thomas Jeffrey House	HR25
1122	Palm Avenue, West, Palmateo House	HR70
7	Parkwood Drive	HD8
8 - 10	Parkwood Drive	HD8
11 - 15	Parkwood Drive	HD8
14	Parkwood Drive	HD8
16 - 18	Parkwood Drive	HD8
17 - 19	Parkwood Drive	HD8
21	Parkwood Drive	HD8
24	Parkwood Drive	HD8
25 - 37 - 39	Parkwood Drive	HD8
32	Parkwood Drive	HD8
36	Parkwood Drive	HD8
41 - 43	Parkwood Drive	HD8
100	Parkwood Drive	SPHD, HD8
114	Parkwood Drive	SPHD, HD8

KEY

CITY OF DESIGNATED RESOURCES

HL# = Historic Landmark with City Number
 HR# = Historic Resource with City Number
 N = Nominated Resource

HD1 = Eureka Street Historic District
 HD2 = West Highland Avenue Historic and Scenic District
 HD3 = Early Redlands Historic and Scenic District
 HD4 = Normandie Court Historic District
 HD5 = East Fern Avenue Historic and Scenic District
 HD6 = Garden Hill Historic and Scenic District
 HD7 = LaVerne Street Historic and Scenic District
 HD8 = Smiley Park Neighborhood Historic and Scenic District

FEDERAL AND STATE DESIGNATIONS

SPHD = Smiley Park Historic District SFDD = Santa Fe Depot District
 NR = National Register

City of Redlands

DESIGNATED HISTORIC RESOURCES AS OF NOVEMBER 2, 2023

116	Parkwood Drive	SPHD, HD8
118	Parkwood Drive	SPHD, HD8
124	Parkwood Drive	SPHD, HD8
128	Parkwood Drive	SPHD, HD8
134	Parkwood Drive	SPHD, HD8
138	Parkwood Drive	SPHD, HD8
144	Parkwood Drive	SPHD, HD8
1041	Pioneer Avenue, East, Soffel House	HR85
1325	Prospect Drive, Kimberly Crest	HL59, NR
	Redlands Bowl	SPHD, HD8
405	Redlands Boulevard, West, Historic Wall Signs	HR108
703	San Mateo Street, South, William P. Greiner Shrine Children's Home	HL103
707	San Mateo Street, South, William P. Greiner Shrine Children's Home	HL103
709	San Mateo Street, South, William P. Greiner Shrine Children's Home	HL103
711	San Mateo Street, South, William P. Greiner Shrine Children's Home	HL103
715	San Mateo Street, South, William P. Greiner Shrine Children's Home	HL103
124	San Mateo Street, South, Governor Jackson House	HR71
1027	San Mateo Street, South, Henry Fisher Garden	HR20
1060	San Mateo Street	HD2
31985	San Timoteo Canyon Road, San Timoteo Canyon Schoolhouse	NR
	Santa Fe Depot District (SFDD) (see also 349-351 Orange St.)	NR
	Smiley Park	SPHD, HD8
	Smiley Park Historic District (HD8)	NR
121	Sierra Vista Drive, Auerbacher House	HR104, NR
220	Sonora Street, Hammond House	HR21
24 - 30	State Street, East, Buster Bldg.	HR33

KEY

CITY OF DESIGNATED RESOURCES

HL# = Historic Landmark with City Number
 HR# = Historic Resource with City Number
 N = Nominated Resource

HD1 = Eureka Street Historic District
 HD2 = West Highland Avenue Historic and Scenic District
 HD3 = Early Redlands Historic and Scenic District
 HD4 = Normandie Court Historic District
 HD5 = East Fern Avenue Historic and Scenic District
 HD6 = Garden Hill Historic and Scenic District
 HD7 = LaVerne Street Historic and Scenic District
 HD8 = Smiley Park Neighborhood Historic and Scenic District

FEDERAL AND STATE DESIGNATIONS

SPHD = Smiley Park Historic District SFDD = Santa Fe Depot District
 NR = National Register

City of Redlands

DESIGNATED HISTORIC RESOURCES AS OF NOVEMBER 2, 2023

25	State Street, East, A.G. Hubbard Bldg.	HL39
200 - 202	State Street, East, Gregory Bldg.	HR91
21	Stuart Avenue, West, Cope Commercial Co. Warehouse	SFDD
205	Stuart Avenue, West, Rettig Machine Shop	SFDD
52	Summit Avenue, Benton Johnson House	HR49
	Terrace Park (a strip of land between Colton Avenue and Terrace Avenue, and Church and Sixth Streets)	HR115
190	Terracina Boulevard, Morey Mansion	HR22
330	Third Street, West, Mutual Orange Distributors (MOD) Packing House	SFDD, HR132
411	University Street, North, Redlands Lawn Bowling Club	HR124
0 - 24	Vine Street, East, Fox Theater	HL35
114	Vine Street, West, Old Family Service Bldg.	SPHD, HD8, HR50
120	Vine Street, West	SPHD, HD8
125	Vine Street, West, Lincoln Shrine	SPHD, HD8, NR
125	Vine Street, West Smiley Library	SPHD, HD8, NR
933	Walnut Avenue, E.M. Cope House	HR60
547	Walnut Avenue	HD2
565	Walnut Avenue, Wissahickon Inn	HD2, HR131

KEY

CITY OF DESIGNATED RESOURCES

HL# = Historic Landmark with City Number
 HR# = Historic Resource with City Number
 N = Nominated Resource

HD1 = Eureka Street Historic District
 HD2 = West Highland Avenue Historic and Scenic District
 HD3 = Early Redlands Historic and Scenic District
 HD4 = Normandie Court Historic District
 HD5 = East Fern Avenue Historic and Scenic District
 HD6 = Garden Hill Historic and Scenic District
 HD7 = LaVerne Street Historic and Scenic District
 HD8 = Smiley Park Neighborhood Historic and Scenic District

FEDERAL AND STATE DESIGNATIONS

SPHD = Smiley Park Historic District SFDD = Santa Fe Depot District
 NR = National Register

City of Redlands

DESIGNATED HISTORIC RESOURCES AS OF NOVEMBER 2, 2023

PROPERTIES LISTED ON THE NATIONAL REGISTER OF HISTORIC PLACES

(DESIGNATED BY THE U.S. NATIONAL PARK SERVICE)

<i>Property Name</i>	<i>Address / Location</i>	<i>Status</i>	<i>Listed Date</i>	<i>Reference #</i>
A. K. Smiley Public Library	125 W. Vine St.	Listed	12/12/1976	76000513
Auerbacher Home	121 Sierra Vista Dr.	Listed	8/01/2012	12000442
Barton Villa	11245 Nevada St.	Listed	10/24/1996	96001176
Beverly Ranch	923 W. Fern Ave.	Listed	2/11/2004	04000018
Bridge No. 54C-368	Carries Greenspot Road over the Santa Ana River	Eligible		65000682
City Transfer & Storage Co. Warehouse	440 Oriental Avenue	Listed	10/23/2023	100009474
Dunn, Robert J., House	1621 Garden St.	Listed	7/24/2017	100001336
Judson and Brown Ditch	Crosses San Bernardino FCD Rd.	Listed	9/29/2015	15000646
Kimberly Crest	1325 Prospect Dr.	Listed	3/28/1996	96000328
Marshall House	27297 Barton Rd.	Eligible		65000873
Mill Creek Zanja	Sylvan Blvd. E to Mill Creek Rd.	Listed	5/12/1977	77000329
Redlands Central Railway Company Car Barn	746 E. Citrus Ave.	Listed	1/03/1991	90002119
Redlands Santa Fe Depot District	Roughly bounded by Stuart Ave., North 5th St., Redlands Blvd., Eureka St., and the SFRR tracks	Listed	10/29/1991	91001535
San Timoteo Canyon Schoolhouse	31985 San Timoteo Canyon Rd.	Listed	1/19/2001	00001646
Smiley Park Historic District	Roughly bounded by Brookside Ave., Cajon St., Cypress Ave., and Buena Vista St.	Listed	12/29/1994	94001487
U.S. Post Office - Redlands Main	201 Brookside Ave.	Listed	1/11/1985	85000135

KEY

CITY OF DESIGNATED RESOURCES

HL# = Historic Landmark with City Number
 HR# = Historic Resource with City Number
 N = Nominated Resource

HD1 = Eureka Street Historic District
 HD2 = West Highland Avenue Historic and Scenic District
 HD3 = Early Redlands Historic and Scenic District
 HD4 = Normandie Court Historic District
 HD5 = East Fern Avenue Historic and Scenic District
 HD6 = Garden Hill Historic and Scenic District
 HD7 = LaVerne Street Historic and Scenic District
 HD8 = Smiley Park Neighborhood Historic and Scenic District

FEDERAL AND STATE DESIGNATIONS

SPHD = Smiley Park Historic District SFDD = Santa Fe Depot District
 NR = National Register

City of Redlands

DESIGNATED HISTORIC RESOURCES AS OF NOVEMBER 2, 2023

List of Historic District Maps

Historic District No. 1	Eureka Street Historic District
Historic District No. 2	West Highland Avenue Historic and Scenic District
Historic District No. 3	Early Redlands Historic and Scenic District
Historic District No. 4	Normandie Court Historic District
Historic District No. 5	East Fern Avenue Historic and Scenic District
Historic District No. 6	Garden Hill Historic and Scenic District
Historic District No. 7	La Verne Street Historic and Scenic District
Historic District No. 8	Smiley Park Neighborhood Historic and Scenic District

KEY

CITY OF DESIGNATED RESOURCES

HL# = Historic Landmark with City Number
HR# = Historic Resource with City Number
N = Nominated Resource

HD1 = Eureka Street Historic District
HD2 = West Highland Avenue Historic and Scenic District
HD3 = Early Redlands Historic and Scenic District
HD4 = Normandie Court Historic District
HD5 = East Fern Avenue Historic and Scenic District
HD6 = Garden Hill Historic and Scenic District
HD7 = LaVerne Street Historic and Scenic District
HD8 = Smiley Park Neighborhood Historic and Scenic District

FEDERAL AND STATE DESIGNATIONS

SPHD = Smiley Park Historic District SFDD = Santa Fe Depot District
NR = National Register

HISTORIC DISTRICT 1 EUREKA STREET HISTORIC DISTRICT



LEGEND
 Historic District



Map Prepared by the City of Redlands, Municipal Utilities Dept., GIS Services on October 5, 1999

HISTORIC DISTRICT 2 WEST HIGHLAND AVENUE HISTORIC AND SCENIC DISTRICT

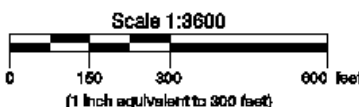
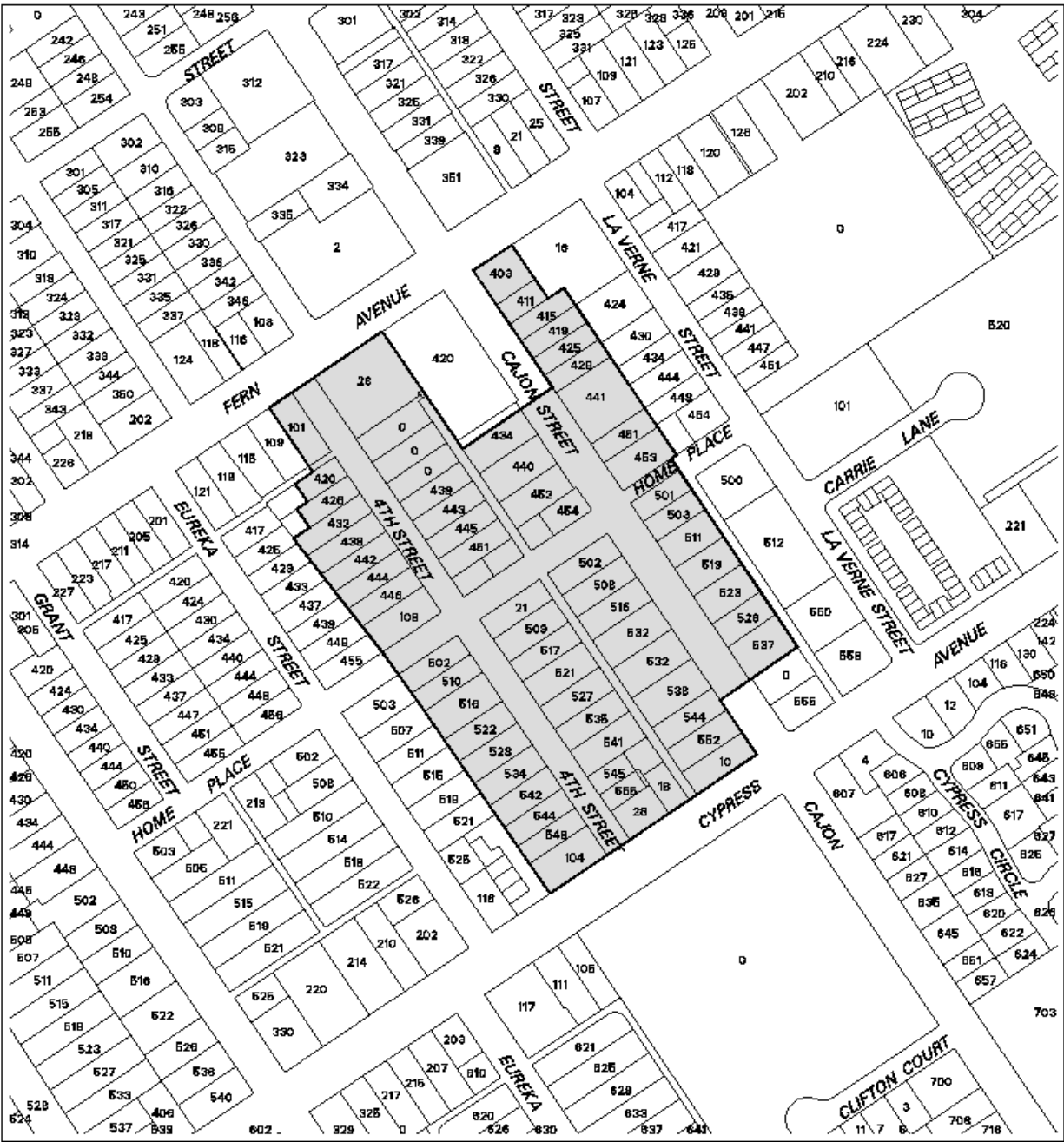


LEGEND
 Historic District



Map Prepared by the City of Redlands, Municipal Utilities Dept., GIS Services on October 5, 1999

HISTORIC DISTRICT 3 EARLY REDLANDS HISTORIC AND SCENIC DISTRICT

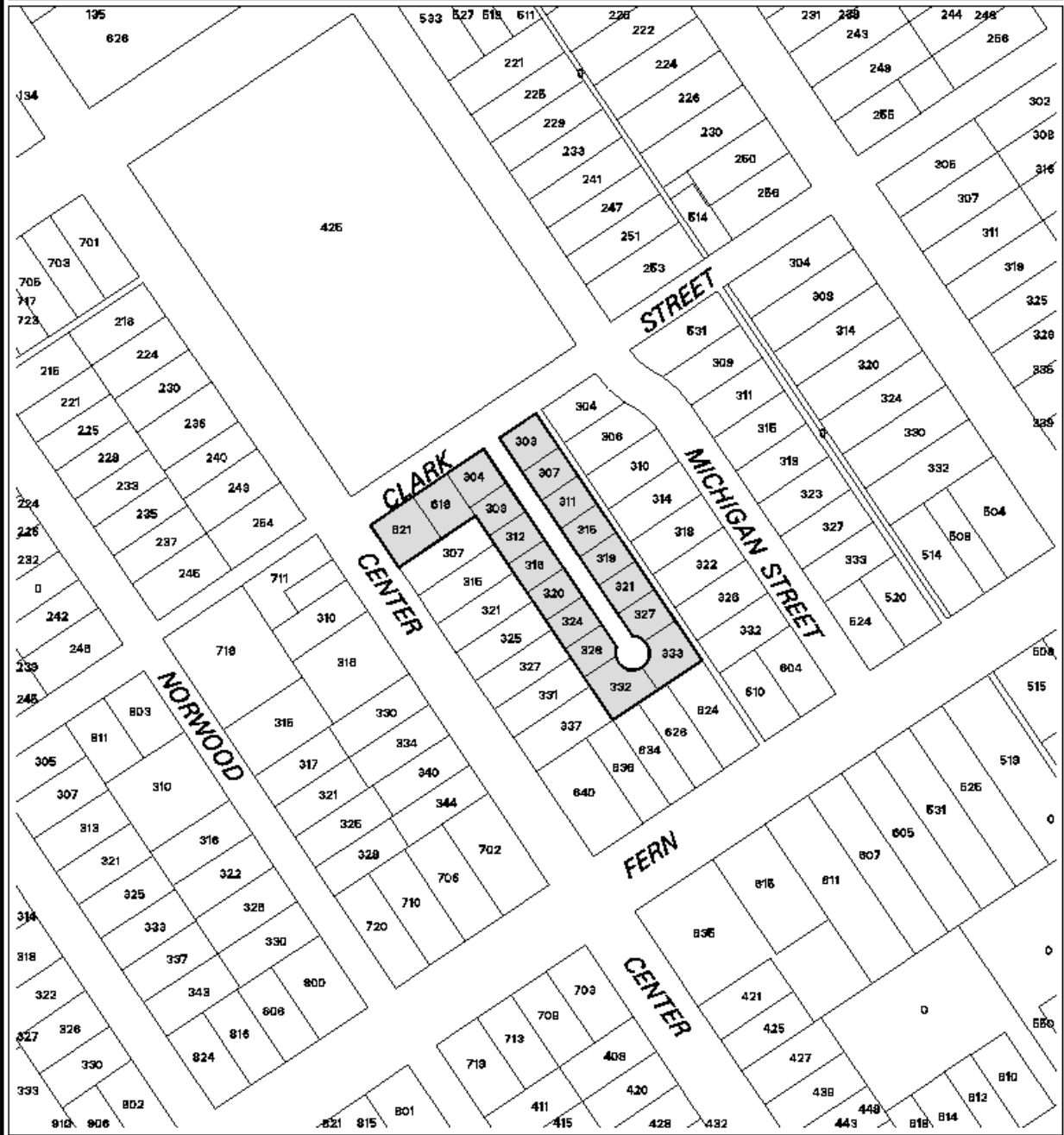


LEGEND
 Historic District



Map Prepared by the City of Redlands, Municipal Utilities Dept., GIS Services on October 5, 1999

HISTORIC DISTRICT 4 NORMANDIE COURT HISTORIC DISTRICT



LEGEND

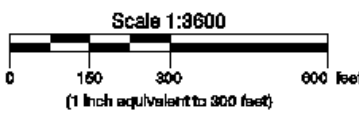
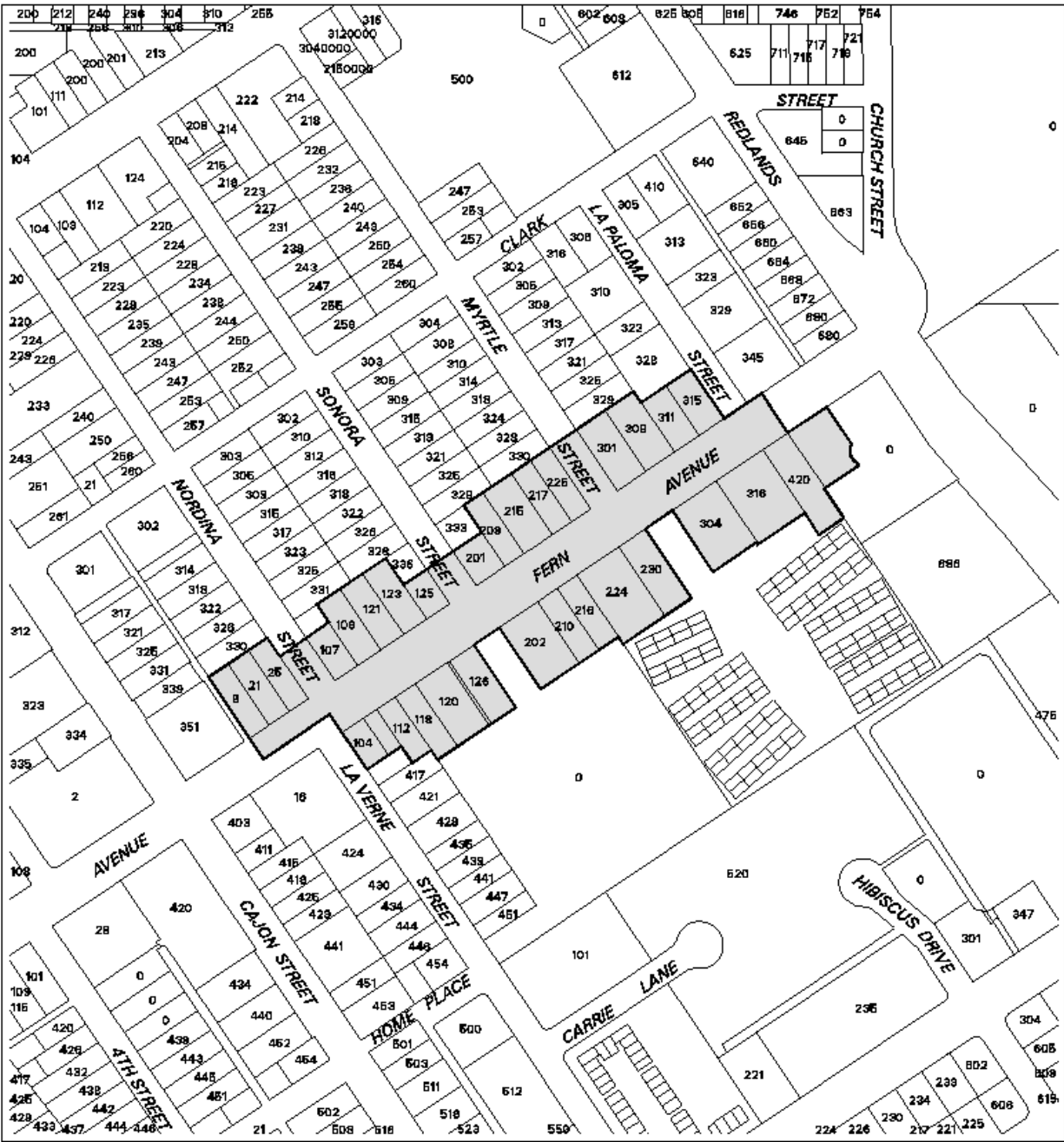
 Historic District



Map Prepared by the City of Redlands, Municipal Utilities Dept., GIS Services on October 5, 1999

HISTORIC DISTRICT 5

EAST FERN AVENUE HISTORIC AND SCENIC DISTRICT

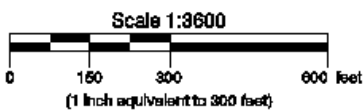
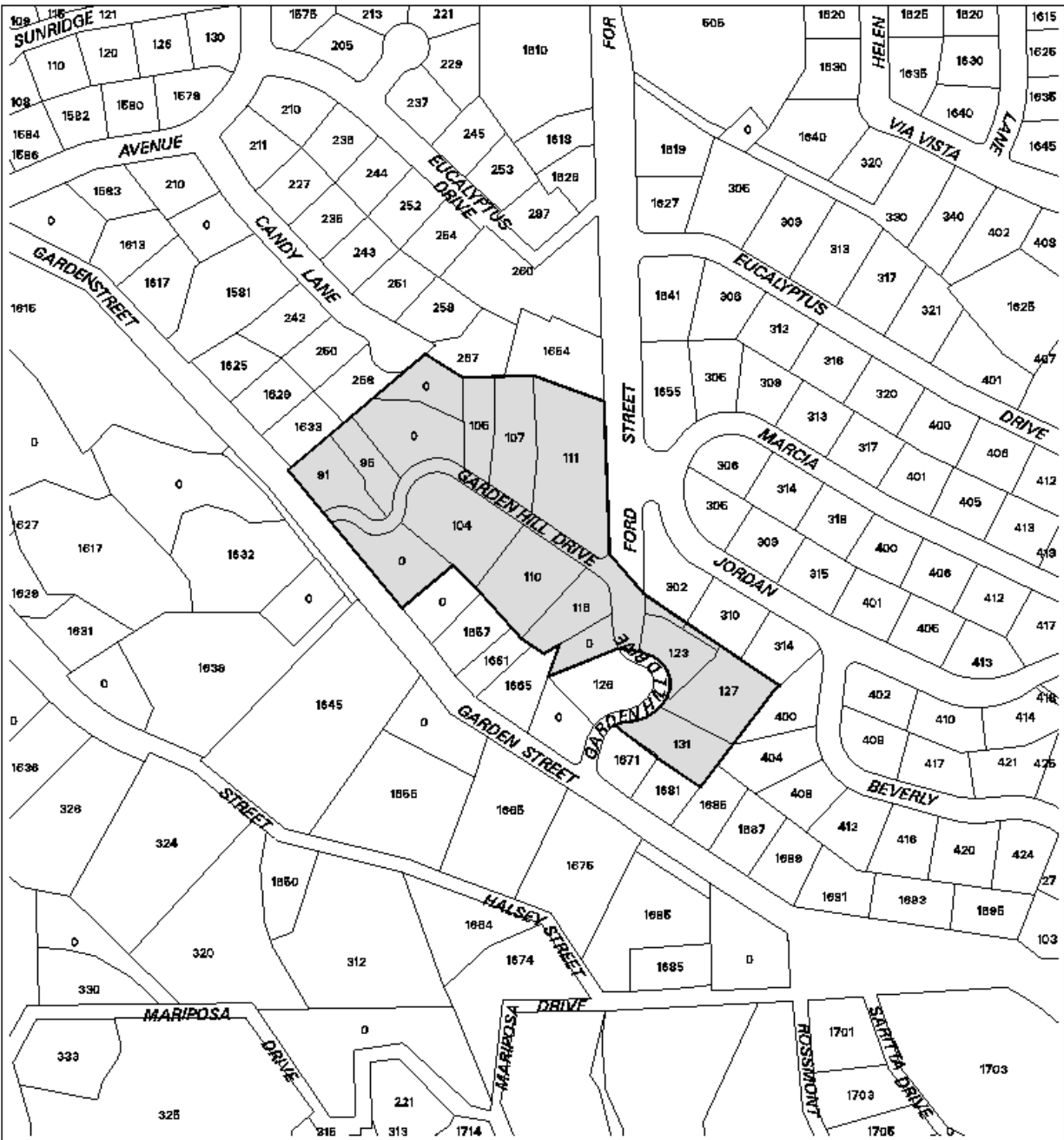


LEGEND
 Historic District



Map Prepared by the City of Redlands, Municipal Utilities Dept., GIS Services on October 5, 1999

HISTORIC DISTRICT 6 GARDEN HILL HISTORIC AND SCENIC DISTRICT



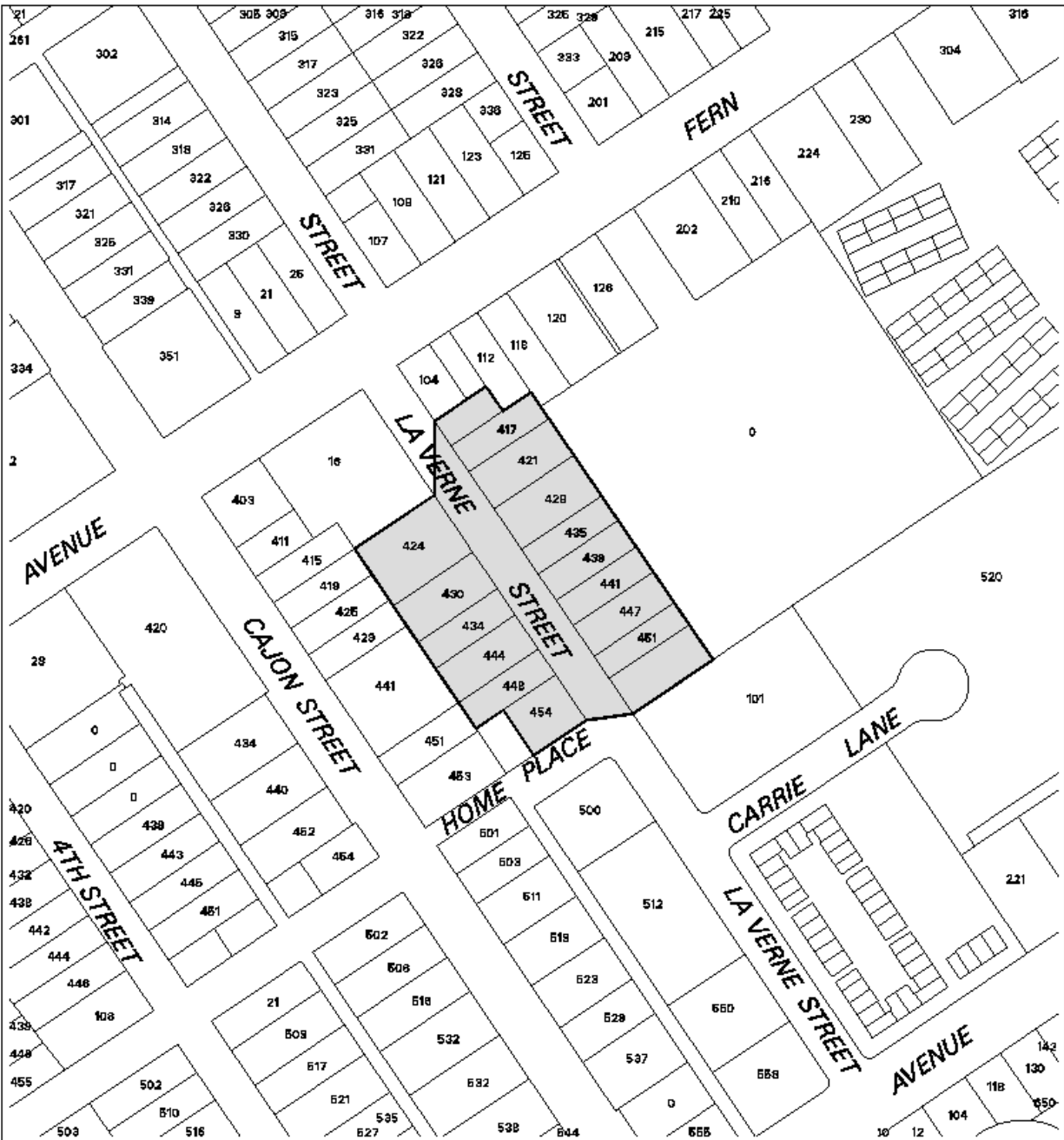
LEGEND

 Historic District



Map Prepared by the City of Redlands, Municipal Utilities Dept., GIS Services on October 5, 1999

HISTORIC DISTRICT 7 LAVERNE STREET HISTORIC AND SCENIC DISTRICT



LEGEND
 Historic District



Map Prepared by the City of Redlands, Municipal Utilities Dept., GIS Services on October 5, 1999

HISTORIC DISTRICT 8 SMILEY PARK HISTORIC AND SCENIC DISTRICT



LEGEND
 Historic District



Map Prepared by the City of Redlands, Municipal Utilities Dept., GIS Services on October 5, 1999