



# Partnering with Nature to Store Our Water



**San Bernardino Valley  
Water Conservation District**



# Mission

As one of California's first sustainable groundwater replenishment agencies, the District proactively recharges and improves groundwater for the benefit of water users, local businesses, and native flora and fauna in a financially responsible way.

The District leverages our unparalleled expertise as stewards of the water and land, responsibly innovating in water and habitat conservation, harmonizing and enhancing working landscapes, and enriching open space as a community asset.



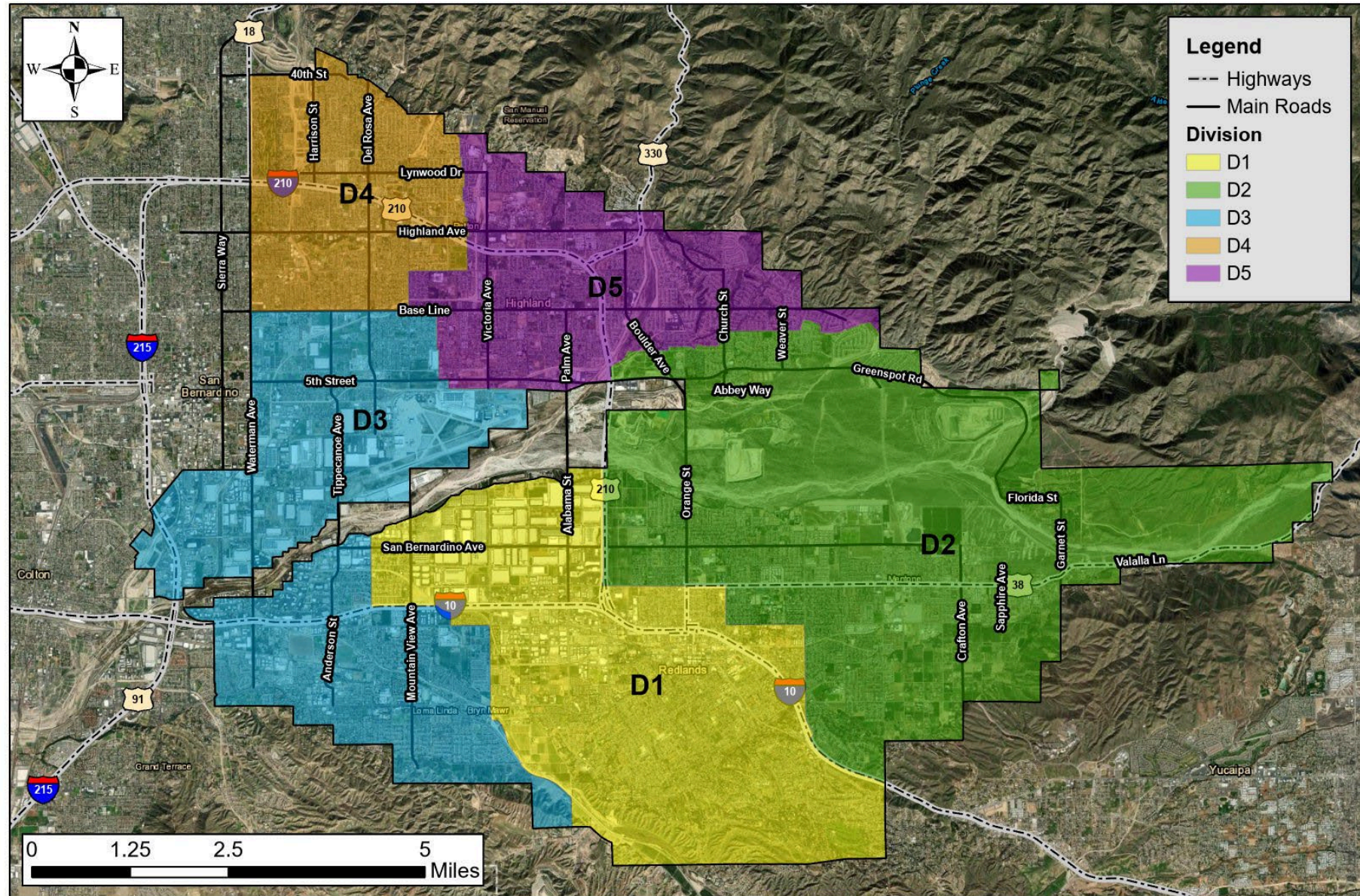
# Who We Are

- Special Purpose District under §74000 California Water Code WCD Act 1931
  - One of eleven in CA
  - Water Conservation Association from 1908-1931
  - Water Conservation District in 1931
  - Five-member elected Board
  - 10 FTE, 5 PTE
  - Funding via Groundwater Charge
    - \$16.95 per acre foot
    - \$12.00 per acre foot sustainability charge
  - 49,807 acre boundary



# SBVWCD Boundary and Districts

Coordinate System:  
 NAD 1983 StatePlane California V FIPS 0405 Feet  
 Projection: Lambert Conformal Conic  
 Datum: North American 1983  
 Source: SBVWCD  
 GIS Contact: Anna Frey  
 M:\Boundary Redistricting\2020  
 August 4, 2023



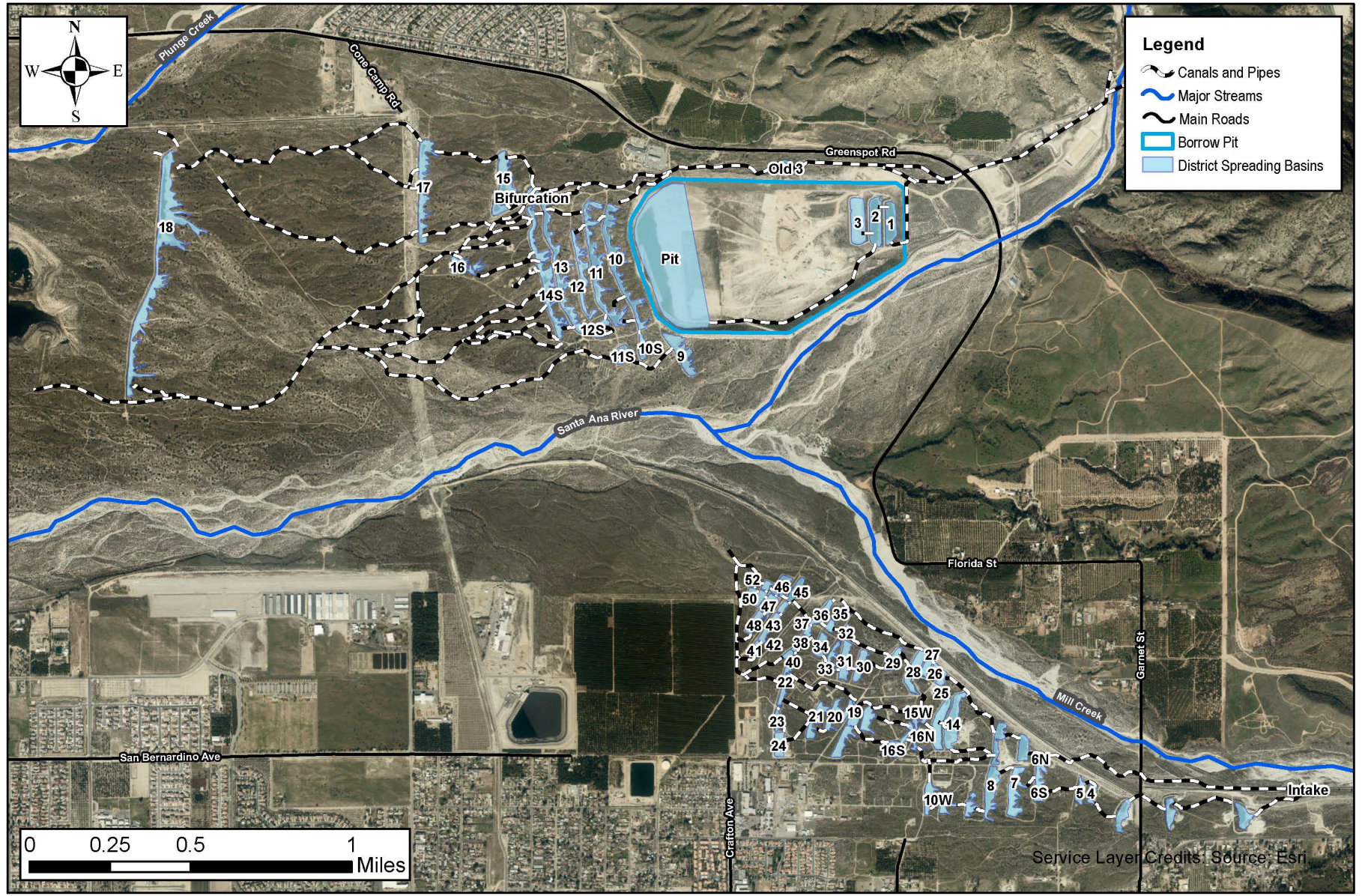


# What We Do

- Recharged 1,256,419 AF into the Bunker Hill Groundwater Basin
  - Bunker Hill GB provides over 70% of the region's water
  - Water rights
- Interconnected facilities and endangered species management
  - 2,368 acres
  - 71 recharge basins
  - 4 endangered species
- Water conservation education programs
  - Collaboration with Inland Empire Resources Conservation District

# San Bernardino Valley Water Conservation District - Spreading Facilities

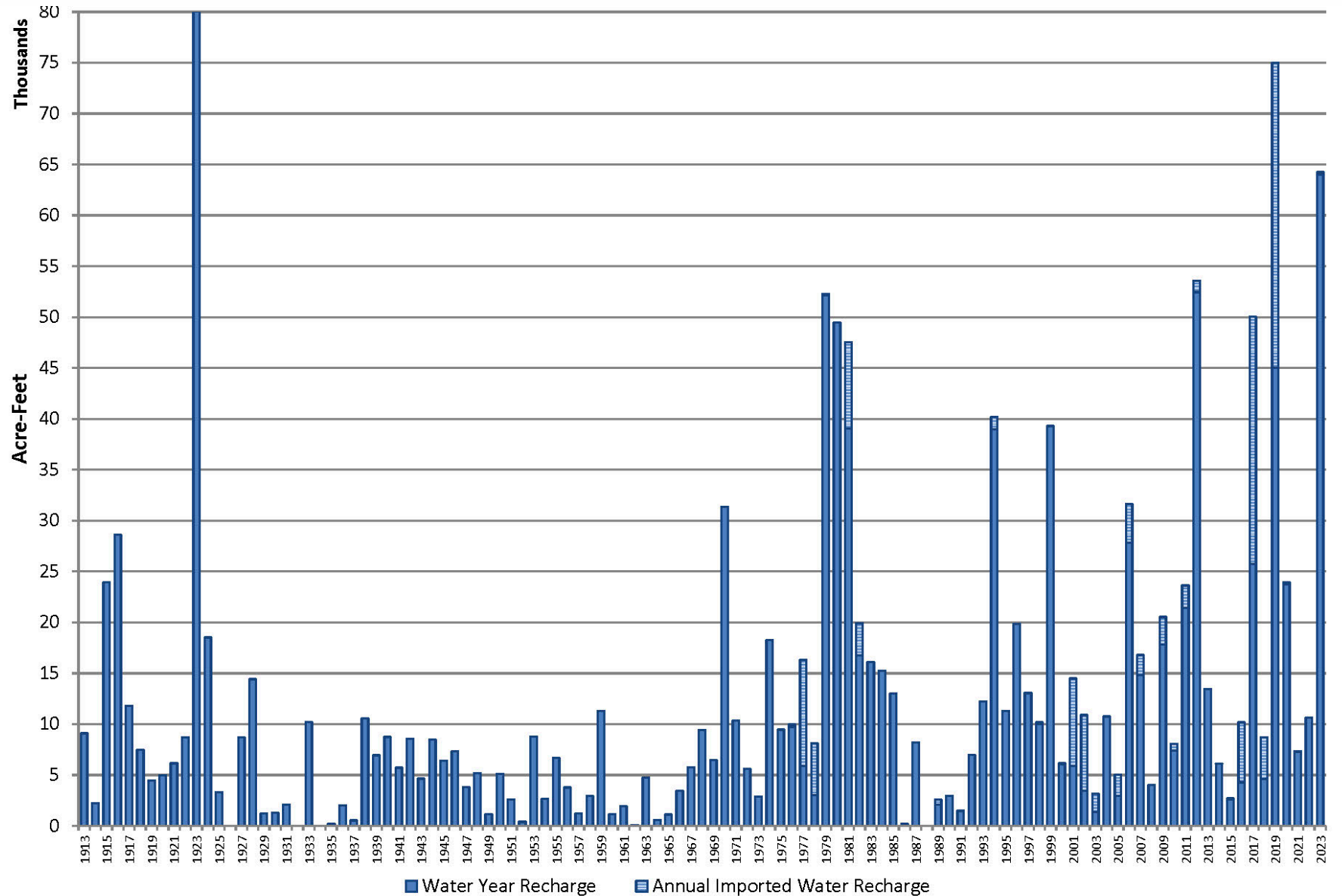
Coordinate System:  
 NAD 1983 StatePlane California V FIPS 0405 Feet  
 Projection: Lambert Conformal Conic  
 Datum: North American 1983  
 Source: SBVWCD, CASIL, SBVMWD  
 GIS Contact: K. Scholte  
 September 12, 2022



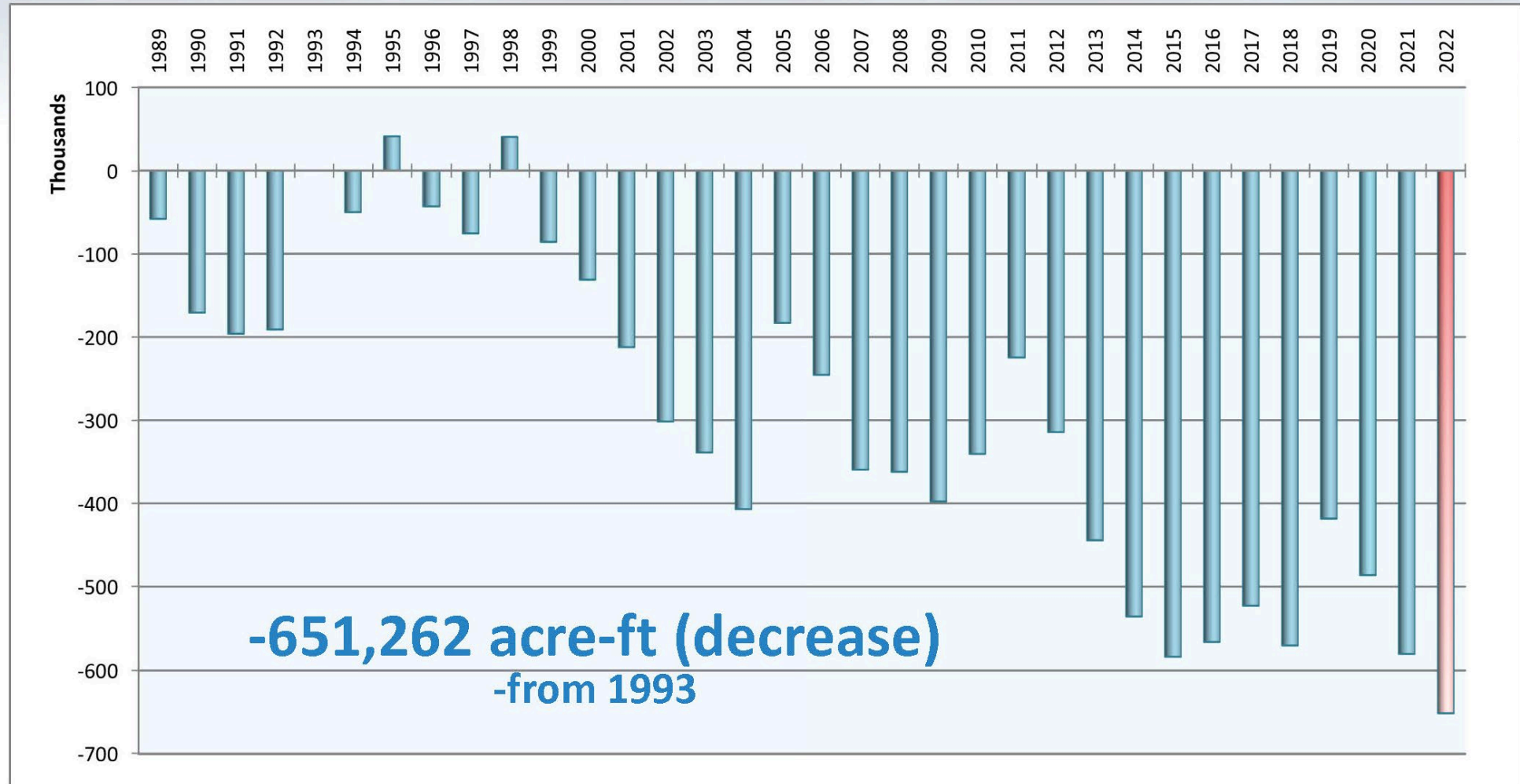
Service Layer Credits: Source: Esri



# Annual Aquifer Recharge to the Bunker Hill Basin in Acre-Feet



# Bunker Hill Basin Groundwater Storage Today







# Evolving for the Future

- Optimize facilities
  - Adaptive operations to respond to climate extremes
  - **Plunge Creek Conservation Project**
  - Facilities optimization analysis
  - Enhanced Recharge Project partnership
  - Program for Expansion of Recharge Capacity partnership
- Optimize water available for recharge
  - Groundwater Council
- Streamline permitting
  - Upper Santa Ana River Wash Habitat Conservation Plan
  - San Bernardino Valley Conservation Trust
- Trails partnership for public access on District lands



**pilot  
channel**

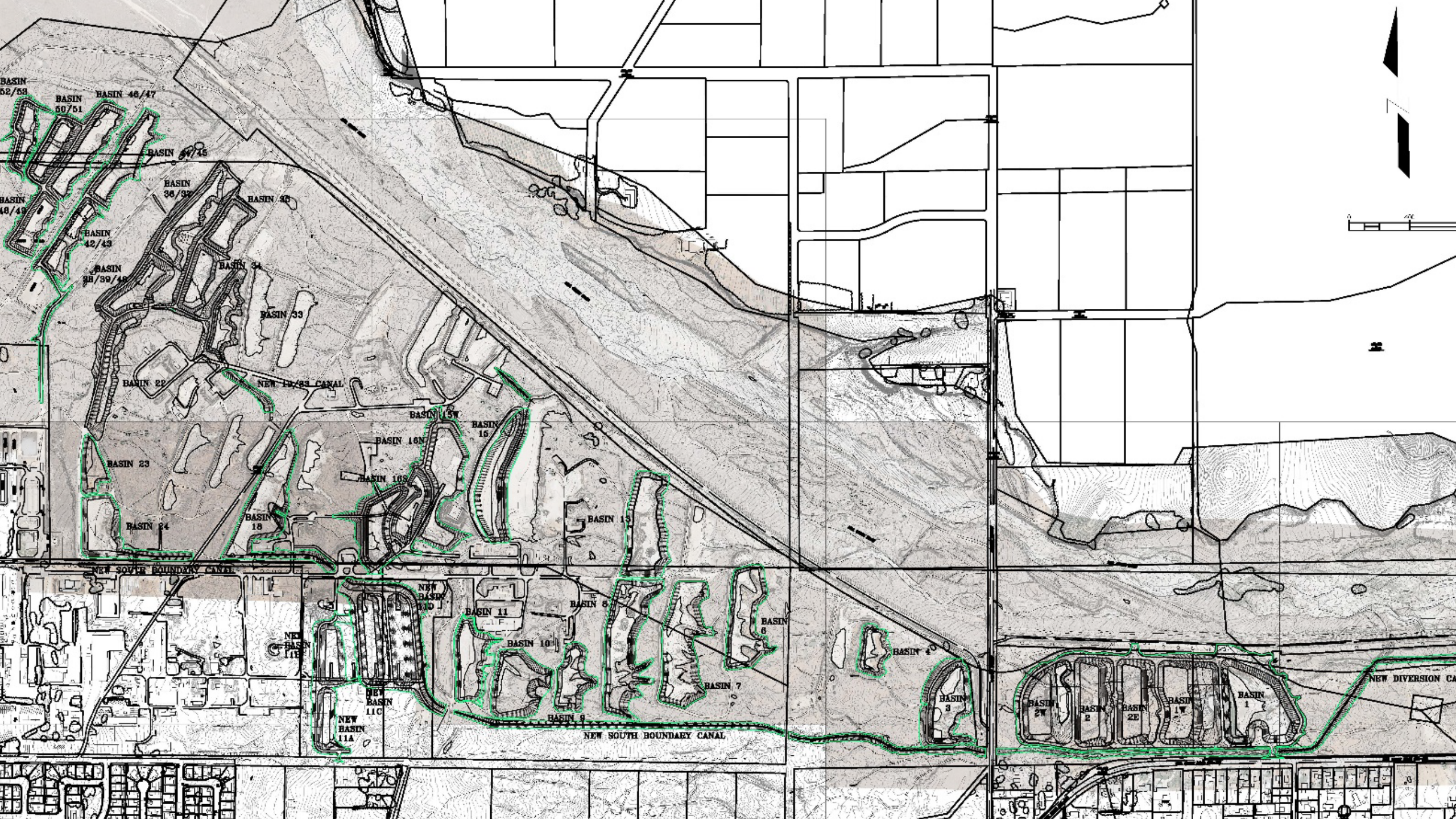
**Incised  
channel**

**splitter  
mound**



# Evolving for the Future

- Optimize facilities
  - Adaptive operations to respond to climate extremes
  - Plunge Creek Conservation Project
  - **Facilities optimization analysis**
  - Enhanced Recharge Project partnership
  - Program for Expansion of Recharge Capacity partnership
- Optimize water available for recharge
  - Groundwater Council
- Streamline permitting
  - Upper Santa Ana River Wash Habitat Conservation Plan
  - San Bernardino Valley Conservation Trust
- Trails partnership for public access on District lands



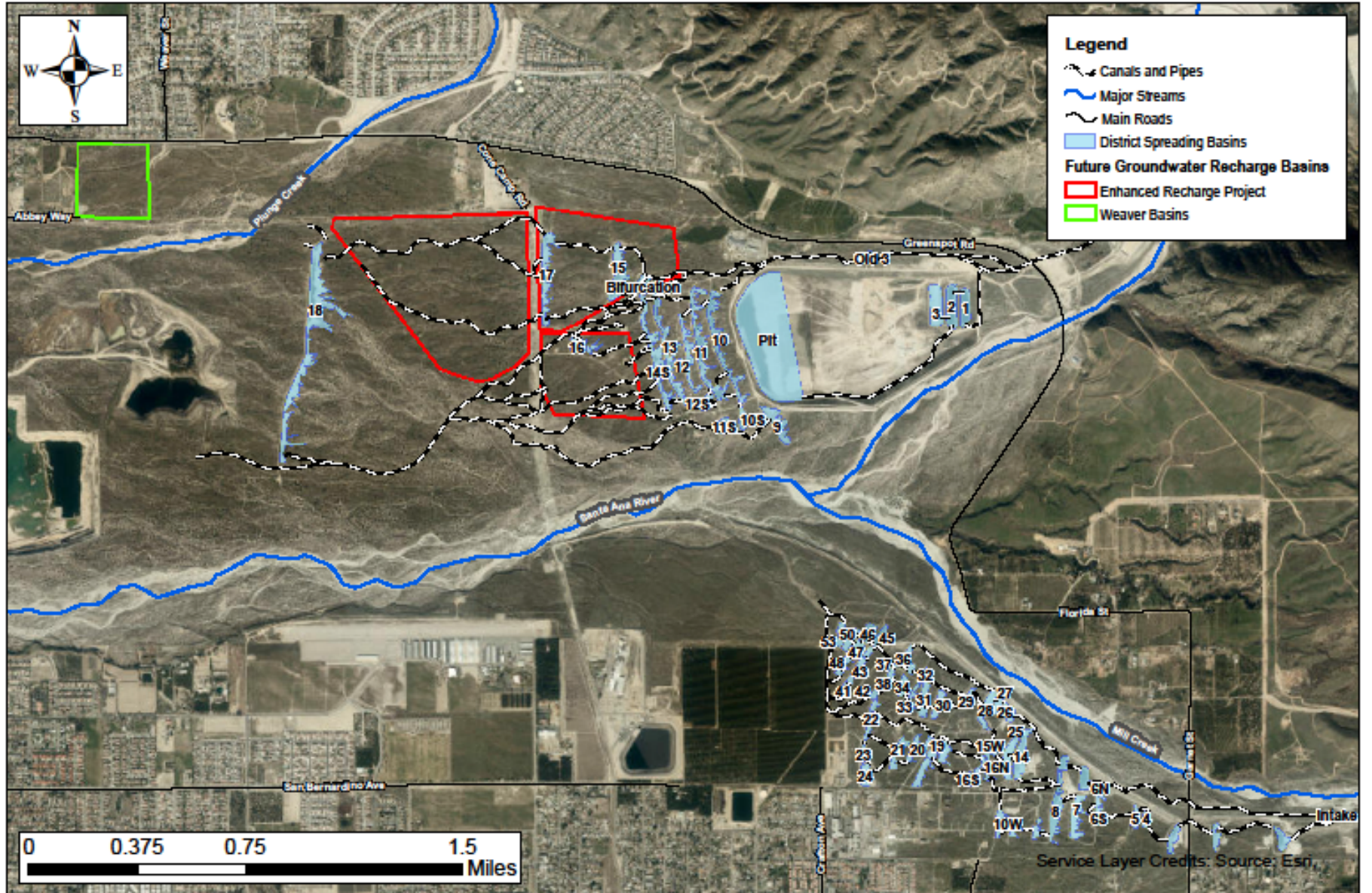


# Evolving for the Future

- Optimize facilities
  - Adaptive operations to respond to climate extremes
  - Plunge Creek Conservation Project
  - Facilities optimization analysis
  - **Enhanced Recharge Project partnership**
  - Program for Expansion of Recharge Capacity partnership
- Optimize water available for recharge
  - Groundwater Council
- Streamline permitting
  - Upper Santa Ana River Wash Habitat Conservation Plan
  - San Bernardino Valley Conservation Trust
- Trails partnership for public access on District lands

# San Bernardino Valley Water Conservation District - Future Spreading Facilities

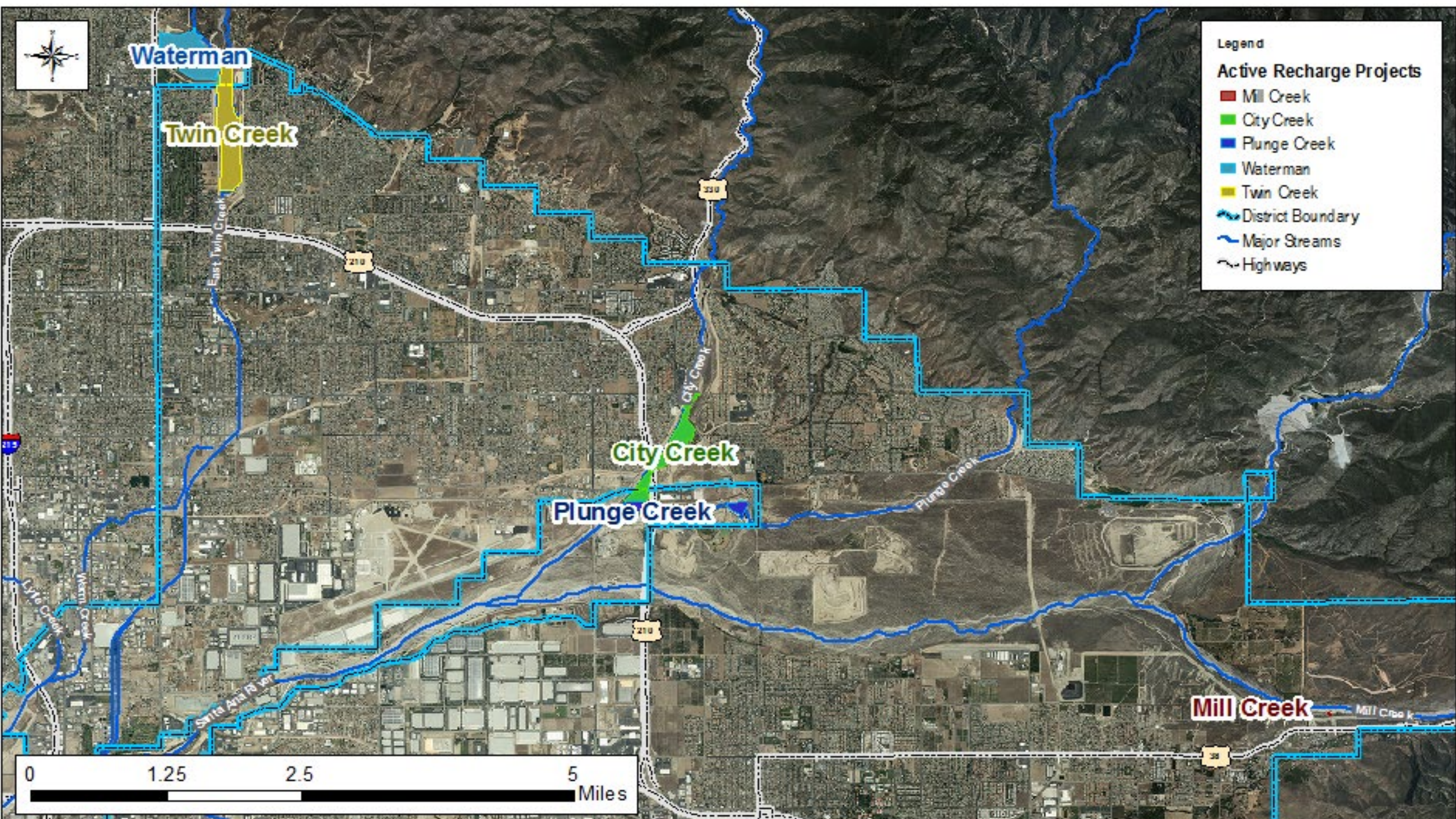
Coordinate System:  
 NAD 1983 StatePlane California V FIPS 0405 Feet  
 Projection: Lambert Conformal Conic  
 Datum: North American 1983  
 Source: SBWCD, CASIL, SBWMD  
 GIS Contact: K. Scholle  
 September 28, 2022





# Evolving for the Future

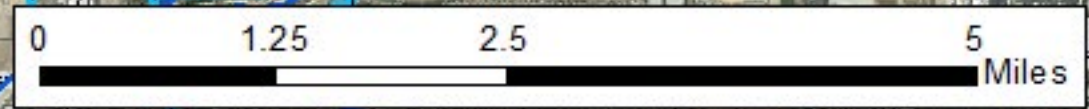
- Optimize facilities
  - Adaptive operations to respond to climate extremes
  - Plunge Creek Conservation Project
  - Facilities optimization analysis
  - Enhanced Recharge Project partnership
  - **Program for Expansion of Recharge Capacity partnership**
- Optimize water available for recharge
  - Groundwater Council
- Streamline permitting
  - Upper Santa Ana River Wash Habitat Conservation Plan
  - San Bernardino Valley Conservation Trust
- Trails partnership for public access on District lands



**Legend**

**Active Recharge Projects**

- Mill Creek
- City Creek
- Plunge Creek
- Waterman
- Twin Creek
- District Boundary
- Major Streams
- Highways





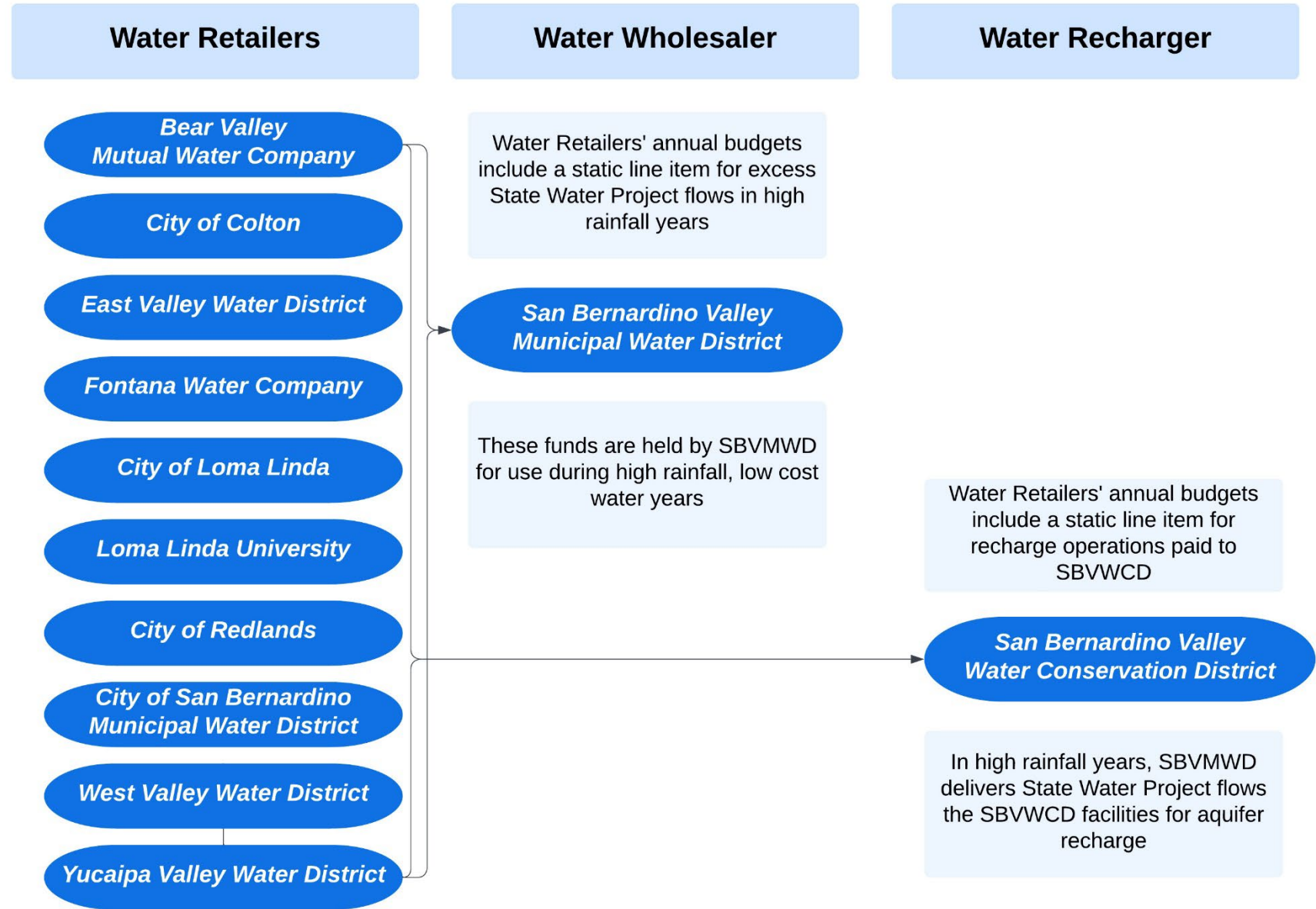


# Evolving for the Future

- Optimize facilities
  - Adaptive operations to respond to climate extremes
  - Plunge Creek Conservation Project
  - Facilities optimization analysis
  - Enhanced Recharge Project partnership
  - Program for Expansion of Recharge Capacity partnership
- Optimize water available for recharge
  - **Groundwater Council**
- Streamline permitting
  - Upper Santa Ana River Wash Habitat Conservation Plan
  - San Bernardino Valley Conservation Trust
- Trails partnership for public access on District lands



# Groundwater Council





# Evolving for the Future

- Optimize facilities
  - Adaptive operations to respond to climate extremes
  - Plunge Creek Conservation Project
  - Facilities optimization analysis
  - Enhanced Recharge Project partnership
  - Program for Expansion of Recharge Capacity partnership
- Optimize water available for recharge
  - Groundwater Council
- Streamline permitting
  - **Upper Santa Ana River Wash Habitat Conservation Plan**
  - San Bernardino Valley Conservation Trust
- Trails partnership for public access on District lands



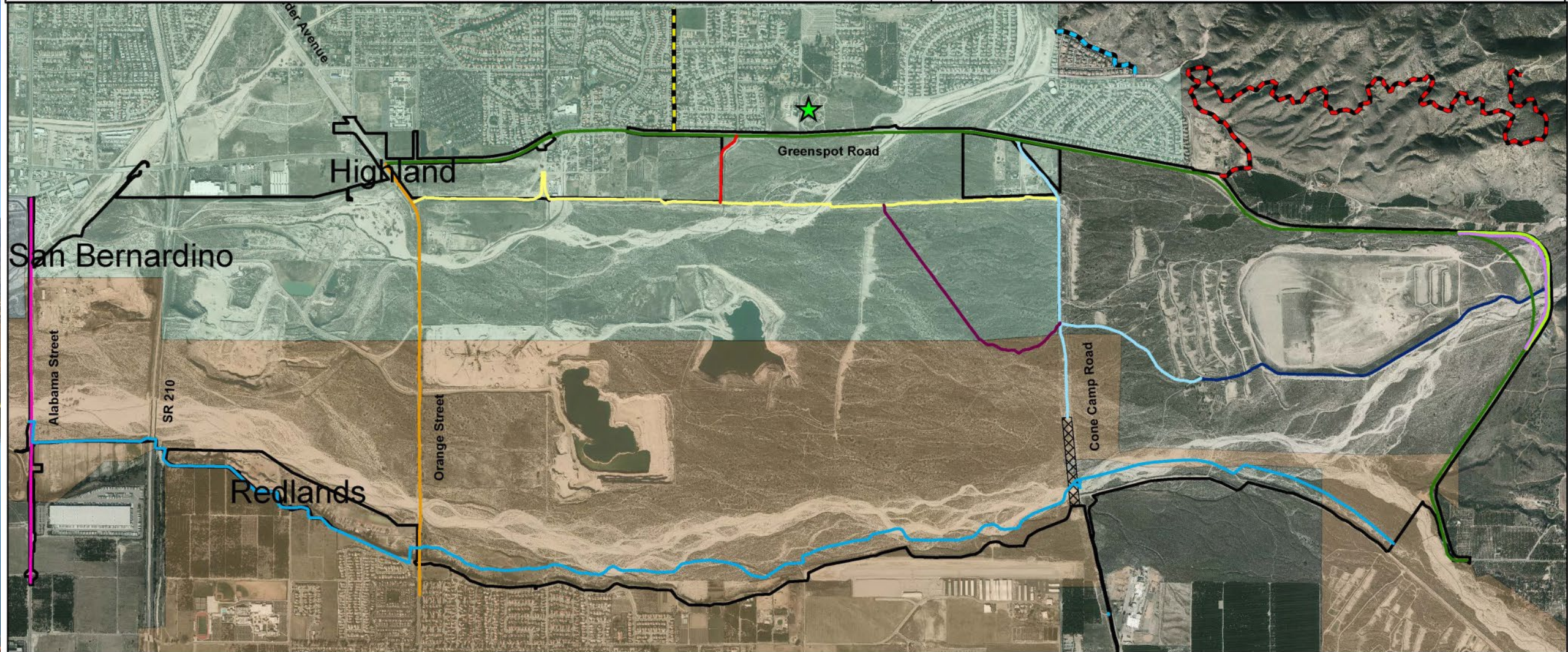
Photo courtesy of Mikael Romich

Ph  
Mi



# Evolving for the Future

- Optimize facilities
  - Adaptive operations to respond to climate extremes
  - Plunge Creek Conservation Project
  - Facilities optimization analysis
  - Enhanced Recharge Project partnership
  - Program for Expansion of Recharge Capacity partnership
- Optimize water available for recharge
  - Groundwater Council
- Streamline permitting
  - Upper Santa Ana River Wash Habitat Conservation Plan
  - San Bernardino Valley Conservation Trust
- **Trails partnership** for public access on District lands



**Trails**

- Alabama Street Trail
- Borrow Pit South Rim Trail
- Boulder Avenue / Orange Street Trail
- Cone Camp Road Trail
- Greenspot Road Trail
- Old Greenspot Road Horse Trail
- Old Greenspot Road Trail
- Old Rail Line Trail
- Pole Line Trail
- Santa Ana River Trail
- Weaver Street Trail

**Local Trails and Connections**

- Alder Creek Road
- East Valley Corridor
- Northfork Trail
- Shelton Trail
- WSPA Trail Connection
- Wash Plan Boundary
- Aurantia Park

# Thank You

---

For more than a century, SBVWCD has cultivated our relationship to the community, to one another, and to the land itself. We are stewards of the San Bernardino Valley water basin and the native species of the wash above it. We protect the land that cradles our region's water by being proudly scrappy and fearlessly creative. We take a fiscally prudent, pragmatic approach towards fulfilling our mission to that the water supply and the environment it depends upon will be forever protected and available for the community's use.

