

CITY OF REDLANDS

MUNICIPAL UTILITIES/PUBLIC WORKS COMMISSION AGENDA

ADEKUNLE OJO, CHAIRPERSON
R. BRAD THOMS, COMMISSIONER
THOMAS BREITKREUZ, COMMISSIONER
CHANDRASEKAR 'CV' VENKATRAMAN, COMMISSIONER

STEVE STOCKTON, VICE CHAIRPERSON
ZACHARY TRAVIS, COMMISSIONER
DAVID GARCIA, COMMISSIONER

This will be a teleconference meeting via Zoom.

Following public health recommendations to limit public gatherings during the COVID-19 pandemic, City Manager Charles M. Duggan, Jr., acting as the City of Redlands Emergency Services Director has directed that Commission/Board meetings be closed to the public until further notice or until the current local State of Emergency has been lifted.

All votes during the teleconferencing meeting via Zoom will be conducted by roll call.

HOW TO SUBMIT COMMENTS: In order to have your public comment read into the public record at the meeting, members of the public are asked to submit comments (250 words or less) by 12:00 p.m. (noon) on Monday, June 7th, by email at eboehling@cityofredlands.org, or by telephone at 909-798-7527 x1935.

Individuals with a disability, consistent with the Americans with Disabilities Act, who need assistance with public comment, may contact Goutam Dobey by telephone at 909-798-7584 x2 or by email at gdobey@cityofredlands.org at least two hours before the meeting to make alternate arrangements.

The following information comprises the agenda for a meeting of the Municipal Utilities/Public Works Commission of the City of Redlands at the date and time noted below.

MONDAY, JUNE 7, 2021
4:00 P.M.

ZOOM MEETING INFORMATION:

Please click the link below to join the webinar or call the numbers listed:

<https://cityofredlands.zoom.us/j/97465144638?pwd=OFdXV0NLZUd6c0dSdFF5YnRjZWR5UT09>

Passcode: 997957
Webinar ID: 974 6514 4638

Or you may call any of the following numbers to join the meeting:

Toll-Free: (877) 853-5247 or (888) 788-0099

US locations: (669) 900-6833 | (253) 215-8782 | (346) 248-7799
(301) 715-8592 | (312) 626-6799 | (929) 205-6099

Page | 1

In compliance with the Americans with Disabilities Act, if you need special assistance to participate in this meeting, please contact Goutam Dobey of Municipal Utilities/Engineering Department at (909) 798-7584 x2. Notification 48 hours prior to the meeting will enable the City to make reasonable arrangements to ensure accessibility to this meeting. (28 CFR 35.102-35.104 ADA Title II) NOTE: Any writings or documents distributed to a majority of the Municipal Utilities/Public Works Commission regarding an open session agenda item less than 72 hours before this meeting are available at <https://www.cityofredlands.org/municipal-utilities-public-works-commission> for public inspection or at the Municipal Utilities & Engineering Department, 35 Cajon Street, Suite 15A by calling (909) 798-7698 x4145.

CITY OF REDLANDS

MUNICIPAL UTILITIES/PUBLIC WORKS COMMISSION AGENDA

MONDAY, JUNE 7, 2021
4:00 P.M.

1. ATTENDANCE

2. CALL TO ORDER

3. PUBLIC COMMENT

Commission Liaison Liz Boehling will read all public comments, up to 250 words, into record if they are received in accordance with the submittal timeframe stated on the previous page.

The Commission may not discuss or take any action on any public comment made, except that the Commission Members or staff may briefly respond to statements made or questions posed by members of the public. However, any matter that requires action will be referred to staff for a report and possible action at a subsequent meeting.

4. APPROVAL OF MINUTES

A. April 5, 2021 Regular Meeting Minutes

5. Director's Report

6. OLD BUSINESS

A. Format of Future Public Meetings

7. NEW BUSINESS

8. POSSIBLE AGENDA ITEMS FOR NEXT MEETING

9. ADJOURNMENT – Next Meeting is August 2, 2021 @ 4:00 pm

ATTACHMENTS:

A. Draft Minutes of April 5, 2021 Regular Meeting

B. MUED Director's Report

CITY OF REDLANDS
MUNICIPAL UTILITIES/PUBLIC WORKS COMMISSION
Regular Meeting Minutes
April 5, 2021, 4:00 PM

This meeting was conducted as a teleconference meeting. All votes during the meeting were conducted by roll call.

In compliance with public health recommendations to limit public gatherings during the Covid-19 pandemic and acting as the City of Redlands Emergency Services Director, City Manager Charles M. Duggan Jr., directed meetings of the Municipal Utilities/Public Works Commission (MUPWC) of Redlands be closed to the public until further notice or until the current local State of Emergency has been lifted. The MUPWC will continue to meet to conduct essential business. Public comments (up to 250 words) received by noon, April 5 were read aloud by MUPWC liaison.

1. ATTENDANCE

A quorum was reached with the following present at time of roll call: Chairperson Adekunle Ojo, Vice Chairperson Steve Stockton, Commissioners Brad Thoms, Chandrasekar 'CV' Venkatraman, and Tom Breitreuz. A quorum was established with 5 of 7 members present at time of roll call. Commissioner David Garcia joined by video shortly after roll call and Commissioner Zachary Travis joined the meeting via phone near the end of Agenda Item 7. City staff and guests present were: City Manager Charlie Duggan, Jr., Municipal Utilities and Engineering Director John Harris, Engineering Manager Goutam Dobey, Utilities Operations Manager Kevin Watson, Senior Project Manager Ross Wittman, Solid Waste Manager Louie Miranda, Administrative Analyst Elizabeth Boehling, Senior Administrative Assistant (MUPWC Liaison) Jane Weathers, and San Bernardino Valley Municipal Water District's Deputy General Manager Bob Tincher. Due to computer issues, Ms. Weathers was unable to view if any Attendees were listed in Zoom.

2. CALL TO ORDER

The meeting was called to order at 4:00 PM. Chairperson Ojo thanked and welcomed everyone for attending.

3. PUBLIC COMMENT

Ms. Weathers stated no public comments had been received.

4. APPROVAL OF MINUTES

- A. February 1, 2021 Regular Meeting Minutes**
- B. February 8, 2021 Special Meeting Minutes**
- C. February 22, 2021 Special Meeting Minutes**

The minutes for the February 1 regular meeting and special meetings for February 8 and 22 were reviewed.

A motion was made by Vice Chairperson Stockton and seconded by Commissioner Breitreuz to approve the meeting minutes of February 1, February 8 and February 22. The motion passed 6-0.

5. NEW BUSINESS

A. Update on Solid Waste and Landfill Division (Facilities and Community Services Director Chris Boatman)

Louie Miranda, Solid Waste Manager for the Facilities and Community Services Department, provided an update to the MUPWC on behalf of Director Boatman. Three automated side-loaders used for collecting refuse were replaced mid FY 2019-2020. Between March and May 2020, three front-end loader collection trucks were added to service commercial businesses and restaurants. Two additional vehicles – a roll-off truck and an automated residential collection truck – are expected in late 2021. The landfill staff is anxiously awaiting a new D7 landfill dozer in late April and have been utilizing a new refuse compactor since early 2020. Mr. Miranda apprised the group that the Phase 4 California Street Landfill expansion was completed in April 2020, which added seven to eight years of refuse landfill

CITY OF REDLANDS
MUNICIPAL UTILITIES/PUBLIC WORKS COMMISSION
Regular Meeting Minutes
April 5, 2021, 4:00 PM

capacity. Based on the total remaining capacity of 4.64 million cubic yards, the site's life calculation indicates current landfill lifespan is anticipated to end in first half of 2053. The new equipment, such as the new compactor, contributed to extending the landfill life, cutting waste by about 35 percent and increasing compaction rate significantly. The cost of the Phase 4 project was approximately \$3.3 million. An agreement the City entered into with Southern California Edison's Mountainview Power Plant (MVP) for the acceptance of filter cake material and MVP's payment to City ~\$1 million for a double liner system reduced City's project cost to ~\$2.5 million. Other enhancements included excavation and relocation of a 2,000 foot portion of underground header pipe to improve monitoring, maintenance, troubleshooting and prevention of liquid blocking the header pipe. Since this completion in early 2020, gas flow received at the landfill's flare increased, and the flare is running at full efficiency.

A Q & A followed between the commissioners and Mr. Miranda concerning the new technology, food waste diversion and compliance, recycling and diversion goals, and the community's awareness of the solid waste services. Operators' use of the new compactor has eliminated the guess-work for compaction, allowing operators to see the density of compacted trash, quickly identify areas still needing compaction, and alerting them when optimal/full compaction is achieved. The City remains in compliance with CalRecycle, meeting its diversion goal of 55%, and is continuing to offer organic collection for 37 businesses throughout the City. Short-term use of a roll-off bin years ago resulted in household hazardous waste items left in roll-off bins so the City had to cease the program. The current program, which has since resumed after CDC recommended pausing it at the beginning of the pandemic, allows solid waste customers to schedule curbside pickup of up to three large items twice a year. A suggestion was made to send information to City residential customers about solid waste services. Mr. Miranda expressed that overall the community is well-informed of the services available and are aware of the benefit of having a City-owned and operated landfill.

Commissioners expressed their appreciation for Mr. Miranda's update on solid waste and landfill divisions.

B. COVID-19 Orange Tier Meeting Format

Director Harris explained the purpose of this item was to initiate dialogue with the commissioners to gauge comfort level of in-person meetings. All present commissioners (Commissioner Travis had not yet joined the meeting) expressed an eagerness to meet in-person, a willingness to wear masks in-person if that was desired or required, and an allowance for members, public and staff to meet in-person or via Zoom.

6. STATUS REPORTS

A. MUED Director's Report (Municipal Utilities & Engineering Director John Harris)

Director Harris apprised the group that the City is now part of the San Bernardino Basin Area Groundwater Council (GC) and noted the GC's meeting agenda link had been provided to the group, and will plan to attach GC agendas to the Director's Report. At the last meeting, following discussion of the use of public tax dollars in the GC, he asked Mr. Wittman to reach out to San Bernardino Valley Municipal Water District's (Valley District) for clarification. Attached to the Director's Report is the letter response received from Valley District's CEO/General Manager Heather Dyer clarifying all the questions MUPWC posed at their last meeting. Additionally, Valley District's Chief Water Resources Officer/Deputy General Manager Bob Tincher was invited to the MUPWC's Zoom meeting to provide any further explanation if needed. This was much appreciated, as expressed by Commissioner Thoms, in that the letter and Director Harris' follow up provided a greater understanding of the funding for the GC.

As part of a routine update on the CIP status to the Commission, Director Harris stated staff recently opened bids for FY 20-21 Water CIP and issued a request for bids for the first phase of PMP 2020, which includes resurfacing of ~33 miles of City streets. As in the past, this coordination of projects ensures needed water line replacements are completed before planned street paving under PMP 2020.

CITY OF REDLANDS
MUNICIPAL UTILITIES/PUBLIC WORKS COMMISSION
Regular Meeting Minutes
April 5, 2021, 4:00 PM

The Wastewater Treatment Plant's Phase 1B project is going well, on schedule, and under budget. Both MUPWC and UAC recommended to City Council that staff consider updating Development Impact Fees (DIF). Included in the MUED's budget request is funding to update DIF.

In response to an inquiry of the City's preparation of bi-monthly utility billings, Director Harris explained meter reads are done manually and are not able to be done fast enough for monthly billing. The plan over the next several years is to move toward automated metering infrastructure (AMI) to allow for more efficient meter reading. AMI will have a device connecting to the meter with a wire and flat antenna attached to the meter pit lid. Throughout the annual meter replacements, lids with the antenna are also being replaced allowing for a seamless conversion. With regard to utility bills being consolidated, this alleviates City's customers' receipt of City bills for the various services provided. Chairperson Ojo suggested modifying the bills to better delineate water cost and to add meter and volumetric costs. He likes that the billing is consolidated and suggested making components more distinguishable would improve communications with City customers.

7. POSSIBLE AGENDA ITEMS FOR NEXT MEETING

Commissioner Stockton requested an update on operational procedures at the water treatment plants, status of each plant's influent, exit turbidity, and whether or not any operational problems were occurring. Commissioner CV requested a brief update on the water line replacement CIP following its award (this update may be provided in conjunction with the PMP project as bids likely will be received prior to the June 7 meeting). Commissioner Breitzkreuz asked for updates on the master plans being revised, which are on track for November 2021 completion. Commissioner Breitzkreuz also suggested being updated on big projects which would allow for MUPWC input as it relates to planning, building and safety, and public works. Director Harris reiterated the CIP list of water, non-potable and sewer projects previously presented to MUPWC for FY 2021-2022 is on track for delivery as promised.

8. ADJOURNMENT

Chairperson Ojo thanked the Commission and staff for a good, well-prepared and enjoyable meeting and adjourned the meeting at 4:51 pm upon Commissioner CV's motion and Commissioner Breitzkreuz' second motion to adjourn. It was stated the next regularly scheduled meeting will be on June 7, 2021.

ATTACHMENTS:

- A. Draft Minutes of February 1, 2021 Regular Meeting, February 8 & 22, 2021 Special Meetings**
- B. MUED Director's Report**



City of
REDLANDS
Incorporated 1888
Municipal Utilities & Engineering Department

JOHN R. HARRIS
Director

MEMORANDUM

TO: Adekunle Ojo, Municipal Utilities/Public Works Commission Chair

FROM: John R. Harris, Municipal Utilities & Engineering Department Director

DATE: May 27, 2021

SUBJECT: June 2021 Director's Report

Hello and thank you for serving the Redlands community as a Municipal Utilities/Public Works Commissioner (MUPWC)! City of Redlands Municipal Code Chapter 2.38 establishes the responsibilities of the MUPWC as follows:

"The commission is a resource for the City Council and City staff and buffer with the general public. In its advisory capacity, the commission shall be knowledgeable of all public works, utilities and engineering programs. The commission shall, through the individual and collective expertise of its members, provide advice to the Public Works and Municipal Utilities Departments regarding the public acceptability of proposed plans, programs and projects."

Planning Commission Meeting Agenda

On April 23, each Commissioner was registered to automatically receive Planning Commission (PC) meeting agendas. Commissioners must confirm their subscriptions, and may unsubscribe at any time. Public meeting agendas may also be accessed manually here:

<https://www.cityofredlands.org/search/site/meeting%20agendas>

Water Treatment Plant & Wastewater Treatment Plant Operations Update

A summary of potable water production, non-potable water production, and wastewater treatment is provided as Attachment "A". Potable water production and wastewater treatment increased slightly in 2020 compared to 2018 and 2019, while non-potable water production decreased. Many potential explanations exist for the difference in potable water production and wastewater treatment in 2020. One (1) plausible explanation relates to the COVID-19 pandemic. Throughout much of 2020, public schools replaced on-campus classes with distance learning, tele-commuting replaced on-site work environments, and the unemployment rate increased. It is

quite possible that residential landscape irrigation increased while people spent more time at home. The eleven percent (11%) increase in potable water production and two percent (2%) increase in wastewater treatment support that possibility, since virtually no landscape irrigation discharges to the sanitary sewer collection system. Similarly, the reduction in non-potable water production may be attributed to businesses reducing or eliminating landscape irrigation while typical business activities were restricted.

Seasonal Potable Water Production Challenges

- Seasonal (Spring/Summer) high TOC events related to algae blooms, which mainly affect the HWTP, typical of SWP deliveries through Silver Lake (DWR reservoir management) and SAR deliveries from directly behind the 7 Oaks Dam. Dam operations controlled by the U.S. Army Corp of Engineers seasonal control practices. Deliveries may also depend on SCE hydro operations.
- Enhanced coagulation (HWTP) to treat for high TOC events. Byproduct of treatment creates large volumes of sludge, at times land locking our sludge drying beds. To be addressed with a sludge press (included in our CIP).
- Despite enhanced coagulation, plant effluent TOC can be the major contributor to the distribution system disinfection byproducts (DBPs).
 - The issues sited above are closely monitored and if needed, production is reduced to address the treatment processes resulting in lost production/utilization of BV shares.
- Distribution system water age (reservoir turn over). Water age contributes to DBP formation, to be reviewed in the upcoming MBI water model. Part of the solution is to add reservoir mixing systems (included in our CIP).
- Rising Perchlorate levels in wells 38 & 39. Currently an engineered blending system. Treatment design for perchlorate treatment systems 38 & 39, Orange St. & Church St. (included in our CIP).
- Emergency power solutions (included in our CIP). We may need to add to the current list of sites in need of emergency power.
- Security.
- Data/Asset management and reporting tools (included in our CIP).
- System wide aging/end of life Motor Control equipment (VFDs, Soft Starter, Main Disconnects and entire MCC lineups including the cabinets).
- Entrained air in several potable wells located near the SAR (Airport 1 well, Airport 2 well, Muni well and to a lesser extent Mentone 2 well). Aesthetics issues which drives water quality complaints.
- Staff recruitment.

Seasonal Non-Potable Water Production Challenges

- Well maintenance (included in our CIP).
- Storage and booster system(s) (included in our CIP).
- Agreements between stakeholders.
- Emergency power.

Seasonal Sanitary Sewer Collections Challenges

- Increase in sewer jetting to avoid odor issues caused by low flow in the summer months.
- Since the initiation of our Roach Control Program, the collection crew has experienced fewer issues with opening manholes this summer.

Seasonal Laboratory Challenges

- Increase in WQ analysis (i.e., perchlorate, nitrate, bacteriological analysis) due to more wells that are online.

Seasonal WWTP Operations/Maintenance Challenges

- Biological and chemical reactions are impacted by changes in the summer months. Examples include:
 - Microorganisms grow at a faster rate and balancing these concentrations is key for proper treatment in aeration basins;
 - Lower flow in summertime due to vacations and lack of rainfall. This causes our ammonia levels to rise. Lower flows = higher ammonia concentrations. Challenges of blowers and diffusers to combat high levels of ammonia.
 - Increase of biological activity and reproduction rates in our mesophilic digesters. Operations of solids handling facility is increased due to higher wasting rates of solids from secondary processes.
- Abnormal flare shutdowns after hours due to temperature oscillations. Different pressure zones in the landfill cause this to happen (e.g., barometric pressure).
- Recycled water demand increases. Mountain View Power Plant and irrigation customers use 2-3 times the amount of water during summer months.

FY 20/21 Waterline Replacement Project Update

On April 20, City Council awarded a Construction Contract to Tryco General Engineering (Tryco) for the FY 20/21 Waterline Replacement Project. A project location map is provided as Attachment "B". Bids ranging from \$2.025M to \$4.825M were received from ten (10) contractors. Tryco submitted the lowest responsive bid of \$2,025,170, and will replace approximately two (2) miles of aging waterlines before July 2021. Contract Change Orders

totaling approximately \$50,000 have been authorized since the project began. The FY 20/21 Water Project budget includes approximately \$2.5M for this project.

PMP 2020 Update

On March 9, a Request For Bids was issued for construction of the FY 20/21 Pavement Management Project (PMP). Soon after, I became aware of a potential contracting issue that could significantly impact this, and other Capital Improvement Projects (CIP). The RFB was rescinded on April 14 to provide staff the opportunity to consider responsible revisions to our procurement and contracting procedures that are in the City's best interest. We intend to combine the FY 20/21 and FY 21/22 PMPs into a single project, and will issue a new RFB in late-July or early-August. City Council will consider a Construction Contract recommendation in September, and the project will be completed in spring 2022. A project location map is provided as Attachment "C".

2021 Q3 Capital Improvement Project Update

The MUPWC is charged with, among other things, "*annually reviewing the City CIP under the purview of the Public Works and Municipal Utilities Departments*" (Municipal Code 2.38.030). However, during the December 7, 2020 MUPWC meeting, the Commission asked the MUED staff to provide quarterly CIP updates. A summary and status of CIP projects is provided in Attachment "D".

As you know, the FY 21/22 CIP delivery schedule is aggressive, and success requires thoughtful project coordination and planning. To meet this obligation, MUED issued several RFBs and developed Sole Source Waiver recommendations for City Council consideration on June 15, which is the first meeting after approval of the FY 21/22 Operating Budget. Procurement documents emphasized that contract awards are contingent on FY 21/22 budget appropriations. These projects include:

1. Multi-Year Well Rehabilitation & Booster Pump Replacements – Five (5) potable water wells, two (2) non-potable water wells, and two (2) booster pumps will be rehabilitated in FY 21/22 through a single task order. Additional task orders will be issued in each of the next two (2) fiscal years through contract extensions to rehabilitate thirteen (13) more wells.
2. Water Meter Replacements – A Sole Source Waiver recommendation has been developed to purchase potable and non-potable water meters through Ferguson Waterworks, the exclusive west coast distributor for Neptune water meters. Ferguson will supply and replace all non-potable water meters, and approximately twenty percent (20%) of the potable water meters within our service area. They will also replace meter pit lids with new lids fitted with Automated Meter Infrastructure (AMI) antennas.
3. Water Infrastructure Condition, Seismic, & Structural Assessment – A kick off meeting was held on April 1 with Brady & Associates (Brady). Since then, Brady has completed its assessment of the Hinckley WTP raw water transmission line. This line is in excellent condition, and Brady recommends no short-term rehabilitation or replacements. The 5-

Year CIP includes \$100K for engineering and \$2M for replacement of this line, that will now remain in the Water Fund. This project is on-schedule and on-budget. Brady has prioritized assessment of the Sunset Reservoir.

4. Sunset Reservoir/Recycled Water Reservoir Engineering – A scope of work has been developed to engineer these three (3) reservoirs, with separate Plan, Specification, and Estimate (PS&E) packages. A Request For Proposals will be issued when Brady completes the Sunset Reservoir condition, seismic, and structural assessment.
5. Tate WTP PLC Controller – A Sole Source Waiver recommendation has been developed to hire Tesco Controls (Tesco), who completed the first half of this project in FY 20/21.

Procurement of the remaining FY 21/22 CIP work will occur within the next few months. A couple of these projects (Hinckley WTP Sludge Press, Tank Mixer Installations) are relatively simple to procure. The final phase of our Water System SCADA Project is currently being designed, and implementation will follow soon after. The Tate WTP Transmission Line Replacement Project engineering scope of work will have been developed, and we intend to issue a RFP soon. The Well Perchlorate Treatment Evaluation scope of work will be developed soon. The FY 21/22 Waterline Replacement Project is being engineered in-house, and the construction phase will bid in winter 2021.

Utility Master Plan Updates

Wastewater

Dudek has completed the hydraulic model for the sewer system and is currently working on edits and corrections. Calibration of the model includes adding average daily sewage flow and peak wet weather flow scenarios, including the sewer loads for the Transit Village and Canyon Ranch, and fixing pipe inverts throughout the City. Since the WWTP influent flow meter caps at 10 MGD, Dudek had to create a calibration curve for the peak wet weather flow (approved by WWTP employees). As-builts for nineteen (19) pipelines were recently shared with Dudek to help fix the pipe inverts throughout the model. MUED staff continues to provide requested data to Dudek for the WWTP evaluation phase of the Master Plan, including the Parsons Condition Assessment and the Redlands General Plan. Drafting the Master Plan document has begun.

Potable & Non-Potable Water

The original Michael Baker International (MBI) Project Manager recently resigned his position with the firm, which caused the project to fall behind schedule by approximately eight (8) weeks. MUED staff recently met with the new MBI team to get the project back on schedule, and the original project schedule is still valid. MBI has developed a hydraulic base model, and calibration based on field-measured pressures and flows will begin soon. MUED continues to support MBI with requested information, including characteristics of specific water facilities.

Wastewater Treatment Plant Project Update



As you know, Phase 1A of the WWTP Rehabilitation Project was successfully completed and accepted in November 2020. GSE Construction Company, Inc. was awarded a contract to construct Phase 1B of the Project in November 2020, which includes furnishing and/or installation of the following equipment:

- Fine Screens and Associated Equipment: Removes objects to prevent damage to the newly installed MBR filters;
- Ejector Priming System Upgrades: Removes air from the permeate vessel to prevent air locking of pumps;
- Scour Blowers and Associated Equipment: Creates air scouring, which provided premium efficiency and cost savings to the City. The blowers operate on a 24-hour basis, producing scour air that backwashes the filter media;
- Digester Boilers and Heat Exchangers: Maintains proper temperature for bacteria to decompose sewage sludge and produce digester gas;
- Gas Conditioning System: Cleans and conditions the gas to burn cleaner in the boilers to meet air quality regulations.

Several Change Orders have been approved primarily due to unmapped subsurface utility conflicts. An additional Change Order will be approved soon to add a recycled water booster pump station to provide adequate water pressure and flow for the fine screens.

Condition, Seismic, Structural Assessment Update

Brady continues to evaluate and assess our critical water infrastructure, and has developed an “assessment scoring matrix” modeled after the A.S.C.E. infrastructure report card methodology. This project has already reduced our 5-year Water CIP costs by \$2.1M by eliminating the need to replace the Hinckley WTP raw water transmission line. Brady has prioritized assessment of the Sunset Reservoir to provide the assessment data and recommendations for inclusion in the Sunset Reservoir and Recycled Water Reservoir Engineering RFP. MUED recently submitted a CalOES grant application that will pay for this assessment in its entirety if awarded.

As always, feel free to contact me anytime to discuss MUED issues, programs, projects, or concerns.

John R. Harris

jharris@cityofredlands.org

(909) 725-1963

Attachments:

- A. Utility Production Summary
- B. FY 20/21 Waterline Replacement Project Location Map
- C. FY 20/21 Street Resurfacing Project Location Map
- D. CIP Status Summary
- E. April 12 Groundwater Council Meeting Agenda



WATER PRODUCTION & SANITARY SEWER TREATMENT DATA & ANALYSIS

POTABLE WATER PRODUCTION					
MONTH	2018 (Acre-Feet)	2019 (Acre-Feet)	2020 (Acre-Feet)	2021 (Acre- Feet)	2018-2020 AVG (Ac-Ft)
JANUARY	1331.2	1082.2	1246.2	1384.9	1219.9
FEBRUARY	1383.8	743.0	1486.1	1210.9	1204.3
MARCH	1125.6	986.2	1084.2	1350.5	1065.3
APRIL	1858.8	1901.7	1230.1	1919.4	1663.5
MAY	2032.1	1702.2	2346.2	0	2026.8
JUNE	2381.2	2315.1	2505.3	0	2400.5
JULY	2824.0	2742.3	2834.2	0	2800.2
AUGUST	2841.8	2837.5	2972.0	0	2883.8
SEPTEMBER	2530.4	2613.1	2708.3	0	2617.3
OCTOBER	2099.2	2329.2	2492.8	0	2307.1
NOVEMBER	1834.7	1786.9	1848.1	0	1823.2
DECEMBER	1199.0	935.7	1710.6	0	1281.8
TOTAL	23441.8	21975.1	24464.1	5865.7	23293.7

2020 vs 2019 111%
 2020 vs 2018 104%
 2020 vs (2019 & 2018 Average) 108%

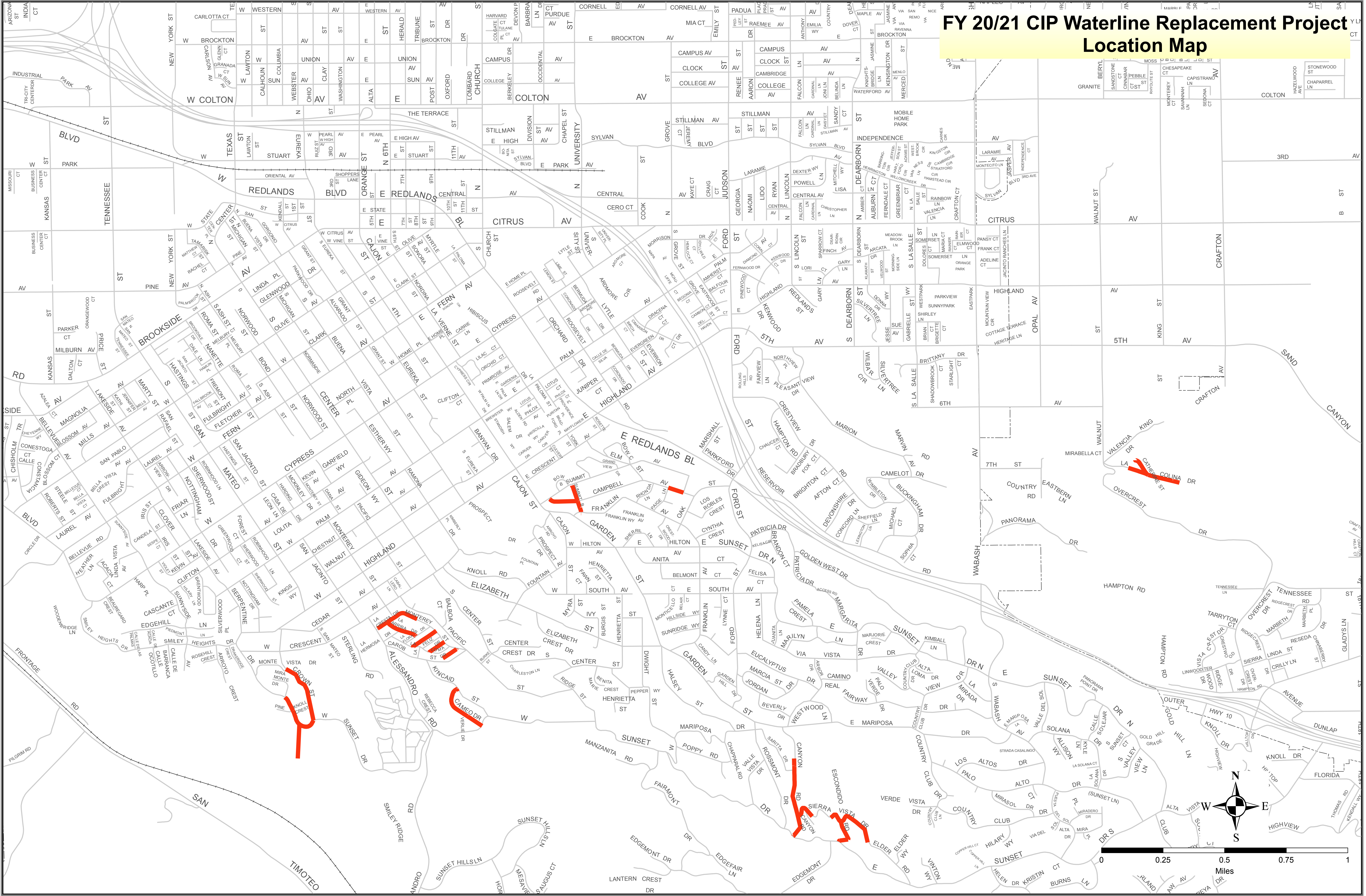
NON-POTABLE WATER PRODUCTION					
MONTH	2018 (Acre-Feet)	2019 (Acre-Feet)	2020 (Acre-Feet)	2021 (Acre- Feet)	2018-2020 AVG (Ac-Ft)
JANUARY	77.9	44.5	55.0	121.5	59.1
FEBRUARY	100.1	58.7	72.8	79.3	77.2
MARCH	42.7	48.3	56.8	143.3	49.3
APRIL	178.4	131.6	63.3	177.9	124.4
MAY	197.4	114.0	167.8	0	159.7
JUNE	206.1	270.9	208.1	0	228.4
JULY	228.1	264.0	243.7	0	245.3
AUGUST	269.3	250.1	244.7	0	254.7
SEPTEMBER	275.1	250.6	214.9	0	246.9
OCTOBER	202.7	160.2	209.4	0	190.8
NOVEMBER	187.6	142.1	144.2	0	158.0
DECEMBER	52.3	24.8	147.0	0	74.7
TOTAL	2017.7	1759.8	1680.7	522.0	1819.4

2020 vs 2019 96%
 2020 vs 2018 83%
 2020 vs (2019 & 2018 Average) 89%

SANITARY SEWER TREATMENT					
MONTH	2018 (MG)	2019 (MG)	2020 (MG)	2021 (MG)	2018-2020 AVG (MG)
JANUARY	180.39	189.94	180.03	193.32	183.5
FEBRUARY	157.42	175.27	168.89	136.57	167.2
MARCH	177.09	186.73	178.93	175.96	180.9
APRIL	159.91	175.39	166.30	178.43	167.2
MAY	164.76	179.86	186.78	0	177.1
JUNE	163.72	172.33	189.59	0	175.2
JULY	174.92	175.84	204.60	0	185.1
AUGUST	192.10	180.85	179.60	0	184.2
SEPTEMBER	178.02	177.91	181.18	0	179.0
OCTOBER	189.03	181.97	182.59	0	184.5
NOVEMBER	176.51	175.38	187.08	0	179.7
DECEMBER	180.63	183.54	189.88	0	184.7
TOTAL	2094.50	2155.01	2195.45	684.3	2148.3

2020 vs 2019 102%
 2020 vs 2018 105%
 2020 vs (2019 & 2018 Average) 103%

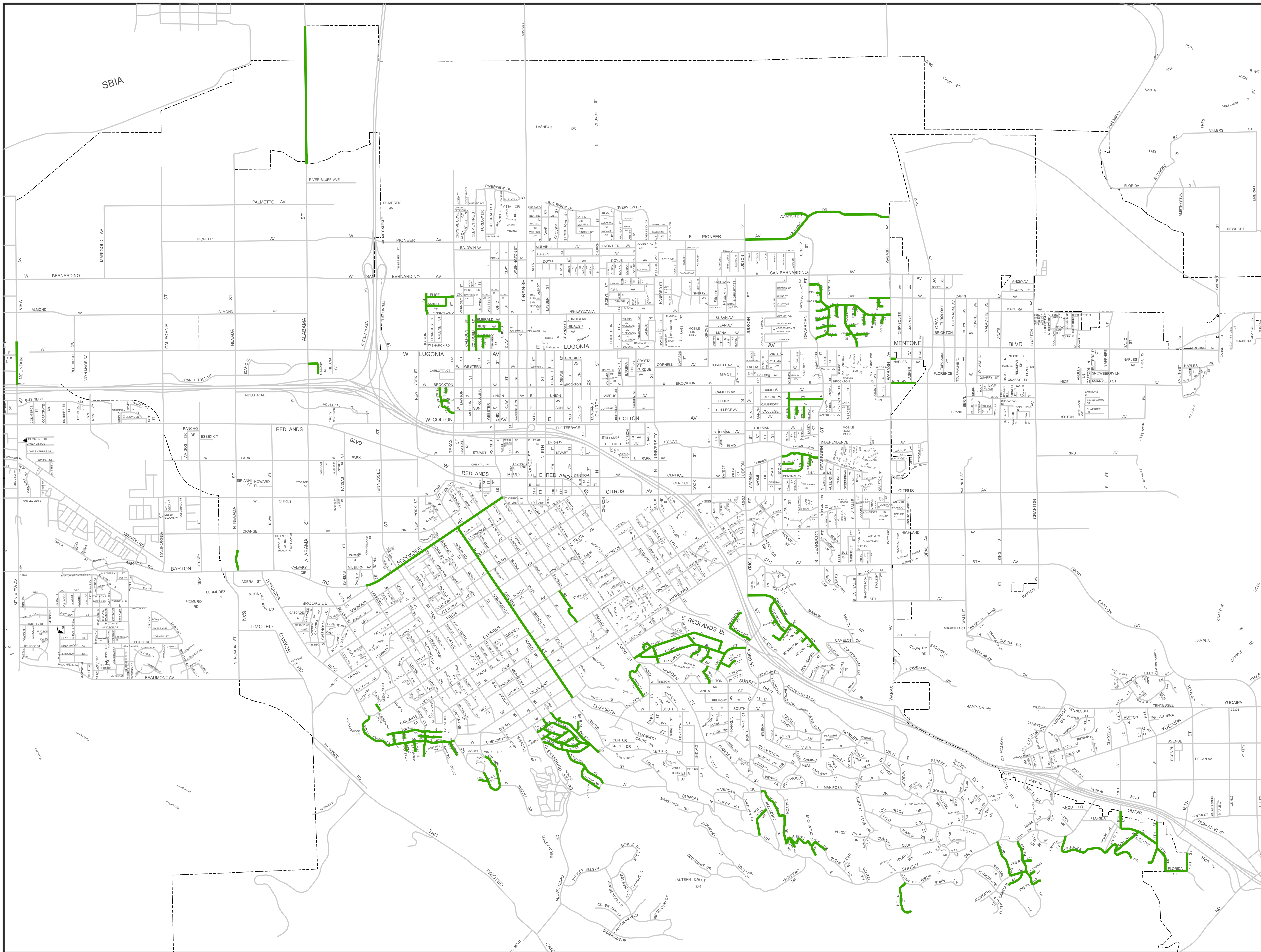
FY 20/21 CIP Waterline Replacement Project Location Map



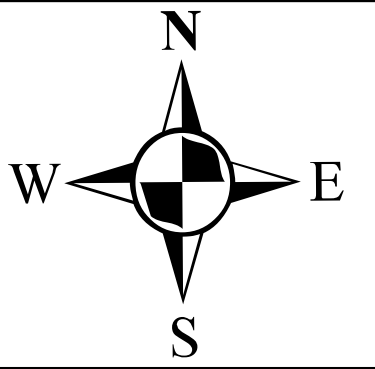
PMP 2020 & 2021 Resurfacing Project

Legend

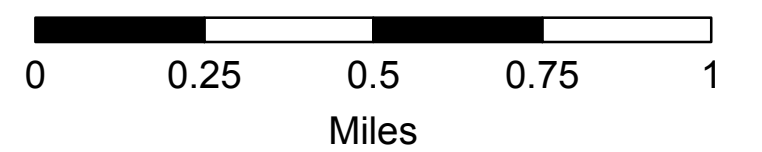
 PMP Street Resurfacing



This map was produced by the City of Redlands, Geographic Information System. The City of Redlands assumes no warranty or legal responsibility for the information contained on this map. The data used to generate this map is dynamic in nature, therefore the information shown may or may not be the most current.



Scale



May 20, 2021

PMP Map.mxd

MUNICIPAL UTILITIES AND ENGINEERING DEPARTMENT
CIP PROJECTS LIST

PLANNING		Org Key	GL	Project Name	Project Phase	Progress	Consultant/Contractor	PM/Engineer	Current Budget
P1	PMP/GF	211910		Alley Paving Improvements	PLANNING	5%		Elva	\$1,300,000.00
P2	PMP	211910		SBCounty/Mentone/Redlands Paving Project	PLANNING	5%		Goutam	\$78,750.00
P3	GENERAL FUND	101400		Citywide Sidewalk and ADA Ramp Replacement Project	PLANNING	5%		Elva	\$500,000.00
P4	ARTERIAL	252400		Citrus Avenue Widening Project	PLANNING	2%		Elva	\$700,000.00
P5	TRAFFIC SIGNAL	253400		Traffic Signal Improvements (Brockton/University)	PLANNING	2%		Elva	\$600,000.00
P6	WATER	501910		2021 CIP Water Pipeline Replacement	PLANNING	5%		Gerard	\$4,500,000.00
P7	WATER	501910	501006	Water System SCADA Design & Integration - Phase II	PLANNING	95%		Goutam	\$3,900,000.00
P8	WATER	501910		Annual Citywide Potable Water Meter Replacements	PLANNING	2%		Kevin	\$1,815,000.00
P9	WATER	501910	501005	Booster #2310 Replacement	PLANNING	2%		Jason/Veronica	\$50,000.00
P10	WATER	501910	501005	Booster #2311 Replacement	PLANNING	2%		Jason/Veronica	\$50,000.00
P11	WATER	501910	501005	East Lugonia #3 Well Rehabilitation	PLANNING	2%		Jason/Veronica	\$80,000.00
P12	WATER	501910	501005	East Lugonia #6 Well Rehabilitation	PLANNING	2%		Jason/Veronica	\$80,000.00
P13	WATER	501910	501005	Church St Well Rehabilitation	PLANNING	2%		Jason/Veronica	\$80,000.00
P14	WATER	501910	501005	Airport #1 Well Rehabilitation	PLANNING	2%		Jason/Veronica	\$120,000.00
P15	WATER	501910	501005	N. Orange #1 Well Rehabilitation	PLANNING	2%		Jason/Veronica	\$120,000.00
P16	NON-POTABLE	531910		Well 31A Rehabilitation	PLANNING	2%		Jason/Veronica	\$250,000.00
P17	NON-POTABLE	531910		Well 32 Rehabilitation	PLANNING	2%		Jason/Veronica	\$100,000.00
P18	WATER	501910		Tank Mixers Instillation	PLANNING	2%		Paul	\$100,000.00
P19	WATER	501910		Hinckley WTP Transmission Line Replacement	PLANNING	1%		Paul	\$100,000.00
P20	WATER	501910	501009	Hinckley Sludge Press	PLANNING	1%		Paul	\$300,000.00
P21	WATER	501910		Tate WTP Transmission Line Assessment	PLANNING	1%		Paul	\$100,000.00
P22	WATER	501910		Tate PLC Replacement	PLANNING	1%		Paul	\$400,000.00
P23	WATER	501910	501007	Agate Well #2 Rehabilitation	PLANNING	1%		Kevin/Jason	\$175,000.00
P24	WATER	501910		Wellhead Perchlorate Treatment Evaluation	PLANNING	1%		Paul	\$150,000.00
P25	WASTEWATER	521910		2021 CIP Sewer Pipeline Replacement	PLANNING	65%		Johana	\$1,000,000.00
P26	WASTEWATER	521910		Alabama Septage Pond Remediation	PLANNING	5%		Johana	\$240,000.00
P27	WASTEWATER	521910		WWTP Drying bed lechate Remediation	PLANNING	1%		Johana	\$250,000.00
P28	WASTEWATER	521910		Storm Water Hillside Stabilization & Parking Lot Rehab	PLANNING	1%		Kevin	\$100,000.00
P29	WASTEWATER	521910		WWTP Laboratory Instruments	PLANNING	1%		Kevin	\$125,000.00
P30	NON-POTABLE	531910		Recycled Water Reservoirs	PLANNING	1%		Kevin	\$180,000.00
P31	NON-POTABLE	531910		Citywide Non-Potable Water Meter Replacement	PLANNING	1%		Kevin	\$93,000.00
P32	GENERAL FUND	101400		Citywide Storm Drain Improvements Project	PLANNING	1%		Gerard	\$500,000.00
P33	WATER CONSV	501910	501002	Brookside Median Landscape Improvements	PLANNING	1%		Cecilia	\$240,000.00
P34	WATER CONSV	501910	501027	Smart Irrigation Controllers for City Facilities	PLANNING	1%		Cecilia	\$100,000.00
P35	WATER	501910	501022	Hinckley/Tate Roof Repair Project	PLANNING	1%		Paul	\$100,000.00
P36	WATER	501910	501030	Hinckley WTP Safety Fencing Project	PLANNING	1%		Paul	\$40,000.00
P37	WATER	501910	501028	Reservoir Sites Fixed Generators (Tx. St. / C.C. / 5th Ave.)	PLANNING	1%		Paul	\$750,000.00
P38	WATER	501910	501003	Sunset Reservoir Recoating & Improvement Project	PLANNING	1%		Kevin	\$700,000.00
P39	CDBG	200164	F164001	18/19 CDBG Civic Center ADA Improvements	PLANNING	5%		Veronica	\$94,525.00
P40	WATER	501910	501029	Tate ACH Tank Replacement	PLANNING	5%		Paul	\$25,000.00
P41	WATER	501910	501016	Tate WTP Clarifier Recoating	PLANNING	5%		Paul	\$500,000.00
Planning Projects - Cost Summary									\$20,686,275.00

MUNICIPAL UTILITIES AND ENGINEERING DEPARTMENT
CIP PROJECTS LIST

DESIGN		Org Key	GL	Project Name	Project Phase	Progress	Consultant/Contractor	PM/Engineer	Current Budget
D1	PMP	211910	211002/3	PMP 2021 Street Resurfacing Project	DESIGN	75%		Gerard	\$8,901,966.00
D2	HSIP C8	240400	F400001	HSIP Cycle 8 - Signal Preemption Project	DESIGN	70%	AGA Engineers, Inc.	Veronica	\$1,173,791.00
D3	HSIP C9	240400	F400003	HSIP Cycle 9 - Pedestrian In-Roadway Lights	DESIGN	65%		Veronica	\$250,000.00
D4	WATER	501910	501004	Hinckley WTP Backup Generator Replacement	DESIGN	50%		Paul	\$140,000.00
D5	ATP Cycle 2	240400	C400005	ATP Highland/Redlands Regional Connector - Orange St	DESIGN	75%	KOA Consultants	Veronica	\$1,532,843.00
D6	SBCTA	254400	254002	I-10/Alabama Street Improvement (\$15,150,600)	DESIGN	100%	SBCTA/Advanced Civil Tech	Ross/Goutam	\$2,506,921.00
D7	ATP Cycle 3	240400	C400007	ATP East Valley Corridor Bike Rte Interconnect - Alabama	DESIGN	80%	KOA Consultants	Veronica	\$2,112,000.00
D8	TDA	240400	S241001	Orange Blossom Trail - Phase 3	DESIGN	100%		Gerard	\$918,722.00
D9	HSIP C8	240400	F400003	HSIP Cycle 8 - Pedestrian Heads Project	DESIGN	95%		Veronica	\$260,000.00
Design Projects - Cost Summary									\$17,796,243.00
BID & AWARD		Org Key	GL	Project Name	Project Phase	Progress	Consultant/Contractor	PM/Engineer	Current Budget
Bid & Award Project - Cost Summary									\$0.00
CONSTRUCTION		Org Key	GL	Project Name	Project Phase	Progress	Contractor	PM/Inspector	Contract Amount
C1	SBCTA	254400	254001	I-10/University Interchange Project (\$5,812,935)	CONST	10%	SBCTA/ADVANTEC/SEMA	Kyle/Darren	\$1,234,260.00
C2	WATER	501910	501031	2020 CIP Water Pipeline Replacement	CONST	15%	Tryco General Engineering	Gerard/Daniel	\$2,025,170.00
C3	WASTEWATER	521910	521006	MBR & Digester Improvements Project- Phase 1B	CONST	40%	GSE Construction Co. Inc.	Goutam/Darren	\$6,128,100.00
C4	WATER	501910	501006	Water System SCADA Design & Integration	CONST	75%	Baker Electric, Inc.	Goutam/Paul	\$3,050,609.00
C5	WATER	501910	501023	Water Meter Replacement Project	CONST	95%	Golden Meters Services, Inc	Kyle/Darren	\$124,650.00
C6	WATER	501910	71060	2020 Citywide Pavement Repair for Water Projects	CONST	30%	Tryco General Engineering	Goutam/Daniel	\$429,020.00
Construction Projects - Cost Summary									\$12,991,809.00
Project Total Dollars									\$51,474,327.00



<http://www.sbgroundwatercouncil.org/>

GROUNDWATER COUNCIL

ZOOM MEETING INFORMATION

<https://sbvmwd.zoom.us/j/85651546434>

Meeting ID: 856 5154 6434

Dial in at:

+1 669 900 6833 US



www.sbgroundwatercouncil.org

GROUNDWATER COUNCIL MEETING AGENDA

MONDAY, APRIL 12, 2021 – 10:00 AM

CALL TO ORDER

ROLL CALL FOR QUORUM

Bear Valley Mutual Water Company (0), City of Colton (3), City of Loma Linda (9), City of Rialto (12), East Valley Water District (9), Fontana Union Water Company (3), Loma Linda University (1), San Bernardino Municipal Water Department (54), San Bernardino Valley Municipal Water District (1), San Bernardino Valley Water Conservation District (0), West Valley Water District (8), Yucaipa Valley Water District (0)

INTRODUCTIONS

1. APPROVAL OF MINUTES

- 1.1 *January 11, 2021, Meeting (Page 3)*
[Minutes 011121](#)

2. NEW BUSINESS

- 2.1 *Discuss Full Participation Plan - SBVWCD Groundwater Charge Component Approach (Page 7)*
[Sustainability - Replenishment Component for Groundwater Charge](#)
 - 2.1a *San Bernardino County Consideration of Groundwater Council Membership*
 - 2.1b *Southern California Edison Consideration of Groundwater Council Membership*
- 2.2 *Discussion of WVWD Credit for Recharged Water (Page 41)*
[Lytle Creek Recharge Operations - WVWD](#)
- 2.3 *Consider Re-adoption of FY21-22 EAM Budget (Page 48)*
[FY21-22 EAM Budget - April 2021](#)
- 2.4 *Update on State Water Project Supplies for 2021*

3. OLD BUSINESS

4. OTHER BUSINESS

4.1 Report from the Groundwater Council Budget Committee

4.2 Report from the Groundwater Council Operations Committee

5. SET DATE FOR NEXT MEETING

The next regularly scheduled Groundwater Council meeting will be on June 14, 2021, at 10:00am.

6. ADJOURNMENT

**MINUTES
OF
THE
GROUNDWATER COUNCIL**

January 11, 2021

Registered Guests:

Daniel Cozad, San Bernardino Valley Water Conservation District
John Mura, East Valley Water District
Jeff Noelte, East Valley Water District
Tom Crowley, City of Rialto
Miguel Guerrero, San Bernardino Municipal Water Department
Steve Miller, San Bernardino Municipal Water Department
Wen Huang, San Bernardino Valley Municipal Water District
Bob Tincher, San Bernardino Valley Municipal Water District
Matthew Howard, San Bernardino Valley Municipal Water District
Adekunle Ojo, San Bernardino Valley Municipal Water District
Cindy Saks, San Bernardino Valley Municipal Water District
Kristeen Farlow, San Bernardino Valley Municipal Water District
Melissa Zoba, San Bernardino Valley Municipal Water District
Sam Fuller, Bear Valley Mutual Water Company
Ryan Shaw, Western Municipal Water District
Sam Fuller, Bear Valley Mutual Water Company
Jarb Thaipejr, City of Loma Linda
Russ Handy, City of Loma Linda
Cecilia Griego, City of Redlands
John Harris, City of Redlands
Katelyn Scholte, San Bernardino Valley Water Conservation District
Linda Jadeski, West Valley Water District
Van Jew, West Valley Water District
Joseph Zoba, Yucaipa Valley Water District
Jennifer Ares, Yucaipa Valley Water District
Don Hough, Riverside-Highland Water Company
Michael Plinski, City of Riverside

Greg Herzog, City of Riverside

Mike Cory, City of Colton

The Groundwater Council meeting was called to order by Tom Crowley at 10:05 a.m. by teleconference.

Roll Call was taken and there was a quorum for voting purposes. The meeting proceeded with the following agenda items.

Agenda Item 1. Approval of Minutes.

1. October 12, 2020, Meeting.

Bob Tincher moved to approve the minutes of the October 12, 2020, Groundwater Council meeting. Jarb Thaipejr seconded. The motion was adopted unanimously by a non-roll-call vote.

Agenda Item 2. New Business.

1. Review Preliminary Budget

Daniel Cozad present the revised preliminary Equitable Allocation Model (EAM) budget to the Groundwater Council that considered the changes and correction made during the October 12, 2020 Groundwater Council meeting. Katelyn Scholte mentioned that the changes made incorporated the San Gabriel Valley Water District data into the Fontana Union Water Company data for FY20-21 and FY21-22 budget. The other adjustment was made to the budget sheet in the EAM to make billing more efficient for San Bernardino Valley Municipal Water District. Bob Tincher suggested of adding a sheet to the EAM showing the actual amount of funds and the actual amount of water being purchased by the Groundwater Council, which would not change the allocation to any agency. The recommendation for this agenda item is to approve the FY21-22 budget for the Groundwater Council as published with the addition of a sheet of actual billings and participants.

Daniel Cozad moved approval to approve the Groundwater Council budget for FY21-22 with the recommended additional sheets. Miguel Guerrero seconded. The motion was adopted unanimously by a non-roll call vote.

2. Election of Officers

a. Groundwater Council Officers (President, Vice President, and Secretary)

President Crowley went over the Groundwater Council agreement and stated that the President, Vice President, and Secretary were selected at the first Groundwater Council meeting. Currently, Tom Crowley serves as President, Jarb Thaipejr serves as Vice-President, and Doug Headrick

served as Secretary. President Crowley opened the election of the officers up to the Groundwater Council for discussion. Jarb Thaipejr nominated Tom Crowley to serve as president without any other nominations or opposition from the Groundwater Council, Tom Crowley remains the Groundwater Council President. Daniel Cozad nominated Jarb Thaipejr to serve as Vice-President without any other nominations or opposition from the Groundwater Council, Jarb Thaipejr remains the Groundwater Council Vice-President. Jarb Thaipejr nominated Bob Tincher to serve as Secretary without any other nominations or opposition from the Groundwater Council, Bob Tincher is elected to the Groundwater Council Secretary.

b. Budget Committee

The current officers of the Budget Committee are Daniel Cozad, Miguel Guerrero, and John Mura. Daniel stated that all the three positions on the Budget Committee are open for nominations. Miguel Guerrero nominated Daniel Cozad to serve as the incumbent, and Jarb Thaipejr nominated John Mura and Miguel Guerrero to maintain their positions on the Budget Committee, without any other nominations and no opposition from the Groundwater Council, Daniel Cozad, John Mura and Miguel Guerrero remain the officers of the Budget Committee.

Reports

1. Update on Plan to Achieve Full Participation in the Groundwater Council

Daniel Cozad provided a report on the plan to achieve full participation in the Groundwater Council. Daniel went over the three questions listed in the staff report for reach full participation. Daniel went over the table included in the staff report of Groundwater Council non-members with production above 300 acre-feet per year which include commercial and agriculture producers. Daniel explained that each question in detail to the Groundwater Council and is planning to present these options to the GC Budget Committee and to the San Bernardino Valley Conservation District (SBVWCD). Bob Tincher asked if it was possible as an incentive to join the Groundwater Council was to provide a payment plan over the course of 10-15 years. Daniel stated that he thinks they do not need much time to spread the back costs of the Groundwater Council. There was discussion between Jarb Thaipejr and Cecilia Griego about looking at active well drilling permits, and Bob Tincher explained that the San Bernardino Basin is adjudicated through the Western-San Bernardino Wastermaster and that this is more of a Watermaster issue. Daniel will be developing a Plan to produce an increased rate through the Budget Committee and is planning to release the increase in the rate to the SBVWCD Board in February 2021 with planned discussion through April 2021.

Agenda Item 3. Other Business.

Bob Tincher stated that San Bernardino Valley Municipal Water District is working with the City of Redlands and will reach out to Terrace Water Company and Muscoy Mutual Water Company. Bob Tincher and Daniel Cozad will connect after the meeting to discuss who to reach out to first. Daniel is going to reach out to Southern California Edison.

The next regularly scheduled Groundwater Council Meeting will be on February 8, 2021 at 10:00 a.m.

Agenda Item 4. Adjournment.

There being no further business, Chairman Crowley adjourned the meeting 10:59 a.m.

<p>APPROVAL CERTIFICATION I hereby certify to approval of the foregoing Minutes of the Groundwater Council.</p> <hr/> <p>Secretary Date _____</p>

Respectfully submitted,

Matthew Howard
Water Resources Senior Project Manager



Groundwater Council Participation Plan “Other Producers”

An Equitable Pooled Approach to Managing
Groundwater for Sustainability

What is the Groundwater Council?

The Groundwater Council is a historic step towards collaborative water management

- Participating members (GW Producers) contribute water and/or funding to purchase imported water that will be used to restore and maintain the groundwater basin at sustainable levels
- Voluntarily initiated and implemented
- Producers contribute funding, water, and operations and maintenance assistance to ensure a sustainable water source
- Producers benefit from a sustainable water source at affordable pricing, reducing dependency on spot market highs in times of drought

Agenda for Producers Meeting

1. Introductions
2. Background for the Sustainability/Replenishment component of the Groundwater Charge
3. Impacts to producers
4. Phase-in period options
5. Rate process next steps
6. Questions and other issues

Why is collaborative water management important?

- Traditional methods of trapping local rainfall and snowmelt are no longer enough to serve the region's growing water needs
- Long-term drought has caused a general decline in the groundwater basin.
- While other parts of the state faced groundwater management mandates under the Groundwater Sustainability Act of 2014, members of the Groundwater Council work together voluntarily...and keep control local
- Ensures a sustainable source of groundwater for the future and reduces costs by eliminating the need to purchase imported water on the "spot market" at much higher prices

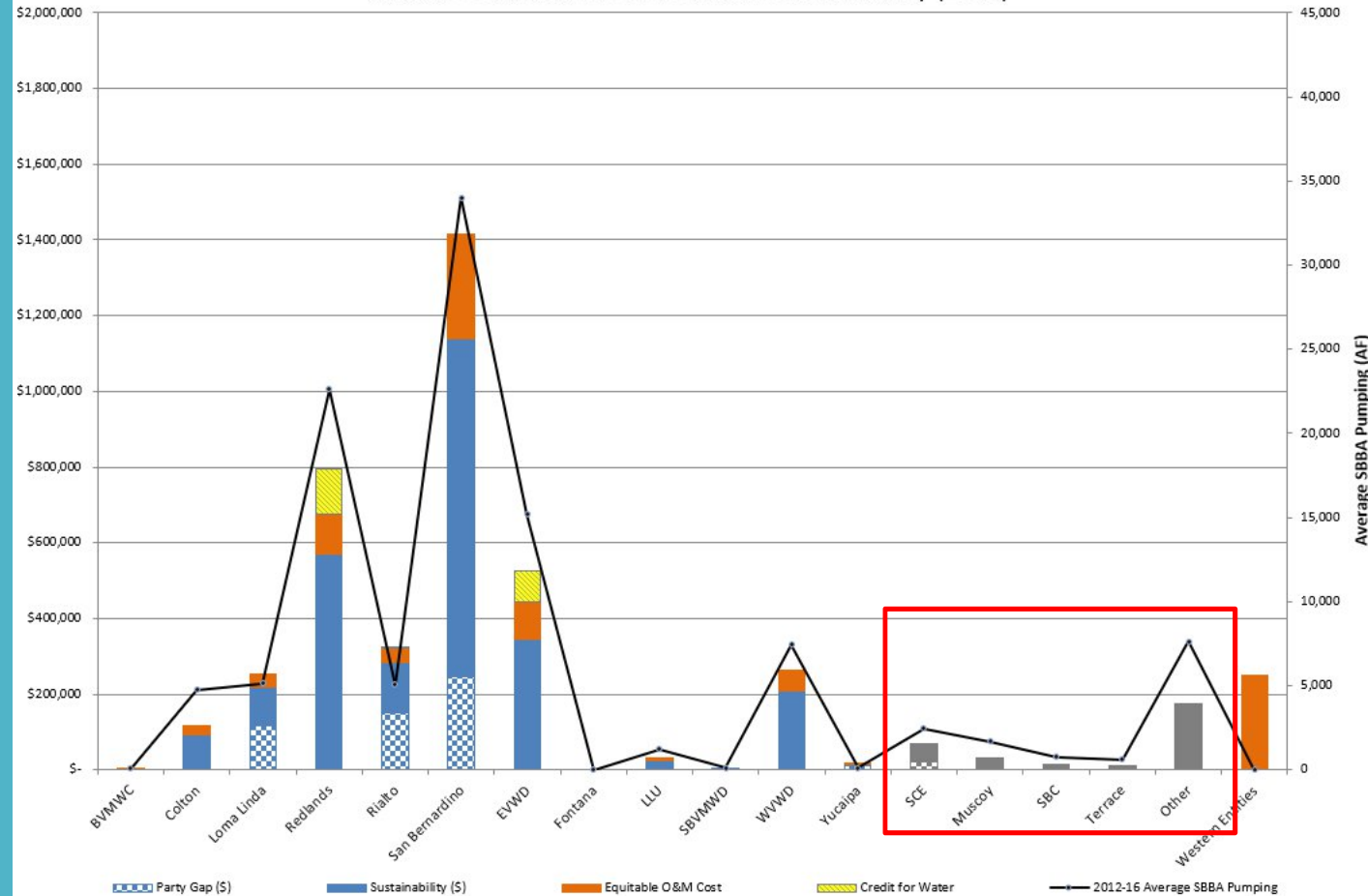
Who is the Groundwater Council?

Members

- Bear Valley Mutual Water Company
- East Valley Water District
- San Bernardino Municipal Water Department
- Fontana Water Company
- Yucaipa Valley Water District
- West Valley Water District
- Cities of Colton, Loma Linda, Redlands, and Rialto
- San Bernardino Valley Municipal Water District
- San Bernardino Valley Water Conservation District

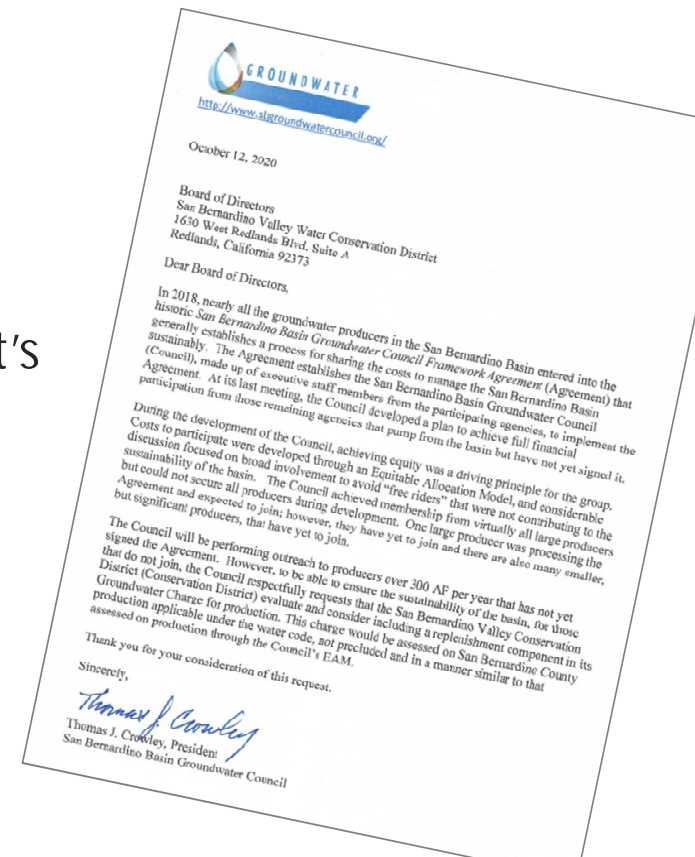
How much do large basin producers in the GC pay for Replenishment / Sustainability?

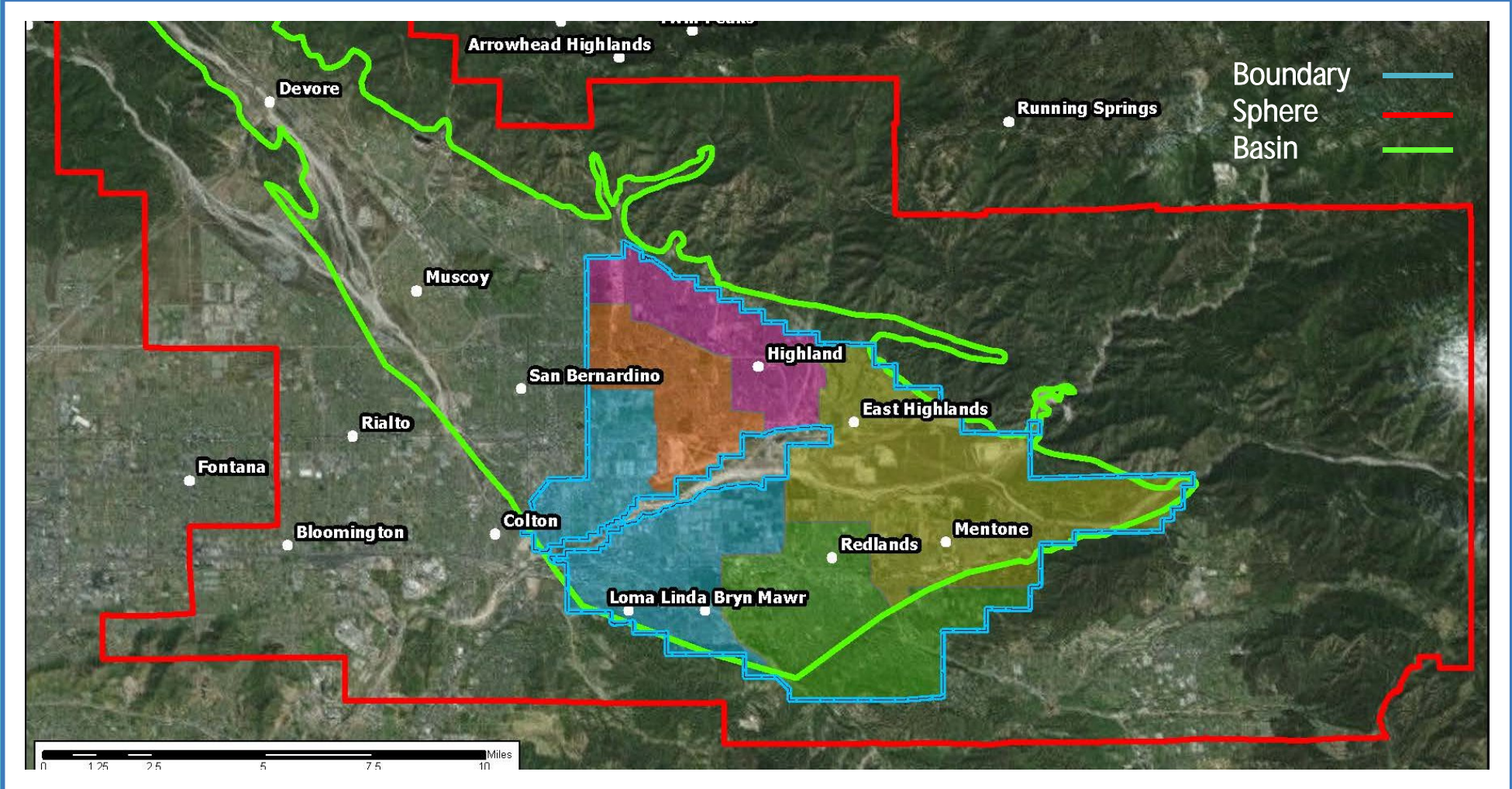
BTAC Recommended Equitable Cost-Sharing Method for Sustainability in the SBBA
Annual O&M and SWP for Ultimate Sustainability (2040)



Why is the District considering a Replenishment component?

The Groundwater Council requested the Board consider the development of a rate component of the existing Groundwater Charge to achieve equity and fairly allocate costs with the least administrative burden for producers within the District's boundary.





The Five-Year Plan

Initial 3 Years: The Groundwater Council established and implemented fair sharing of costs using an Equitable Allocation Model (EAM), to sustainably manage the San Bernardino Basin

- Achieving equity was a driving principle for the group. Costs to participate were developed through considerable discussion on all aspects of sustainability, including economic sustainability for small producers.
- A 2017 California Supreme Court ruling stated that Water conservation districts can no longer charge disproportional rates for agricultural and non-agricultural users. Rates must be based on actual costs.

Full Participation - Year 4-5: Smaller producers begin paying their fair share of the Sustainability/ Replenishment costs. To reduce the burden on these producers, the Groundwater Council develops a “pool” for non-council parties within the District Boundary and a phase-in period. Producers outside the District Boundary become members or alternatively pay costs.

The “pool” for non-GC parties within the District Boundary

Closes the fiscal gap in an equitable way as required for compliance with the Water Code & 2017 California Supreme Court Ruling

Reduces financial and time burden for producers

Aligns with current production approach in Groundwater Council charge

Establishes a fair Sustainability/Replenishment Rate and determines how it will be phased-in over time

Groundwater Council Equitable Allocation Budget for FY 2021-22

Agency	Party Gap FY21-2 (AF)	Sustainability FY21-22 (AF)	Total Equitable Water Cost FY21-22 (\$)	Water Corrections for Previous Years (\$)	Total Water Cost with Corrections (\$)	Total Water with Corrections (AF)	Equitable O&M Costs FY21-22 (\$)	O&M Corrections for Previous Years (\$)	Total O&M Cost with Corrections (\$)	Total Party Costs FY21-22 (\$)	Voting Weight 2020-21
Bear Valley Mutual Water Company	-	-	\$ -	\$ -	\$ -	0	\$ 112	\$ -	\$ 112	\$ 112	0.00%
City of Colton	-	597	\$ 70,642	\$ 653	\$ 71,295	602	\$ 22,031	\$ (87)	\$ 21,944	\$ 93,239	3.1%
City of Loma Linda	846	810	\$ 196,040	\$ (304)	\$ 195,736	1653	\$ 35,370	\$ (121)	\$ 35,249	\$ 230,985	7.8%
City of Redlands	-	659	\$ 77,986	\$ (197,069)	\$ (119,082)	-1006	\$ 152,860	\$ (446)	\$ 152,415	\$ 33,332	7.8%
City of Rialto	1,335	1,001	\$ 276,696	\$ (361)	\$ 276,334	2334	\$ 33,954	\$ (127)	\$ 33,827	\$ 310,161	10.4%
City of San Bernardino	2,787	6,762	\$ 1,130,683	\$ (2,987)	\$ 1,127,696	9524	\$ 278,083	\$ (930)	\$ 277,153	\$ 1,404,849	47.3%
East Valley Water District	-	-	\$ -	\$ 3,087	\$ 3,087	26	\$ 91,896	\$ (342)	\$ 91,554	\$ 94,641	3.1%
Fontana Union Water Company	-	723	\$ 85,559	\$ 1,313	\$ 86,872	734	\$ 18,235	\$ 2,288	\$ 20,524	\$ 107,396	3.5%
Loma Linda University	-	170	\$ 20,173	\$ 167	\$ 20,341	172	\$ 7,194	\$ (23)	\$ 7,171	\$ 27,511	0.9%
San Bernardino Valley M.W.D.	-	-	\$ -	\$ 19	\$ 19	0	\$ 11	\$ (8)	\$ 3	\$ 22	0.0%
West Valley Water District	1,670	1,864	\$ 418,429	\$ 1,498	\$ 419,927	3547	\$ 56,364	\$ (199)	\$ 56,165	\$ 476,092	15.9%
Yucaipa Valley Water District	26	18	\$ 5,188	\$ (4)	\$ 5,183	44	\$ 689	\$ (4)	\$ 685	\$ 5,868	0.2%
Total GC Parties:	6,664	12,604	\$ 2,281,396	\$ (193,987)	\$ 2,087,409	17630	\$ 696,800	\$ 0	\$ 696,800	\$ 2,784,209	100%
Mountain View Power Co.	-	286	\$ 33,841	\$ (70)	\$ 33,772	285	#N/A	\$ -	#N/A	\$ 33,772	#N/A
Muscoy Mutual Water Company No. 1	-	266	\$ 31,509	\$ 235	\$ 31,744	268	#N/A	\$ -	#N/A	\$ 31,744	#N/A
San Bernardino County - Facility Management	-	119	\$ 14,035	\$ 105	\$ 14,139	119	#N/A	\$ -	#N/A	\$ 14,139	#N/A
Terrace Water Company	-	63	\$ 7,506	\$ 83	\$ 7,589	64	#N/A	\$ -	#N/A	\$ 7,589	#N/A
Other Inside SBVWCD	-	1,086	\$ 128,593	\$ (5)	\$ 128,588	1086	#N/A	\$ -	#N/A	\$ 128,588	#N/A
Other Outside SBVWCD	-	202	\$ 23,975	\$ (1)	\$ 23,974	202	#N/A	\$ -	#N/A	\$ 23,974	#N/A
San Bernardino Non-Parties Total:	-	2,022	\$ 239,459	\$ 347	\$ 239,806	2025	\$ -	\$ -	\$ -	\$ 239,806	0%
Western Entities Total:	-	-	-	-	-	0	\$ -	-	-	\$ -	0%
Total:	6,664	14,627	\$ 2,520,855	\$ (193,640)	\$ 2,327,214	19656	\$ 696,800	\$ 0	\$ 696,800	\$ 3,024,014	100%

FY2021-2022 Groundwater Council Costs

SBVWCD Sustainability Replenishment Component Approach

To provide a \$/AF Cost required under CWC 76000
the “pool” approach was implemented

Non-GC party under SBVWCD jurisdiction total
divided by the total production of the non-GC parties
for the most recent GC EAM period (2019)

$$\frac{\$128,593}{5,836 ??} = \$22.04/??$$

Estimated Producer Rate based on 2020 Production under Groundwater Assessment

GC Non-Members SBVWCD Boundary	Average 1959-1963 (AF)	Average 2015-2019 (AF)	Jan-Jun 2020 AF	Jul-Dec 2020 AF	Groundwater Replenishment Charge \$22.04/AF	First Year Phase-In 20% of 22.04/AF
AHD LIMITED (DEER PARK)	94	193	12.68	0	\$279	\$56
ARROWHEAD COUNTRY CLUB	631	422	192.44	202.38	\$8,702	\$1,740
BARTON DEVELOPMENT C/O LUCKY FARMS	119	67	0	0	\$0	\$0
BELL H EUGENE	97	1	59.26		\$1,306	\$261
CALVARY CHAPEL OF REDLANDS	0	95	0.19	0.18	\$8	\$2
CANYON RANCH	200	0	0		\$0	\$0
CBC OWNERS ASSOCIATION C/O SCRES	373	128			\$0	\$0
CEMEX CONSTRUCTION MATERIALS PACIFIC, LLC	251	640	417.1	496.4	\$20,134	\$4,027
CRAFTON WATER COMPANY	933	213	48.85		\$1,077	\$215
CRAM-PATTERSON WELL	320	159	46.8	161.2	\$4,584	\$917
DANGERMOND, JACK	263	0	0	0	\$0	\$0
DEPARTMENT OF STATE HOSPITALS - PATTON	1014	4	3.5		\$77	\$15
EAST HIGHLAND RANCH	2933	1			\$0	\$0
FAR WELL	107	48			\$0	\$0
FOX ROTHSCHILD LLP	890	11			\$0	\$0
GAY GROVE	222	62	12.6		\$278	\$56
GLADYSTA WELL & WATER COMPANY	529	29	9.46	19.64	\$641	\$128
GREENSPOT MUTUAL WELL COMPANY	119	148	51.2	104	\$3,421	\$684
GREENSPOT VILLAGE & MARKET PLACE LLC	1397	0			\$0	\$0
GUYETTE, DOUG	28	0			\$0	\$0
HAPPE MUTUAL WELL COMPANY	525	68	29.79		\$657	\$131
INLAND VALLEY DEVELOPMENT AGENCY	5598	0	0	0	\$0	\$0
I. G. GOLFING ENTERPRISES	0	205			\$0	\$0
KANSAS STREET MUTUAL WATER COMPANY	352	0			\$0	\$0
KING STREET MUTUAL WELL COMPANY	358	0	0		\$0	\$0
MENTONE CITRUS GROWERS	588	639	337.2	454.8	\$17,456	\$3,491
MONTE LLC	527	51	45.4	30.24	\$1,667	\$333
MONTECITO MEMORIAL PARK	94	385	255.96		\$5,641	\$1,128
MT . VIEW CEMETERY	190	249	135	147	\$6,215	\$1,243
NATIONAL ORANGE SHOW	135	34	13	27.26	\$887	\$177
NEW ENGLAND WATER COMPANY	0	231	56.23		\$1,239	\$248
PHARAOHS LOST KINGDOM	0	1			\$0	\$0
PIONEER MUTUAL WATER CO	283	21	4	11.4	\$339	\$68
RAMIREZ, J. J.	1783	232	44.62	110.32	\$3,415	\$683
RAUGHT MUTUAL WELL COMPANY	526	198	10.65		\$235	\$47
REDLANDS UNIFIED SCHOOL DISTRICT	459	86	1	64.98	\$1,454	\$291
REDLANDS-BRANSON DEVELOPMENT (BROOKSIDE PLAZA)	0	9	0	0	\$0	\$0
SAN BERNARDINO AVE WATER CO.	344	0			\$0	\$0
SAN BERNARDINO COUNTY FLOOD CONTROL	409	2	0	0	\$0	\$0
SOLANO WELL NO 3	76	52	12.8	22.4	\$776	\$155
TEACHERS INSURANCE AND ANNUITY ASSOCIATION OF AMERICA	1366	50	0	0	\$0	\$0
TENNESSEE MUTUAL WELL COMPANY	530	131	32.69		\$720	\$144
TENNESSEE WATER COMPANY	538	21			\$0	\$0
TROJAN GROVES	840	0	0		\$0	\$0
WILLIAMS WELL CORPORATION LTD	694	325	52.49	77.22	\$2,859	\$572
					\$84,068	\$16,814

5-year Phase-in of Sustainability Rate



* If rate per AF is held constant in phase in period

Groundwater Charge Process

- Data collection for Engineering Investigation - January
- Draft budget for Groundwater Enterprise - January
- Groundwater Council proposed budget - January
- Board advertised rate and notice to producers - February
- Public Meeting - April 14, 2021
- Public Hearing - April 28, 2021
- Rates go into effect - July 1, 2021
- New Groundwater Charge collection - January 2021

Questions?

Daniel Cozad, General Manager
dcozad@sbvwcd.org

Katelyn Scholte, Assistant Engineer
kscholte@sbvwcd.org

SBVWCD Phone 909.793.2503

Supporting Documents

GC Non-Members in SBVWCD Boundary	Average 1959-1963 (AF)	Average 2015-2019 (AF)	2019 (AF)	SBVWCD Boundary
CEMEX CONSTRUCTION MATERIALS PACIFIC, LLC	251	640	886	SBVWCD
MENTONE CITRUS GROWERS	588	639	495	SBVWCD
ARROWHEAD COUNTRY CLUB	631	422	352	SBVWCD
MONTECITO MEMORIAL PARK	94	385	770	SBVWCD
WILLIAMS WELLS CORPORATION LTD	694	325	245	SBVWCD
MT. VIEW CEMETERY	190	249	255	SBVWCD
RAMIREZ, J. J.	1783	232	127	SBVWCD
NEW ENGLAND WATER COMPANY	0	231	194	SBVWCD
CRAFTON WATER COMPANY	933	213	78	SBVWCD
J. G. GOLFING ENTERPRISES	0	205	0	SBVWCD
RAUGHT MUTUAL WELL COMPANY	526	198	62	SBVWCD
AHD LIMITED (DEER PARK)	94	193	231	SBVWCD
CRAM-PATTERSON WELL	320	159	153	SBVWCD
GREENSPOT MUTUAL WELL COMPANY	119	148	149	SBVWCD
TENNESSEE MUTUAL WELL COMPANY	530	131	103	SBVWCD
CBC OWNERS ASSOCIATION C/O SCRES	373	128	117	SBVWCD
CALVARY CHAPEL OF REDLANDS	0	95	95	SBVWCD
REDLANDS UNIFIED SCHOOL DISTRICT	459	86	103	SBVWCD
HAPPE MUTUAL WELL COMPANY	525	68	33	SBVWCD
BARTON DEVELOPMENT C/O LUCKY FARMS	119	67	85	SBVWCD
GAY GROVE	222	62	58	SBVWCD
SOLANO WELL NO 3	76	52	0	SBVWCD
MONTE LLC	527	51	35	SBVWCD
TEACHERS INSURANCE AND ANNUITY ASSOCIATION OF AMERICA	1366	50	0	SBVWCD
FAR WELL	107	48	0	SBVWCD
NATIONAL ORANGE SHOW	135	34	40	SBVWCD
GLADYSTA WELL & WATER COMPANY	529	29	25	SBVWCD
TENNESSEE WATER COMPANY	538	21	18	SBVWCD
PIONEER MUTUAL WATER CO	283	21	13	SBVWCD
FOX ROTHSCHILD LLP	890	11	0	SBVWCD
REDLANDS-BRANSON DEVELOPMENT (BROOKSIDE PLAZA)	0	9	1	SBVWCD
DEPARTMENT OF STATE HOSPITALS - PATTON	1014	4	6	SBVWCD
SAN BERNARDINO COUNTY FLOOD CONTROL	409	2	2	SBVWCD
BELL H EUGENE	97	1	1	SBVWCD
EAST HIGHLAND RANCH	2933	1	1	SBVWCD
PHARAOHS LOST KINGDOM	0	1	0	SBVWCD

4,733 AF

GC Non-Members <u>Outside</u> SBVWCD Boundary	Average 1959-1963 (AF)	Average 2015-2019 (AF)	2019 (AF)
MUSCOY MUTUAL WATER COMPANY NO. 1	1878	1599	1571
SAN BERNARDINO COUNTY - FACILITY MANAGEMENT	1627	712	770
TERRACE WATER COMPANY	1045	381	205
DEVORE WATER COMPANY	133	373	367
REDLANDS WATER COMPANY	556	309	520
HORTON,	365	291	287
MOUNT VERNON WATER CO.	786	227	1
VULCAN - CALMAT	0	118	111
STORKSON, DAVID D.	32	103	109
WESSON, ROBERT CRAIG	139	87	64
SAN BERNARDINO COUNTY - REGIONAL PARKS	0	86	106
CALIFORNIA STATE UNIVERSITY, SAN BERNARDINO	0	83	0
MARSHBURN,	194	80	0
VILLAGE LAKES	201	79	55
HOLLIDAY TRUCKING	0	68	68
JACINTO FARMING, LARRY	0	51	80
BLUE BANNER COMPANY	0	50	50
COGBILL, CLINTON L.	241	50	50
GREENSPOT MUTUAL WATER CO. TUNNEL	0	40	50
SAN MANUEL BAND OF MISSION INDIANS	447	28	30
SAN MANUEL INDIAN RESERVATION	62	16	16
BROCK, PAULA	11	16	2
WARD, FLOYD	42	13	13
EAST HIGHLAND LLC	0	10	10
VICTORIA SEVENTH DAY ADVENTIST	15	10	10
FARROW,	10	5	5
MILLER MUTUAL WELL COMPANY	36	5	5
ROBBINS H W	4	5	5
LA BONT E, JIM	5	4	4
BATCHELOR,	2	1	1
BREAK, ALLEN ESTATE	669	1	1
CRYSTAL SPRINGS	1	1	1
HARDISON,	1	1	1
HARRISON CANYON	2	1	1
KING,	1	1	1
SATOSKI,	1	1	1
PAYNE, LARRY	0	1	0

4,571 AF

Production within the Conservation District Boundary and Total Basin Production

2021 Engineering Investigation Production

(July 2019- June 2020)

Bunker Hill (plus Lytle Creek Basins)

154,155 AF

Production District Boundary

77,758 AF

Estimated Costs by Producer based on 2019 Watermaster Production

OWNER	2019 Production (AF)	Estimated O&M Cost Groundwater Charge \$14.54/AF	Estimated Replenishment Charge \$22.04/AF	First Year Phase in 20% of \$22.04/AF
AHD LIMITED (DEER PARK)	231	\$3,359	\$ 5,091	\$ 1,018
ARROWHEAD COUNTRY CLUB	352	\$5,118	\$ 7,758	\$ 1,552
BARTON DEVELOPMENT C/O LUCKY FARMS	85	\$1,236	\$ 1,873	\$ 375
BELL H EUGENE	1	\$15	\$ 22	\$ 4
CALVARY CHAPEL OF REDLANDS	95	\$1,381	\$ 2,094	\$ 419
CANYON RANCH	0	\$0	\$ -	\$ -
CBC OWNERS ASSOCIATION C/O SCRES	117	\$1,701	\$ 2,579	\$ 516
CEMEX CONSTRUCTION MATERIALS PACIFIC, LLC	886	\$12,882	\$ 19,527	\$ 3,905
CRAFTON WATER COMPANY	78	\$1,134	\$ 1,719	\$ 344
CRAM-PATTERSON WELL	153	\$2,225	\$ 3,372	\$ 674
DANGERMOND, JACK	0	\$0	\$ -	\$ -
DEPARTMENT OF STATE HOSPITALS - PATTON	6	\$87	\$ 132	\$ 26
EAST HIGHLAND RANCH	1	\$15	\$ 22	\$ 4
FAR WELL	0	\$0	\$ -	\$ -
FOX ROT HSCHILD LLP	0	\$0	\$ -	\$ -
GAY GROVE	58	\$843	\$ 1,278	\$ 256
GLADYSTA WELL & WATER COMPANY	25	\$364	\$ 551	\$ 110
GREENSPOT MUTUAL WELL COMPANY	149	\$2,166	\$ 3,284	\$ 657
GREENSPOT VILLAGE & MARKET PLACE LLC	0	\$0	\$ -	\$ -
GUYETTE, DOUG	0	\$0	\$ -	\$ -
HAPPE MUTUAL WELL COMPANY	33	\$480	\$ 727	\$ 145
INLAND VALLEY DEVELOPMENT AGENCY	0	\$0	\$ -	\$ -
J. G. GOLFING ENTERPRISES	0	\$0	\$ -	\$ -
KANSAS STREET MUTUAL WATER COMPANY	0	\$0	\$ -	\$ -
KING STREET MUTUAL WELL COMPANY	0	\$0	\$ -	\$ -
MENTONE CITRUS GROWERS	495	\$7,197	\$ 10,910	\$ 2,182
MONTE LLC	35	\$509	\$ 771	\$ 154
MONTECITO MEMORIAL PARK	770	\$11,196	\$ 16,971	\$ 3,394
MT . VIEW CEMETERY	255	\$3,708	\$ 5,620	\$ 1,124
NATIONAL ORANGE SHOW	40	\$582	\$ 882	\$ 176
NEW ENGLAND WATER COMPANY	194	\$2,821	\$ 4,276	\$ 855
PHARAOHS LOST KINGDOM	0	\$0	\$ -	\$ -
PIONEER MUTUAL WATER CO	13	\$189	\$ 287	\$ 57
RAMIREZ, J. J.	127	\$1,847	\$ 2,799	\$ 560
RAUGHT MUTUAL WELL COMPANY	62	\$901	\$ 1,366	\$ 273
REDLANDS UNIFIED SCHOOL DISTRICT	103	\$1,498	\$ 2,270	\$ 454
REDLANDS-BRANSON DEVELOPMENT (BROOKSIDE PLAZA)	1	\$15	\$ 22	\$ 4
SAN BERNARDINO COUNTY FLOOD CONTROL	2	\$0	\$ 44	\$ 9
SAN BERNARDINO AVE WATER CO.	0	\$0	\$ -	\$ -
SOLANO WELL NO 3	0	\$0	\$ -	\$ -
TEACHERS INSURANCE AND ANNUITY ASSOCIATION OF AMERICA	0	\$0	\$ -	\$ -
TENNESSEE MUTUAL WELL COMPANY	103	\$1,498	\$ 2,270	\$ 454
TENNESSEE WATER COMPANY	18	\$262	\$ 397	\$ 79
TROJAN GROVES	0	\$0	\$ -	\$ -
WILLIAMS WELL CORPORATION LTD	245	\$3,562	\$ 5,400	\$ 1,080
		\$68,789	\$ 104,315	\$ 20,863

EAM Based

Groundwater Council Equitable Allocation Budget for FY 2021-22

Agency	Party Gap FY21-2 (AF)	Sustainability FY21-22 (AF)	Total Equitable Water Cost FY21-22 (\$)	Water Corrections for Previous Years (\$)	Total Water Cost with Corrections (\$)	Total Water with Corrections (AF)	Equitable O&M Costs FY21-22 (\$)	O&M Corrections for Previous Years (\$)	Total O&M Cost with Corrections (\$)	Total Party Costs FY21-22 (\$)	Voting Weight 2020-21
Bear Valley Mutual Water Company	-	-	\$ -	\$ -	\$ -	0	\$ 112	\$ -	\$ 112	\$ 112	0.00%
City of Colton	-	597	\$ 70,642	\$ 653	\$ 71,295	602	\$ 22,031	\$ (87)	\$ 21,944	\$ 93,239	3.1%
City of Loma Linda	846	810	\$ 196,040	\$ (304)	\$ 195,736	1653	\$ 35,370	\$ (121)	\$ 35,249	\$ 230,985	7.8%
City of Redlands	-	659	\$ 77,986	\$ (197,069)	\$ (119,082)	-1006	\$ 152,860	\$ (446)	\$ 152,415	\$ 33,332	7.8%
City of Rialto	1,335	1,001	\$ 276,696	\$ (361)	\$ 276,334	2334	\$ 33,954	\$ (127)	\$ 33,827	\$ 310,161	10.4%
City of San Bernardino	2,787	6,762	\$ 1,130,683	\$ (2,987)	\$ 1,127,696	9524	\$ 278,083	\$ (930)	\$ 277,153	\$ 1,404,849	47.3%
East Valley Water District	-	-	\$ -	\$ 3,087	\$ 3,087	26	\$ 91,896	\$ (342)	\$ 91,554	\$ 94,641	3.1%
Fontana Union Water Company	-	723	\$ 85,559	\$ 1,313	\$ 86,872	734	\$ 18,235	\$ 2,288	\$ 20,524	\$ 107,396	3.5%
Loma Linda University	-	170	\$ 20,173	\$ 167	\$ 20,341	172	\$ 7,194	\$ (23)	\$ 7,171	\$ 27,511	0.9%
San Bernardino Valley M.W.D.	-	-	\$ -	\$ 19	\$ 19	0	\$ 11	\$ (8)	\$ 3	\$ 22	0.0%
West Valley Water District	1,670	1,864	\$ 418,429	\$ 1,498	\$ 419,927	3547	\$ 56,364	\$ (199)	\$ 56,165	\$ 476,092	15.9%
Yucaipa Valley Water District	26	18	\$ 5,188	\$ (4)	\$ 5,183	44	\$ 689	\$ (4)	\$ 685	\$ 5,868	0.2%
Total GC Parties:	6,664	12,604	\$ 2,281,396	\$ (193,987)	\$ 2,087,409	17630	\$ 696,800	\$ 0	\$ 696,800	\$ 2,784,209	100%
Mountain View Power Co.	-	286	\$ 33,841	\$ (70)	\$ 33,772	285	#N/A	\$ -	#N/A	\$ 33,772	#N/A
Muscoy Mutual Water Company No. 1	-	266	\$ 31,509	\$ 235	\$ 31,744	268	#N/A	\$ -	#N/A	\$ 31,744	#N/A
San Bernardino County - Facility Management	-	119	\$ 14,035	\$ 105	\$ 14,139	119	#N/A	\$ -	#N/A	\$ 14,139	#N/A
Terrace Water Company	-	63	\$ 7,506	\$ 83	\$ 7,589	64	#N/A	\$ -	#N/A	\$ 7,589	#N/A
Other Inside SBVWCD	-	1,086	\$ 128,593	\$ (5)	\$ 128,588	1086	#N/A	\$ -	#N/A	\$ 128,588	#N/A
Other Outside SBVWCD	-	202	\$ 23,975	\$ (1)	\$ 23,974	202	#N/A	\$ -	#N/A	\$ 23,974	#N/A
San Bernardino Non-Parties Total:	-	2,022	\$ 239,459	\$ 347	\$ 239,806	2025	\$ -	\$ -	\$ -	\$ 239,806	0%
Western Entities Total:	-	-	-	-	-	0	\$ -	-	-	\$ -	0%
Total:	6,664	14,627	\$ 2,520,855	\$ (193,640)	\$ 2,327,214	19656	\$ 696,800	\$ 0	\$ 696,800	\$ 3,024,014	100%

Since Redlands has and SCE intends to join the GC the Non-Party Pool total = \$205,618

Also Timing Requires Rate Setting

- The EI is a Requirement for Rate Setting
- Rate Setting based on Draft Budget
- Preliminary review of the budget February 10
- Present options of rate changes to Board
- Advertise and Notice a Rate
- Work with all to find the right rate
- Public Meeting – April 14, 2021
- Public Hearing – April 28, 2021

Groundwater Council Proposal

2021-2022 SBVWCD Groundwater Enterprise Budget	
Groundwater Charge (5% increase)	\$667,342
Groundwater Council SBVWCD	\$624,000 GC
Groundwater Council (San Bernardino County Flood up to)	\$79,615 Pass through
SBVMWD Lease and Exchange Plan	\$264,070
	\$1,475,798

Potential Rate Options

Attachment A Preliminary Groundwater Charge Revenue Estimates

GWA	Date	Total Prod	Rate(s)	GW Charge	GW Council	Total Rev
48	2017	35,878	\$3.23/\$11.62	\$ 378,627		\$378,627
49	2017.5	47,832	\$3.36/\$12.08	\$ 523,894		\$523,894
50	2018	33,131	\$3.36/\$12.08	\$ 361,838		\$361,838
51	2018.5	29,464	\$6.51/\$12.56	\$ 332,561	\$240,689	\$573,250
52	2019	18,644	\$6.51/\$12.56	\$ 215,449	\$240,689	\$456,137
53	2019.5	23,183	\$9.54/\$13.19	\$ 359,858	\$326,026	\$685,884
54	2020	23,018	\$9.54/\$13.19	\$ 286,694	\$326,026	\$612,720
55	2020.5	17,121	\$13.85	\$ 326,545	\$280,197	\$606,742
56	2021	14,178	\$13.85	\$ 306,161	\$263,484	\$569,645

\$543,681

No Change in GW Charge

		Total Prod	Rate(s)	GW Charge	GC Income
56	2021	14,178	\$ 13.85	\$ 196,370	GC Income
57	2021.5	19,375	\$ 13.85	\$ 268,345	\$348,400.00
58	2022	18,423	\$ 13.85	\$ 255,160	\$348,400.00
	Fiscal 21-22			\$ 523,506	\$696,800.00
	Calendar 21			\$ 464,715	
				FY TOTAL \$	1,220,306

4% Increase GW Charge

		Total Prod	Rate(s)	GW Charge	GC Income
56	2021	14,178	\$ 13.85	\$ 196,370	GC Income
57	2021.5	19,375	\$ 14.40	\$ 279,079	\$348,400.00
53	2022	18,423	\$ 14.40	\$ 265,367	\$348,400.00
	Fiscal 21-22			\$ 544,446	\$696,800.00
	Calendar 21			\$ 475,449	
				FY TOTAL \$	1,241,246

5% Increase in GW Charge

		Total Prod	Rate(s)	GW Charge	GC Income
56	2021	14,178	\$ 13.85	\$ 196,370	GC Income
57	2021.5	19,375	\$ 14.54	\$ 281,763	\$348,400.00
58	2022	18,423	\$ 14.54	\$ 267,919	\$348,400.00
	Fiscal 21-22			\$ 549,681	\$696,800.00
	Calendar 21			\$ 478,133	
				FY TOTAL \$	1,246,481

Revenue Budget

GL ACCT:	GL DESCRIPTION:	Approved 2020-2021 Budget	Projected Annual Costs (7/1/20- 6/30/21)	Draft 2021-2022 Budget	GROUNDWATER RECHARGE ENTERPRISE		
					2021 BUDGET:	% BUDGET	BASIS:
Draft 2021-2022 Budget							
INCOME:							
4012	INTEREST INCOME-LAIF	2,400.00	2,300.00	4,000.00	0.00		
4013	INTEREST INCOME-CALTRUST	79,822.43	9,963.98	25,600.00	0.00		
4014	INTEREST INCOME-CA CREDIT UNION	3,672.00	0.00	0.00	0.00		
4015	INTEREST INCOME-UBS	36,720.00	9,658.08	27,860.00	0.00		
4016	INTEREST INCOME ARTP	459,000.00	37,712.94	216,000.00	0.00	0.00%	
4017	ARTP Capital Income			600,000.00	0.00	0.00%	
4022	GROUNDWATER CHARGE	459,721.79	677,896.28	549,681.07	549,681.07	100.00%	PER OFFSET
4024	GROUNDWATER COUNCIL REVENUE	670,000.00	543,684.00	696,800.00	696,800.00	100.00%	PROPOSED
4025	GW SUSTAINABILITY/REPLENISHMENT			16,814.00	16,814.00	100.00%	
4031	PLANT SITE CEMEX	48,000.00	48,000.00	48,000.00	0.00		
4032	CEMEX - ROYALTY/LEASE	586,000.00	660,000.00	600,000.00	0.00		
4036	AGGREGATE MAINTENANCE	60,000.00	60,000.00	60,000.00	0.00		
4040	MISCELLANEOUS INCOME	10,000.00	60,000.00	10,000.00	0.00		
4050	PROPERTY TAX	124,588.24	124,588.24	130,817.65	0.00		
4055	SBVMWD LEASE AGREEMENT	423,344.11	415,202.87	421,846.12	232,015.36	55.00%	
4062	MENTONE PROPERTY INCOME	100.00	100.00	100.00	0.00		
4065	REDLANDS PLAZA	193,643.56	136,826.87	218,036.34	0.00		
4066	REDLANDS PLAZA CAM	40,520.36	31,570.54	44,906.35	0.00		
4080	EXCHANGE PLAN	30,000.00	30,000.00	30,000.00	30,000.00	100.00%	HISTORIC
4025	WASH PLAN REVENUE * from Reserves	220,000.00	450,000.00	220,000.00	0.00		
4086	PLUNGE CREEK IRWMP Grant	200,000.00	319,796.80	0.00	0.00		
4999	TRUST REIMBURSEMENT WASH PLAN	142,500.00	142,500.00	142,500.00	0.00		
	TOTAL INCOME:	3,790,032.48	3,759,800.60	4,062,961.52	1,525,310.43		
							Groundwater Totals \$ 1,246,481

Expense Budget

GL ACCT:	GL DESCRIPTION:	Approved 2020-2021 Budget	Projected Annual Costs (7/1/20-6/30/21)	Draft 2021-2022 Budget	GROUNDWATER RECHARGE ENTERPRISE		
					2021 BUDGET:	% BUDGET	BASIS:
Draft 2021-2022 Budget							
EXPENSES:							
5080	LAFCO CONTRIBUTION/FEES	4,000.00	4,281.93	4,367.57	0.00		
5120	MISC. PROFESSIONAL SERVICES	130,000.00	130,000.00	300,000.00	75,000.00	25.00%	Mill Creek Permitting init.
5122	WASH PLAN PROFESSIONAL SERVICES	245,000.00	300,000.00	245,000.00	0.00		
5123	HABITAT MANAGEMENT-WP	142,500.00	142,500.00	346,250.00	0.00		
5125	ENGINEERING SERVICES	18,000.00	18,000.00	30,000.00	30,000.00	100.00%	
5126	GW SUSTAINABILITY/REPLENISHMENT			16,814.00		100.00%	Pass through of GC cost
5130	AERIAL PHOTO/SURVEYING/MARKET	1,000.00	2,220.00	1,000.00	0.00		
5133	Regional River HCP Contribution CIP #7	25,000.00	25,000.00	25,000.00	18,750.00	75.00%	
5155	WP TRAILS SERVICES	25,000.00	25,000.00	25,000.00	0.00		
5160	IT SUPPORT	7,210.00	8,210.00	7,500.00	3,750.00	50.00%	Share by need
5170	AUDIT	26,155.00	23,840.00	26,900.00	9,684.00	36.00%	Share based on Revenue
5175	LEGAL-WASH PLAN	20,000.00	70,000.00	30,000.00	0.00		
5180	LEGAL	175,000.00	60,000.00	220,000.00	33,000.00	15.00%	GSC and COE Litigation
FIELD OPERATIONS:							
5210	EQUIPMENT MAINTENANCE	6,556.36	6,556.36	7,200.00	7,200.00	100.00%	based on average actual
5215	PROPERTY MAINTENANCE	42,000.00	22,000.00	42,000.00	33,600.00	80.00%	Basin Maintenance Moved
5223	TEMP FIELD LABOR	11,000.00	5,000.00	11,000.00	11,000.00	100.00%	Invasive and canal cleaning
5225	FIELD CLEAN UP-DUMPING/VECTOR	60,000.00	60,000.00	60,000.00	36,000.00	60.00%	
5050	BASIN CLEANING FORMERLY 7050 CAPITAL	50,000.00	50,000.00	50,000.00	50,000.00	100.00%	
VEHICLE OPERATIONS:							
5310	VEHICLE MAINTENANCE	8,000.00	8,000.00	8,000.00	8,000.00	100.00%	reduced from 2013-14 base
5320	FUEL	13,750.00	13,750.00	15,125.00	15,125.00	100.00%	EST. LOWER FUEL COST
UTILITIES:							
5410	ALARM SERVICE	1,500.00	1,500.00	1,545.00	772.50	50.00%	FACILITIES SHARE
5420	ELECTRICITY	10,000.42	7,000.00	7,563.42	1,512.68	20.00%	FACILITIES SHARE
5430	MOBILE PHONES	5,265.00	5,265.00	5,370.30	4,027.73	75.00%	FACILITIES SHARE
5440	TELEPHONE	8,000.00	5,500.00	7,500.00	2,250.00	30.00%	FACILITIES SHARE
5450	NATURAL GAS	1,134.58	1,100.00	1,155.00	462.00	40.00%	FACILITIES SHARE
5460	WATER / TRASH / SEWER	2,438.00	3,438.00	3,609.90	1,443.96	40.00%	FACILITIES SHARE
5470	INTERNET SERVICES	2,731.82	2,631.82	2,763.41	829.02	30.00%	FACILITIES SHARE

Expense Budget

GL ACCT:	GL DESCRIPTION:	Approved 2020-2021 Budget	Projected Annual Costs (7/1/20-6/30/21)	Draft 2021-2022 Budget	GROUNDWATER RECHARGE ENTERPRISE		
					2021 BUDGET:	% BUDGET	BASIS:
Draft 2021-2022 Budget							
EXPENSES:							
GENERAL ADMINISTRATION:							
6001	GENERAL ADMIN-OTHER	4,500.00	4,500.00	4,500.00	2,250.00	50.00%	ESTIMATE BY USE
6002	WEBSITE ADMINISTRATION	6,000.00	6,000.00	6,000.00	0.00		
6003	PROPERTY TAX	0.00	0.00	0.00	0.00		
6004	MEETING EXPENSES	2,060.00	1,060.00	2,060.00	0.00		
6006	PERMITS	10,000.00	10,000.00	45,000.00	22,500.00	50.00%	Fish and Wildlife
6007	INTER DISTRICT COSTS	10,000.00	10,000.00	10,000.00	5,000.00	50.00%	
6009	LICENSES	1,630.53	1,650.20	1,712.06	1,369.65	80.00%	
6010	SURETY BOND	1,900.00	1,815.00	1,900.00	0.00		
6012	OFFICE MAINTENANCE	3,275.40	1,275.40	2,550.80	0.00		
6013	OFFICE LEASE PAYMENT	60,000.00	60,000.00	60,000.00	12,000.00	20.00%	Share by allocation
6015	MENTONE HOUSE MAINTENANCE	5,000.00	5,000.00	5,000.00	0.00		
6016	REDLANDS PLAZA MAINTENANCE	40,000.00	40,000.00	40,000.00	0.00		
6026	REDLANDS PLAZA CAM EXPENSES	32,290.50	32,290.50	32,936.31	0.00		
6018	JANITORIAL SERVICES	9,108.89	9,708.89	10,400.00	0.00		
6019	JANITORIAL SUPPLIES	515.00	515.00	515.00	206.00	40.00%	FACILITIES SHARE
6020	VACANCY MARKETING-REDLANDS PLAZA	1,500.00	500.00	5,000.00	0.00		
6027	COMPUTER SOFTWARE	600.00	1,500.00	1,575.00	78.75	5.00%	FACILITIES SHARE
6030	OFFICE SUPPLIES	3,750.67	3,750.67	3,750.67	187.53	5.00%	FACILITIES SHARE
6033	OFFICE EQUIPMENT RENTAL	9,500.00	9,500.00	9,500.00	475.00	5.00%	FACILITIES SHARE
6036	PRINTING	1,100.00	2,000.00	2,000.00	800.00	40.00%	GW Charge
6039	POSTAGE AND OVERNIGHT DELIVERY	1,200.00	1,200.00	1,200.00	300.00	25.00%	GW Charge
6042	PAYROLL PROCESSING FEES	2,775.85	2,775.85	2,859.13	0.00		
6045	BANK INVESTMENT SERVICE CHARGES	1,575.00	1,000.00	1,000.00	0.00		
6051	UNIFORMS	2,750.00	2,750.00	3,025.00	2,117.50	70.00%	Field Uniforms
6060	OUTREACH	60,000.00	60,000.00	60,000.00	12,000.00	20.00%	share by mission
6087	EDUCATIONAL REIMBURSEMENT	5,000.00	2,500.00	5,000.00	0.00		
6090	SUBSCRIPTIONS/PUBLICATIONS	1,232.00	1,500.00	1,355.20	0.00		
6091	PUBLIC NOTICES	3,200.00	3,200.00	3,200.00	2,560.00	80.00%	% OF 2010
6093	MEMBERSHIPS	22,042.80	25,000.00	25,289.23	0.00		

Expense Budget

GL ACCT:	GL DESCRIPTION:	Approved 2020-2021 Budget	Projected Annual Costs (7/1/20- 6/30/21)	Draft 2021-2022 Budget	GROUNDWATER RECHARGE ENTERPRISE		
					2021 BUDGET:	% BUDGET	BASIS:
Draft 2021-2022 Budget							
EXPENSES:							
BENEFITS:							
6110	VISION INSURANCE	2,593.61	2,593.61	2,593.61	1,423.89	45%	Based on percent of hours
6120	WORKER'S COMP INSURANCE	16,648.29	16,648.29	15,085.47	8,281.92	45%	Based on percent of hours
6130	DENTAL INSURANCE	11,134.47	11,134.47	9,255.83	5,081.45	45%	Based on percent of hours
6150	MEDICAL INSURANCE	215,169.93	215,169.93	213,169.24	117,029.92	45%	Based on percent of hours
6150.01	MEDICAL EMPLOYEE CONTRIBUTION	-28,597.42	-28,597.42	-27,067.74	-12,180.48	45%	
6160	PAYROLL TAXES - EMPLOYER	81,796.00	81,796.00	84,228.86	46,241.64	45%	Based on percent of hours
6170	PERS RETIREMENT	235,124.31	235,124.31	296,879.14	162,986.65	45%	Based on percent of hours
6170.01	PERS EMPLOYEE CONTRIBUTION	-44,054.08	-103,897.36	-45,359.82	-20,411.92	45%	
SALARIES:							
6210	OVERTIME				0.00		633,222.64
6230	REGULAR SALARIES	1,141,880.19	1,141,880.19	1,173,458.38			
Sub	Field Staff Part Time				0.00	50.00%	Salary+overhead 22% % time
Sub	Field Supervisor	89,984.17	89,984.17	90,465.23	110,367.58	100.00%	Salary+overhead 22% time
Sub	Field Operations Spec I	53,941.04	53,941.04	55,318.12	67,488.11	100.00%	Salary+overhead 22% time
Sub	Field Operations Spec I	44,407.48	44,407.48	45,123.94	44,040.96	80.00%	Salary+overhead 22% time
Sub	Asst Mgr/Lands Resources Mgr.	205,218.77	205,218.77	213,500.98	104,188.48	40.00%	Salary+overhead 22% time
Sub	Admin Services Spec.	87,578.30	87,578.30	87,291.78	42,598.39	40.00%	Salary+overhead 22% time
Sub	Admin Analyst	88,814.96	88,814.96	88,508.99	32,394.29	30.00%	Salary+overhead 22% time
Sub	Senior Engineer	167,556.73	167,556.73	169,019.14	41,240.67	20.00%	Salary+overhead 22% time
Sub	Assistant Engineer	74,941.84	74,941.84	78,314.81	47,772.03	50.00%	Salary+overhead 22% time
Sub	GIS Intern/contract	15,566.40	15,566.40	15,336.00	18,709.92	100.00%	Salary+overhead 22% time
Sub	General Manager	285,332.11	285,332.11	302,463.41	110,701.61	30.00%	Salary+overhead 22% time
Sub	Doc Imaging Intern	12,972.00	12,972.00	12,780.00	6,236.64	40.00%	Salary+overhead 22% time
sub	Engineering Intern	15,566.40	15,566.40	15,336.00	7,483.97	40.00%	

Expense Budget

GL ACCT:	GL DESCRIPTION:	Approved 2020-2021 Budget	Projected Annual Costs (7/1/20- 6/30/21)	Draft 2021-2022 Budget	GROUNDWATER RECHARGE ENTERPRISE		
					2021 BUDGET:	% BUDGET	BASIS:
Draft 2021-2022 Budget							
EXPENSES:							
	INSURANCE:						0.42
6310	PROPERTY / AUTO INSURANCE	4,400.00	4,209.65	4,420.13	3,315.10	75.00%	Approximate from Insurer
6320	GENERAL LIABILITY INSURANCE	32,300.00	32,991.90	33,651.74	25,238.80	75.00%	Approximate from Insurer
DIRECTOR'S EXPENSES:							
6401	DIRECTOR'S FEES	94,861.31	94,861.31	75,494.10	0.00		
6410	MILEAGE	4,000.00	2,000.00	4,000.00	0.00		
6415	AIR FARE	2,500.00	1,200.00	2,500.00	0.00		
6420	OTHER TRAVEL	500.00	500.00	500.00	0.00		
6425	MEALS	3,500.00	1,500.00	3,500.00	0.00		
6430	LODGING	4,000.00	2,000.00	4,000.00	0.00		
6435	CONF/SEMINAR REGISTRATIONS	5,000.00	2,500.00	5,000.00	0.00		
6440	ELECTION FEES/REDISTRICTING	100,000.00	0.00	25,000.00	0.00		
ADMINISTRATIVE/STAFF EXPENSES:							
6510	MILEAGE	2,500.00	1,100.00	2,500.00	625.00	25.00%	Allocation basis 2011
6515	AIR FARE	3,000.00	1,500.00	3,000.00	750.00	25.00%	Allocation basis 2011
6520	OTHER TRAVEL	1,050.00	350.00	1,050.00	262.50	25.00%	Allocation basis 2011
6525	MEALS	2,035.00	750.00	2,035.00	712.25	35.00%	Allocation basis 2011
6530	LODGING	3,750.00	1,500.00	3,750.00	1,312.50	35.00%	Allocation basis 2011
6535	CONF/SEMINAR REGISTRATIONS	4,000.00	4,000.00	4,000.00	1,400.00	35.00%	
9999	Contribution toward Capital Maint.	444,000.00	444,000.00	296,000.00	146,000.00		Reduced Allocation
8010	Capital Reserve GWE/Rate Stabilization	0.00	0.00	0.00	0.00	100.00%	Use not contribution
TOTAL EXPENSES:		3,836,839.42	3,633,599.50	4,040,635.93	1,525,543.18		5%
Operating Revenue		3,790,032.48	3,759,800.60	4,062,961.52	1,525,310.43		7%
NET OPERATING REVENUE		-46,806.94		22,325.59	-232.75		

Potential Rate Options

Attachment A Preliminary Groundwater Charge Revenue Estimates

GWA	Date	Total Prod	Rate(s)	GW Charge	GW Council	Total Rev
48	2017	35,878	\$3.23/\$11.62	\$ 378,627		\$378,627
49	2017.5	47,832	\$3.36/\$12.08	\$ 523,894		\$523,894
50	2018	33,131	\$3.36/\$12.08	\$ 361,838		\$361,838
51	2018.5	29,464	\$6.51/\$12.56	\$ 332,561	\$240,689	\$573,250
52	2019	18,644	\$6.51/\$12.56	\$ 215,449	\$240,689	\$456,137
53	2019.5	23,183	\$9.54/\$13.19	\$ 359,858	\$326,026	\$685,884
54	2020	23,018	\$9.54/\$13.19	\$ 286,694	\$326,026	\$612,720
55	2020.5	17,121	\$13.85	\$ 326,545	\$280,197	\$606,742
56	2021	14,178	\$13.85	\$ 306,161	\$263,484	\$569,645

\$543,681

No Change in GW Charge

			0%		
56	2021	14,178	\$ 13.85	\$ 196,370	GC Income
57	2021.5	19,375	\$ 13.85	\$ 268,345	\$348,400.00
58	2022	18,423	\$ 13.85	\$ 255,160	\$348,400.00
	Fiscal 21-22			\$ 523,506	\$696,800.00
	Calendar 21			\$ 464,715	
					FY TOTAL \$ 1,220,306

4% Increase GW Charge

			4%		
56	2021	14,178	\$ 13.85	\$ 196,370	GC Income
57	2021.5	19,375	\$ 14.40	\$ 279,079	\$348,400.00
53	2022	18,423	\$ 14.40	\$ 265,367	\$348,400.00
	Fiscal 21-22			\$ 544,446	\$696,800.00
	Calendar 21			\$ 475,449	
					FY TOTAL \$ 1,241,246

5% Increase in GW Charge

			5%		
56	2021	14,178	\$ 13.85	\$ 196,370	GC Income
57	2021.5	19,375	\$ 14.54	\$ 281,763	\$348,400.00
58	2022	18,423	\$ 14.54	\$ 267,919	\$348,400.00
	Fiscal 21-22			\$ 549,681	\$696,800.00
	Calendar 21			\$ 478,133	
					FY TOTAL \$ 1,246,481

Groundwater Council 2021-2022

Groundwater Council Equitable Allocation Budget for FY 2021-22

Agency	Party Gap FY21-2 (AF)	Sustainability FY21-22 (AF)	Total Equitable Water Cost FY21-22 (\$)	Water Corrections for Previous Years (\$)	Total Water Cost with Corrections (\$)	Total Water with Corrections (AF)	Equitable O&M Costs FY21-22 (\$)	O&M Corrections for Previous Years (\$)	Total O&M Cost with Corrections (\$)	Total Party Costs FY21-22 (\$)	Voting Weight 2020-21
Bear Valley Mutual Water Company	-	-	\$ -	\$ -	\$ -	0	\$ 112	\$ -	\$ 112	\$ 112	0.00%
City of Colton	-	599	\$ 70,904	\$ 593	\$ 71,497	604	\$ 22,031	\$ (87)	\$ 21,944	\$ 93,441	3.4%
City of Loma Linda	842	813	\$ 195,911	\$ (212)	\$ 195,699	1653	\$ 35,370	\$ (121)	\$ 35,249	\$ 230,948	8.4%
City of Rialto	1,331	1,005	\$ 276,573	\$ (288)	\$ 276,285	2333	\$ 33,954	\$ (127)	\$ 33,827	\$ 310,112	11.3%
City of San Bernardino	2,750	6,787	\$ 1,129,255	\$ (1,867)	\$ 1,127,388	9522	\$ 278,083	\$ (930)	\$ 277,153	\$ 1,404,541	51.2%
East Valley Water District	-	-	\$ -	\$ 2,770	\$ 2,770	23	\$ 91,896	\$ (342)	\$ 91,554	\$ 94,324	3.3%
Fontana Union Water Company	-	725	\$ 85,877	\$ 1,250	\$ 87,127	736	\$ 18,235	\$ 2,288	\$ 20,524	\$ 107,651	3.8%
Loma Linda University	-	171	\$ 20,248	\$ 151	\$ 20,399	172	\$ 7,194	\$ (23)	\$ 7,171	\$ 27,570	1.0%
San Bernardino Valley M.W.D.	-	37	\$ 4,344	\$ 13	\$ 4,357	37	\$ 11	\$ (8)	\$ 3	\$ 4,360	0.2%
West Valley Water District	1,655	1,871	\$ 417,456	\$ 1,337	\$ 418,793	3537	\$ 56,364	\$ (199)	\$ 56,165	\$ 474,958	17.2%
Yucaipa Valley Water District	26	18	\$ 5,188	\$ (6)	\$ 5,182	44	\$ 689	\$ (4)	\$ 685	\$ 5,867	0.2%
Total GC Parties:	6,603	12,027	\$ 2,205,758	\$ 3,741	\$ 2,209,499	18661	\$ 543,940	\$ 446	\$ 544,385	\$ 2,753,884	100%
City of Redlands	-	676	\$ 80,088	\$ (197,527)	\$ (117,439)	-992	\$ 152,860	\$ (446)	\$ 152,415	\$ 34,975	#N/A
Mountain View Power Co.	-	287	\$ 33,967	\$ (100)	\$ 33,867	286	#N/A	\$ -	#N/A	\$ 33,867	#N/A
Muscoy Mutual Water Company No. 1	-	267	\$ 31,626	\$ 210	\$ 31,836	269	#N/A	\$ -	#N/A	\$ 31,836	#N/A
San Bernardino County - Facility Management	-	119	\$ 14,087	\$ 94	\$ 14,181	120	#N/A	\$ -	#N/A	\$ 14,181	#N/A
Terrace Water Company	-	64	\$ 7,534	\$ 76	\$ 7,610	64	#N/A	\$ -	#N/A	\$ 7,610	#N/A
Other San Bernardino Extractions	-	1,272	\$ 150,636	\$ (133)	\$ 150,502	1271	#N/A	\$ -	#N/A	\$ 150,502	#N/A
San Bernardino Non-Parties Total:	-	2,685	\$ 317,937	\$ (197,380)	\$ 120,557	2010	\$ 152,860	\$ (446)	\$ 152,415	\$ 272,971	0%
Western Entities Total:	-	-	-	-	-	0	\$ -	-	-	\$ -	0%
Total:	6,603	14,712	\$ 2,523,695	\$ (193,639)	\$ 2,330,056	20671	\$ 696,800	\$ 0	\$ 696,800	\$ 3,026,856	100%

Replenishment and Sustainability

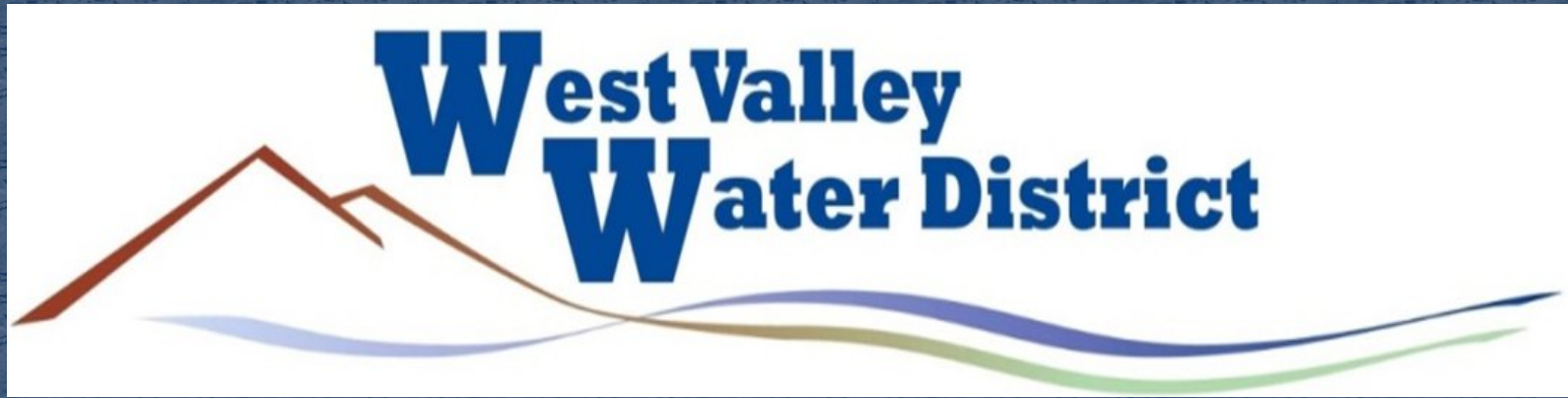
- Groundwater Council request letter to in full participation which would add a replenishment/sustainability component to the Groundwater Charge to achieve equity
- Staff evaluated the implementation options and reviewed with the Finance and Admin Committee and Groundwater Council
- Both recommended a phase-in period
- Legal Counsel provided guidance

Replenishment and Sustainability

- Staff used similar methodology to the EAM for applicable producers in the District boundary who are not or likely to be Groundwater Council members
- The producers collectively EAM share would be \$22.04/AF and staff is proposing a 5-year phase-in period adding \$4.41/AF in year one
- Page 2 of the staff report table shows estimates
- Staff will prepare materials for producers and schedule meetings

EI Approval and Rate

- Board reviewed and discussed opinions
- Board to select a Noticed Rate
- Advertise and Notice Rate, letters etc.
- Producer replenishment component meeting
- Public Meeting April 14, 2021
- Public Hearing April 28, 2021
- Rate if adjusted assessments to be paid 2021 and 2022



Lytle Creek Recharge Operations by WVWD

February 2021

Flows to the Afterbay Ponds are Metered



Inside the Metering Building

Lytle Creek Flow Meter

- Registers Lytle Creek surface water flows.
- Calculates proration and diverts flows to City of Rialto, WWWD, and San Bernardino.
- WWWD purchases San Bernardino's Lytle Creek water rights



Send to Recharge Ponds

- When turbidity is too high to treat, WWWD sends Lytle Creek Surface water to recharge ponds via this **outlet**.



Rain Index Tracker

- High rain index results in high turbidity

West Valley Water District Record of Climatological Observation

Month: March Year: 2020

Day	Temp. °F Zone 4 Station		Headquarters Rain Gauge	South Ops Rain Gauge	Zone 8 Rain Gauge
	Max	Min.			
1	57	40	0	0	0
2	63	44	0	0	0
3	75	53	0	0	0
4	78	46	0	0	0
5	82	47	0	0	0
6	79	51	0	0	0
7	66	49	0	0	0
8	67	46	0	0	0
9	72	45	0	0	0
10	68	50	0.76	0.78	0.87
11	72	50	0.14	0.1	0.16
12	65	47	0.4	0.6	0.1
13	52	48	1.6	1.67	1.94
14	63	49	0.34	0.37	0.31
15	60	49	0.5	0.2	0.9
16	58	46	0.34	0.3	0.45
17	58	41	0	0	0
18	55	40	0.2	0.32	0.65
19	54	45	0	0	0
20	61	45	0	0	0
21	67	44	0	0	0
22	69	44	0	0	0
23	61	46	0.74	0.91	1.38
24	60	47	0	0	0
25	64	44	0	0	0
26	59	38	0	0	0
27	63	37	0	0	0
28	65	40	0	0	0
29	65	42	0	0	0
30	74	41	0	0	0
31	78	49	0	0	0
Rainfall Totals			5.02	5.25	6.76

Roemer Daily Log

- Records flow daily

Oliver P. Roemer Water Filtration Facility Log Sheet

Operator: Sergio Granda		SG	Plant Flow: 12.10	Date: 03/12/20					
Segment 1		Pre-Treatment		Filtration					
Highest Daily Flow GPM	8400	Inf.	Eff.	Inf.	Eff.				
Low Contact Chamber Level Ft.	8.3	Temp. C	13.2	13.2	Temp. C	13.4	13.2		
Low Cl2 Contact Chamber Mg/L	1.55	pH	7.40	7.20	pH	7.25	7.50		
Segment 2		Alk.	54.5	75.2	Alk.	89	81.8		
Low Cl2 Transmission Main Mg/L	1.66	TOC	3.37	1.59	TOC	2.914	1.570		
Segment 3		TDS	180	171	TDS	170	176		
Low Zone 5 Reservoir Level Ft.	11.1	NTU	0.437	0.176	Alum	0.015	0.013		
Low Cl2 Residual Zone 5 Mg/L	1.34	Pre-Treatment GPM	6000	<input type="checkbox"/> Yes <input checked="" type="checkbox"/> No					
Filters Operating: <input checked="" type="checkbox"/> 1 <input checked="" type="checkbox"/> 2 <input checked="" type="checkbox"/> 3 <input checked="" type="checkbox"/> 4 <input checked="" type="checkbox"/> 5 <input checked="" type="checkbox"/> 6		Trains Operating: <input checked="" type="checkbox"/> 1 <input checked="" type="checkbox"/> 2 <input checked="" type="checkbox"/> 3		Lytle GPM	4850				
Time	CFS	Flume	Total GPM	Rialto GPM	Decant	SPW GPM	3584		
8:00 AM	18.0	17.6	4869	1034	NTU	1.3	Ratio Lytle To SPW:		
2:00 PM	18.0	17.6	4869	1034	Rec. GPM	600	7.1%	% Lytle	58
Chemical Storage		-	Basin Recycled	<input type="checkbox"/> 1 <input checked="" type="checkbox"/> 2 <input type="checkbox"/> 3	% SPW			42	
Filtration	Pre-Treat.		Pre Treatment Chemical Dosage						
ACH (gal.)	4,780	ACH (gal)	3897	Flow (MGD)	%	Mg/L	mL/Min	GPD	
Cl2 (gal.)	4,800	Cl2 (%)	60	ACH	8.6	50	8.0	271	103
Pumps And Meter Reads		Filtration Chemical Dosage							
Eff Pump #1 (100 cf)	1512762	Pump #	%	Mg/L	mL/Min	GPD			
Eff Pump #2 (100 cf)	4266279	ACH	5	50	2.0	95	36		
Eff Pump #3 (100 cf)	614426	Pre Cl2	1	12.5	1.0	221	84		
Eff Pump #4 (100 cf)	465907	Post Cl2	2	12.5	2.0	442	168		
Eff Pump #5 (100 cf)	1296167	24 Hour Turbidity							
Eff Pump #6 (100 cf)	1169683	4AM	8AM	12PM	4PM	8PM	12AM		
Total Influent Meter Totalizer, LC and SPW (1,000 cf)	1061538	Inf	0.344	0.649	0.268	0.257	0.213	0.184	
SPW Purchased Flow Rate (cfs)	8	Eff	0.067	0.059	0.115	0.072	0.105	0.069	
SPW Meter Totalizer (10,000 gals.)	467401069	Plant Cl2	1.82	1.82	2.00	1.35	1.32	1.45	
City of Rialto Meter Totalizer (100 cf)	146627	GAC Vessels							
Decant Meter (100 cf)	370966	GPM	Inlet PSI	Head Loss: Lead/Lag	Blending pond				
LC Meter Totalizer (1,000 gals.)	3874236	Meter #1	650	20.0	8.0	3.0	Time	Level	

Oliver P. Roemer Water Filtration Facility Log Sheet

Operator: Sergio Granda		SG	Plant Flow: 8.64	Date: 03/13/20					
Segment 1		Pre-Treatment		Filtration					
Highest Daily Flow GPM	6000	Inf.	Eff.	Inf.	Eff.				
Low Contact Chamber Level Ft.	8.4	Temp. C	12.1	12.4	Temp. C	13.1	12.8		
Low Cl2 Contact Chamber Mg/L	1.29	pH	7.30	7.41	pH	7.30	7.20		
Segment 2		Alk.	62	81	Alk.	334	181		
Low Cl2 Transmission Main Mg/L	1.39	TOC	3.16	2.82	TOC	2.454	1.660		
Segment 3		TDS	176	165	TDS	176	181		
Low Zone 5 Reservoir Level Ft.	9.5	NTU	0.485	0.230	Alum	0.048	0.009		
Low Cl2 Residual Zone 5 Mg/L	1.70	Pre-Treatment GPM	4841	100% Lytle: <input type="checkbox"/> Yes <input checked="" type="checkbox"/> No					
Filters Operating: <input checked="" type="checkbox"/> 1 <input checked="" type="checkbox"/> 2 <input checked="" type="checkbox"/> 3 <input checked="" type="checkbox"/> 4 <input checked="" type="checkbox"/> 5 <input checked="" type="checkbox"/> 6		Trains Operating: <input checked="" type="checkbox"/> 1 <input checked="" type="checkbox"/> 2 <input checked="" type="checkbox"/> 3		Lytle GPM	0				
Time	CFS	Flume	Total GPM	Rialto GPM	Decant	SPW GPM	4100		
8:00 AM	3.0	6.0	1095	OFF	NTU	1.18	Ratio Lytle To SPW:		
2:00 PM	3.0	6.0	1095	OFF	Rec. GPM	520	8.7%	% Lytle	0
Chemical Storage		0	Basin Recycled	<input checked="" type="checkbox"/> 1 <input type="checkbox"/> 2 <input type="checkbox"/> 3	% SPW			100	
Filtration	Pre-Treat.		Pre Treatment Chemical Dosage						
ACH (gal.)	4,750	ACH (gal)	3920	Flow (MGD)	%	Mg/L	mL/Min	GPD	
Cl2 (gal.)	4,640	Cl2 (%)	58	ACH	7.0	50	5.0	136	52
Pumps And Meter Reads		Filtration Chemical Dosage							
Eff Pump #1 (100 cf)	1515471	Pump #	%	Mg/L	mL/Min	GPD			
Eff Pump #2 (100 cf)	4267399	ACH	5	50	1.0	34	13		
Eff Pump #3 (100 cf)	615219	Pre Cl2	1	12.5	1.0	158	60		
Eff Pump #4 (100 cf)	466238	Post Cl2	2	12.5	2.0	316	120		
Eff Pump #5 (100 cf)	1298490	24 Hour Turbidity							
Eff Pump #6 (100 cf)	1171105	4AM	8AM	12PM	4PM	8PM	12AM		
Total Influent Meter Totalizer, LC and SPW (1,000 cf)	1062443	Inf	0.118	0.333	0.229	0.257	0.317	0.339	
SPW Purchased Flow Rate (cfs)	9	Eff	0.056	0.080	0.061	0.061	0.042	0.036	
SPW Meter Totalizer (10,000 gals.)	473754479	Plant Cl2	1.95	2.02	1.50	2.09	2.05	1.91	
City of Rialto Meter Totalizer (100 cf)	148636	GAC Vessels							
Decant Meter (100 cf)	372499	GPM	Inlet PSI	Head Loss: Lead/Lag	Blending pond				
LC Meter Totalizer (1,000 gals.)	3877278	Meter #1	1.0	20.0	8.0	3.0	Time	Level	

Spreadsheets Operator Logs

Date	LC Meter Totalizer (1,000 gal.) gals..		Total AC/Ft LC water sent to ponds	
3/12/2020	3870966			
3/13/2020	3877278	Diverted to ponds		
3/14/2020	3878677			
3/15/2020	3880077			
3/16/2020	3881476	LC water taken to WTF	12.88125192	
3/17/2020	3881520	Diverted to ponds		
3/18/2020	3881520			
3/19/2020	3882739	LC water taken to WTF	3.740411169	
3/30/2020	3899118	Diverted to ponds		
3/31/2020	3899118			
4/1/2020	3899118			
4/2/2020	3899118			
4/3/2020	3899326	LC water taken to WTF	0.638232587	
12/27/2020	5610869			
12/28/2020	5617810	Diverted to ponds		
12/29/2020	5624405	LC water taken to WTF	20.23626879	
			37.49616447	Total AC/ft sent to ponds 2020

Total 2020 Recharge Summary

WVWD discharged 37.50 acre feet into recharge ponds

Duration	Acre feet (AF)
3/12/20 to 3/16/20	12.88
3/17/20 to 3/19/20	3.74
3/30/20 to 4/3/20	0.64
12/27/20 to 12/29/20	20.24
Total discharged into Recharge Ponds in 2020	37.50

37.50 AF Distribution

WVWD – 18.38 AF (49%)

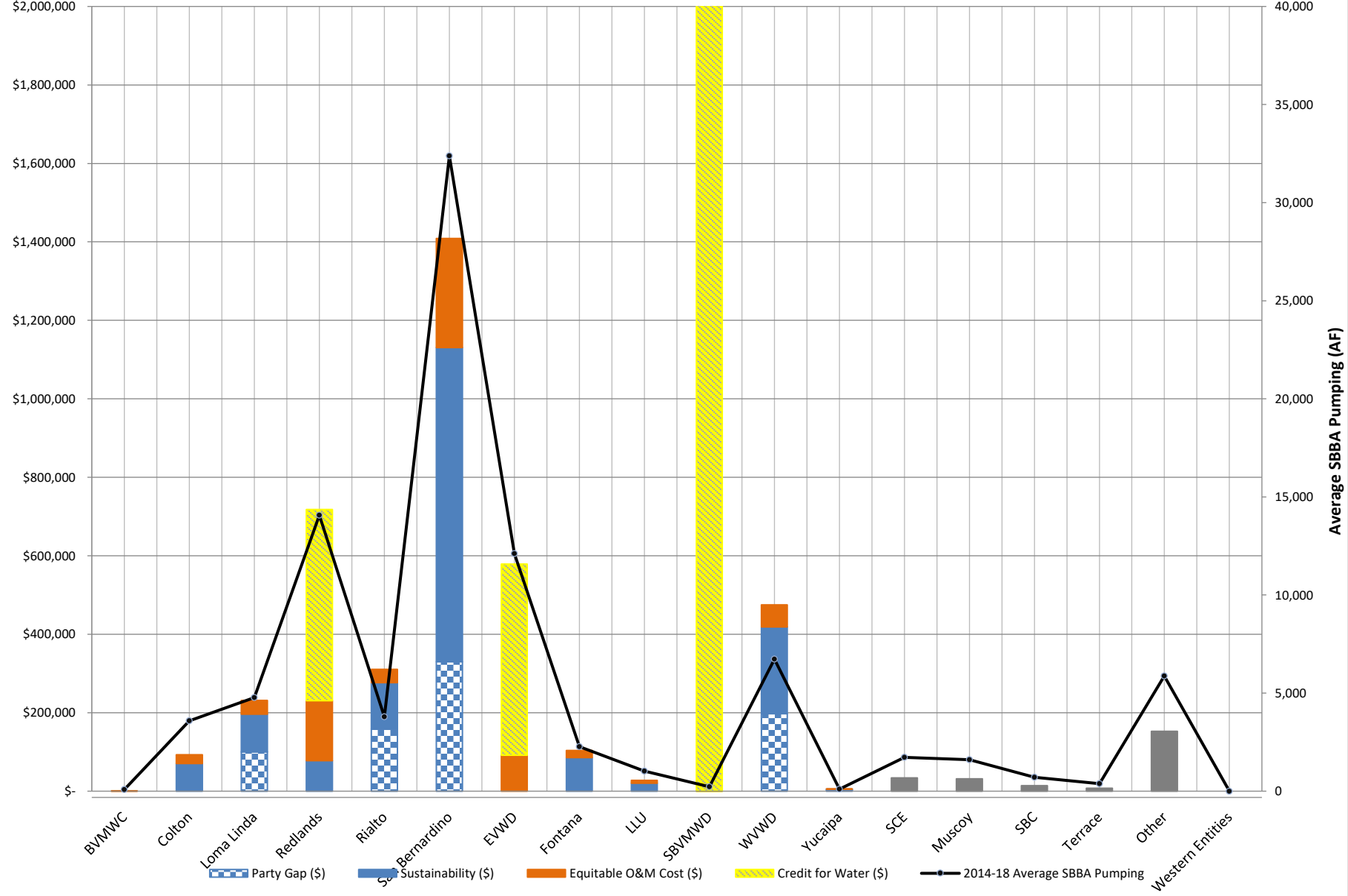
Rialto – 8.25 AF (22%)

San Bernardino – 10.88 AF (29%)

Groundwater Council Equitable Allocation Budget for FY 2021-22

Agency	Party Gap FY21-2 (AF)	Sustainability FY21-22 (AF)	Total Equitable Water Cost FY21-22 (\$)	Water Corrections for Previous Years (\$)	Total Water Cost with Corrections (\$)	Total Water with Corrections (AF)	Equitable O&M Costs FY21-22 (\$)	O&M Corrections for Previous Years (\$)	Total O&M Cost with Corrections (\$)	Total Party Costs FY21-22 (\$)	Voting Weight 2020-21
Bear Valley Mutual Water Company	-	-	\$ -	\$ -	\$ -	0	\$ 112	\$ -	\$ 112	\$ 112	0.00%
City of Colton	-	597	\$ 70,642	\$ 653	\$ 71,295	602	\$ 22,031	\$ (87)	\$ 21,944	\$ 93,239	3.1%
City of Loma Linda	846	810	\$ 196,040	\$ (304)	\$ 195,736	1653	\$ 35,370	\$ (121)	\$ 35,249	\$ 230,985	7.8%
City of Redlands	-	659	\$ 77,986	\$ (197,069)	\$ (119,082)	-1006	\$ 152,860	\$ (446)	\$ 152,415	\$ 33,332	7.8%
City of Rialto	1,335	1,001	\$ 276,696	\$ (361)	\$ 276,334	2334	\$ 33,954	\$ (127)	\$ 33,827	\$ 310,161	10.4%
City of San Bernardino	2,787	6,762	\$ 1,130,683	\$ (2,987)	\$ 1,127,696	9524	\$ 278,083	\$ (930)	\$ 277,153	\$ 1,404,849	47.3%
East Valley Water District	-	-	\$ -	\$ 3,087	\$ 3,087	26	\$ 91,896	\$ (342)	\$ 91,554	\$ 94,641	3.1%
Fontana Union Water Company	-	723	\$ 85,559	\$ 1,313	\$ 86,872	734	\$ 18,235	\$ 2,288	\$ 20,524	\$ 107,396	3.5%
Loma Linda University	-	170	\$ 20,173	\$ 167	\$ 20,341	172	\$ 7,194	\$ (23)	\$ 7,171	\$ 27,511	0.9%
San Bernardino Valley M.W.D.	-	-	\$ -	\$ 19	\$ 19	0	\$ 11	\$ (8)	\$ 3	\$ 22	0.0%
West Valley Water District	1,670	1,864	\$ 418,429	\$ 1,498	\$ 419,927	3547	\$ 56,364	\$ (199)	\$ 56,165	\$ 476,092	15.9%
Yucaipa Valley Water District	26	18	\$ 5,188	\$ (4)	\$ 5,183	44	\$ 689	\$ (4)	\$ 685	\$ 5,868	0.2%
Total GC Parties:	6,664	12,604	\$ 2,281,396	\$ (193,987)	\$ 2,087,409	17630	\$ 696,800	\$ 0	\$ 696,800	\$ 2,784,209	100%
Mountain View Power Co.	-	286	\$ 33,841	\$ (70)	\$ 33,772	285	#N/A	\$ -	#N/A	\$ 33,772	#N/A
Muscoy Mutual Water Company No. 1	-	266	\$ 31,509	\$ 235	\$ 31,744	268	#N/A	\$ -	#N/A	\$ 31,744	#N/A
San Bernardino County - Facility Management	-	119	\$ 14,035	\$ 105	\$ 14,139	119	#N/A	\$ -	#N/A	\$ 14,139	#N/A
Terrace Water Company	-	63	\$ 7,506	\$ 83	\$ 7,589	64	#N/A	\$ -	#N/A	\$ 7,589	#N/A
Other Inside SBVWCD	-	1,086	\$ 128,593	\$ (5)	\$ 128,588	1086	#N/A	\$ -	#N/A	\$ 128,588	#N/A
Other Outside SBVWCD	-	202	\$ 23,975	\$ (1)	\$ 23,974	202	#N/A	\$ -	#N/A	\$ 23,974	#N/A
San Bernardino Non-Parties Total:	-	2,022	\$ 239,459	\$ 347	\$ 239,806	2025	\$ -	\$ -	\$ -	\$ 239,806	0%
Western Entities Total:	-	-	-	-	-	0	\$ -	\$ -	-	\$ -	0%
Total:	6,664	14,627	\$ 2,520,855	\$ (193,640)	\$ 2,327,214	19656	\$ 696,800	\$ 0	\$ 696,800	\$ 3,024,014	100%

GC EAM 2021-2022 Fiscal Year Annual O&M and SWP for Ultimate Sustainability (2040)



Calculation for FY 2021-22

Calculation for 2021-22											
Precipitation Adjustment		0%	Sustainable Amount (AF)		28,823	Base Period Safe Yield		72.05%	167,238	Present Period Safe Yield	
Recharge		95%	Budgeted Water Cost		\$ 3,412,643	Non-Plaintiff		5.507	172,745	New Conservation Present Safe Yield	
Direct Use		100%	Budgeted O&M Cost SBVWCD		\$ 624,000	Plaintiff		27.95%	64,862	Present Safe Yield	
SWP Cost Recharge (S/AF)		\$ 118	Budgeted O&M Cost SBFCFD		\$ 72,800						
			Budgeted Admin Costs		\$ -						

Base Period		1959-1963 Base Period SBBA Production (AF)					Total Average Use, 1959-1963				Safe Yield Distribution				Total SBBA Demand	Groundwater	Average Surface Water	Total Base Period	
Agency	Abbreviation	1959	1960	1961	1962	1963	1959-63 Average GW + SW (AF)	Other Distribution	Recycled Water ₂₀₁₅₋₁₉ (AF)	1959-1963 Total Average Use (AF)	% of Total	Safe Yield ₂₀₁₅₋₁₉ (AF)	Safe Yield % of Total	SW ₂₀₁₅₋₁₉ (AF)	GWSY ₂₀₁₅₋₁₉ (AF)	Demand _{Present Year} (2019)	GWSY ₂₀₁₅₋₁₉ (AF)	SW ₂₀₁₅₋₁₉ (AF)	Gap ₂₀₁₅₋₁₉ (AF)
Bear Valley Mutual Water Company	BVMW/C	16,855	13,583	14,273	11,626	9,831	13,234	574	-	13,807	7.76%	12,976	5.59%	8,344	4,632	(6,574)	4,632	8,344	6,402
City of Colton	Colton	2,814	3,608	3,305	3,743	3,267	3,347	-	-	3,347	1.88%	3,146	1.36%	-	3,146	(2,943)	3,146	-	293
City of Loma Linda	Loma Linda	0	0	0	0	0	0	-	-	0	0.00%	0	0.00%	-	0	(4,725)	0	-	(4,725)
City of Redlands	Redlands	19,378	18,911	18,736	20,758	16,676	19,098	7,092	2,068	26,258	15.88%	26,558	11.44%	6,864	10,604	(30,777)	10,604	6,864	(4,219)
City of Rialto	Rialto	1,659	795	959	1,068	1,397	1,176	833	-	2,008	1.13%	1,888	0.81%	617	1,270	(5,932)	617	1,270	(4,044)
City of San Bernardino	SBVWCD	17,268	16,099	18,448	17,575	16,456	17,169	3,468	-	20,637	11.60%	19,395	8.36%	1,206	18,189	(37,148)	18,189	1,206	(17,753)
East Valley Water District	EWVD	6,545	6,900	7,674	7,144	7,540	7,161	7,562	-	14,723	8.27%	13,837	5.96%	57	13,779	(16,311)	13,779	57	(2,475)
Fontana Union Water Company	FWC	19,841	15,843	13,295	14,674	12,086	15,109	-	-	15,109	8.49%	14,200	6.12%	6,688	7,312	(6,045)	7,312	6,688	8,155
Loma Linda University	LLU	1,011	1,116	1,202	1,146	901	1,079	-	-	1,079	0.61%	1,034	0.44%	-	1,034	(951)	1,034	-	83
Mountain View Power Co.	MVPC	1,410	1,219	1,425	725	744	1,105	-	-	1,105	0.62%	1,038	0.45%	-	1,038	(1,251)	1,038	-	(213)
Muscoy Mutual Water Company No. 1	MMWC	1,943	1,870	2,028	1,863	1,684	1,878	-	-	1,878	1.06%	1,765	0.76%	-	1,765	(1,571)	1,765	-	194
San Bernardino County - Facility Management	SCF	636	615	809	564	386	602	825	-	1,427	0.80%	1,341	0.58%	-	1,341	(770)	1,341	-	574
San Bernardino Valley M.W.D.	SBVWMD	0	0	0	0	0	0	-	-	0	0.00%	0	0.00%	-	0	(1)	0	-	(1)
Terrace Water Company	Terrace	1,318	921	1,077	1,017	899	1,045	-	-	1,045	0.59%	982	0.42%	-	982	(205)	982	-	779
West Valley Water District	WVWD	13,584	12,090	13,587	11,331	11,837	12,486	-	-	12,486	7.02%	11,734	5.06%	3,588	8,147	(14,336)	8,147	3,588	(2,602)
Yucca Valley Water District	YVWD	0	0	0	0	0	0	-	-	0	0.00%	0	0.00%	-	0	(92)	0	-	(92)
Other Inside SBVWCD	Other	74,763	71,441	75,229	71,633	65,451	71,642	(19,164)	-	52,477	29.49%	49,319	21.25%	5,886	43,433	(5,865)	43,433	5,886	43,454
Other Outside SBVWCD	Other	11,218	8,562	8,889	10,240	8,563	9,514	(9,225)	-	6,590	3.70%	6,193	2.67%	-	6,193	(922)	6,193	-	5,271
Non-Plaintiff Total:		190,243	174,107	181,037	175,103	157,729	175,644	-	2,303	177,947	100%	167,238	72.05%	33,250	133,988	(136,430)	133,988	33,250	30,808
Plaintiff Total:		70,373	64,867	70,944	65,102	60,983	64,862	-	-	-	-	64,862	27.95%	-	-	64,862	-	-	-
Total:		260,616	238,974	251,981	240,205	218,712	240,506	-	-	-	-	232,100	100%	33,250	198,850	-	-	-	-

Current (last 5 years)		Present Period Net SBBA GW + SW Production (AF)					Total Average Use, 2015-2019 (AF)				Safe Yield Distribution				Total SBBA Demand	Groundwater	Average Surface Water	Recycled Water (RUWMP, 2015)	Total Present Period			
Agency	Abbreviation	2015	2016	2017	2018	2019	Average SBBA Use 2015-19 (AF)	SWP (AF)	Recycled Water _{Present Year} (AF)	Party Water Use (AF)	% of Total	Safe Yield _{Last 5 Years} (AF)	Safe Yield % of Total	SW _{Last 5 Years} (AF)	GWSY _{Last 5 Years} (AF)	Demand _{Present Year} (2019)	GWSY _{Last 5 Years} (AF)	SW _{Last 5 Years} (AF)	New Direct Recycled (AF)	New Recharge Recycled (AF)	Net New Recycled _{Present Year} (AF)	Gap _{Last 5 Years}
Bear Valley Mutual Water Company	BVMW/C	4,229	8,928	10,332	10,220	6,574	8,057	1,184	-	9,241	6.5%	11,216	4.68%	7,972	3,244	(6,574)	3,244	7,972	-	-	-	4,641
City of Colton	Colton	4,405	3,044	3,842	3,699	2,943	3,586	-	-	3,586	2.5%	4,352	1.82%	-	4,352	(2,943)	4,352	-	-	-	-	1,409
City of Loma Linda	Loma Linda	4,670	4,208	5,070	5,158	4,725	4,766	100	-	4,866	3.4%	5,906	2.46%	-	5,906	(4,725)	5,906	-	-	-	-	1,181
City of Redlands	Redlands	25,034	22,031	25,328	25,227	23,596	24,283	292	4,115	28,690	20.2%	34,821	14.52%	10,211	24,609	(30,777)	24,609	10,211	6,183	-	-	4,115
City of Rialto	Rialto	5,215	4,429	3,149	6,411	4,922	5,097	-	-	6,019	4.2%	7,305	3.05%	1,127	6,179	(5,932)	6,179	1,127	-	-	-	1,373
City of San Bernardino	SBVWCD	32,503	23,588	29,154	29,524	37,148	32,383	8,258	-	40,641	28.6%	49,326	20.57%	-	49,326	(37,148)	49,326	-	-	-	-	12,178
East Valley Water District	EWVD	18,876	13,014	20,103	19,989	17,143	17,825	2,406	-	20,231	14.2%	24,555	10.24%	5,714	18,840	(16,311)	18,840	5,714	-	-	-	8,243
Fontana Union Water Company	FWC	3,761	2,650	4,112	5,147	4,343	4,343	-	-	5,271	2.20%	5,271	2.20%	2,080	3,191	(6,045)	3,191	2,080	-	-	-	(774)
Loma Linda University	LLU	1,164	1,019	990	986	961	1,024	-	-	1,024	0.7%	1,243	0.52%	-	1,243	(951)	1,243	-	-	-	-	292
Mountain View Power Co.	MVPC	2,373	2,014	1,889	862	1,251	1,718	-	-	1,718	1.2%	2,085	0.87%	-	2,085	(1,251)	2,085	-	-	-	-	834
Muscoy Mutual Water Company No. 1	MMWC	1,591	1,534	1,652	1,649	1,571	1,599	-	-	1,599	1.1%	1,941	0.81%	-	1,941	(1,571)	1,941	-	-	-	-	370
San Bernardino County - Facility Management	SCF	647	458	841	846	770	712	-	-	712	0.5%	865	0.36%	-	865	(770)	865	-	-	-	-	95
San Bernardino Valley M.W.D.	SBVWMD	648	-	-	445	1	220	-	-	220	0.2%	267	0.11%	-	267	(1)	267	-	-	-	-	265
Terrace Water Company	Terrace	473	420	464	343	205	381	-	-	381	0.3%	462	0.19%	-	462	(205)	462	-	-	-	-	257
West Valley Water District	WVWD	10,285	8,749	9,226	11,008	13,126	10,079	1,128	-	11,205	7.9%	13,599	5.67%	3,350	10,249	(14,336)	10,249	3,350	-	-	-	(777)
Yucca Valley Water District	YVWD	5	12	110	178	92	109	-	-	109	0.1%	133	0.06%	-	133	(92)	133	-	-	-	-	370
Other Inside SBVWCD	Other	7,398	8,413	5,473	5,915	5,836	6,207	320	-	6,527	4.6%	7,922	3.30%	923	7,000	(5,865)	7,000	923	-	-	-	2,057
Other Outside SBVWCD	Other	1,025	1,820	1,323	995	922	1,217	-	-	1,217	0.9%	1,477	0.62%	627	850	(922)	850	627	-	-	-	555
San Bernardino Entities Total:		124,502	102,480	123,258	138,601	128,316	123,432	14,784	4,115	142,330	100%	172,745	72.05%	32,003	140,741	(136,430)	140,741	32,003	6,183	-	-	4,115
Western Entities Total:		-	-	-	-	-	66,998	-	-	-	-	66,998	27.95%	-	-	-	-	-	-	-	-	-
Total:		124,502	102,480	123,258	138,601	128,316	190,430	-	-	-	-	239,743	100%	32,003	140,741	-	-	-	-	-	-	-

BUDGET - FY2021-22 Calculation													
Agency	Party Gap (AF) (Gap ₂₀₁₅₋₁₉ + Gap ₂₀₁₅₋₁₉)/2	Water Use (%)	Equitable Water Costs				Equitable O&M Costs				Total (2021-22)		
			Sustainability (AF)	Total Water (AF)	Credit for Water (AF)	Total Water after Credit (AF)	Estimated Total Water Cost (\$)	Proportion of Total Pumping	Equitable O&M Costs	Equitable Admin Costs	Estimated Total Party Costs (\$)	Voting Weight 2020-2021	
Bear Valley Mutual Water Company	0	0.1%	14	14	3,736	-	5	-	0.01%	\$ 112	\$ -	\$ 112	0.0%
City of Colton	0	2.7%	597	597	-	5	70,642	-	2.1%	\$ 22,031	\$ -	\$ 92,672	3.1%
City of Loma Linda	846	3.7%	8,710	1,656	-	1,656	\$ 196,040	3.3%	\$ 35,370	\$ -	\$ 231,410	7.8%	
City of Redlands	0	21.5%	4,776	659	4,115	659	\$ 77,896	24.4%	\$ 152,860	\$ -	\$ 230,847	8.0%	
City of Rialto	1,235	4.5%	1,001	2,337	-	2,337	\$ 276,696	3.2%	\$ 33,954	\$ -	\$ 310,650	10.4%	
City of San Bernardino	2,787	30.5%	6,762	9,550	-	9,550	\$ 1,130,683	26.2%	\$ 278,083	\$ -	\$ 1,408,767	47.3%	
East Valley Water District	0	15.2%	3,366	3,366	4,114	-	5	-	8.6%	\$ 91,896	\$ -	\$ 91,896	3.1%
Fontana Union Water Company	0	3.3%	723	723	-	723	\$ 85,559	1.7%	\$ 18,235	\$ -	\$ 103,794	3.5%	
Loma Linda University	0	0.8%	170	170	-	170	\$ 20,173	0.7%	\$ 7,194	\$ -	\$ 27,367	0.9%	
Mountain View Power Co.	0	0.2%	37	37	25,506	-	5	-	0.0%	\$ 11	\$ -	\$ 11	0.0%
Muscoy Mutual Water Company No. 1	3,670	8.4%	1,864	3,534	-	3,534	\$ 418,429	8.1%	\$ 56,364	\$ -	\$ 474,793	15.0%	
San Bernardino County - Facility Management	0	0.1%	18	44	-	44	\$ 5,188	0.1%	\$ 689	\$ -	\$ 5,876	0.2	

Agency	FY 2021-22			FY 2020-21 Corrections				FY 2020-21				FY 2019-20 Corrections				FY 2019-20				FY 2018-19 Corrections				FY 2018-19										
	Total Due to Date	Total Due to SBWWD	Total Due to SBWCD	Water Cost 2021-22 (\$)	Total Paid to SBWWD in 2020	Equitable O&M Costs 21-22 (\$)	Total Paid to SBWCD in 2020	Fontana SOVWC Water Correction FY20-21	Fontana SOVWC O&M Correction FY20-21	Base Period W/M Correction	Redlands Recycled Correction 2016	Water Cost 2020-21 (\$)	Total Paid to SBWWD in 2020	Equitable O&M Costs 20-21 (\$)	Total Paid to SBWCD in 2020	WVWD O&M Correction 2017	Baseline Feeder Agreement 2016	San Bernardino Watermaster Correction Water	San Bernardino Watermaster Correction O&M	Baseline Feeder Agreement 2017	Redlands Recycled Correction 2017	Water Cost 2019-20 (\$)	Total Paid to SBWWD in 2019	Equitable O&M Costs 2019-20 (\$)	Total Paid to SBWCD in 2019	Pumping Adjustments Water Correction	Fontana Water Correction	Fontana O&M Correction	Baseline Feeder Agreement 2016	Water Cost 2018-19 (\$)	Total Paid to SBWWD in 2018	Equitable O&M Costs 2018-19 (\$)	Total Paid to SBWCD in 2018	
Bear Valley Mutual Water Company	\$ 90	\$ (143)	\$ -	\$ -	\$ -	\$ 112	\$ -	\$ -	\$ -	\$ -	\$ -	\$ -	\$ -	\$ -	\$ -	\$ -	\$ -	\$ -	\$ -	\$ -	\$ -	\$ -	\$ -	\$ -	\$ -	\$ -	\$ -	\$ -	\$ -	\$ -	\$ -	\$ -	\$ -	\$ -
City of Colton	\$ 198,544	\$ 154,174	\$ 45,370	\$ 70,642	\$ -	\$ 32,033	\$ -	\$ -	\$ (97)	\$ 60	\$ 593	\$ -	\$ -	\$ -	\$ (2,821)	\$ -	\$ 13,056	\$ 1,645	\$ -	\$ 22	\$ -	\$ 46,608	\$ 62,297	\$ 28,336	\$ 28,046	\$ 80	\$ (3,893)	\$ (550)	\$ -	\$ 93,875	\$ 92,234	\$ 23,240	\$ 23,240	
City of Loma Linda	\$ 518,626	\$ 450,584	\$ 68,043	\$ 356,040	\$ -	\$ 36,370	\$ -	\$ -	\$ (321)	\$ (60)	\$ (212)	\$ -	\$ -	\$ -	\$ 52,624	\$ -	\$ 13,833	\$ 2,170	\$ -	\$ (14)	\$ -	\$ 221,252	\$ 226,252	\$ 37,736	\$ 36,585	\$ 88	\$ (6,250)	\$ (814)	\$ -	\$ 210,718	\$ 210,514	\$ 35,925	\$ 35,925	
City of Redlands	\$ 4,090,817	\$ 802,084	\$ 2,78,733	\$ 77,886	\$ -	\$ 152,860	\$ -	\$ -	\$ (446)	\$ 458	#####	\$ 119,000	\$ -	\$ 126,319	\$ -	\$ -	\$ 102,003	\$ -	\$ -	#####	\$ -	\$ 516,253	\$ -	\$ N/A	\$ N/A	\$ 599	\$ (25,120)	\$ (2,228)	\$ -	\$ 569,400	\$ -	\$ 106,757	\$ N/A	
City of Redondo	\$ 777,038	\$ 654,112	\$ 88,324	\$ 276,696	\$ -	\$ 33,954	\$ -	\$ -	\$ (177)	\$ (73)	\$ (299)	\$ 399,639	\$ -	\$ 36,059	\$ -	\$ 10,212	\$ 50,765	\$ 19,447	\$ 1,856	\$ 29,728	\$ (13)	\$ 144,051	\$ 135,696	\$ 33,273	\$ 31,267	\$ (3,298)	\$ -	\$ (998)	\$ -	\$ 264,632	\$ 265,281	\$ 38,250	\$ 38,250	
City of San Bernardino	\$ 4,656,396	\$ 2,160,083	\$ 996,303	\$ 1,320,681	\$ -	\$ 278,082	\$ -	\$ -	\$ (909)	\$ 11,320	\$ (1,862)	\$ 1,241,235	\$ -	\$ 281,064	\$ -	\$ (13,795)	\$ -	\$ 109,750	\$ 110,921	\$ -	\$ (72)	\$ 1,150,395	\$ 1,176,247	\$ 314,279	\$ 1,099,161	\$ 777	\$ (7,700)	\$ (6,576)	\$ -	\$ 1,138,939	\$ 1,143,297	\$ 272,164	\$ 272,164	
East Valley Water District	\$ 419,630	\$ 235,889	\$ 181,741	\$ -	\$ -	\$ 91,896	\$ -	\$ -	\$ (842)	\$ 87	\$ (275)	\$ 167,235	\$ -	\$ 36,064	\$ -	\$ (11,289)	\$ -	\$ 65,495	\$ 6,513	\$ -	\$ 108	\$ 212,337	\$ 193,656	\$ 111,237	\$ 110,925	\$ 776	\$ (18,180)	\$ (2,312)	\$ -	\$ 345,898	\$ 347,010	\$ 62,656	\$ 62,656	
Esports Union Water Company	\$ 216,400	\$ 178,841	\$ 41,959	\$ 35,359	\$ -	\$ 18,235	\$ -	\$ 1,250	\$ 2,288	\$ 61	\$ -	\$ 71,090	\$ -	\$ 21,653	\$ -	\$ (14)	\$ 14,781	\$ 297	\$ -	\$ 24	\$ -	\$ 76,357	\$ 196,070	\$ 5,358	\$ 20,400	\$ -	\$ -	\$ (20,921)	\$ 15,243	\$ -	\$ -	\$ -		
Loma Linda University	\$ 96,154	\$ 42,900	\$ 13,433	\$ 20,173	\$ -	\$ 7,194	\$ -	\$ -	\$ (23)	\$ 16	\$ 151	\$ 19,104	\$ -	\$ 6,573	\$ -	\$ (79)	\$ 3,443	\$ 424	\$ -	\$ 6	\$ -	\$ 17,566	\$ 16,458	\$ 7,369	\$ 7,184	\$ 20	\$ (994)	\$ (184)	\$ -	\$ 23,451	\$ 23,562	\$ 7,780	\$ 7,780	
San Bernardino Valley M.W.D.	\$ 78,938	\$ 21,509	\$ 7,369	\$ 11	\$ -	\$ 11	\$ -	\$ -	\$ (8)	\$ 1	\$ 11	\$ 21,962	\$ -	\$ 2,267	\$ -	\$ -	\$ 1,509	\$ -	\$ -	\$ -	\$ -	\$ 9,006	\$ -	\$ N/A	\$ -	\$ (5,977)	\$ -	\$ (1,318)	\$ -	\$ 1,987	\$ -	\$ -	\$ -	
West Valley Water District	\$ 1,226,966	\$ 1,006,248	\$ 220,748	\$ 418,429	\$ -	\$ 46,364	\$ -	\$ -	\$ (198)	\$ 161	\$ 1,137	\$ 186,276	\$ -	\$ 56,378	\$ -	\$ 69,835	\$ 131,379	\$ 32,866	\$ -	\$ 58	\$ -	\$ 68,903	\$ -	\$ N/A	\$ -	\$ 4,202	\$ (8,811)	\$ (1,318)	\$ -	\$ 207,215	\$ -	\$ 15,688	\$ -	
Yuraisa Valley Water District	\$ 77,481	\$ 75,645	\$ 1,836	\$ 5,188	\$ -	\$ 689	\$ -	\$ -	\$ (4)	\$ 2	\$ (6)	\$ 14,259	\$ -	\$ 1,187	\$ -	\$ (82)	\$ -	\$ 55,688	\$ 47	\$ (8)	\$ -	\$ 6,997	\$ 6,275	\$ 819	\$ 790	\$ 2	\$ (108)	\$ (29)	\$ -	\$ 13,379	\$ 13,379	\$ 1,237	\$ 1,237	
Total GC Parties:	\$ 7,299,265	\$ 5,788,095	\$ 1,421,170	\$ 2,281,396	\$ -	\$ 696,800	\$ -	\$ 1,250	\$ 0	\$ (201)	#####	\$ 2,565,078	\$ -	\$ 670,000	\$ -	\$ -	\$ 172,144	\$ 14,343	\$ (6)	\$ 148,592	#####	\$ 2,908,912	\$ 2,362,330	\$ 540,000	\$ 543,847	\$ (243)	\$ (1,843)	\$ -	#####	\$ 2,895,506	\$ 2,124,096	\$ 643,822	\$ 481,377	
Mountain View Power Co.	\$ 187,433	\$ 187,432	\$ N/A	\$ 33,841	\$ -	\$ N/A	\$ -	\$ -	\$ -	\$ 30	\$ (1,050)	\$ 35,104	\$ -	\$ N/A	\$ -	\$ -	\$ 6,262	\$ -	\$ -	\$ -	\$ -	\$ 44,732	\$ -	\$ N/A	\$ N/A	\$ 41	\$ (2,016)	\$ -	\$ -	\$ 69,538	\$ -	\$ N/A	\$ N/A	
Mussey Mutual Water Company Ass.	\$ 373,538	\$ 183,659	\$ N/A	\$ 33,959	\$ -	\$ N/A	\$ -	\$ -	\$ -	\$ 25	\$ 236	\$ 38,674	\$ -	\$ N/A	\$ -	\$ -	\$ 5,074	\$ -	\$ -	\$ -	\$ -	\$ 26,888	\$ -	\$ N/A	\$ N/A	\$ 28	\$ (1,370)	\$ -	\$ -	\$ 34,999	\$ -	\$ N/A	\$ N/A	
San Bernardino County - Facility Management	\$ 44,700	\$ 44,700	\$ N/A	\$ 14,033	\$ -	\$ N/A	\$ -	\$ -	\$ -	\$ 11	\$ 98	\$ 15,025	\$ -	\$ N/A	\$ -	\$ -	\$ 2,772	\$ -	\$ -	\$ -	\$ -	\$ 13,537	\$ -	\$ N/A	\$ N/A	\$ 13	\$ (6)	\$ (54)	\$ -	\$ 14,513	\$ -	\$ N/A	\$ N/A	
Terrace Water Company	\$ 37,693	\$ 37,693	\$ N/A	\$ 7,506	\$ -	\$ N/A	\$ -	\$ -	\$ -	\$ 7	\$ 76	\$ 8,288	\$ -	\$ N/A	\$ -	\$ -	\$ 1,705	\$ -	\$ -	\$ -	\$ -	\$ 6,699	\$ -	\$ N/A	\$ N/A	\$ 10	\$ (504)	\$ -	\$ -	\$ 13,907	\$ -	\$ N/A	\$ N/A	
Other Combined	\$ 622,416	\$ 622,416	\$ N/A	\$ 152,568	\$ -	\$ N/A	\$ -	\$ (1,250)	\$ -	\$ 127	\$ 1,117	\$ 147,347	\$ -	\$ N/A	\$ -	\$ -	\$ 25,673	\$ -	\$ -	\$ -	\$ -	\$ 130,978	\$ -	\$ N/A	\$ N/A	\$ 151	\$ (7,332)	\$ -	\$ -	\$ 179,037	\$ -	\$ N/A	\$ N/A	
San Bernardino Non-Parties Total:	\$ 1,024,651	\$ 1,024,651	\$ -	\$ 429,459	\$ -	\$ -	\$ -	\$ (1,250)	\$ -	\$ 200	\$ 1,397	\$ 232,038	\$ -	\$ -	\$ -	\$ -	\$ 40,992	\$ -	\$ -	\$ -	\$ -	\$ 221,914	\$ -	\$ -	\$ -	\$ 243	\$ (1,843)	\$ -	\$ -	\$ 301,502	\$ -	\$ -	\$ -	
Western Entities Total:	\$ -	\$ -	\$ -	\$ -	\$ -	\$ -	\$ -	\$ -	\$ -	\$ -	\$ -	\$ -	\$ -	\$ -	\$ -	\$ -	\$ -	\$ -	\$ -	\$ -	\$ -	\$ -	\$ -	\$ -	\$ -	\$ -	\$ -	\$ -	\$ -	\$ -	\$ -	\$ -	\$ -	
Total:	\$ 8,233,916	\$ 6,812,746	\$ 1,421,170	\$ 2,520,855	\$ -	\$ 696,800	\$ -	\$ (6)	\$ 0	\$ (1)	#####	\$ 2,797,116	\$ -	\$ 670,000	\$ -	\$ -	\$ 172,144	\$ 55,334	\$ (6)	\$ 148,592	#####	\$ 3,130,826	\$ 2,362,330	\$ 540,000	\$ 543,847	\$ -	\$ 0	\$ -	#####	\$ 3,197,008	\$ 2,124,096	\$ 643,822	\$ 481,377	

Extraction Data and Adjustments

Agency	Verified Total Extractions										Pumping Adjustments					Other Distribution Verified Extractions					Credits for Water to the Basin						
	1959	1960	1961	1962	1963	2015	2016	2017	2018	2019	2015	2016	2017	2018	2019	1959	1960	1961	1962	1963	AVG	2019	1959-63	2019	2019		
Bear Valley Mutual Water Company	24,597	20,706	19,405	18,864	15,632	11,667	9,341	16,396	11,550	14,414									1,012	974	862	574					
City of Colton	2,814	3,606	3,305	3,743	3,267	4,405	3,044	3,842	3,695	2,943																	
City of Loma Linda						4,679	5,708	5,079	5,438	5,775						1,827	1,840	1,891	1,729	1,690	1,735						
City of Redlands	18,277	19,754	18,965	19,201	15,870	18,520	18,524	16,919	24,216	25,739						2,205	6,245	8,951	7,022	6,439	7,092	6,883	2,098				
City of Rialto	1,659	795	958	1,069	1,397	3,726	4,291	1,895	4,413	3,960	2,431	1,727	1,692	1,998	2,372	959	827	875	1,033	470	833						
City of San Bernardino	12,268	16,099	18,448	17,575	16,456	37,435	35,619	38,478	40,458	37,875	(869)	(216)	(139)	(644)	(727)	4,111	3,704	3,631	3,070	2,821	3,468						
East Valley Water District	5,545	6,891	7,632	7,927	7,427	13,500	12,791	15,211	14,540	12,716						7,003	7,044	6,519	6,352	6,621	7,562			4,114	4,114		
Fontana Union Water Company	3,841	19,949	13,295	14,674	13,286	3,791	2,850	4,122	3,247	6,945																	
Loma Linda University	1,011	1,116	1,202	1,186	961	1,164	1,010	990	986	961																	
Mountain View Power Co.	4,410	3,219	1,425	776	744	2,573	2,013	1,899	863	1,251																	
Muscov Mutual Water Company No. 1	1,941	1,870	2,028	1,863	1,884	1,591	1,314	1,692	1,449	1,571																	
San Bernardino County - Facility Management	636	815	809	964	386	547	438	841	366	770																	
San Bernardino Valley M.W.D.						6,874	5,643	4,921	6,421	6,321	(6,226)	(5,643)	(4,921)	(5,972)	(6,320)											25,506	25,506
Terrace Water Company	1,318	921	1,077	1,012	899	473	420	464	343	205																	
West Valley Water District	13,584	12,090	13,587	11,321	11,837	7,047	4,862	7,108	6,906	10,771	4,364	4,192	3,368	4,040	4,065												
Yucca Valley Water District						5	162	119	278	192																	
Other Inside SBVWCD	67,662	64,704	70,511	65,314	60,528	7,989	6,413	5,473	5,815	5,836						(19,509)	(17,287)	(22,440)	(19,856)	(17,735)	(19,164)						
Other Outside SBVWCD	11,218	8,562	8,989	10,240	8,563	1,025	1,820	1,323	955	922						(3,638)	(3,111)	(2,867)	(3,195)	(2,443)	(2,951)						
Santa Ana River Recharge Balance (see note 22)						3,499	3,405	17,472	3,422	492																	
San Bernardino Entities Total:	190,243	174,107	181,037	175,103	157,729	129,964	117,412	153,456	134,960	136,269														6,183	2,203	33,256	37,471

Agency	SWP Spreading Delivery					SWP Direct Delivery					TOTAL SWP Water				
	2015	2016	2017	2018	2019	2015	2016	2017	2018	2019	2015	2016	2017	2018	2019
Bear Valley Mutual Water Company						5,209	466	144	101		5,209	466	144	101	
City of Colton															
City of Loma Linda															
City of Redlands															
City of Rialto															
City of San Bernardino															
East Valley Water District															
Fontana Union Water Company															
Loma Linda University															
Mountain View Power Co.															
Muscov Mutual Water Company No. 1															
San Bernardino County - Facility Management															
San Bernardino Valley M.W.D.															
Terrace Water Company															
West Valley Water District															
Yucca Valley Water District															
Other Inside SBVWCD															
Other Outside SBVWCD															
San Bernardino Entities Total:	6,411	23,667	14,567	-	1,736	3,359	12,883	7,649	1,298	2,349	9,770	#####	#####	1,298	4,085

Agency	Lytle Creek					Mill Creek				
	1959	1960	1961	1962	1963	1959	1960	1961	1962	1963
Bear Valley Mutual Water Company										
City of Colton										
City of Loma Linda										
City of Redlands						7,047	6,913	3,615	8,973	4,451
City of Rialto										
City of San Bernardino										
East Valley Water District										
Fontana Union Water Company										
Loma Linda University										
Mountain View Power Co.										
Muscov Mutual Water Company No. 1										
San Bernardino County - Facility Management										
San Bernardino Valley M.W.D.										
Terrace Water Company										
West Valley Water District										
Yucca Valley Water District										
Other Inside SBVWCD										
Other Outside SBVWCD										
San Bernardino Entities Total:	14,436	10,219	8,693	14,509	12,230	7,047	6,913	3,615	8,973	4,451

Agency	Santa Ana River					Bear Valley Santa Ana River					Base Period Santa Ana River Diversion				
	1959	1960	1961	1962	1963	2015	2016	2017	2018	2019	2015	2016	2017	2018	2019
Bear Valley Mutual Water Company	12,090	9,573	6,781	8,354	3,722	3,885	8,912	10,240	10,181	6,559					
City of Colton															
City of Loma Linda															
City of Redlands	661	677	371	857	754										
City of Rialto															
City of San Bernardino															
East Valley Water District															
Fontana Union Water Company															
Loma Linda University															
Mountain View Power Co.															
Muscov Mutual Water Company No. 1															
San Bernardino County - Facility Management															
San Bernardino Valley M.W.D.															
Terrace Water Company															
West Valley Water District															
Yucca Valley Water District															
Other Inside SBVWCD															
Other Outside SBVWCD															
San Bernardino Entities Total:	20,432	16,696	11,913	14,192	11,523	7,565	22,281	21,547	22,216	16,664					

Bear Valley Santa Ana River					Base Period Santa Ana River Diversion					
Source: See surface water tab for individual sources					Source: Watermaster and BVMWC					
2015	2016	2017	2018	2019	1959	1960	1961	1962	1963	
Total Bear Valley Santa Ana River	3,885	8,912	10,240	10,181	6,559	7,081	6,446	4,761	6,361	5,047
Source: SBVMWD In-Line Calculation Table					117	78	70	103	173	
All In-Line Water					5,815	6,500	4,147	7,066	0	

Source: Watermaster Volume 1 Table 1				
344	16	12	39	15
Bear Valley Wells				

Source: EVWD Operations				
EVWD Surface Actual Deliveries				
3,664	4,372	3,439	4,149	4,035

Redlands Cooley Hat Data					
Source: Watermaster Volume 1 Table 1					
2015	2016	2017	2018	2019	
City of Redlands	4,192	3,116	9,557	5,826	12,500

North Fork Water					
Source: Watermaster and BVMWC					
2019	1959-63	2019	2019		
North Fork Water	7,081	6,446	4,761	6,361	5,047
City of Redlands	117	78	70	103	173
Bear Valley Mut.	12,424	9,403	6,585	6,774	5,615
Total SAR Diversion	19,622	15,927	11,416	13,258	10,836

Bear Valley Wells					
Source: Watermaster and BVMWC					
2019	1959-63	2019	2019		
Bear Valley Wells	266	1,701	1,961	1,861	1,061
Bear Valley Wells	4,700	4,609	7,711	5,156	4,600
Total	4,966	6,310	9,672	7,017	5,661

Redlands Tunnel				
544	599	301	754	581

SBB GC Water Charge FY2021-22		
GC Parties	FY21-22 Water Cost (\$)	FY21-22 Water Cost (AF)
Bear Valley Mutual Water Company	\$ -	0
City of Colton	\$ 71,295	602
City of Loma Linda	\$ 195,736	1653
City of Redlands	\$ (119,082)	-1006
City of Rialto	\$ 276,334	2334
City of San Bernardino	\$ 1,127,696	9524
East Valley Water District	\$ 3,087	26
Fontana Union Water Company	\$ 86,872	734
Loma Linda University	\$ 20,341	172
San Bernardino Valley M.W.D.	\$ 19	0
West Valley Water District	\$ 419,927	3547
Yucaipa Valley Water District	\$ 5,183	44
Total GC Parties:	\$2,087,409	17630

SBB GC O&M Charge FY2021-22	
GC Parties	FY21-22 O&M Cost (AF)
Bear Valley Mutual Water Company	\$ 112
City of Colton	\$ 21,944
City of Loma Linda	\$ 35,249
City of Redlands	\$ 152,415
City of Rialto	\$ 33,827
City of San Bernardino	\$ 277,153
East Valley Water District	\$ 91,554
Fontana Union Water Company	\$ 20,524
Loma Linda University	\$ 7,171
San Bernardino Valley M.W.D.	\$ 3
West Valley Water District	\$ 56,165
Yucaipa Valley Water District	\$ 685
Total GC Parties:	\$ 696,800